

# 600 Mary St, Monongahela, PA, US



## Total Area: 2194 sq. ft

1st Floor: 88 sq. ft, 2nd Floor: 1610 sq. ft, 3rd Floor: 496 sq. ft

Excluded: Storage 31 sq. ft, Garage 305 sq. ft, Basement 1176 sq. ft, Porch 96 sq. ft, Covered patio 146 sq. ft, Low ceiling 80 sq. ft, Walls: 250 sq. ft

## Property summary



Home data report

# 600 Mary St, Monongahela, PA, US

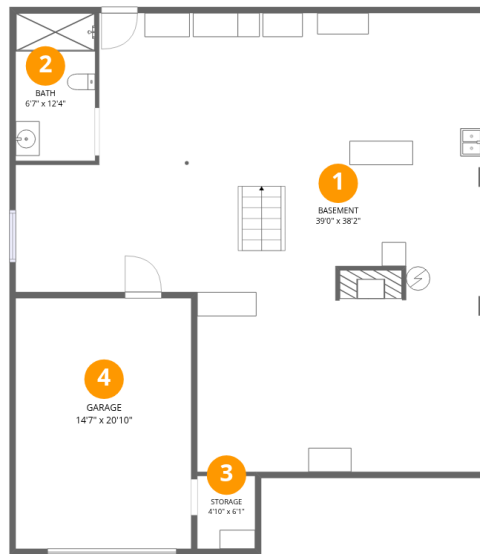


**1**  
Half baths



**1**  
Garages

# 600 Mary St, Monongahela, PA, US



## Room dimensions

Floor 1

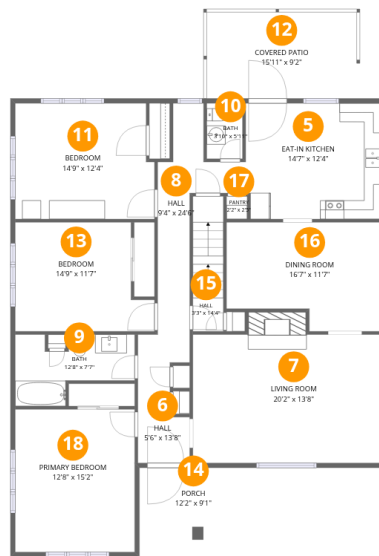
Total: 88sqft

Excluded: 1512sqft

#		Dimensions	sqft	Counted as living area
1	Basement	39'0" x 38'2"	1176 sq. ft	No
2	Bath	6'7" x 12'4"	81 sq. ft	Yes
3	Storage	4'10" x 6'1"	29 sq. ft	No
4	Garage	14'7" x 20'10"	305 sq. ft	No

# Home data report

## 600 Mary St, Monongahela, PA, US



### Room dimensions

Floor 2

Total: 1610 sqft

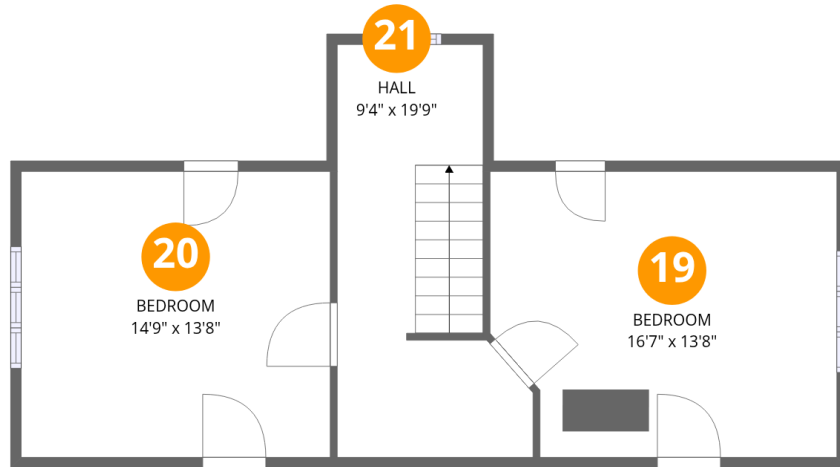
Excluded: 242 sqft

#		Dimensions	sqft	Counted as living area
5	Eat-in Kitchen	14'7" x 12'4"	178 sq. ft	Yes
6	Hall	5'6" x 13'8"	63 sq. ft	Yes
7	Living Room	20'2" x 13'8"	290 sq. ft	Yes
8	Hall	9'4" x 24'6"	102 sq. ft	Yes
9	Bath	12'8" x 7'7"	72 sq. ft	Yes
10	Bath	3'10" x 5'11"	22 sq. ft	Yes
11	Bedroom	14'9" x 12'4"	176 sq. ft	Yes
12	Covered Patio	15'11" x 9'2"	146 sq. ft	No
13	Bedroom	14'9" x 11'7"	151 sq. ft	Yes
14	Porch	12'2" x 9'1"	96 sq. ft	No
15	Hall	3'3" x 14'4"	46 sq. ft	Yes

Home data report

**600 Mary St, Monongahela, PA, US**

#		Dimensions	sqft	Counted as living area
16	Dining Room	16'7" x 11'7"	171 sq. ft	Yes
17	Pantry	2'2" x 2'5"	5 sq. ft	Yes
18	Primary Bedroom	12'8" x 15'2"	192 sq. ft	Yes



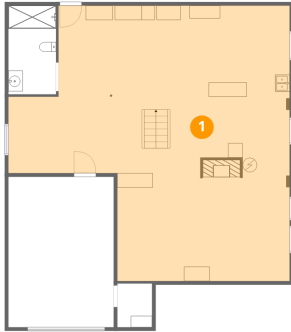
## Room dimensions

Floor 3

Total: 496 sqft Excluded: 80 sqft

#		Dimensions	sqft	Counted as living area
19	Bedroom	16'7" x 13'8"	191 sq. ft	Yes
20	Bedroom	14'9" x 13'8"	148 sq. ft	Yes
21	Hall	9'4" x 19'9"	147 sq. ft	Yes

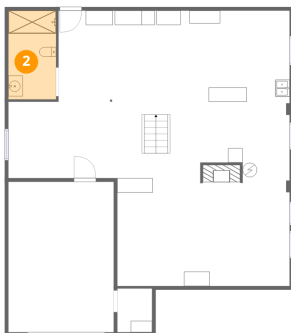
## 1 Floor 1 - Basement



Dimensions: 39'0" x 38'2"  
Area: 1176 sq. ft  
Counted as living area: No

Heated: Yes  
Finished: No  
Enclosed: Yes  
Contiguous: Yes  
Permitted: Yes  
Wet space: No  
Addition: No  
Conversion: No

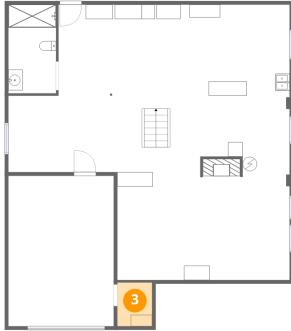
## 2 Floor 1 - Bath



Dimensions: 6'7" x 12'4"  
Area: 81 sq. ft  
Counted as living area: No

Heated: Yes  
Finished: Yes  
Enclosed: Yes  
Contiguous: No  
Permitted: Yes  
Wet space: Yes  
Addition: No  
Conversion: No

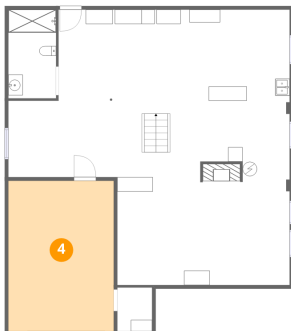
### 3 Floor 1 - Storage



Dimensions: 4'10" x 6'1"  
Area: 29 sq. ft  
Counted as living area: No

Heated: No  
Finished: No  
Enclosed: No  
Contiguous: Yes  
Permitted: Yes  
Wet space: No  
Addition: No  
Conversion: No

### 4 Floor 1 - Garage



Dimensions: 14'7" x 20'10"  
Area: 305 sq. ft  
Counted as living area: No

Heated: No  
Finished: No  
Enclosed: Yes  
Contiguous: Yes  
Permitted: Yes  
Wet space: No  
Addition: No  
Conversion: No

### 5 Floor 2 - Eat-in Kitchen



Dimensions: 14'7" x 12'4"  
Area: 178 sq. ft  
Counted as living area: Yes

Heated: Yes  
Finished: Yes  
Enclosed: Yes  
Contiguous: Yes  
Permitted: Yes  
Wet space: No  
Addition: No  
Conversion: No

### 6 Floor 2 - Hall



Dimensions: 5'6" x 13'8"  
Area: 63 sq. ft  
Counted as living area: Yes

Heated: Yes  
Finished: Yes  
Enclosed: Yes  
Contiguous: Yes  
Permitted: Yes  
Wet space: No  
Addition: No  
Conversion: No

### 7 Floor 2 - Living Room



Dimensions: 20'2" x 13'8"  
Area: 290 sq. ft  
Counted as living area: Yes

Heated: Yes  
Finished: Yes  
Enclosed: Yes  
Contiguous: Yes  
Permitted: Yes  
Wet space: No  
Addition: No  
Conversion: No

### 8 Floor 2 - Hall



Dimensions: 9'4" x 24'6"  
Area: 102 sq. ft  
Counted as living area: Yes

Heated: Yes  
Finished: Yes  
Enclosed: Yes  
Contiguous: Yes  
Permitted: Yes  
Wet space: No  
Addition: No  
Conversion: No

**9** Floor 2 - Bath



Dimensions: 12'8" x 7'7"  
Area: 72 sq. ft  
Counted as living area: Yes

Heated: Yes  
Finished: Yes  
Enclosed: Yes  
Contiguous: Yes  
Permitted: Yes  
Wet space: Yes  
Addition: No  
Conversion: No

**10** Floor 2 - Bath



Dimensions: 3'10" x 5'11"  
Area: 22 sq. ft  
Counted as living area: Yes

Heated: Yes  
Finished: Yes  
Enclosed: Yes  
Contiguous: Yes  
Permitted: Yes  
Wet space: Yes  
Addition: No  
Conversion: No

**11** Floor 2 - Bedroom



Dimensions: 14'9" x 12'4"  
Area: 176 sq. ft  
Counted as living area: Yes

Heated: Yes  
Finished: Yes  
Enclosed: Yes  
Contiguous: Yes  
Permitted: Yes  
Wet space: No  
Addition: No  
Conversion: No

## 12 Floor 2 - Covered Patio



Dimensions: 15'11" x 9'2"  
Area: 146 sq. ft  
Counted as living area: No

Heated: No  
Finished: No  
Enclosed: No  
Contiguous: Yes  
Permitted: Yes  
Wet space: No  
Addition: No  
Conversion: No

## 13 Floor 2 - Bedroom



Dimensions: 14'9" x 11'7"  
Area: 151 sq. ft  
Counted as living area: Yes

Heated: Yes  
Finished: Yes  
Enclosed: Yes  
Contiguous: Yes  
Permitted: Yes  
Wet space: No  
Addition: No  
Conversion: No

## 14 Floor 2 - Porch



Dimensions: 12'2" x 9'1"  
Area: 96 sq. ft  
Counted as living area: No

Heated: No  
Finished: No  
Enclosed: No  
Contiguous: Yes  
Permitted: Yes  
Wet space: No  
Addition: No  
Conversion: No

**15** Floor 2 - Hall



Dimensions: 3'3" x 14'4"  
Area: 46 sq. ft  
Counted as living area: Yes

Heated: Yes  
Finished: Yes  
Enclosed: Yes  
Contiguous: Yes  
Permitted: Yes  
Wet space: No  
Addition: No  
Conversion: No

**16** Floor 2 - Dining Room



Dimensions: 16'7" x 11'7"  
Area: 171 sq. ft  
Counted as living area: Yes

Heated: Yes  
Finished: Yes  
Enclosed: Yes  
Contiguous: Yes  
Permitted: Yes  
Wet space: No  
Addition: No  
Conversion: No

**17** Floor 2 - Pantry



Dimensions: 2'2" x 2'5"  
Area: 5 sq. ft  
Counted as living area: Yes

Heated: Yes  
Finished: Yes  
Enclosed: Yes  
Contiguous: Yes  
Permitted: Yes  
Wet space: No  
Addition: No  
Conversion: No

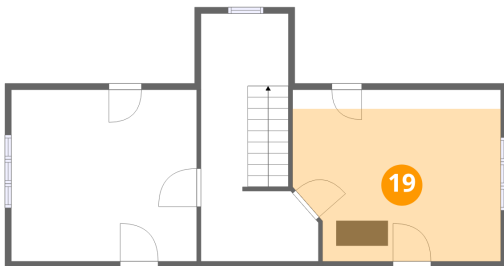
### 18 Floor 2 - Primary Bedroom



Dimensions: 12'8" x 15'2"  
Area: 192 sq. ft  
Counted as living area: Yes

Heated: Yes  
Finished: Yes  
Enclosed: Yes  
Contiguous: Yes  
Permitted: Yes  
Wet space: No  
Addition: No  
Conversion: No

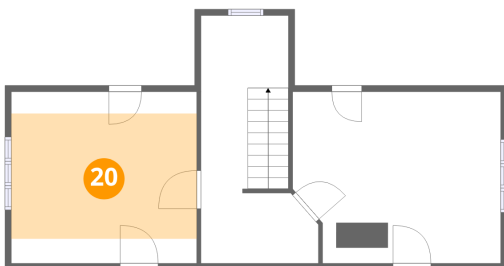
### 19 Floor 3 - Bedroom



Dimensions: 16'7" x 13'8"  
Area: 191 sq. ft  
Counted as living area: Yes

Heated: Yes  
Finished: Yes  
Enclosed: Yes  
Contiguous: Yes  
Permitted: Yes  
Wet space: No  
Addition: No  
Conversion: No

### 20 Floor 3 - Bedroom

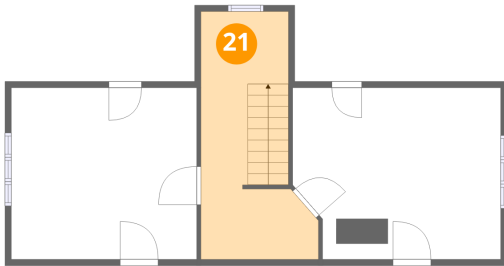


Dimensions: 14'9" x 13'8"  
Area: 148 sq. ft  
Counted as living area: Yes

Heated: Yes  
Finished: Yes  
Enclosed: Yes  
Contiguous: Yes  
Permitted: Yes  
Wet space: No  
Addition: No  
Conversion: No

**21** Floor 3 - Hall

---



Dimensions: 9'4" x 19'9"  
Area: 147 sq. ft  
Counted as living area: Yes

Heated: Yes  
Finished: Yes  
Enclosed: Yes  
Contiguous: Yes  
Permitted: Yes  
Wet space: No  
Addition: No  
Conversion: No