

Home data report

5445 Shady Oaks Dr, Windsor, CO, US



Total Area: 1330 sq. ft

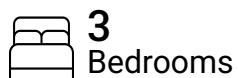
1st Floor: 1330 sq. ft

Excluded: Garage 648 sq. ft, Walls: 125 sq. ft

Property summary



1 Floors



3 Bedrooms



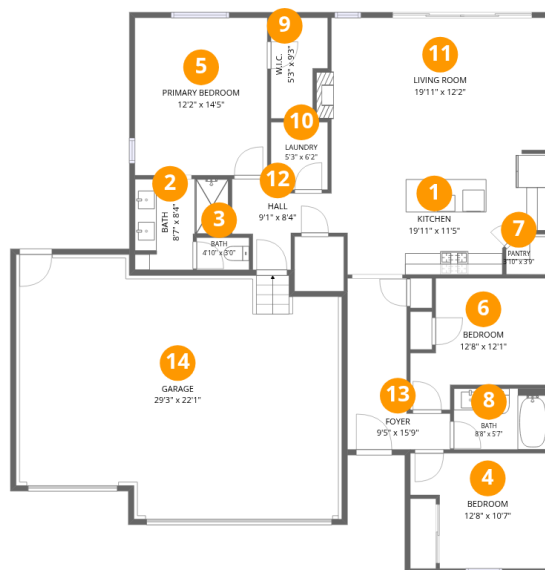
2 Bathrooms



1 Garages

Home data report

5445 Shady Oaks Dr,Windsor,CO,US



Room dimensions

Floor 1

Total:1330sqft Excluded: 648sqft

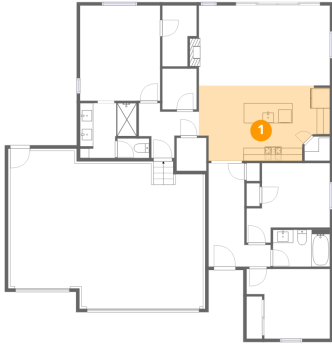
#		Dimensions	sqft	Counted as living area
1	Kitchen	19'11" x 11'5"	205 sq. ft	Yes
2	Bath	8'7" x 8'4"	60 sq. ft	Yes
3	Bath	4'10" x 3'0"	14 sq. ft	Yes
4	Bedroom	12'8" x 10'7"	116 sq. ft	Yes
5	Primary Bedroom	12'2" x 14'5"	176 sq. ft	Yes
6	Bedroom	12'8" x 12'1"	116 sq. ft	Yes
7	Pantry	3'10" x 3'9"	13 sq. ft	Yes
8	Bath	8'8" x 5'7"	48 sq. ft	Yes
9	W.I.C.	5'3" x 9'3"	42 sq. ft	Yes
10	Laundry	5'3" x 6'2"	32 sq. ft	Yes
11	Living Room	19'11" x 12'2"	248 sq. ft	Yes

Home data report

5445 Shady Oaks Dr,Windsor,CO,US

#		Dimensions	sqft	Counted as living area
12	Hall	9'1" x 8'4"	49 sq. ft	Yes
13	Foyer	9'5" x 15'9"	99 sq. ft	Yes
14	Garage	29'3" x 22'1"	648 sq. ft	No

1 Floor 1 - Kitchen



Dimensions: 19'11" x 11'5"
Area: 205 sq. ft
Counted as living area: Yes

Heated: Yes
Finished: Yes
Enclosed: Yes
Contiguous: Yes
Permitted: Yes
Wet space: No
Addition: No
Conversion: No

2 Floor 1 - Bath



Dimensions: 8'7" x 8'4"
Area: 60 sq. ft
Counted as living area: Yes

Heated: Yes
Finished: Yes
Enclosed: Yes
Contiguous: Yes
Permitted: Yes
Wet space: Yes
Addition: No
Conversion: No

3 Floor 1 - Bath



Dimensions: 4'10" x 3'0"
Area: 14 sq. ft
Counted as living area: Yes

Heated: Yes
Finished: Yes
Enclosed: Yes
Contiguous: Yes
Permitted: Yes
Wet space: Yes
Addition: No
Conversion: No

4 Floor 1 - Bedroom



Dimensions: 12'8" x 10'7"
Area: 116 sq. ft
Counted as living area: Yes

Heated: Yes
Finished: Yes
Enclosed: Yes
Contiguous: Yes
Permitted: Yes
Wet space: No
Addition: No
Conversion: No

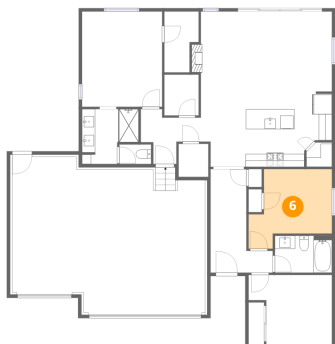
5 Floor 1 - Primary Bedroom



Dimensions: 12'2" x 14'5"
Area: 176 sq. ft
Counted as living area: Yes

Heated: Yes
Finished: Yes
Enclosed: Yes
Contiguous: Yes
Permitted: Yes
Wet space: No
Addition: No
Conversion: No

6 Floor 1 - Bedroom



Dimensions: 12'8" x 12'1"
Area: 116 sq. ft
Counted as living area: Yes

Heated: Yes
Finished: Yes
Enclosed: Yes
Contiguous: Yes
Permitted: Yes
Wet space: No
Addition: No
Conversion: No

7 Floor 1 - Pantry



Dimensions: 3'10" x 3'9"
Area: 13 sq. ft
Counted as living area: Yes

Heated: Yes
Finished: Yes
Enclosed: Yes
Contiguous: Yes
Permitted: Yes
Wet space: No
Addition: No
Conversion: No

8 Floor 1 - Bath



Dimensions: 8'8" x 5'7"
Area: 48 sq. ft
Counted as living area: Yes

Heated: Yes
Finished: Yes
Enclosed: Yes
Contiguous: Yes
Permitted: Yes
Wet space: Yes
Addition: No
Conversion: No

9 Floor 1 - W.I.C.



Dimensions: 5'3" x 9'3"
Area: 42 sq. ft
Counted as living area: Yes

Heated: Yes
Finished: Yes
Enclosed: Yes
Contiguous: Yes
Permitted: Yes
Wet space: No
Addition: No
Conversion: No

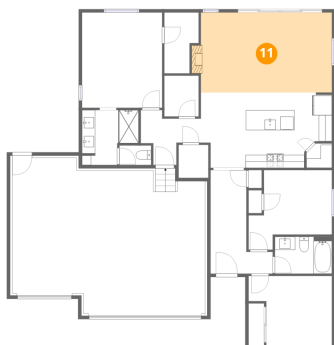
10 Floor 1 - Laundry



Dimensions: 5'3" x 6'2"
Area: 32 sq. ft
Counted as living area: Yes

Heated: Yes
Finished: Yes
Enclosed: Yes
Contiguous: Yes
Permitted: Yes
Wet space: No
Addition: No
Conversion: No

11 Floor 1 - Living Room



Dimensions: 19'11" x 12'2"
Area: 248 sq. ft
Counted as living area: Yes

Heated: Yes
Finished: Yes
Enclosed: Yes
Contiguous: Yes
Permitted: Yes
Wet space: No
Addition: No
Conversion: No

12 Floor 1 - Hall



Dimensions: 9'1" x 8'4"
Area: 49 sq. ft
Counted as living area: Yes

Heated: Yes
Finished: Yes
Enclosed: Yes
Contiguous: Yes
Permitted: Yes
Wet space: No
Addition: No
Conversion: No

13 Floor 1 - Foyer



Dimensions: 9'5" x 15'9"
Area: 99 sq. ft
Counted as living area: Yes

Heated: Yes
Finished: Yes
Enclosed: Yes
Contiguous: Yes
Permitted: Yes
Wet space: No
Addition: No
Conversion: No

14 Floor 1 - Garage



Dimensions: 29'3" x 22'1"
Area: 648 sq. ft
Counted as living area: No

Heated: No
Finished: No
Enclosed: Yes
Contiguous: Yes
Permitted: Yes
Wet space: No
Addition: No
Conversion: No