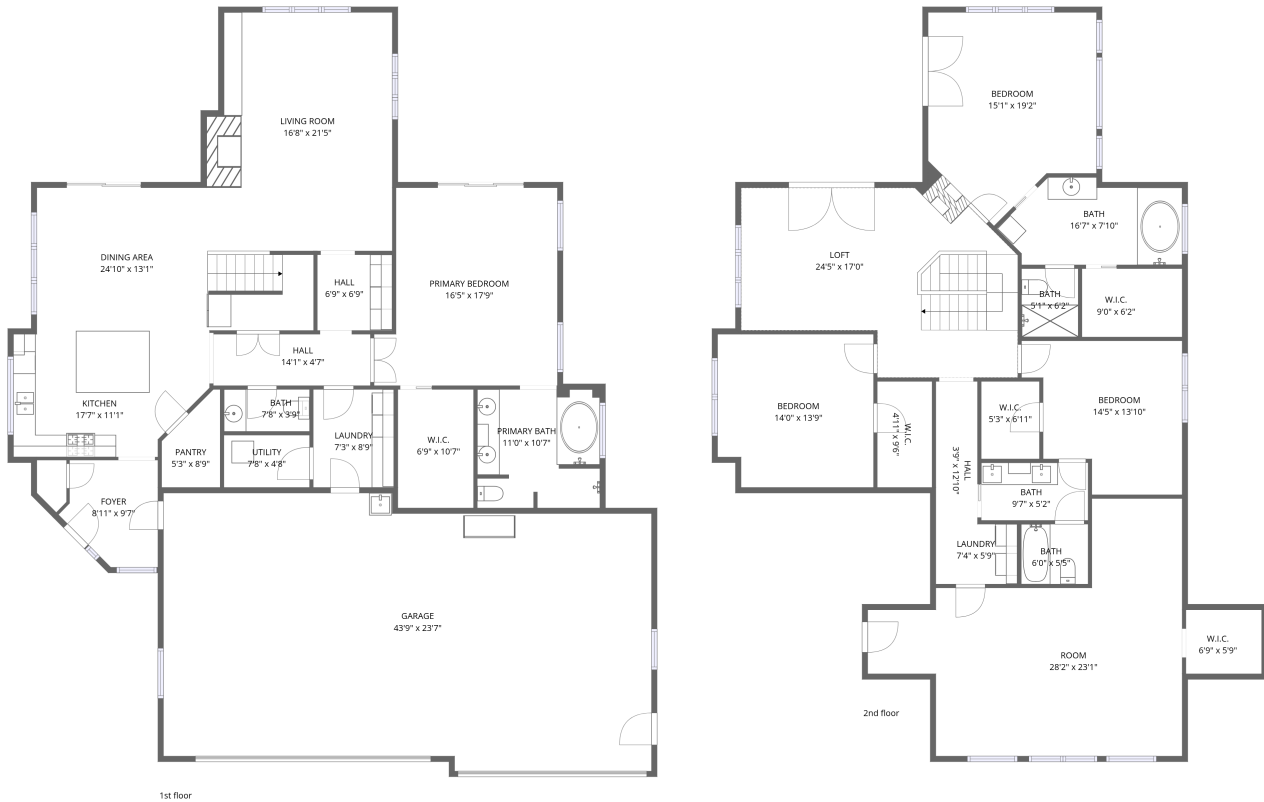


Home data report

2424 Canyon St, Spearfish, SD, US



Total Area: 3574 sq. ft

1st Floor: 1645 sq. ft, 2nd Floor: 1929 sq. ft

Excluded: Garage 1013 sq. ft, Walls: 270 sq. ft

Property summary

 **2** Floors

 **4** Bedrooms

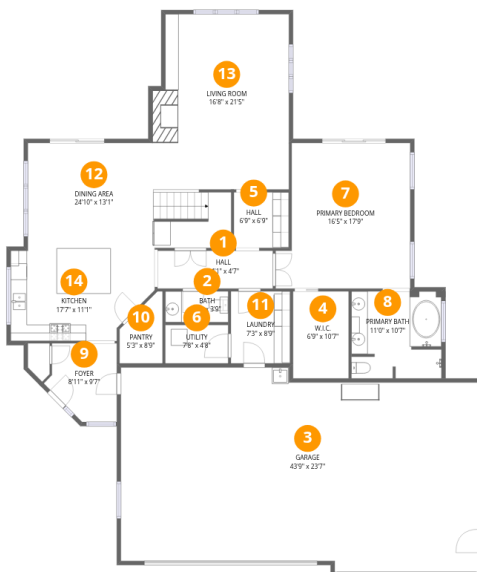
 **3** Bathrooms

Home data report

2424 Canyon St, Spearfish, SD, US

 **1**
Half baths

 **1**
Garages



Room dimensions

Floor 1

Total: 1645sqft

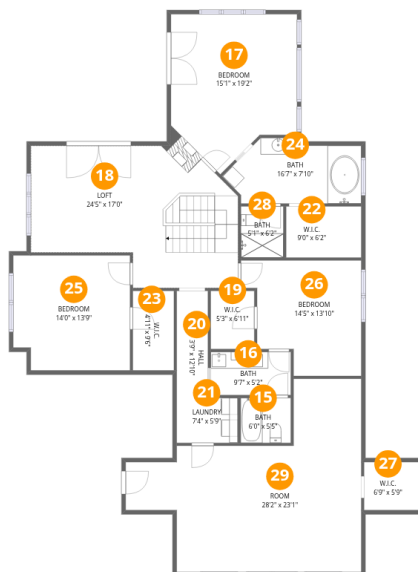
Excluded: 1013sqft

#		Dimensions	sqft	Counted as living area
1	Hall	14'1" x 4'7"	65 sq. ft	Yes
2	Bath	7'8" x 3'9"	29 sq. ft	Yes
3	Garage	43'9" x 23'7"	1031 sq. ft	No
4	W.I.C.	6'9" x 10'7"	72 sq. ft	Yes
5	Hall	6'9" x 6'9"	46 sq. ft	Yes
6	Utility	7'8" x 4'8"	36 sq. ft	Yes
7	Primary Bedroom	16'5" x 17'9"	291 sq. ft	Yes
8	Primary Bath	11'0" x 10'7"	117 sq. ft	Yes
9	Foyer	8'11" x 9'7"	85 sq. ft	Yes
10	Pantry	5'3" x 8'9"	46 sq. ft	Yes
11	Laundry	7'3" x 8'9"	64 sq. ft	Yes

Home data report

2424 Canyon St,Spearfish,SD,US

#		Dimensions	sqft	Counted as living area
12	Dining Area	24'10" x 13'1"	325 sq. ft	Yes
13	Living Room	16'8" x 21'5"	356 sq. ft	Yes
14	Kitchen	17'7" x 11'1"	195 sq. ft	Yes



Room dimensions

Floor 2

Total: 1929 sqft Excluded: 0 sqft

#		Dimensions	sqft	Counted as living area
15	Bath	6'0" x 5'5"	32 sq. ft	Yes
16	Bath	9'7" x 5'2"	50 sq. ft	Yes
17	Bedroom	15'1" x 19'2"	288 sq. ft	Yes
18	Loft	24'5" x 17'0"	415 sq. ft	Yes
19	W.I.C.	5'3" x 6'11"	36 sq. ft	Yes
20	Hall	3'9" x 12'10"	48 sq. ft	Yes
21	Laundry	7'4" x 5'9"	42 sq. ft	Yes
22	W.I.C.	9'0" x 6'2"	55 sq. ft	Yes
23	W.I.C.	4'11" x 9'6"	47 sq. ft	Yes
24	Bath	16'7" x 7'10"	131 sq. ft	Yes
25	Bedroom	14'0" x 13'9"	192 sq. ft	Yes

Home data report

2424 Canyon St,Spearfish,SD,US

#		Dimensions	sqft	Counted as living area
26	Bedroom	14'5" x 13'10"	199 sq. ft	Yes
27	W.I.C.	6'9" x 5'9"	39 sq. ft	Yes
28	Bath	5'1" x 6'2"	31 sq. ft	Yes
29	Room	28'2" x 23'1"	650 sq. ft	Yes

1 Floor 1 - Hall



Dimensions: 14'1" x 4'7"
Area: 65 sq. ft
Counted as living area: Yes

Heated: Yes
Finished: Yes
Enclosed: Yes
Contiguous: Yes
Permitted: Yes
Wet space: No
Addition: No
Conversion: No

2 Floor 1 - Bath



Dimensions: 7'8" x 3'9"
Area: 29 sq. ft
Counted as living area: Yes

Heated: Yes
Finished: Yes
Enclosed: Yes
Contiguous: Yes
Permitted: Yes
Wet space: Yes
Addition: No
Conversion: No

3 Floor 1 - Garage



Dimensions: 43'9" x 23'7"
Area: 1031 sq. ft
Counted as living area: No

Heated: No
Finished: No
Enclosed: Yes
Contiguous: Yes
Permitted: Yes
Wet space: No
Addition: No
Conversion: No

4 Floor 1 - W.I.C.



Dimensions: 6'9" x 10'7"
Area: 72 sq. ft
Counted as living area: Yes

Heated: Yes
Finished: Yes
Enclosed: Yes
Contiguous: Yes
Permitted: Yes
Wet space: No
Addition: No
Conversion: No

5 Floor 1 - Hall



Dimensions: 6'9" x 6'9"
Area: 46 sq. ft
Counted as living area: Yes

Heated: Yes
Finished: Yes
Enclosed: Yes
Contiguous: Yes
Permitted: Yes
Wet space: No
Addition: No
Conversion: No

6 Floor 1 - Utility



Dimensions: 7'8" x 4'8"
Area: 36 sq. ft
Counted as living area: Yes

Heated: Yes
Finished: Yes
Enclosed: Yes
Contiguous: Yes
Permitted: Yes
Wet space: No
Addition: No
Conversion: No

7 Floor 1 - Primary Bedroom



Dimensions: 16'5" x 17'9"
Area: 291 sq. ft
Counted as living area: Yes

Heated: Yes
Finished: Yes
Enclosed: Yes
Contiguous: Yes
Permitted: Yes
Wet space: No
Addition: No
Conversion: No

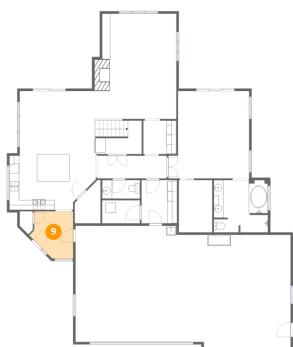
8 Floor 1 - Primary Bath



Dimensions: 11'0" x 10'7"
Area: 117 sq. ft
Counted as living area: Yes

Heated: Yes
Finished: Yes
Enclosed: Yes
Contiguous: Yes
Permitted: Yes
Wet space: Yes
Addition: No
Conversion: No

9 Floor 1 - Foyer



Dimensions: 8'11" x 9'7"
Area: 85 sq. ft
Counted as living area: Yes

Heated: Yes
Finished: Yes
Enclosed: Yes
Contiguous: Yes
Permitted: Yes
Wet space: No
Addition: No
Conversion: No

10 Floor 1 - Pantry



Dimensions: 5'3" x 8'9"
Area: 46 sq. ft
Counted as living area: Yes

Heated: Yes
Finished: Yes
Enclosed: Yes
Contiguous: Yes
Permitted: Yes
Wet space: No
Addition: No
Conversion: No

11 Floor 1 - Laundry



Dimensions: 7'3" x 8'9"
Area: 64 sq. ft
Counted as living area: Yes

Heated: Yes
Finished: Yes
Enclosed: Yes
Contiguous: Yes
Permitted: Yes
Wet space: No
Addition: No
Conversion: No

12 Floor 1 - Dining Area



Dimensions: 24'10" x 13'1"
Area: 325 sq. ft
Counted as living area: Yes

Heated: Yes
Finished: Yes
Enclosed: Yes
Contiguous: Yes
Permitted: Yes
Wet space: No
Addition: No
Conversion: No

13 Floor 1 - Living Room



Dimensions: 16'8" x 21'5"
Area: 356 sq. ft
Counted as living area: Yes

Heated: Yes
Finished: Yes
Enclosed: Yes
Contiguous: Yes
Permitted: Yes
Wet space: No
Addition: No
Conversion: No

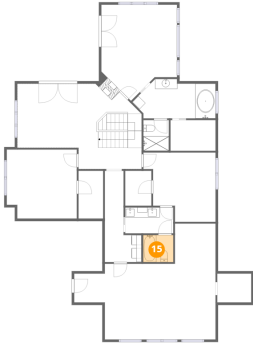
14 Floor 1 - Kitchen



Dimensions: 17'7" x 11'1"
Area: 195 sq. ft
Counted as living area: Yes

Heated: Yes
Finished: Yes
Enclosed: Yes
Contiguous: Yes
Permitted: Yes
Wet space: No
Addition: No
Conversion: No

15 Floor 2 - Bath



Dimensions: 6'0" x 5'5"
Area: 32 sq. ft
Counted as living area: Yes

Heated: Yes
Finished: Yes
Enclosed: Yes
Contiguous: Yes
Permitted: Yes
Wet space: Yes
Addition: No
Conversion: No

16 Floor 2 - Bath



Dimensions: 9'7" x 5'2"
Area: 50 sq. ft
Counted as living area: Yes

Heated: Yes
Finished: Yes
Enclosed: Yes
Contiguous: Yes
Permitted: Yes
Wet space: Yes
Addition: No
Conversion: No

17 Floor 2 - Bedroom



Dimensions: 15'1" x 19'2"
Area: 288 sq. ft
Counted as living area: Yes

Heated: Yes
Finished: Yes
Enclosed: Yes
Contiguous: Yes
Permitted: Yes
Wet space: No
Addition: No
Conversion: No

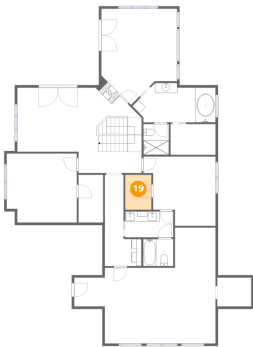
18 Floor 2 - Loft



Dimensions: 24'5" x 17'0"
Area: 415 sq. ft
Counted as living area: Yes

Heated: Yes
Finished: Yes
Enclosed: Yes
Contiguous: Yes
Permitted: Yes
Wet space: No
Addition: No
Conversion: No

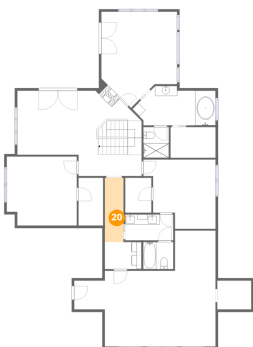
19 Floor 2 - W.I.C.



Dimensions: 5'3" x 6'11"
Area: 36 sq. ft
Counted as living area: Yes

Heated: Yes
Finished: Yes
Enclosed: Yes
Contiguous: Yes
Permitted: Yes
Wet space: No
Addition: No
Conversion: No

20 Floor 2 - Hall



Dimensions: 3'9" x 12'10"
Area: 48 sq. ft
Counted as living area: Yes

Heated: Yes
Finished: Yes
Enclosed: Yes
Contiguous: Yes
Permitted: Yes
Wet space: No
Addition: No
Conversion: No

21 Floor 2 - Laundry



Dimensions: 7'4" x 5'9"
Area: 42 sq. ft
Counted as living area: Yes

Heated: Yes
Finished: Yes
Enclosed: Yes
Contiguous: Yes
Permitted: Yes
Wet space: No
Addition: No
Conversion: No

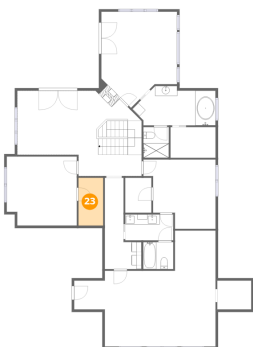
22 Floor 2 - W.I.C.



Dimensions: 9'0" x 6'2"
Area: 55 sq. ft
Counted as living area: Yes

Heated: Yes
Finished: Yes
Enclosed: Yes
Contiguous: Yes
Permitted: Yes
Wet space: No
Addition: No
Conversion: No

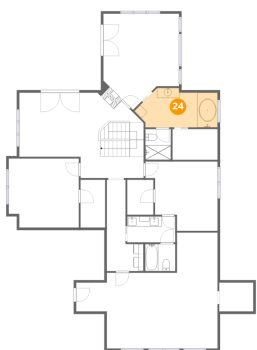
23 Floor 2 - W.I.C.



Dimensions: 4'11" x 9'6"
Area: 47 sq. ft
Counted as living area: Yes

Heated: Yes
Finished: Yes
Enclosed: Yes
Contiguous: Yes
Permitted: Yes
Wet space: No
Addition: No
Conversion: No

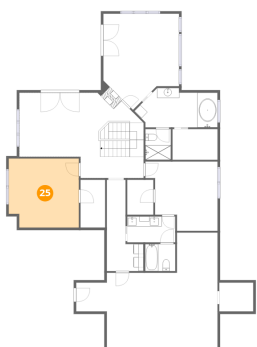
24 Floor 2 - Bath



Dimensions: 16'7" x 7'10"
Area: 131 sq. ft
Counted as living area: Yes

Heated: Yes
Finished: Yes
Enclosed: Yes
Contiguous: Yes
Permitted: Yes
Wet space: Yes
Addition: No
Conversion: No

25 Floor 2 - Bedroom



Dimensions: 14'0" x 13'9"
Area: 192 sq. ft
Counted as living area: Yes

Heated: Yes
Finished: Yes
Enclosed: Yes
Contiguous: Yes
Permitted: Yes
Wet space: No
Addition: No
Conversion: No

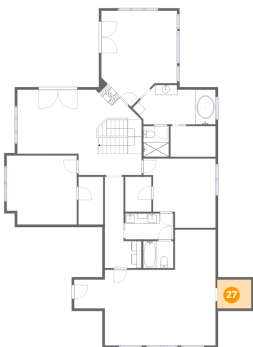
26 Floor 2 - Bedroom



Dimensions: 14'5" x 13'10"
Area: 199 sq. ft
Counted as living area: Yes

Heated: Yes
Finished: Yes
Enclosed: Yes
Contiguous: Yes
Permitted: Yes
Wet space: No
Addition: No
Conversion: No

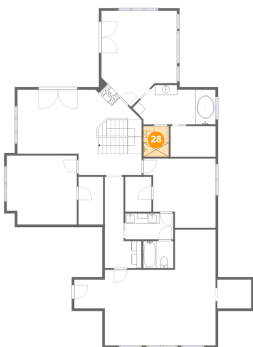
27 Floor 2 - W.I.C.



Dimensions: 6'9" x 5'9"
Area: 39 sq. ft
Counted as living area: Yes

Heated: Yes
Finished: Yes
Enclosed: Yes
Contiguous: Yes
Permitted: Yes
Wet space: No
Addition: No
Conversion: No

28 Floor 2 - Bath



Dimensions: 5'1" x 6'2"
Area: 31 sq. ft
Counted as living area: Yes

Heated: Yes
Finished: Yes
Enclosed: Yes
Contiguous: Yes
Permitted: Yes
Wet space: Yes
Addition: No
Conversion: No

29 Floor 2 - Room



Dimensions: 28'2" x 23'1"
Area: 650 sq. ft
Counted as living area: Yes

Heated: Yes
Finished: Yes
Enclosed: Yes
Contiguous: Yes
Permitted: Yes
Wet space: No
Addition: No
Conversion: No