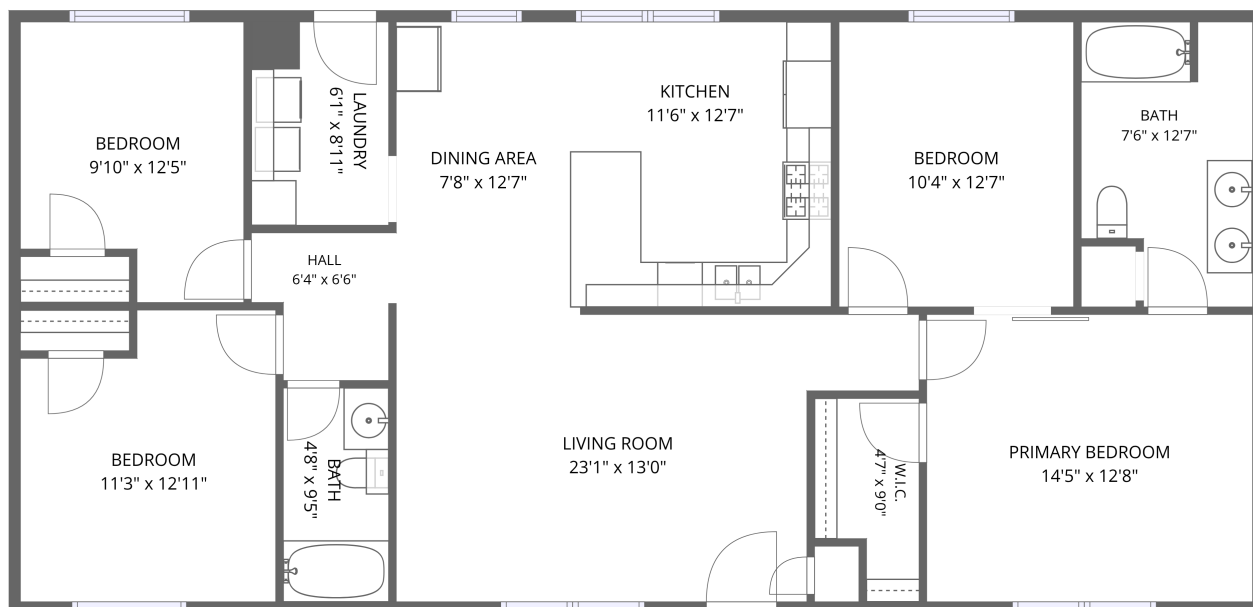


Home data report

1148 East St,Upton,WY,US



1st floor

Total Area: 1394 sq. ft

1st Floor: 1394 sq. ft

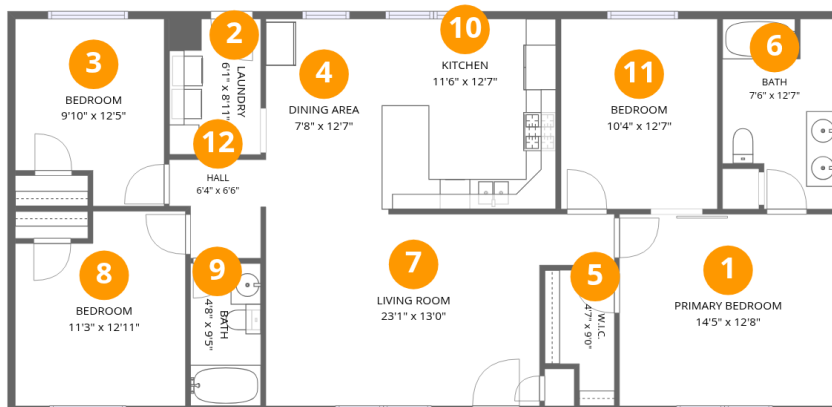
Excluded: Walls: 81 sq. ft

Property summary

 **1** Floors

 **4** Bedrooms

 **2** Bathrooms



Room dimensions

Floor 1

Total:1394sqft Excluded: 0sqft

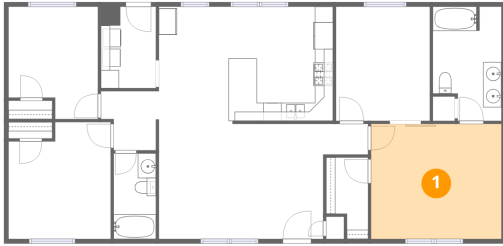
#		Dimensions	sqft	Counted as living area
1	Primary Bedroom	14'5" x 12'8"	183 sq. ft	Yes
2	Laundry	6'1" x 8'11"	54 sq. ft	Yes
3	Bedroom	9'10" x 12'5"	110 sq. ft	Yes
4	Dining Area	7'8" x 12'7"	97 sq. ft	Yes
5	W.I.C.	4'7" x 9'0"	35 sq. ft	Yes
6	Bath	7'6" x 12'7"	86 sq. ft	Yes
7	Living Room	23'1" x 13'0"	250 sq. ft	Yes
8	Bedroom	11'3" x 12'11"	134 sq. ft	Yes
9	Bath	4'8" x 9'5"	44 sq. ft	Yes
10	Kitchen	11'6" x 12'7"	145 sq. ft	Yes
11	Bedroom	10'4" x 12'7"	130 sq. ft	Yes

Home data report

1148 East St,Upton,WY,US

#		Dimensions	sqft	Counted as living area
12	Hall	6'4" x 6'6"	36 sq. ft	Yes

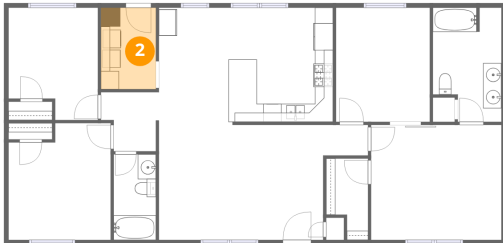
1 Floor 1 - Primary Bedroom



Dimensions: 14'5" x 12'8"
Area: 183 sq. ft
Counted as living area: Yes

Heated: Yes
Finished: Yes
Enclosed: Yes
Contiguous: Yes
Permitted: Yes
Wet space: No
Addition: No
Conversion: No

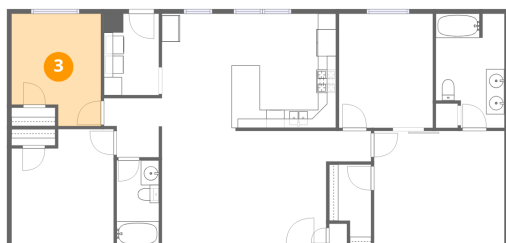
2 Floor 1 - Laundry



Dimensions: 6'1" x 8'11"
Area: 54 sq. ft
Counted as living area: Yes

Heated: Yes
Finished: Yes
Enclosed: Yes
Contiguous: Yes
Permitted: Yes
Wet space: No
Addition: No
Conversion: No

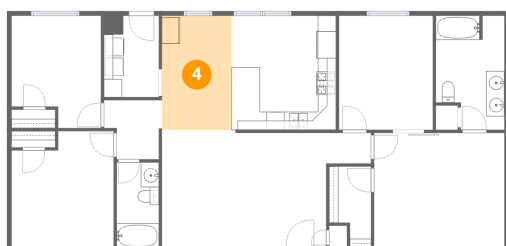
3 Floor 1 - Bedroom



Dimensions: 9'10" x 12'5"
Area: 110 sq. ft
Counted as living area: Yes

Heated: Yes
Finished: Yes
Enclosed: Yes
Contiguous: Yes
Permitted: Yes
Wet space: No
Addition: No
Conversion: No

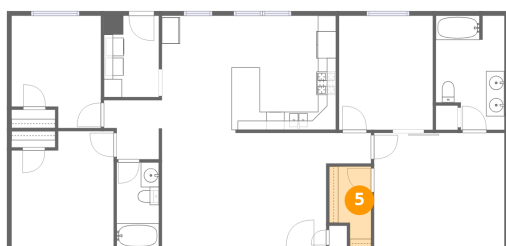
4 Floor 1 - Dining Area



Dimensions: 7'8" x 12'7"
Area: 97 sq. ft
Counted as living area: Yes

Heated: Yes
Finished: Yes
Enclosed: Yes
Contiguous: Yes
Permitted: Yes
Wet space: No
Addition: No
Conversion: No

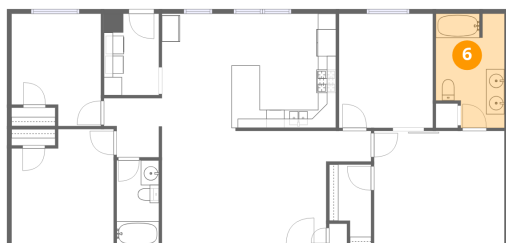
5 Floor 1 - W.I.C.



Dimensions: 4'7" x 9'0"
Area: 35 sq. ft
Counted as living area: Yes

Heated: Yes
Finished: Yes
Enclosed: Yes
Contiguous: Yes
Permitted: Yes
Wet space: No
Addition: No
Conversion: No

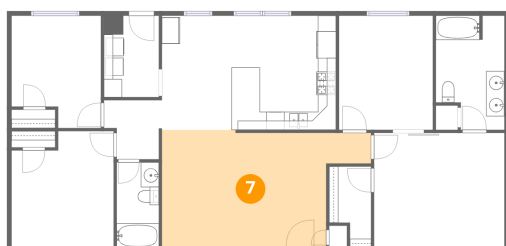
6 Floor 1 - Bath



Dimensions: 7'6" x 12'7"
Area: 86 sq. ft
Counted as living area: Yes

Heated: Yes
Finished: Yes
Enclosed: Yes
Contiguous: Yes
Permitted: Yes
Wet space: Yes
Addition: No
Conversion: No

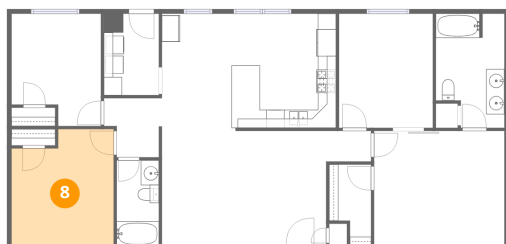
7 Floor 1 - Living Room



Dimensions: 23'1" x 13'0"
Area: 250 sq. ft
Counted as living area: Yes

Heated: Yes
Finished: Yes
Enclosed: Yes
Contiguous: Yes
Permitted: Yes
Wet space: No
Addition: No
Conversion: No

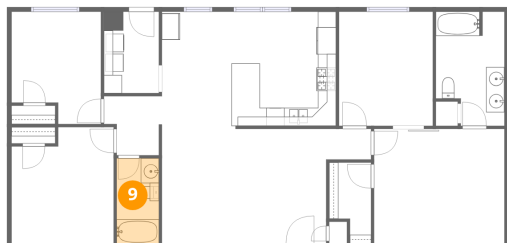
8 Floor 1 - Bedroom



Dimensions: 11'3" x 12'11"
Area: 134 sq. ft
Counted as living area: Yes

Heated: Yes
Finished: Yes
Enclosed: Yes
Contiguous: Yes
Permitted: Yes
Wet space: No
Addition: No
Conversion: No

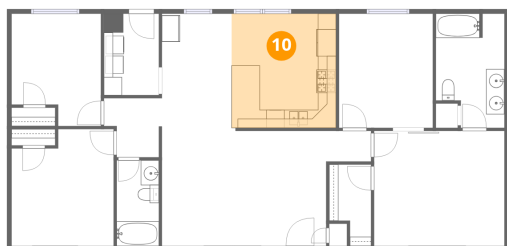
9 Floor 1 - Bath



Dimensions: 4'8" x 9'5"
Area: 44 sq. ft
Counted as living area: Yes

Heated: Yes
Finished: Yes
Enclosed: Yes
Contiguous: Yes
Permitted: Yes
Wet space: Yes
Addition: No
Conversion: No

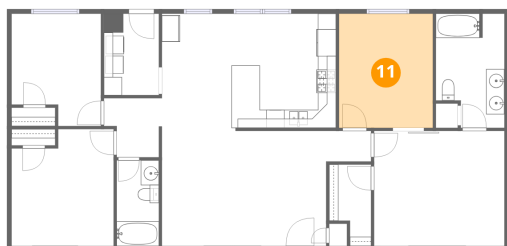
10 Floor 1 - Kitchen



Dimensions: 11'6" x 12'7"
Area: 145 sq. ft
Counted as living area: Yes

Heated: Yes
Finished: Yes
Enclosed: Yes
Contiguous: Yes
Permitted: Yes
Wet space: No
Addition: No
Conversion: No

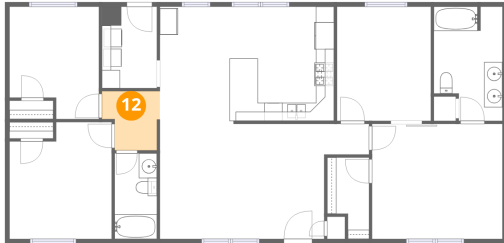
11 Floor 1 - Bedroom



Dimensions: 10'4" x 12'7"
Area: 130 sq. ft
Counted as living area: Yes

Heated: Yes
Finished: Yes
Enclosed: Yes
Contiguous: Yes
Permitted: Yes
Wet space: No
Addition: No
Conversion: No

12 Floor 1 - Hall



Dimensions: 6'4" x 6'6"
Area: 36 sq. ft
Counted as living area: Yes

Heated: Yes
Finished: Yes
Enclosed: Yes
Contiguous: Yes
Permitted: Yes
Wet space: No
Addition: No
Conversion: No