

## Home data report

102 Willett Avenue, Riverside, Providence County, Rhode Island, United States, 02915



**Total Area: 1430 sq. ft**

Basement: 0 sq. ft, 1st Floor: 771 sq. ft, 2nd Floor: 659 sq. ft

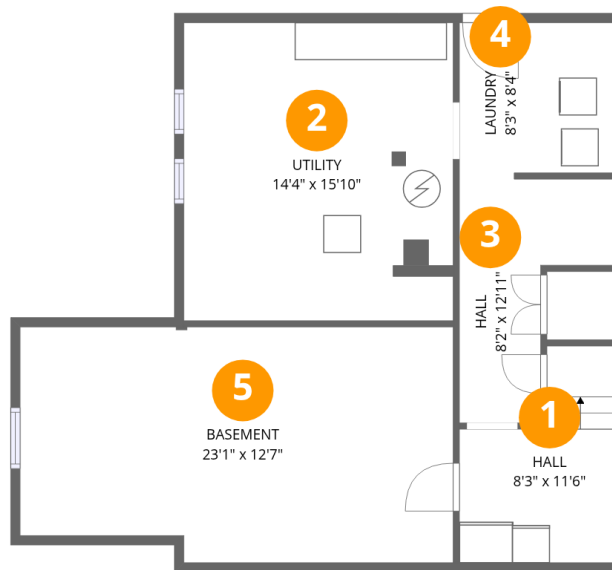
Excluded: Hall 164 sq. ft, Basement 282 sq. ft, Undefined 13 sq. ft, Utility 231 sq. ft, Laundry 67 sq. ft, Walls: 176 sq. ft

## Property summary



## Home data report

102 Willett Avenue, Riverside, Providence County, Rhode Island, United States, 02915



## Room dimensions

Floor 1 Below grade

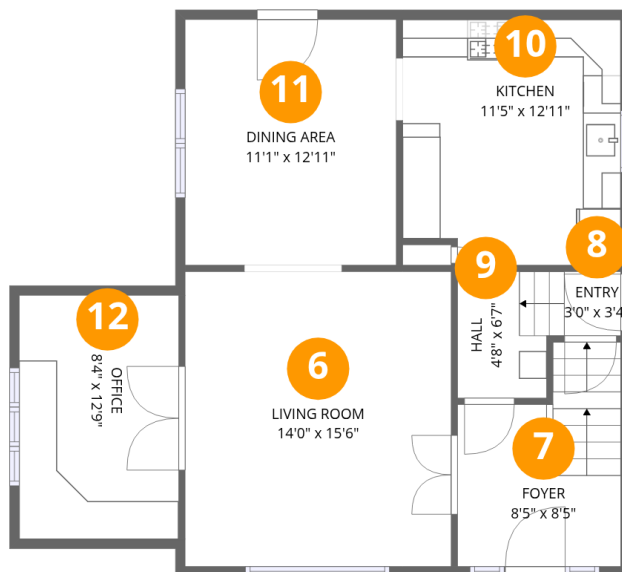
Total:0sqft

Excluded: 757sqft

#		Dimensions	sqft	Counted as living area
1	Hall	8'3" x 11'6"	95 sq. ft	No
2	Utility	14'4" x 15'10"	228 sq. ft	No
3	Hall	8'2" x 12'11"	106 sq. ft	No
4	Laundry	8'3" x 8'4"	68 sq. ft	No
5	Basement	23'1" x 12'7"	290 sq. ft	No

## Home data report

102 Willett Avenue, Riverside, Providence County, Rhode Island, United States, 02915



## Room dimensions

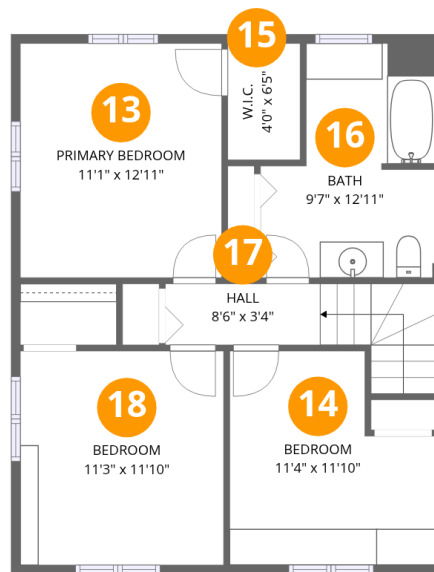
Floor 2

Total:771sqft Excluded: 0sqft

#		Dimensions	sqft	Counted as living area
6	Living Room	14'0" x 15'6"	217 sq. ft	Yes
7	Foyer	8'5" x 8'5"	71 sq. ft	Yes
8	Entry	3'0" x 3'4"	10 sq. ft	Yes
9	Hall	4'8" x 6'7"	31 sq. ft	Yes
10	Kitchen	11'5" x 12'11"	147 sq. ft	Yes
11	Dining Area	11'1" x 12'11"	144 sq. ft	Yes
12	Office	8'4" x 12'9"	107 sq. ft	Yes

## Home data report

102 Willett Avenue, Riverside, Providence County, Rhode Island, United States, 02915



## Room dimensions

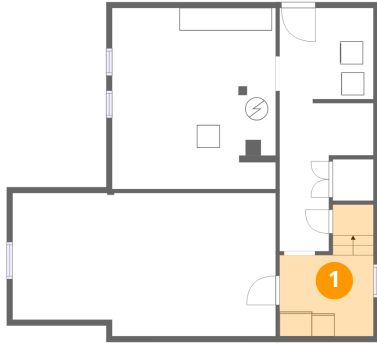
Floor 3

Total:659sqft

Excluded: 0sqft

#		Dimensions	sqft	Counted as living area
13	Primary Bedroom	11'1" x 12'11"	143 sq. ft	Yes
14	Bedroom	11'4" x 11'10"	134 sq. ft	Yes
15	W.I.C.	4'0" x 6'5"	26 sq. ft	Yes
16	Bath	9'7" x 12'11"	124 sq. ft	Yes
17	Hall	8'6" x 3'4"	28 sq. ft	Yes
18	Bedroom	11'3" x 11'10"	132 sq. ft	Yes

## 1 Floor 1 - Hall



Dimensions: 8'3" x 11'6"  
Area: 95 sq. ft  
Counted as living area: No

Heated: Yes  
Finished: No  
Enclosed: Yes  
Contiguous: Yes  
Permitted: Yes  
Wet space: No  
Addition: No  
Conversion: No

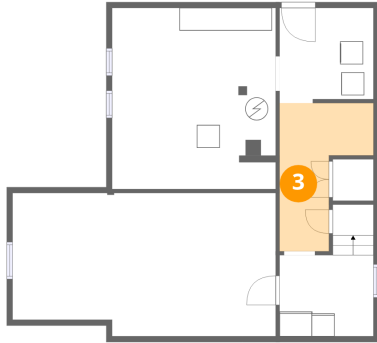
## 2 Floor 1 - Utility



Dimensions: 14'4" x 15'10"  
Area: 228 sq. ft  
Counted as living area: No

Heated: Yes  
Finished: No  
Enclosed: Yes  
Contiguous: Yes  
Permitted: Yes  
Wet space: No  
Addition: No  
Conversion: No

**3** Floor 1 - Hall



Dimensions: 8'2" x 12'11"  
Area: 106 sq. ft  
Counted as living area: No

Heated: Yes  
Finished: No  
Enclosed: Yes  
Contiguous: Yes  
Permitted: Yes  
Wet space: No  
Addition: No  
Conversion: No

**4** Floor 1 - Laundry



Dimensions: 8'3" x 8'4"  
Area: 68 sq. ft  
Counted as living area: No

Heated: Yes  
Finished: No  
Enclosed: Yes  
Contiguous: Yes  
Permitted: Yes  
Wet space: No  
Addition: No  
Conversion: No

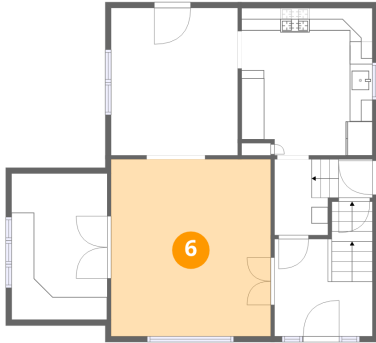
**5** Floor 1 - Basement



Dimensions: 23'1" x 12'7"  
Area: 290 sq. ft  
Counted as living area: No

Heated: Yes  
Finished: No  
Enclosed: Yes  
Contiguous: Yes  
Permitted: Yes  
Wet space: No  
Addition: No  
Conversion: No

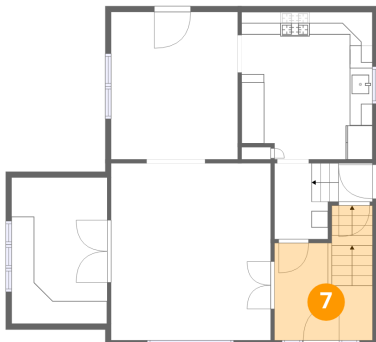
**6** Floor 2 - Living Room



Dimensions: 14'0" x 15'6"  
Area: 217 sq. ft  
Counted as living area: Yes

Heated: Yes  
Finished: Yes  
Enclosed: Yes  
Contiguous: Yes  
Permitted: Yes  
Wet space: No  
Addition: No  
Conversion: No

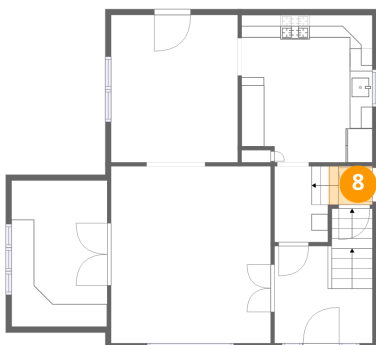
**7** Floor 2 - Foyer



Dimensions: 8'5" x 8'5"  
Area: 71 sq. ft  
Counted as living area: Yes

Heated: Yes  
Finished: Yes  
Enclosed: Yes  
Contiguous: Yes  
Permitted: Yes  
Wet space: No  
Addition: No  
Conversion: No

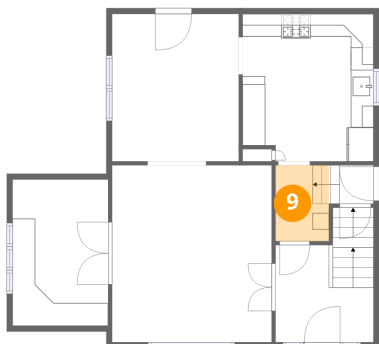
**8** Floor 2 - Entry



Dimensions: 3'0" x 3'4"  
Area: 10 sq. ft  
Counted as living area: Yes

Heated: Yes  
Finished: Yes  
Enclosed: Yes  
Contiguous: Yes  
Permitted: Yes  
Wet space: No  
Addition: No  
Conversion: No

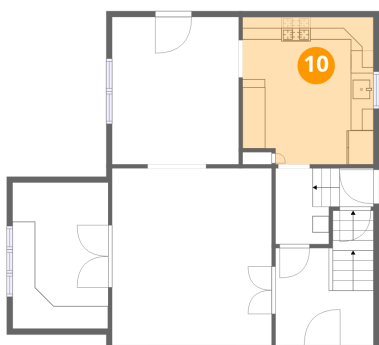
### 9 Floor 2 - Hall



Dimensions: 4'8" x 6'7"  
Area: 31 sq. ft  
Counted as living area: Yes

Heated: Yes  
Finished: Yes  
Enclosed: Yes  
Contiguous: Yes  
Permitted: Yes  
Wet space: No  
Addition: No  
Conversion: No

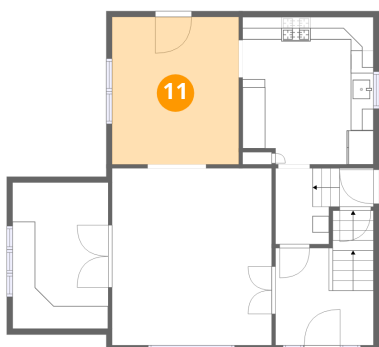
### 10 Floor 2 - Kitchen



Dimensions: 11'5" x 12'11"  
Area: 147 sq. ft  
Counted as living area: Yes

Heated: Yes  
Finished: Yes  
Enclosed: Yes  
Contiguous: Yes  
Permitted: Yes  
Wet space: No  
Addition: No  
Conversion: No

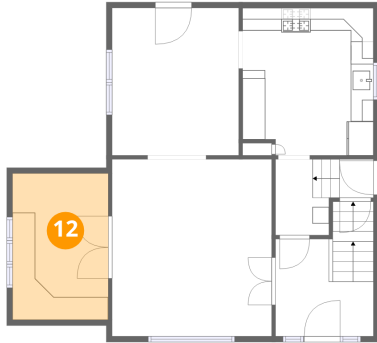
### 11 Floor 2 - Dining Area



Dimensions: 11'1" x 12'11"  
Area: 144 sq. ft  
Counted as living area: Yes

Heated: Yes  
Finished: Yes  
Enclosed: Yes  
Contiguous: Yes  
Permitted: Yes  
Wet space: No  
Addition: No  
Conversion: No

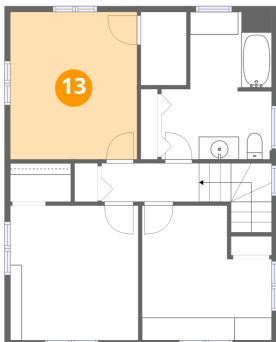
**12** Floor 2 - Office



Dimensions: 8'4" x 12'9"  
Area: 107 sq. ft  
Counted as living area: Yes

Heated: Yes  
Finished: Yes  
Enclosed: Yes  
Contiguous: Yes  
Permitted: Yes  
Wet space: No  
Addition: No  
Conversion: No

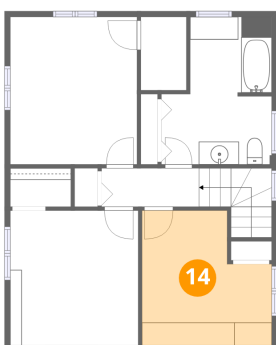
**13** Floor 3 - Primary Bedroom



Dimensions: 11'1" x 12'11"  
Area: 143 sq. ft  
Counted as living area: Yes

Heated: Yes  
Finished: Yes  
Enclosed: Yes  
Contiguous: Yes  
Permitted: Yes  
Wet space: No  
Addition: No  
Conversion: No

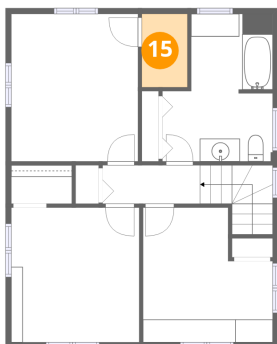
**14** Floor 3 - Bedroom



Dimensions: 11'4" x 11'10"  
Area: 134 sq. ft  
Counted as living area: Yes

Heated: Yes  
Finished: Yes  
Enclosed: Yes  
Contiguous: Yes  
Permitted: Yes  
Wet space: No  
Addition: No  
Conversion: No

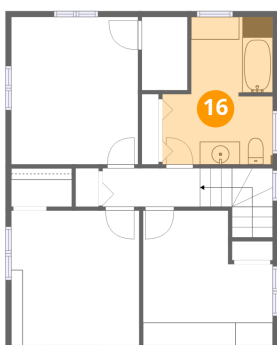
**15** Floor 3 - W.I.C.



Dimensions: 4'0" x 6'5"  
Area: 26 sq. ft  
Counted as living area: Yes

Heated: Yes  
Finished: Yes  
Enclosed: Yes  
Contiguous: Yes  
Permitted: Yes  
Wet space: No  
Addition: No  
Conversion: No

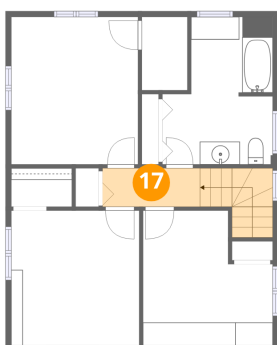
**16** Floor 3 - Bath



Dimensions: 9'7" x 12'11"  
Area: 124 sq. ft  
Counted as living area: Yes

Heated: Yes  
Finished: Yes  
Enclosed: Yes  
Contiguous: Yes  
Permitted: Yes  
Wet space: Yes  
Addition: No  
Conversion: No

**17** Floor 3 - Hall



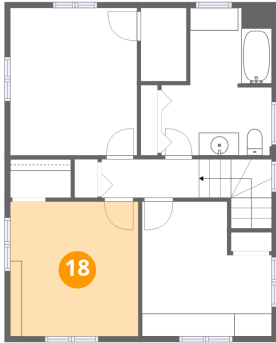
Dimensions: 8'6" x 3'4"  
Area: 28 sq. ft  
Counted as living area: Yes

Heated: Yes  
Finished: Yes  
Enclosed: Yes  
Contiguous: Yes  
Permitted: Yes  
Wet space: No  
Addition: No  
Conversion: No

Home data report

102 Willett Avenue, Riverside, Providence County, Rhode Island,  
United States, 02915

**18** Floor 3 - Bedroom



Dimensions: 11'3" x 11'10"  
Area: 132 sq. ft  
Counted as living area: Yes

Heated: Yes  
Finished: Yes  
Enclosed: Yes  
Contiguous: Yes  
Permitted: Yes  
Wet space: No  
Addition: No  
Conversion: No