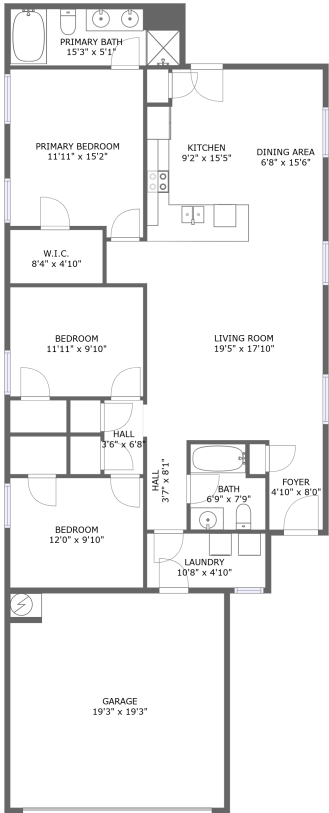


Home report

134 Pitts Griffin Drive, Triana, Madison, Madison County,
Alabama, United States, 35756



FLOOR 1

Total Area: 1478 sq. ft

Floor 1: 1478 sq. ft

Excluded: Garage 370 sq. ft ft

Property summary



1 Floors



3 Bedrooms



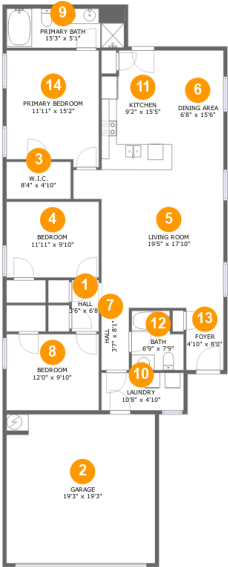
2 Bathrooms



1 Garages

Home report

134 Pitts Griffin Drive, Triana, Madison, Madison County,
Alabama, United States, 35756



Room dimensions

Floor 1 Total:1478sqft Excluded: 370sqft

| # | | Max Dimensions | sqft | Included |
|----|--------------|----------------|------------|----------|
| 1 | Hall | 3'6" x 6'8" | 23 sq. ft | Yes |
| 2 | Garage | 19'3" x 19'3" | 370 sq. ft | No |
| 3 | W.I.C. | 8'4" x 4'10" | 40 sq. ft | Yes |
| 4 | Bedroom | 11'11" x 9'10" | 118 sq. ft | Yes |
| 5 | Living Room | 19'5" x 17'10" | 297 sq. ft | Yes |
| 6 | Dining Area | 6'8" x 15'6" | 103 sq. ft | Yes |
| 7 | Hall | 3'7" x 8'1" | 29 sq. ft | Yes |
| 8 | Bedroom | 12'0" x 9'10" | 118 sq. ft | Yes |
| 9 | Primary Bath | 15'3" x 5'1" | 78 sq. ft | Yes |
| 10 | Laundry | 10'8" x 4'10" | 52 sq. ft | Yes |
| 11 | Kitchen | 9'2" x 15'5" | 134 sq. ft | Yes |

Home report

134 Pitts Griffin Drive, Triana, Madison, Madison County,
Alabama, United States, 35756

| # | | Max Dimensions | sqft | Included |
|----|-----------------|----------------|------------|----------|
| 12 | Bath | 6'9" x 7'9" | 47 sq. ft | Yes |
| 13 | Foyer | 4'10" x 8'0" | 39 sq. ft | Yes |
| 14 | Primary Bedroom | 11'11" x 15'2" | 172 sq. ft | Yes |

134 Pitts Griffin Drive, Triana, Madison, Madison County,
Alabama, United States, 35756

1 Floor 1 - Hall



Max Dimensions: 3'6" x 6'8"
Calculated Area: 23 sq. ft
Included: Yes

Heated: Yes
Finished: Yes
Enclosed: Yes
Contiguous: Yes
Permitted: Yes
Wet space: No
Addition: No
Conversion: No

2 Floor 1 - Garage



Max Dimensions: 19'3" x 19'3"
Calculated Area: 370 sq. ft
Included: No

Heated: No
Finished: No
Enclosed: Yes
Contiguous: Yes
Permitted: Yes
Wet space: No
Addition: No
Conversion: No

134 Pitts Griffin Drive, Triana, Madison, Madison County,
Alabama, United States, 35756

3 Floor 1 - W.I.C.



Max Dimensions: 8'4" x 4'10"
Calculated Area: 40 sq. ft
Included: Yes

Heated: Yes
Finished: Yes
Enclosed: Yes
Contiguous: Yes
Permitted: Yes
Wet space: No
Addition: No
Conversion: No

4 Floor 1 - Bedroom



Max Dimensions: 11'11" x 9'10"
Calculated Area: 118 sq. ft
Included: Yes

Heated: Yes
Finished: Yes
Enclosed: Yes
Contiguous: Yes
Permitted: Yes
Wet space: No
Addition: No
Conversion: No

5 Floor 1 - Living Room



Max Dimensions: 19'5" x 17'10"
Calculated Area: 297 sq. ft
Included: Yes

Heated: Yes
Finished: Yes
Enclosed: Yes
Contiguous: Yes
Permitted: Yes
Wet space: No
Addition: No
Conversion: No

134 Pitts Griffin Drive, Triana, Madison, Madison County,
Alabama, United States, 35756

6 Floor 1 - Dining Area



Max Dimensions: 6'8" x 15'6"
Calculated Area: 103 sq. ft
Included: Yes

Heated: Yes
Finished: Yes
Enclosed: Yes
Contiguous: Yes
Permitted: Yes
Wet space: No
Addition: No
Conversion: No

7 Floor 1 - Hall



Max Dimensions: 3'7" x 8'1"
Calculated Area: 29 sq. ft
Included: Yes

Heated: Yes
Finished: Yes
Enclosed: Yes
Contiguous: Yes
Permitted: Yes
Wet space: No
Addition: No
Conversion: No

8 Floor 1 - Bedroom



Max Dimensions: 12'0" x 9'10"
Calculated Area: 118 sq. ft
Included: Yes

Heated: Yes
Finished: Yes
Enclosed: Yes
Contiguous: Yes
Permitted: Yes
Wet space: No
Addition: No
Conversion: No

134 Pitts Griffin Drive, Triana, Madison, Madison County,
Alabama, United States, 35756

9 Floor 1 - Primary Bath



Max Dimensions: 15'3" x 5'1"
Calculated Area: 78 sq. ft
Included: Yes

Heated: Yes
Finished: Yes
Enclosed: Yes
Contiguous: Yes
Permitted: Yes
Wet space: Yes
Addition: No
Conversion: No

10 Floor 1 - Laundry



Max Dimensions: 10'8" x 4'10"
Calculated Area: 52 sq. ft
Included: Yes

Heated: Yes
Finished: Yes
Enclosed: Yes
Contiguous: Yes
Permitted: Yes
Wet space: No
Addition: No
Conversion: No

11 Floor 1 - Kitchen



Max Dimensions: 9'2" x 15'5"
Calculated Area: 134 sq. ft
Included: Yes

Heated: Yes
Finished: Yes
Enclosed: Yes
Contiguous: Yes
Permitted: Yes
Wet space: No
Addition: No
Conversion: No

134 Pitts Griffin Drive, Triana, Madison, Madison County,
Alabama, United States, 35756

12 Floor 1 - Bath



Max Dimensions: 6'9" x 7'9"
Calculated Area: 47 sq. ft
Included: Yes

Heated: Yes
Finished: Yes
Enclosed: Yes
Contiguous: Yes
Permitted: Yes
Wet space: Yes
Addition: No
Conversion: No

13 Floor 1 - Foyer



Max Dimensions: 4'10" x 8'0"
Calculated Area: 39 sq. ft
Included: Yes

Heated: Yes
Finished: Yes
Enclosed: Yes
Contiguous: Yes
Permitted: Yes
Wet space: No
Addition: No
Conversion: No

14 Floor 1 - Primary Bedroom



Max Dimensions: 11'11" x 15'2"
Calculated Area: 172 sq. ft
Included: Yes

Heated: Yes
Finished: Yes
Enclosed: Yes
Contiguous: Yes
Permitted: Yes
Wet space: No
Addition: No
Conversion: No