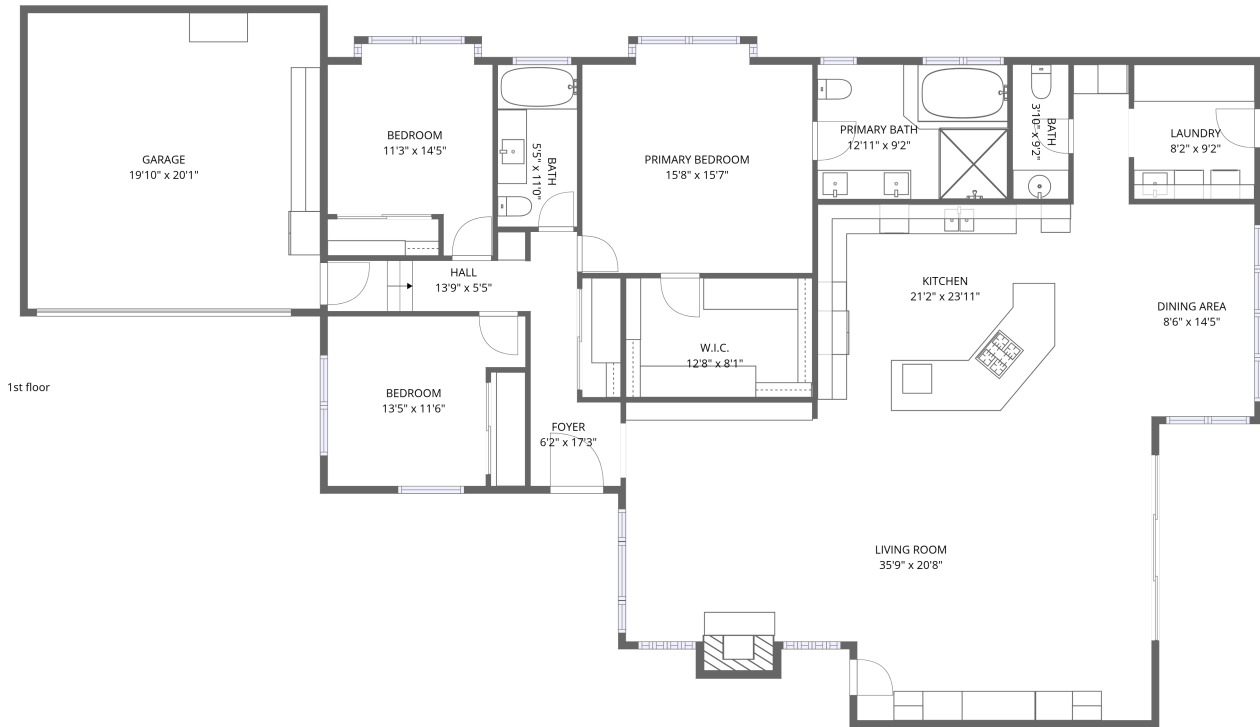


Home data report

5346 Ironwood St, Rancho Palos Verdes, CA, US

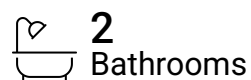
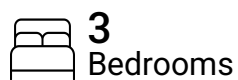


Total Area: 2677 sq. ft

1st Floor: 2677 sq. ft

Excluded: Fireplace 12 sq. ft, Walls: 141 sq. ft

Property summary



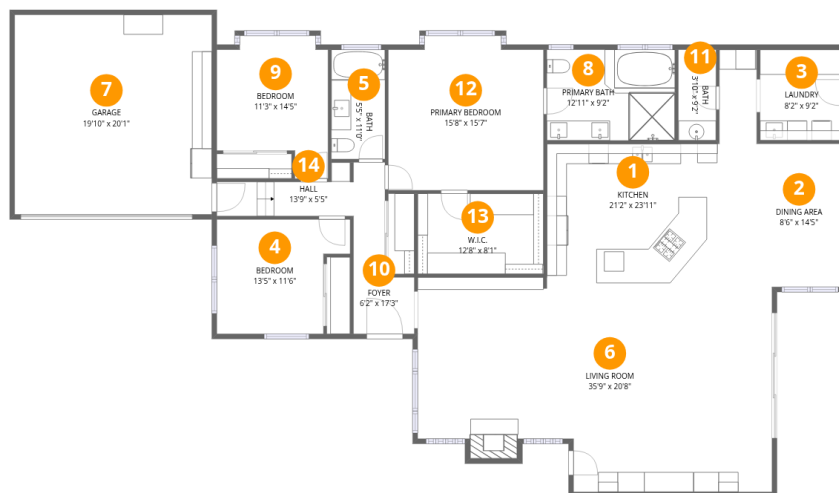
Home data report

5346 Ironwood St, Rancho Palos Verdes, CA, US

 **1**
Half baths

 **1**
Garages

5346 Ironwood St, Rancho Palos Verdes, CA, US



Room dimensions

Floor 1

Total: 2677 sqft Excluded: 12 sqft

#		Dimensions	sqft	Counted as living area
1	Kitchen	21'2" x 23'11"	341 sq. ft	Yes
2	Dining Area	8'6" x 14'5"	123 sq. ft	Yes
3	Laundry	8'2" x 9'2"	75 sq. ft	Yes
4	Bedroom	13'5" x 11'6"	133 sq. ft	Yes
5	Bath	5'5" x 11'0"	60 sq. ft	Yes
6	Living Room	35'9" x 20'8"	675 sq. ft	Yes
7	Garage	19'10" x 20'1"	400 sq. ft	Yes
8	Primary Bath	12'11" x 9'2"	118 sq. ft	Yes
9	Bedroom	11'3" x 14'5"	134 sq. ft	Yes
10	Foyer	6'2" x 17'3"	72 sq. ft	Yes
11	Bath	3'10" x 9'2"	35 sq. ft	Yes

Home data report

5346 Ironwood St,Rancho Palos Verdes,CA,US

#		Dimensions	sqft	Counted as living area
12	Primary Bedroom	15'8" x 15'7"	233 sq. ft	Yes
13	W.I.C.	12'8" x 8'1"	103 sq. ft	Yes
14	Hall	13'9" x 5'5"	51 sq. ft	Yes

1 Floor 1 - Kitchen



Dimensions: 21'2" x 23'11"
Area: 341 sq. ft
Counted as living area: Yes

Heated: Yes
Finished: Yes
Enclosed: Yes
Contiguous: Yes
Permitted: Yes
Wet space: No
Addition: No
Conversion: No

2 Floor 1 - Dining Area



Dimensions: 8'6" x 14'5"
Area: 123 sq. ft
Counted as living area: Yes

Heated: Yes
Finished: Yes
Enclosed: Yes
Contiguous: Yes
Permitted: Yes
Wet space: No
Addition: No
Conversion: No

3 Floor 1 - Laundry



Dimensions: 8'2" x 9'2"
Area: 75 sq. ft
Counted as living area: Yes

Heated: Yes
Finished: Yes
Enclosed: Yes
Contiguous: Yes
Permitted: Yes
Wet space: No
Addition: No
Conversion: No

4 Floor 1 - Bedroom



Dimensions: 13'5" x 11'6"
Area: 133 sq. ft
Counted as living area: Yes

Heated: Yes
Finished: Yes
Enclosed: Yes
Contiguous: Yes
Permitted: Yes
Wet space: No
Addition: No
Conversion: No

5 Floor 1 - Bath



Dimensions: 5'5" x 11'0"
Area: 60 sq. ft
Counted as living area: Yes

Heated: Yes
Finished: Yes
Enclosed: Yes
Contiguous: Yes
Permitted: Yes
Wet space: Yes
Addition: No
Conversion: No

6 Floor 1 - Living Room



Dimensions: 35'9" x 20'8"
Area: 675 sq. ft
Counted as living area: Yes

Heated: Yes
Finished: Yes
Enclosed: Yes
Contiguous: Yes
Permitted: Yes
Wet space: No
Addition: No
Conversion: No

7 Floor 1 - Garage



Dimensions: 19'10" x 20'1"
Area: 400 sq. ft
Counted as living area: No

Heated: No
Finished: Yes
Enclosed: Yes
Contiguous: Yes
Permitted: Yes
Wet space: No
Addition: No
Conversion: No

8 Floor 1 - Primary Bath



Dimensions: 12'11" x 9'2"
Area: 118 sq. ft
Counted as living area: Yes

Heated: Yes
Finished: Yes
Enclosed: Yes
Contiguous: Yes
Permitted: Yes
Wet space: Yes
Addition: No
Conversion: No

9 Floor 1 - Bedroom



Dimensions: 11'3" x 14'5"
Area: 134 sq. ft
Counted as living area: Yes

Heated: Yes
Finished: Yes
Enclosed: Yes
Contiguous: Yes
Permitted: Yes
Wet space: No
Addition: No
Conversion: No

10 Floor 1 - Foyer



Dimensions: 6'2" x 17'3"
Area: 72 sq. ft
Counted as living area: Yes

Heated: Yes
Finished: Yes
Enclosed: Yes
Contiguous: Yes
Permitted: Yes
Wet space: No
Addition: No
Conversion: No

11 Floor 1 - Bath



Dimensions: 3'10" x 9'2"
Area: 35 sq. ft
Counted as living area: Yes

Heated: Yes
Finished: Yes
Enclosed: Yes
Contiguous: Yes
Permitted: Yes
Wet space: Yes
Addition: No
Conversion: No

12 Floor 1 - Primary Bedroom



Dimensions: 15'8" x 15'7"
Area: 233 sq. ft
Counted as living area: Yes

Heated: Yes
Finished: Yes
Enclosed: Yes
Contiguous: Yes
Permitted: Yes
Wet space: No
Addition: No
Conversion: No

13 Floor 1 - W.I.C.



Dimensions: 12'8" x 8'1"
Area: 103 sq. ft
Counted as living area: Yes

Heated: Yes
Finished: Yes
Enclosed: Yes
Contiguous: Yes
Permitted: Yes
Wet space: No
Addition: No
Conversion: No

14 Floor 1 - Hall



Dimensions: 13'9" x 5'5"
Area: 51 sq. ft
Counted as living area: Yes

Heated: Yes
Finished: Yes
Enclosed: Yes
Contiguous: Yes
Permitted: Yes
Wet space: No
Addition: No
Conversion: No