



Total Area: 2408 sq. ft

Basement: 613 sq. ft, 1st Floor: 796 sq. ft, 2nd Floor: 999 sq. ft

Excluded: Utility 181 sq. ft, Garage 246 sq. ft, Fireplace 9 sq. ft, Open to below 5 sq. ft,

Walls: 145 sq. ft

Property summary

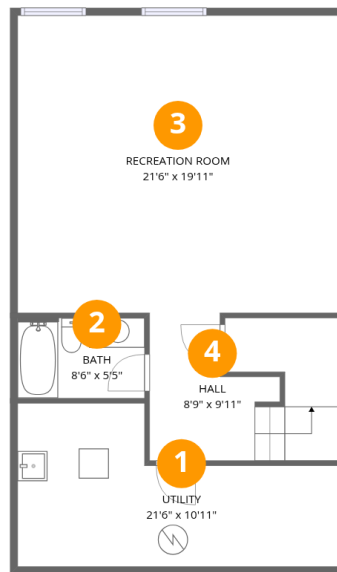


Home data report

6830 Breanna Cardill Street, Greely, Ontario, Canada, K4P 0C1

 **1**
Half baths

 **1**
Garages



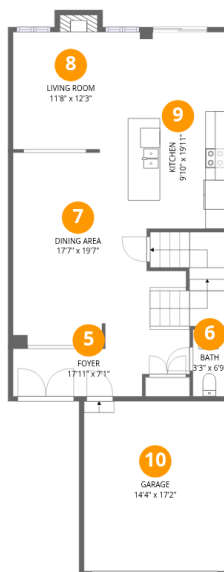
Room dimensions

Floor 1 Below grade

Total:613sqft

Excluded: 181sqft

#		Dimensions	sqft	Counted as living area
1	Utility	21'6" x 10'11"	235 sq. ft	No
2	Bath	8'6" x 5'5"	46 sq. ft	Yes
3	Recreation Room	21'6" x 19'11"	428 sq. ft	Yes
4	Hall	8'9" x 9'11"	86 sq. ft	Yes



Room dimensions

Floor 2

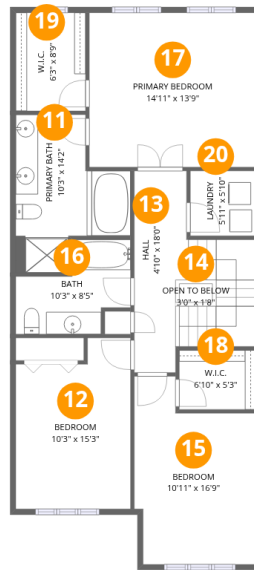
Total:796sqft

Excluded: 255sqft

#		Dimensions	sqft	Counted as living area
5	Foyer	17'11" x 7'1"	127 sq. ft	Yes
6	Bath	3'3" x 6'9"	22 sq. ft	Yes
7	Dining Area	17'7" x 19'7"	343 sq. ft	Yes
8	Living Room	11'8" x 12'3"	143 sq. ft	Yes
9	Kitchen	9'10" x 19'11"	196 sq. ft	Yes
10	Garage	14'4" x 17'2"	246 sq. ft	No

Home data report

6830 Breanna Cardill Street, Greely, Ontario, Canada, K4P 0C1



Room dimensions

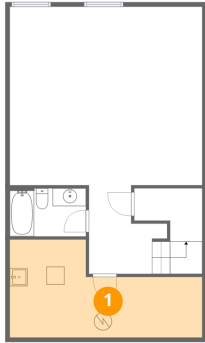
Floor 3

Total:999sqft

Excluded: 5sqft

#		Dimensions	sqft	Counted as living area
11	Primary Bath	10'3" x 14'2"	145 sq. ft	Yes
12	Bedroom	10'3" x 15'3"	157 sq. ft	Yes
13	Hall	4'10" x 18'0"	87 sq. ft	Yes
14	Open To Below	3'0" x 1'8"	5 sq. ft	No
15	Bedroom	10'11" x 16'9"	183 sq. ft	Yes
16	Bath	10'3" x 8'5"	87 sq. ft	Yes
17	Primary Bedroom	14'11" x 13'9"	205 sq. ft	Yes
18	W.I.C.	6'10" x 5'3"	36 sq. ft	Yes
19	W.I.C.	6'3" x 8'9"	55 sq. ft	Yes
20	Laundry	5'11" x 5'10"	34 sq. ft	Yes

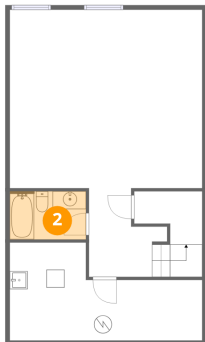
1 Floor 1 - Utility



Dimensions: 21'6" x 10'11"
Area: 235 sq. ft
Counted as living area: No

Heated: Yes
Finished: No
Enclosed: Yes
Contiguous: Yes
Permitted: Yes
Wet space: No
Addition: No
Conversion: No

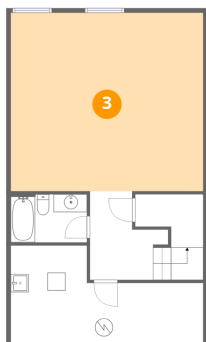
2 Floor 1 - Bath



Dimensions: 8'6" x 5'5"
Area: 46 sq. ft
Counted as living area: Yes

Heated: Yes
Finished: Yes
Enclosed: Yes
Contiguous: Yes
Permitted: Yes
Wet space: Yes
Addition: No
Conversion: No

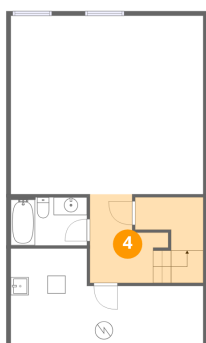
3 Floor 1 - Recreation Room



Dimensions: 21'6" x 19'11"
Area: 428 sq. ft
Counted as living area: Yes

Heated: Yes
Finished: Yes
Enclosed: Yes
Contiguous: Yes
Permitted: Yes
Wet space: No
Addition: No
Conversion: No

4 Floor 1 - Hall



Dimensions: 8'9" x 9'11"
Area: 86 sq. ft
Counted as living area: Yes

Heated: Yes
Finished: Yes
Enclosed: Yes
Contiguous: Yes
Permitted: Yes
Wet space: No
Addition: No
Conversion: No

5 Floor 2 - Foyer



Dimensions: 17'11" x 7'1"
Area: 127 sq. ft
Counted as living area: Yes

Heated: Yes
Finished: Yes
Enclosed: Yes
Contiguous: Yes
Permitted: Yes
Wet space: No
Addition: No
Conversion: No

6 Floor 2 - Bath



Dimensions: 3'3" x 6'9"
Area: 22 sq. ft
Counted as living area: Yes

Heated: Yes
Finished: Yes
Enclosed: Yes
Contiguous: Yes
Permitted: Yes
Wet space: Yes
Addition: No
Conversion: No

7 Floor 2 - Dining Area



Dimensions: 17'7" x 19'7"
Area: 343 sq. ft
Counted as living area: Yes

Heated: Yes
Finished: Yes
Enclosed: Yes
Contiguous: Yes
Permitted: Yes
Wet space: No
Addition: No
Conversion: No

8 Floor 2 - Living Room



Dimensions: 11'8" x 12'3"
Area: 143 sq. ft
Counted as living area: Yes

Heated: Yes
Finished: Yes
Enclosed: Yes
Contiguous: Yes
Permitted: Yes
Wet space: No
Addition: No
Conversion: No

9 Floor 2 - Kitchen



Dimensions: 9'10" x 19'11"
Area: 196 sq. ft
Counted as living area: Yes

Heated: Yes
Finished: Yes
Enclosed: Yes
Contiguous: Yes
Permitted: Yes
Wet space: No
Addition: No
Conversion: No

10 Floor 2 - Garage



Dimensions: 14'4" x 17'2"
Area: 246 sq. ft
Counted as living area: No

Heated: No
Finished: No
Enclosed: Yes
Contiguous: Yes
Permitted: Yes
Wet space: No
Addition: No
Conversion: No

11 Floor 3 - Primary Bath



Dimensions: 10'3" x 14'2"
Area: 145 sq. ft
Counted as living area: Yes

Heated: Yes
Finished: Yes
Enclosed: Yes
Contiguous: Yes
Permitted: Yes
Wet space: Yes
Addition: No
Conversion: No

12 Floor 3 - Bedroom



Dimensions: 10'3" x 15'3"
Area: 157 sq. ft
Counted as living area: Yes

Heated: Yes
Finished: Yes
Enclosed: Yes
Contiguous: Yes
Permitted: Yes
Wet space: No
Addition: No
Conversion: No

13 Floor 3 - Hall



Dimensions: 4'10" x 18'0"
Area: 87 sq. ft
Counted as living area: Yes

Heated: Yes
Finished: Yes
Enclosed: Yes
Contiguous: Yes
Permitted: Yes
Wet space: No
Addition: No
Conversion: No

14 Floor 3 - Open To Below



Dimensions: 3'0" x 1'8"
Area: 5 sq. ft
Counted as living area: No

Heated: No
Finished: No
Enclosed: No
Contiguous: Yes
Permitted: No
Wet space: No
Addition: No
Conversion: No

15 Floor 3 - Bedroom



Dimensions: 10'11" x 16'9"
Area: 183 sq. ft
Counted as living area: Yes

Heated: Yes
Finished: Yes
Enclosed: Yes
Contiguous: Yes
Permitted: Yes
Wet space: No
Addition: No
Conversion: No

16 Floor 3 - Bath



Dimensions: 10'3" x 8'5"
Area: 87 sq. ft
Counted as living area: Yes

Heated: Yes
Finished: Yes
Enclosed: Yes
Contiguous: Yes
Permitted: Yes
Wet space: Yes
Addition: No
Conversion: No

17 Floor 3 - Primary Bedroom



Dimensions: 14'11" x 13'9"
Area: 205 sq. ft
Counted as living area: Yes

Heated: Yes
Finished: Yes
Enclosed: Yes
Contiguous: Yes
Permitted: Yes
Wet space: No
Addition: No
Conversion: No

18 Floor 3 - W.I.C.



Dimensions: 6'10" x 5'3"
Area: 36 sq. ft
Counted as living area: Yes

Heated: Yes
Finished: Yes
Enclosed: Yes
Contiguous: Yes
Permitted: Yes
Wet space: No
Addition: No
Conversion: No

19 Floor 3 - W.I.C.



Dimensions: 6'3" x 8'9"
Area: 55 sq. ft
Counted as living area: Yes

Heated: Yes
Finished: Yes
Enclosed: Yes
Contiguous: Yes
Permitted: Yes
Wet space: No
Addition: No
Conversion: No

20 Floor 3 - Laundry



Dimensions: 5'11" x 5'10"
Area: 34 sq. ft
Counted as living area: Yes

Heated: Yes
Finished: Yes
Enclosed: Yes
Contiguous: Yes
Permitted: Yes
Wet space: No
Addition: No
Conversion: No