

Home data report

201 Spyglass Lane, Huddleston, Bedford County, Virginia, United States, 24104



Total Area: 3529 sq. ft

1st Floor: 1189 sq. ft, 2nd Floor: 1540 sq. ft, 3rd Floor: 800 sq. ft

Excluded: Garage 426 sq. ft, Storage 21 sq. ft, Undefined 24 sq. ft, Fireplace 36 sq. ft, Deck 528 sq. ft, Open to below 282 sq. ft, Walls: 273 sq. ft

Property summary

 **3** Floors

 **4** Bedrooms

 **3** Bathrooms

Home data report

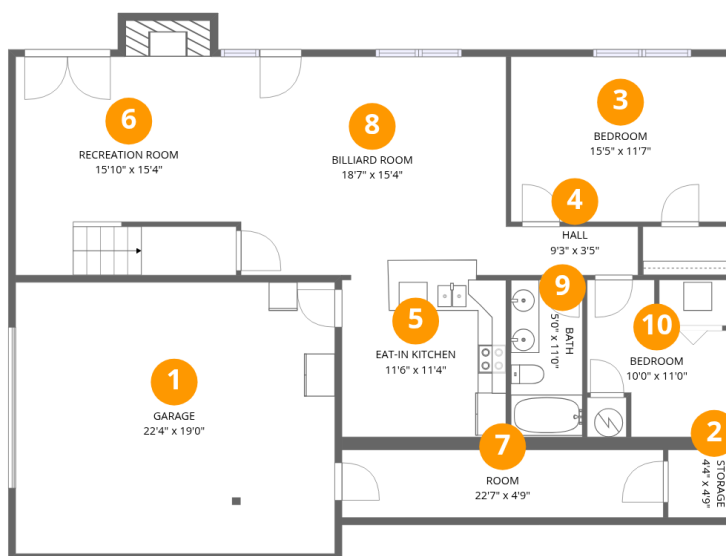
**201 Spyglass Lane, Huddleston, Bedford County, Virginia,
United States, 24104**

 **1**
Half baths

 **1**
Garages

Home data report

201 Spyglass Lane, Huddleston, Bedford County, Virginia,
United States, 24104



Room dimensions

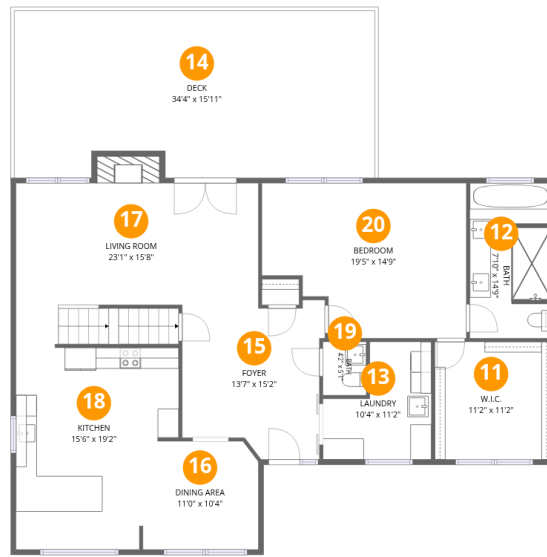
Floor 1

Total: 1189sqft Excluded: 489sqft

#		Dimensions	sqft	Counted as living area
1	Garage	22'4" x 19'0"	426 sq. ft	No
2	Storage	4'4" x 4'9"	21 sq. ft	No
3	Bedroom	15'5" x 11'7"	178 sq. ft	Yes
4	Hall	9'3" x 3'5"	31 sq. ft	Yes
5	Eat-in Kitchen	11'6" x 11'4"	130 sq. ft	Yes
6	Recreation Room	15'10" x 15'4"	254 sq. ft	Yes
7	Room	22'7" x 4'9"	107 sq. ft	Yes
8	Billiard Room	18'7" x 15'4"	285 sq. ft	Yes
9	Bath	5'0" x 11'0"	55 sq. ft	Yes
10	Bedroom	10'0" x 11'0"	82 sq. ft	Yes

Home data report

201 Spyglass Lane, Huddleston, Bedford County, Virginia, United States, 24104



Room dimensions

Floor 2

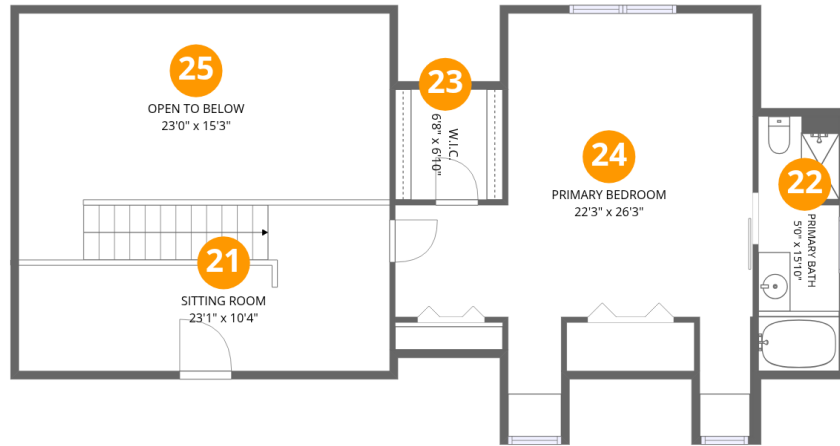
Total:1540sqft

Excluded: 546sqft

#		Dimensions	sqft	Counted as living area
11	W.I.C.	11'2" x 11'2"	125 sq. ft	Yes
12	Bath	7'10" x 14'9"	113 sq. ft	Yes
13	Laundry	10'4" x 11'2"	91 sq. ft	Yes
14	Deck	34'4" x 15'11"	528 sq. ft	No
15	Foyer	13'7" x 15'2"	179 sq. ft	Yes
16	Dining Area	11'0" x 10'4"	112 sq. ft	Yes
17	Living Room	23'1" x 15'8"	339 sq. ft	Yes
18	Kitchen	15'6" x 19'2"	261 sq. ft	Yes
19	Bath	4'2" x 5'1"	21 sq. ft	Yes
20	Bedroom	19'5" x 14'9"	254 sq. ft	Yes

Home data report

201 Spyglass Lane, Huddleston, Bedford County, Virginia,
United States, 24104



Room dimensions

Floor 3

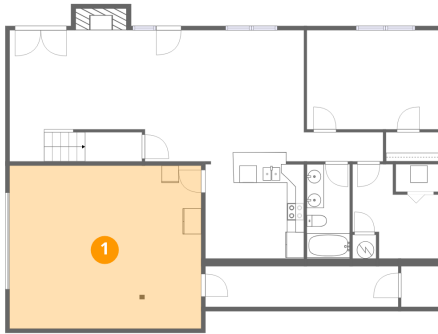
Total:800sqft

Excluded: 282sqft

#		Dimensions	sqft	Counted as living area
21	Sitting Room	23'1" x 10'4"	230 sq. ft	Yes
22	Primary Bath	5'0" x 15'10"	79 sq. ft	Yes
23	W.I.C.	6'8" x 6'10"	46 sq. ft	Yes
24	Primary Bedroom	22'3" x 26'3"	385 sq. ft	Yes
25	Open To Below	23'0" x 15'3"	282 sq. ft	No

201 Spyglass Lane, Huddleston, Bedford County, Virginia,
United States, 24104

1 Floor 1 - Garage



Dimensions: 22'4" x 19'0"
Area: 426 sq. ft
Counted as living area: No

Heated: No
Finished: No
Enclosed: Yes
Contiguous: Yes
Permitted: Yes
Wet space: No
Addition: No
Conversion: No

2 Floor 1 - Storage

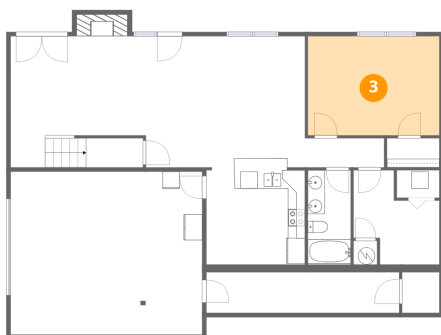


Dimensions: 4'4" x 4'9"
Area: 21 sq. ft
Counted as living area: No

Heated: No
Finished: No
Enclosed: No
Contiguous: Yes
Permitted: Yes
Wet space: No
Addition: No
Conversion: No

201 Spyglass Lane, Huddleston, Bedford County, Virginia,
United States, 24104

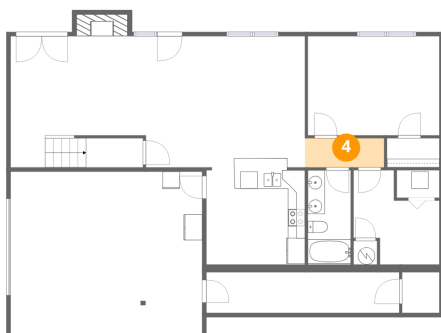
3 Floor 1 - Bedroom



Dimensions: 15'5" x 11'7"
Area: 178 sq. ft
Counted as living area: Yes

Heated: Yes
Finished: Yes
Enclosed: Yes
Contiguous: Yes
Permitted: Yes
Wet space: No
Addition: No
Conversion: No

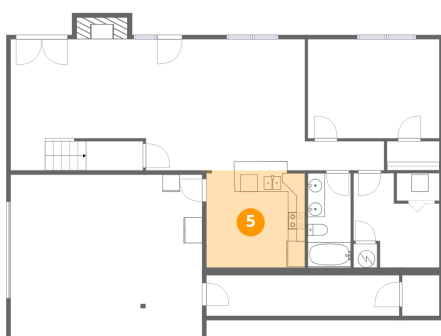
4 Floor 1 - Hall



Dimensions: 9'3" x 3'5"
Area: 31 sq. ft
Counted as living area: Yes

Heated: Yes
Finished: Yes
Enclosed: Yes
Contiguous: Yes
Permitted: Yes
Wet space: No
Addition: No
Conversion: No

5 Floor 1 - Eat-in Kitchen

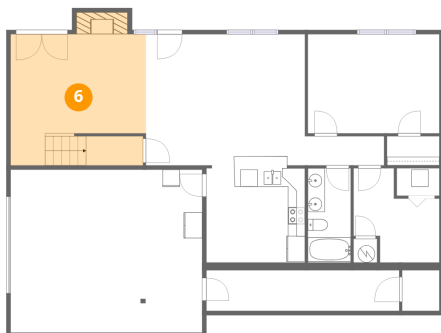


Dimensions: 11'6" x 11'4"
Area: 130 sq. ft
Counted as living area: Yes

Heated: Yes
Finished: Yes
Enclosed: Yes
Contiguous: Yes
Permitted: Yes
Wet space: No
Addition: No
Conversion: No

201 Spyglass Lane, Huddleston, Bedford County, Virginia,
United States, 24104

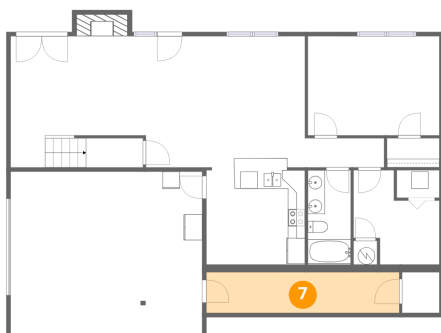
6 Floor 1 - Recreation Room



Dimensions: 15'10" x 15'4"
Area: 254 sq. ft
Counted as living area: Yes

Heated: Yes
Finished: Yes
Enclosed: Yes
Contiguous: Yes
Permitted: Yes
Wet space: No
Addition: No
Conversion: No

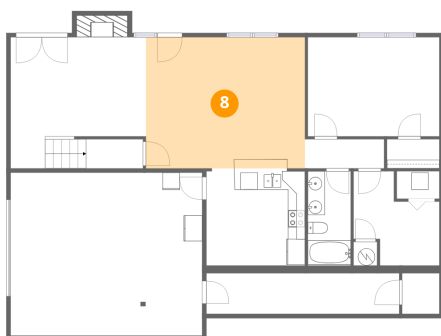
7 Floor 1 - Room



Dimensions: 22'7" x 4'9"
Area: 107 sq. ft
Counted as living area: No

Heated: Yes
Finished: Yes
Enclosed: Yes
Contiguous: No
Permitted: Yes
Wet space: No
Addition: No
Conversion: No

8 Floor 1 - Billiard Room

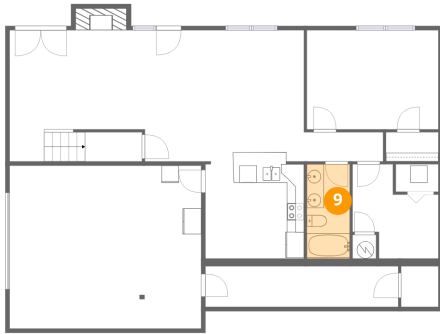


Dimensions: 18'7" x 15'4"
Area: 285 sq. ft
Counted as living area: Yes

Heated: Yes
Finished: Yes
Enclosed: Yes
Contiguous: Yes
Permitted: Yes
Wet space: No
Addition: No
Conversion: No

201 Spyglass Lane, Huddleston, Bedford County, Virginia,
United States, 24104

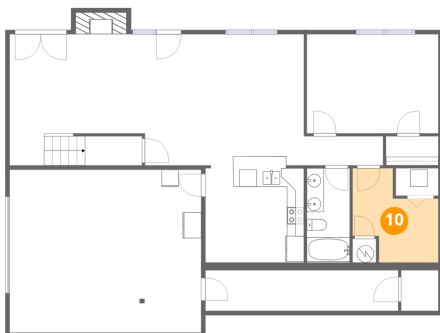
9 Floor 1 - Bath



Dimensions: 5'0" x 11'0"
Area: 55 sq. ft
Counted as living area: Yes

Heated: Yes
Finished: Yes
Enclosed: Yes
Contiguous: Yes
Permitted: Yes
Wet space: Yes
Addition: No
Conversion: No

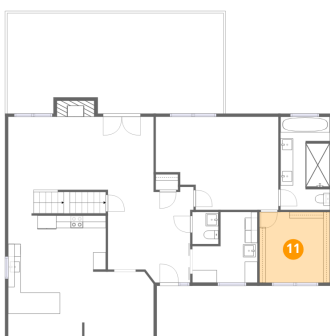
10 Floor 1 - Bedroom



Dimensions: 10'0" x 11'0"
Area: 82 sq. ft
Counted as living area: Yes

Heated: Yes
Finished: Yes
Enclosed: Yes
Contiguous: Yes
Permitted: Yes
Wet space: No
Addition: No
Conversion: No

11 Floor 2 - W.I.C.



Dimensions: 11'2" x 11'2"
Area: 125 sq. ft
Counted as living area: Yes

Heated: Yes
Finished: Yes
Enclosed: Yes
Contiguous: Yes
Permitted: Yes
Wet space: No
Addition: No
Conversion: No

201 Spyglass Lane, Huddleston, Bedford County, Virginia,
United States, 24104

12 Floor 2 - Bath



Dimensions: 7'10" x 14'9"
Area: 113 sq. ft
Counted as living area: Yes

Heated: Yes
Finished: Yes
Enclosed: Yes
Contiguous: Yes
Permitted: Yes
Wet space: Yes
Addition: No
Conversion: No

13 Floor 2 - Laundry



Dimensions: 10'4" x 11'2"
Area: 91 sq. ft
Counted as living area: Yes

Heated: Yes
Finished: Yes
Enclosed: Yes
Contiguous: Yes
Permitted: Yes
Wet space: No
Addition: No
Conversion: No

14 Floor 2 - Deck



Dimensions: 34'4" x 15'11"
Area: 528 sq. ft
Counted as living area: No

Heated: No
Finished: No
Enclosed: No
Contiguous: Yes
Permitted: Yes
Wet space: No
Addition: No
Conversion: No

201 Spyglass Lane, Huddleston, Bedford County, Virginia, United States, 24104

15 Floor 2 - Foyer



Dimensions: 13'7" x 15'2"
Area: 179 sq. ft
Counted as living area: Yes

Heated: Yes
Finished: Yes
Enclosed: Yes
Contiguous: Yes
Permitted: Yes
Wet space: No
Addition: No
Conversion: No

16 Floor 2 - Dining Area



Dimensions: 11'0" x 10'4"
Area: 112 sq. ft
Counted as living area: Yes

Heated: Yes
Finished: Yes
Enclosed: Yes
Contiguous: Yes
Permitted: Yes
Wet space: No
Addition: No
Conversion: No

17 Floor 2 - Living Room



Dimensions: 23'1" x 15'8"
Area: 339 sq. ft
Counted as living area: Yes

Heated: Yes
Finished: Yes
Enclosed: Yes
Contiguous: Yes
Permitted: Yes
Wet space: No
Addition: No
Conversion: No

201 Spyglass Lane, Huddleston, Bedford County, Virginia,
United States, 24104

18 Floor 2 - Kitchen



Dimensions: 15'6" x 19'2"
Area: 261 sq. ft
Counted as living area: Yes

Heated: Yes
Finished: Yes
Enclosed: Yes
Contiguous: Yes
Permitted: Yes
Wet space: No
Addition: No
Conversion: No

19 Floor 2 - Bath



Dimensions: 4'2" x 5'1"
Area: 21 sq. ft
Counted as living area: Yes

Heated: Yes
Finished: Yes
Enclosed: Yes
Contiguous: Yes
Permitted: Yes
Wet space: Yes
Addition: No
Conversion: No

20 Floor 2 - Bedroom

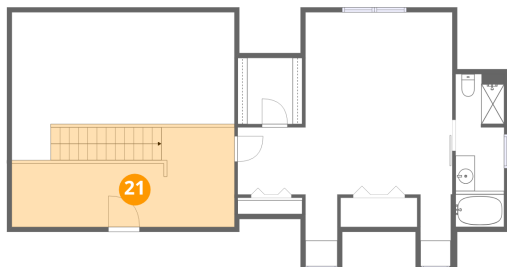


Dimensions: 19'5" x 14'9"
Area: 254 sq. ft
Counted as living area: Yes

Heated: Yes
Finished: Yes
Enclosed: Yes
Contiguous: Yes
Permitted: Yes
Wet space: No
Addition: No
Conversion: No

201 Spyglass Lane, Huddleston, Bedford County, Virginia,
United States, 24104

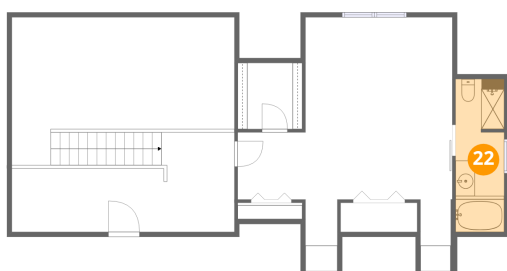
21 Floor 3 - Sitting Room



Dimensions: 23'1" x 10'4"
Area: 230 sq. ft
Counted as living area: Yes

Heated: Yes
Finished: Yes
Enclosed: Yes
Contiguous: Yes
Permitted: Yes
Wet space: No
Addition: No
Conversion: No

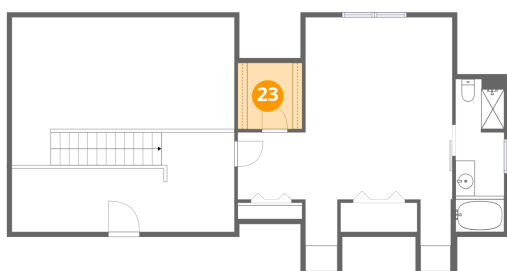
22 Floor 3 - Primary Bath



Dimensions: 5'0" x 15'10"
Area: 79 sq. ft
Counted as living area: Yes

Heated: Yes
Finished: Yes
Enclosed: Yes
Contiguous: Yes
Permitted: Yes
Wet space: Yes
Addition: No
Conversion: No

23 Floor 3 - W.I.C.

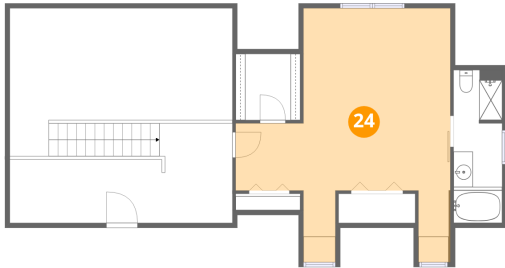


Dimensions: 6'8" x 6'10"
Area: 46 sq. ft
Counted as living area: Yes

Heated: Yes
Finished: Yes
Enclosed: Yes
Contiguous: Yes
Permitted: Yes
Wet space: No
Addition: No
Conversion: No

201 Spyglass Lane, Huddleston, Bedford County, Virginia,
United States, 24104

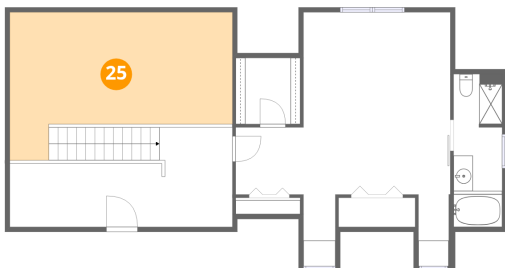
24 Floor 3 - Primary Bedroom



Dimensions: 22'3" x 26'3"
Area: 385 sq. ft
Counted as living area: Yes

Heated: Yes
Finished: Yes
Enclosed: Yes
Contiguous: Yes
Permitted: Yes
Wet space: No
Addition: No
Conversion: No

25 Floor 3 - Open To Below



Dimensions: 23'0" x 15'3"
Area: 282 sq. ft
Counted as living area: No

Heated: No
Finished: No
Enclosed: No
Contiguous: Yes
Permitted: No
Wet space: No
Addition: No
Conversion: No