

Home data report

122 Parcels Crescent, Peterborough, ON, CA



Total Area: 2646 sq. ft

Basement: 987 sq. ft, 1st Floor: 1296 sq. ft, 2nd Floor: 363 sq. ft

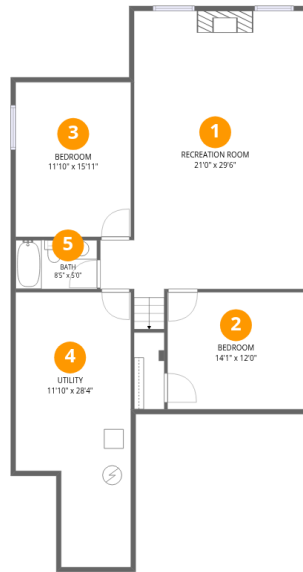
Excluded: Utility 289 sq. ft, Garage 326 sq. ft, Covered deck 290 sq. ft, Deck 539 sq. ft,

Walls: 247 sq. ft

Property summary



122 Parcels Crescent, Peterborough, ON, CA



Room dimensions

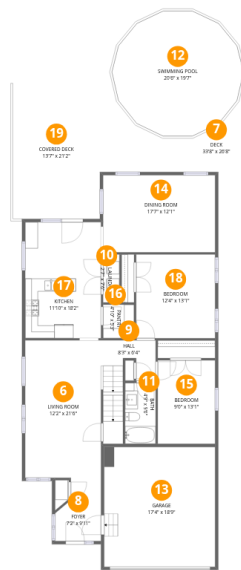
Floor 1 Below grade

Total: 987 sqft

Excluded: 289 sqft

#		Dimensions	sqft	Counted as living area
1	Recreation Room	21'0" x 29'6"	523 sq. ft	Yes
2	Bedroom	14'1" x 12'0"	170 sq. ft	Yes
3	Bedroom	11'10" x 15'11"	189 sq. ft	Yes
4	Utility	11'10" x 28'4"	289 sq. ft	No
5	Bath	8'5" x 5'0"	42 sq. ft	Yes

122 Parcels Crescent, Peterborough, ON, CA



Room dimensions

Floor 2

Total: 1296sqft

Excluded: 1155sqft

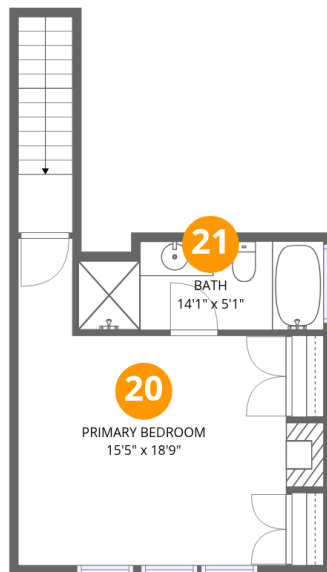
#		Dimensions	sqft	Counted as living area
6	Living Room	12'2" x 21'6"	258 sq. ft	Yes
7	Deck	33'8" x 26'8"	853 sq. ft	No
8	Foyer	7'2" x 9'11"	60 sq. ft	Yes
9	Hall	8'3" x 6'4"	37 sq. ft	Yes
10	Laundry	2'7" x 7'6"	19 sq. ft	Yes
11	Bath	4'9" x 9'6"	46 sq. ft	Yes
12	Swimming Pool	20'6" x 19'7"	314 sq. ft	No
13	Garage	17'4" x 18'9"	326 sq. ft	No
14	Dining Room	17'7" x 12'1"	212 sq. ft	Yes
15	Bedroom	9'0" x 13'1"	117 sq. ft	Yes
16	Pantry	4'10" x 5'3"	26 sq. ft	Yes

Home data report

122 Parcels Crescent, Peterborough, ON, CA

#		Dimensions	sqft	Counted as living area
17	Kitchen	11'10" x 18'2"	216 sq. ft	Yes
18	Bedroom	12'4" x 13'1"	162 sq. ft	Yes
19	Covered Deck	13'7" x 21'2"	290 sq. ft	No

122 Parcels Crescent, Peterborough, ON, CA



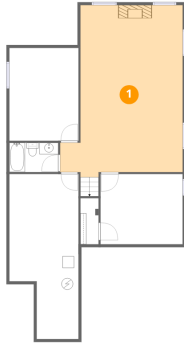
Room dimensions

Floor 3

Total:363sqft Excluded: 0sqft

#		Dimensions	sqft	Counted as living area
20	Primary Bedroom	15'5" x 18'9"	228 sq. ft	Yes
21	Bath	14'1" x 5'1"	68 sq. ft	Yes

1 Floor 1 - Recreation Room



Dimensions: 21'0" x 29'6"
Area: 523 sq. ft
Counted as living area: Yes

Heated: Yes
Finished: Yes
Enclosed: Yes
Contiguous: Yes
Permitted: Yes
Wet space: No
Addition: No
Conversion: No

2 Floor 1 - Bedroom



Dimensions: 14'1" x 12'0"
Area: 170 sq. ft
Counted as living area: Yes

Heated: Yes
Finished: Yes
Enclosed: Yes
Contiguous: Yes
Permitted: Yes
Wet space: No
Addition: No
Conversion: No

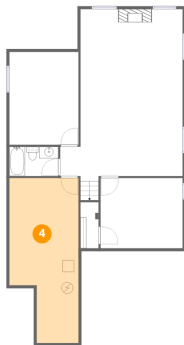
3 Floor 1 - Bedroom



Dimensions: 11'10" x 15'11"
Area: 189 sq. ft
Counted as living area: Yes

Heated: Yes
Finished: Yes
Enclosed: Yes
Contiguous: Yes
Permitted: Yes
Wet space: No
Addition: No
Conversion: No

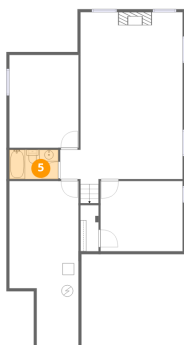
4 Floor 1 - Utility



Dimensions: 11'10" x 28'4"
Area: 289 sq. ft
Counted as living area: No

Heated: Yes
Finished: No
Enclosed: Yes
Contiguous: Yes
Permitted: Yes
Wet space: No
Addition: No
Conversion: No

5 Floor 1 - Bath



Dimensions: 8'5" x 5'0"
Area: 42 sq. ft
Counted as living area: Yes

Heated: Yes
Finished: Yes
Enclosed: Yes
Contiguous: Yes
Permitted: Yes
Wet space: Yes
Addition: No
Conversion: No

6 Floor 2 - Living Room



Dimensions: 12'2" x 21'6"
Area: 258 sq. ft
Counted as living area: Yes

Heated: Yes
Finished: Yes
Enclosed: Yes
Contiguous: Yes
Permitted: Yes
Wet space: No
Addition: No
Conversion: No

7 Floor 2 - Deck



Dimensions: 33'8" x 26'8"
Area: 853 sq. ft
Counted as living area: No

Heated: No
Finished: No
Enclosed: No
Contiguous: Yes
Permitted: Yes
Wet space: No
Addition: No
Conversion: No

8 Floor 2 - Foyer



Dimensions: 7'2" x 9'11"
Area: 60 sq. ft
Counted as living area: Yes

Heated: Yes
Finished: Yes
Enclosed: Yes
Contiguous: Yes
Permitted: Yes
Wet space: No
Addition: No
Conversion: No

9 Floor 2 - Hall



Dimensions: 8'3" x 6'4"
Area: 37 sq. ft
Counted as living area: Yes

Heated: Yes
Finished: Yes
Enclosed: Yes
Contiguous: Yes
Permitted: Yes
Wet space: No
Addition: No
Conversion: No

10 Floor 2 - Laundry



Dimensions: 2'7" x 7'6"
Area: 19 sq. ft
Counted as living area: Yes

Heated: Yes
Finished: Yes
Enclosed: Yes
Contiguous: Yes
Permitted: Yes
Wet space: No
Addition: No
Conversion: No

11 Floor 2 - Bath



Dimensions: 4'9" x 9'6"
Area: 46 sq. ft
Counted as living area: Yes

Heated: Yes
Finished: Yes
Enclosed: Yes
Contiguous: Yes
Permitted: Yes
Wet space: Yes
Addition: No
Conversion: No

12 Floor 2 - Swimming Pool



Dimensions: 20'6" x 19'7"
Area: 314 sq. ft
Counted as living area: No

Heated: No
Finished: No
Enclosed: No
Contiguous: Yes
Permitted: No
Wet space: No
Addition: No
Conversion: No

13 Floor 2 - Garage



Dimensions: 17'4" x 18'9"
Area: 326 sq. ft
Counted as living area: No

Heated: No
Finished: No
Enclosed: Yes
Contiguous: Yes
Permitted: Yes
Wet space: No
Addition: No
Conversion: No

14 Floor 2 - Dining Room



Dimensions: 17'7" x 12'1"
Area: 212 sq. ft
Counted as living area: Yes

Heated: Yes
Finished: Yes
Enclosed: Yes
Contiguous: Yes
Permitted: Yes
Wet space: No
Addition: No
Conversion: No

15 Floor 2 - Bedroom



Dimensions: 9'0" x 13'1"
Area: 117 sq. ft
Counted as living area: Yes

Heated: Yes
Finished: Yes
Enclosed: Yes
Contiguous: Yes
Permitted: Yes
Wet space: No
Addition: No
Conversion: No

16 Floor 2 - Pantry



Dimensions: 4'10" x 5'3"
Area: 26 sq. ft
Counted as living area: Yes

Heated: Yes
Finished: Yes
Enclosed: Yes
Contiguous: Yes
Permitted: Yes
Wet space: No
Addition: No
Conversion: No

17 Floor 2 - Kitchen



Dimensions: 11'10" x 18'2"
Area: 216 sq. ft
Counted as living area: Yes

Heated: Yes
Finished: Yes
Enclosed: Yes
Contiguous: Yes
Permitted: Yes
Wet space: No
Addition: No
Conversion: No

18 Floor 2 - Bedroom



Dimensions: 12'4" x 13'1"
Area: 162 sq. ft
Counted as living area: Yes

Heated: Yes
Finished: Yes
Enclosed: Yes
Contiguous: Yes
Permitted: Yes
Wet space: No
Addition: No
Conversion: No

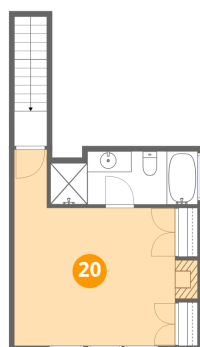
19 Floor 2 - Covered Deck



Dimensions: 13'7" x 21'2"
Area: 290 sq. ft
Counted as living area: No

Heated: No
Finished: No
Enclosed: No
Contiguous: Yes
Permitted: Yes
Wet space: No
Addition: No
Conversion: No

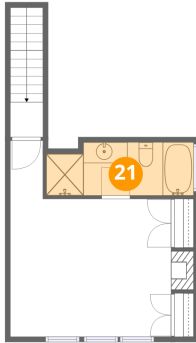
20 Floor 3 - Primary Bedroom



Dimensions: 15'5" x 18'9"
Area: 228 sq. ft
Counted as living area: Yes

Heated: Yes
Finished: Yes
Enclosed: Yes
Contiguous: Yes
Permitted: Yes
Wet space: No
Addition: No
Conversion: No

21 Floor 3 - Bath



Dimensions: 14'1" x 5'1"
Area: 68 sq. ft
Counted as living area: Yes

Heated: Yes
Finished: Yes
Enclosed: Yes
Contiguous: Yes
Permitted: Yes
Wet space: Yes
Addition: No
Conversion: No