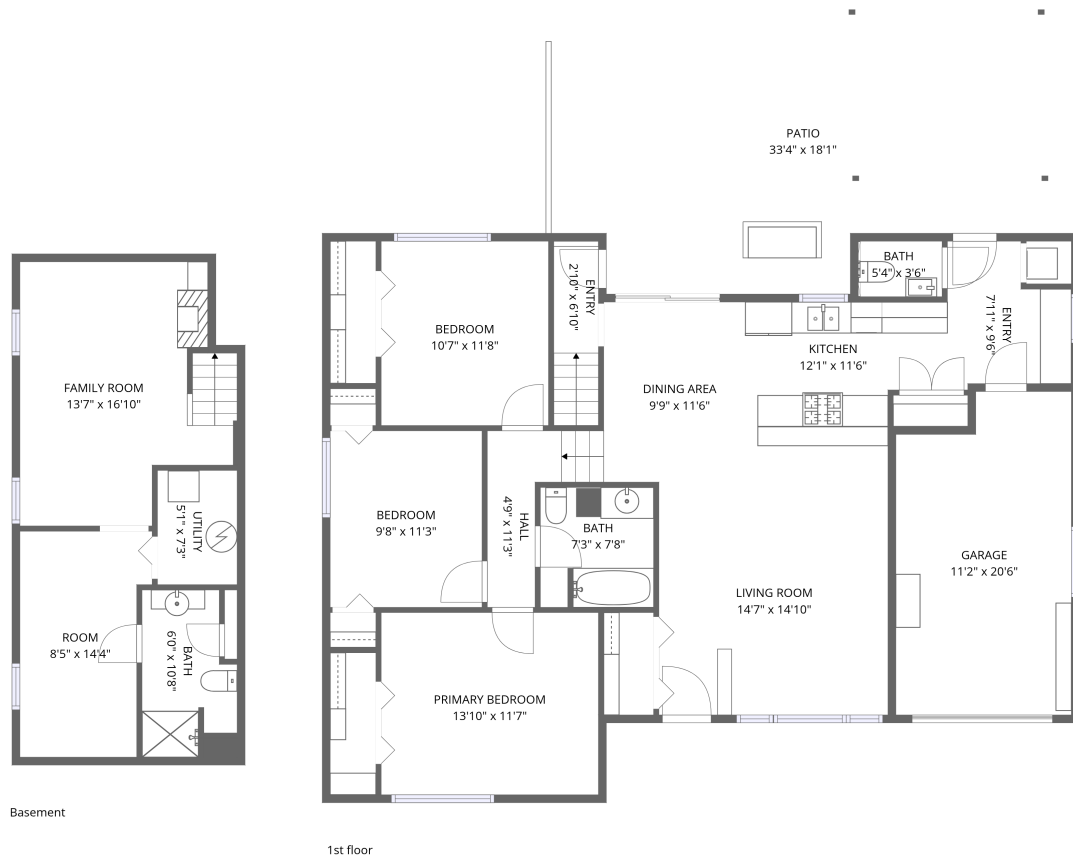


Home data report

712 Arthur Dr, Lombard, IL, US



Total Area: 1600 sq. ft

Basement: 385 sq. ft, 1st Floor: 1215 sq. ft

Excluded: Utility 37 sq. ft, Undefined 4 sq. ft, Garage 216 sq. ft, Patio 535 sq. ft, Walls: 150 sq. ft

Property summary

 **2** Floors

 **3** Bedrooms

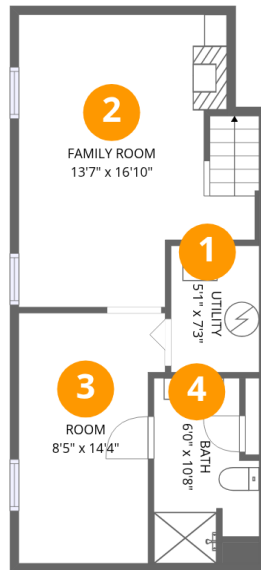
 **2** Bathrooms

Home data report

712 Arthur Dr,Lombard,IL,US

 **1**
Half baths

 **1**
Garages



Room dimensions

Floor 1 Below grade

Total:385sqft Excluded: 41sqft

| # | | Dimensions | sqft | Counted as living area |
|---|-------------|----------------|------------|------------------------|
| 1 | Utility | 5'1" x 7'3" | 37 sq. ft | No |
| 2 | Family Room | 13'7" x 16'10" | 200 sq. ft | Yes |
| 3 | Room | 8'5" x 14'4" | 110 sq. ft | Yes |
| 4 | Bath | 6'0" x 10'8" | 55 sq. ft | Yes |



Room dimensions

Floor 2

Total:1215sqft Excluded: 751sqft

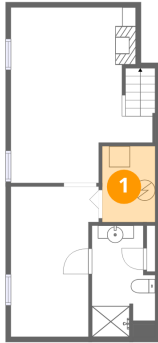
| # | | Dimensions | sqft | Counted as living area |
|----|-----------------|----------------|------------|------------------------|
| 5 | Living Room | 14'7" x 14'10" | 216 sq. ft | Yes |
| 6 | Bath | 7'3" x 7'8" | 54 sq. ft | Yes |
| 7 | Garage | 11'2" x 20'6" | 216 sq. ft | No |
| 8 | Bath | 5'4" x 3'6" | 19 sq. ft | Yes |
| 9 | Kitchen | 12'1" x 11'6" | 116 sq. ft | Yes |
| 10 | Patio | 33'4" x 18'1" | 535 sq. ft | No |
| 11 | Entry | 7'11" x 9'6" | 62 sq. ft | Yes |
| 12 | Dining Area | 9'9" x 11'6" | 113 sq. ft | Yes |
| 13 | Primary Bedroom | 13'10" x 11'7" | 161 sq. ft | Yes |
| 14 | Hall | 4'9" x 11'3" | 49 sq. ft | Yes |
| 15 | Entry | 2'10" x 6'10" | 33 sq. ft | Yes |

Home data report

712 Arthur Dr,Lombard,IL,US

| # | | Dimensions | sqft | Counted as living area |
|----|---------|---------------|------------|------------------------|
| 16 | Bedroom | 10'7" x 11'8" | 125 sq. ft | Yes |
| 17 | Bedroom | 9'8" x 11'3" | 109 sq. ft | Yes |

1 Floor 1 - Utility



Dimensions: 5'1" x 7'3"
Area: 37 sq. ft
Counted as living area: No

Heated: Yes
Finished: No
Enclosed: Yes
Contiguous: Yes
Permitted: Yes
Wet space: No
Addition: No
Conversion: No

2 Floor 1 - Family Room



Dimensions: 13'7" x 16'10"
Area: 200 sq. ft
Counted as living area: Yes

Heated: Yes
Finished: Yes
Enclosed: Yes
Contiguous: Yes
Permitted: Yes
Wet space: No
Addition: No
Conversion: No

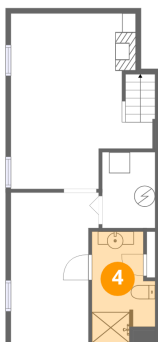
3 Floor 1 - Room



Dimensions: 8'5" x 14'4"
Area: 110 sq. ft
Counted as living area: Yes

Heated: Yes
Finished: Yes
Enclosed: Yes
Contiguous: Yes
Permitted: Yes
Wet space: No
Addition: No
Conversion: No

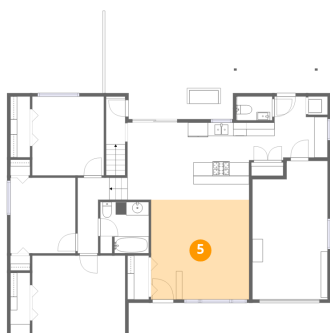
4 Floor 1 - Bath



Dimensions: 6'0" x 10'8"
Area: 55 sq. ft
Counted as living area: Yes

Heated: Yes
Finished: Yes
Enclosed: Yes
Contiguous: Yes
Permitted: Yes
Wet space: Yes
Addition: No
Conversion: No

5 Floor 2 - Living Room



Dimensions: 14'7" x 14'10"
Area: 216 sq. ft
Counted as living area: Yes

Heated: Yes
Finished: Yes
Enclosed: Yes
Contiguous: Yes
Permitted: Yes
Wet space: No
Addition: No
Conversion: No

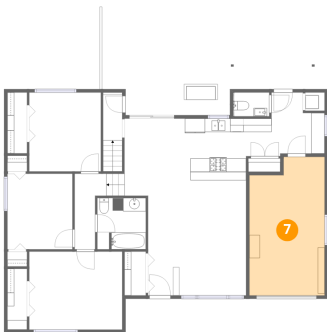
6 Floor 2 - Bath



Dimensions: 7'3" x 7'8"
Area: 54 sq. ft
Counted as living area: Yes

Heated: Yes
Finished: Yes
Enclosed: Yes
Contiguous: Yes
Permitted: Yes
Wet space: Yes
Addition: No
Conversion: No

7 Floor 2 - Garage



Dimensions: 11'2" x 20'6"
Area: 216 sq. ft
Counted as living area: No

Heated: No
Finished: No
Enclosed: Yes
Contiguous: Yes
Permitted: Yes
Wet space: No
Addition: No
Conversion: No

8 Floor 2 - Bath



Dimensions: 5'4" x 3'6"
Area: 19 sq. ft
Counted as living area: Yes

Heated: Yes
Finished: Yes
Enclosed: Yes
Contiguous: Yes
Permitted: Yes
Wet space: Yes
Addition: No
Conversion: No

9 Floor 2 - Kitchen



Dimensions: 12'1" x 11'6"
Area: 116 sq. ft
Counted as living area: Yes

Heated: Yes
Finished: Yes
Enclosed: Yes
Contiguous: Yes
Permitted: Yes
Wet space: No
Addition: No
Conversion: No

10 Floor 2 - Patio



Dimensions: 33'4" x 18'1"
Area: 535 sq. ft
Counted as living area: No

Heated: No
Finished: No
Enclosed: No
Contiguous: Yes
Permitted: Yes
Wet space: No
Addition: No
Conversion: No

11 Floor 2 - Entry



Dimensions: 7'11" x 9'6"
Area: 62 sq. ft
Counted as living area: Yes

Heated: Yes
Finished: Yes
Enclosed: Yes
Contiguous: Yes
Permitted: Yes
Wet space: No
Addition: No
Conversion: No

12 Floor 2 - Dining Area



Dimensions: 9'9" x 11'6"
Area: 113 sq. ft
Counted as living area: Yes

Heated: Yes
Finished: Yes
Enclosed: Yes
Contiguous: Yes
Permitted: Yes
Wet space: No
Addition: No
Conversion: No

13 Floor 2 - Primary Bedroom



Dimensions: 13'10" x 11'7"
Area: 161 sq. ft
Counted as living area: Yes

Heated: Yes
Finished: Yes
Enclosed: Yes
Contiguous: Yes
Permitted: Yes
Wet space: No
Addition: No
Conversion: No

14 Floor 2 - Hall



Dimensions: 4'9" x 11'3"
Area: 49 sq. ft
Counted as living area: Yes

Heated: Yes
Finished: Yes
Enclosed: Yes
Contiguous: Yes
Permitted: Yes
Wet space: No
Addition: No
Conversion: No

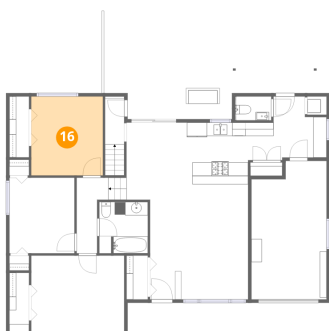
15 Floor 2 - Entry



Dimensions: 2'10" x 6'10"
Area: 33 sq. ft
Counted as living area: Yes

Heated: Yes
Finished: Yes
Enclosed: Yes
Contiguous: Yes
Permitted: Yes
Wet space: No
Addition: No
Conversion: No

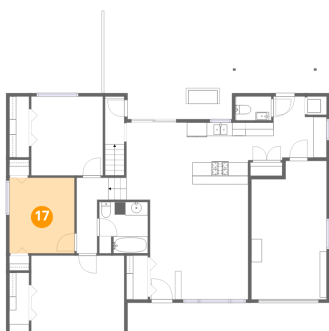
16 Floor 2 - Bedroom



Dimensions: 10'7" x 11'8"
Area: 125 sq. ft
Counted as living area: Yes

Heated: Yes
Finished: Yes
Enclosed: Yes
Contiguous: Yes
Permitted: Yes
Wet space: No
Addition: No
Conversion: No

17 Floor 2 - Bedroom



Dimensions: 9'8" x 11'3"
Area: 109 sq. ft
Counted as living area: Yes

Heated: Yes
Finished: Yes
Enclosed: Yes
Contiguous: Yes
Permitted: Yes
Wet space: No
Addition: No
Conversion: No