

Home data report

3162 29th Street, Boulder, Colorado 80301, United States




Total Area: 1800 sq. ft

Basement: 419 sq. ft, 1st Floor: 690 sq. ft, 2nd Floor: 691 sq. ft

Excluded: Storage 238 sq. ft, Patio 206 sq. ft, Deck 127 sq. ft, Walls: 115 sq. ft

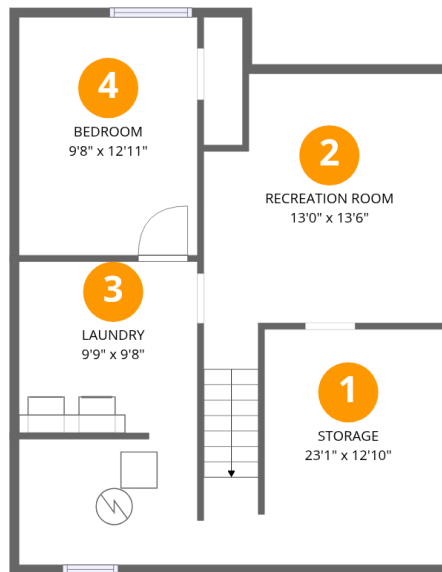
Property summary

 **3** Floors

 **4** Bedrooms

 **2** Bathrooms

 **1** Half baths



Room dimensions

Floor 1 Below grade

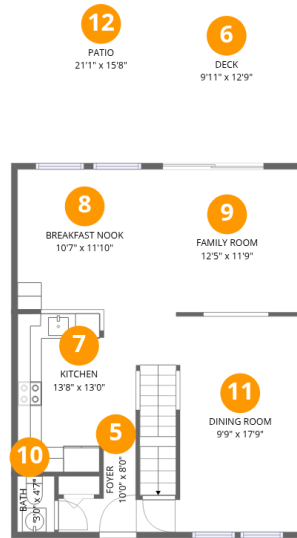
Total:419sqft

Excluded: 238sqft

| # | | Dimensions | sqft | Counted as living area |
|---|-----------------|----------------|------------|------------------------|
| 1 | Storage | 23'1" x 12'10" | 296 sq. ft | No |
| 2 | Recreation Room | 13'0" x 13'6" | 176 sq. ft | Yes |
| 3 | Laundry | 9'9" x 9'8" | 94 sq. ft | Yes |
| 4 | Bedroom | 9'8" x 12'11" | 125 sq. ft | Yes |

Home data report

3162 29th Street, Boulder, Colorado 80301, United States



Room dimensions

Floor 2

Total:690sqft

Excluded: 333sqft

| # | | Dimensions | sqft | Counted as living area |
|----|----------------|----------------|------------|------------------------|
| 5 | Foyer | 10'0" x 8'0" | 80 sq. ft | Yes |
| 6 | Deck | 9'11" x 12'9" | 126 sq. ft | No |
| 7 | Kitchen | 13'8" x 13'0" | 177 sq. ft | Yes |
| 8 | Breakfast Nook | 10'7" x 11'10" | 126 sq. ft | Yes |
| 9 | Family Room | 12'5" x 11'9" | 147 sq. ft | Yes |
| 10 | Bath | 3'0" x 4'7" | 14 sq. ft | Yes |
| 11 | Dining Room | 9'9" x 17'9" | 173 sq. ft | Yes |
| 12 | Patio | 21'1" x 15'8" | 330 sq. ft | No |



Room dimensions

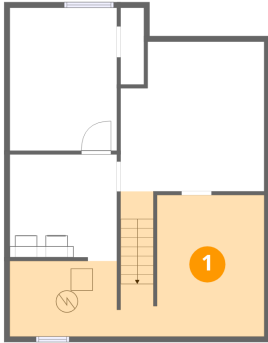
Floor 3

Total:691sqft

Excluded: 0sqft

| # | | Dimensions | sqft | Counted as living area |
|----|-----------------|---------------|------------|------------------------|
| 13 | Bath | 6'9" x 12'5" | 84 sq. ft | Yes |
| 14 | Primary Bedroom | 13'1" x 12'2" | 159 sq. ft | Yes |
| 15 | Bedroom | 9'9" x 16'0" | 156 sq. ft | Yes |
| 16 | Bath | 6'9" x 4'7" | 31 sq. ft | Yes |
| 17 | Bedroom | 9'9" x 11'3" | 110 sq. ft | Yes |
| 18 | Hall | 6'0" x 17'4" | 104 sq. ft | Yes |

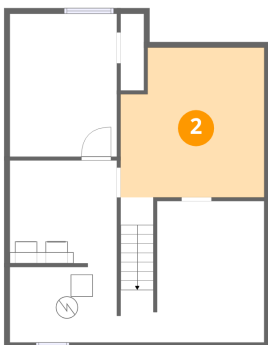
1 Floor 1 - Storage



Dimensions: 23'1" x 12'10"
Area: 296 sq. ft
Counted as living area: No

Heated: No
Finished: No
Enclosed: No
Contiguous: No
Permitted: Yes
Wet space: No
Addition: No
Conversion: No

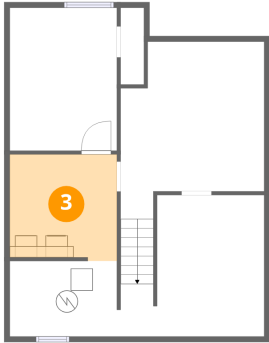
2 Floor 1 - Recreation Room



Dimensions: 13'0" x 13'6"
Area: 176 sq. ft
Counted as living area: Yes

Heated: Yes
Finished: Yes
Enclosed: Yes
Contiguous: Yes
Permitted: Yes
Wet space: No
Addition: No
Conversion: No

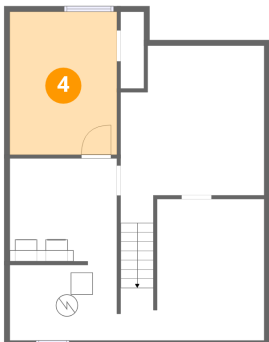
3 Floor 1 - Laundry



Dimensions: 9'9" x 9'8"
Area: 94 sq. ft
Counted as living area: Yes

Heated: Yes
Finished: Yes
Enclosed: Yes
Contiguous: Yes
Permitted: Yes
Wet space: No
Addition: No
Conversion: No

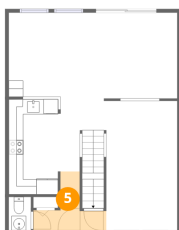
4 Floor 1 - Bedroom



Dimensions: 9'8" x 12'11"
Area: 125 sq. ft
Counted as living area: Yes

Heated: Yes
Finished: Yes
Enclosed: Yes
Contiguous: Yes
Permitted: Yes
Wet space: No
Addition: No
Conversion: No

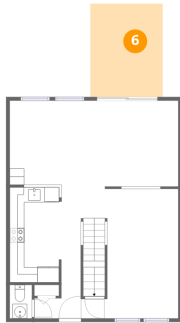
5 Floor 2 - Foyer



Dimensions: 10'0" x 8'0"
Area: 80 sq. ft
Counted as living area: Yes

Heated: Yes
Finished: Yes
Enclosed: Yes
Contiguous: Yes
Permitted: Yes
Wet space: No
Addition: No
Conversion: No

6 Floor 2 - Deck



Dimensions: 9'11" x 12'9"
Area: 126 sq. ft
Counted as living area: No

Heated: No
Finished: No
Enclosed: No
Contiguous: Yes
Permitted: Yes
Wet space: No
Addition: No
Conversion: No

7 Floor 2 - Kitchen



Dimensions: 13'8" x 13'0"
Area: 177 sq. ft
Counted as living area: Yes

Heated: Yes
Finished: Yes
Enclosed: Yes
Contiguous: Yes
Permitted: Yes
Wet space: No
Addition: No
Conversion: No

8 Floor 2 - Breakfast Nook



Dimensions: 10'7" x 11'10"
Area: 126 sq. ft
Counted as living area: Yes

Heated: Yes
Finished: Yes
Enclosed: Yes
Contiguous: Yes
Permitted: Yes
Wet space: No
Addition: No
Conversion: No

9 Floor 2 - Family Room



Dimensions: 12'5" x 11'9"
Area: 147 sq. ft
Counted as living area: Yes

Heated: Yes
Finished: Yes
Enclosed: Yes
Contiguous: Yes
Permitted: Yes
Wet space: No
Addition: No
Conversion: No

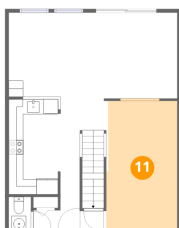
10 Floor 2 - Bath



Dimensions: 3'0" x 4'7"
Area: 14 sq. ft
Counted as living area: Yes

Heated: Yes
Finished: Yes
Enclosed: Yes
Contiguous: Yes
Permitted: Yes
Wet space: Yes
Addition: No
Conversion: No

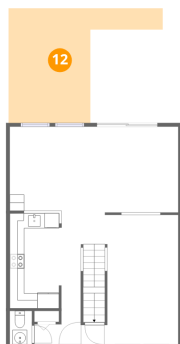
11 Floor 2 - Dining Room



Dimensions: 9'9" x 17'9"
Area: 173 sq. ft
Counted as living area: Yes

Heated: Yes
Finished: Yes
Enclosed: Yes
Contiguous: Yes
Permitted: Yes
Wet space: No
Addition: No
Conversion: No

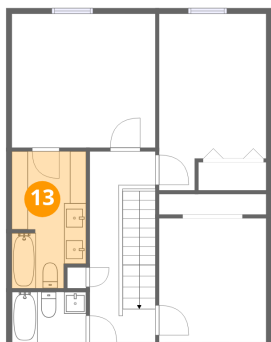
12 Floor 2 - Patio



Dimensions: 21'1" x 15'8"
Area: 330 sq. ft
Counted as living area: No

Heated: No
Finished: No
Enclosed: No
Contiguous: Yes
Permitted: Yes
Wet space: No
Addition: No
Conversion: No

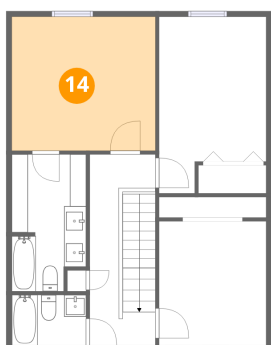
13 Floor 3 - Bath



Dimensions: 6'9" x 12'5"
Area: 84 sq. ft
Counted as living area: Yes

Heated: Yes
Finished: Yes
Enclosed: Yes
Contiguous: Yes
Permitted: Yes
Wet space: Yes
Addition: No
Conversion: No

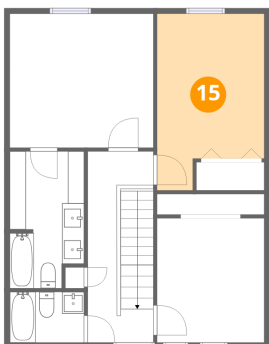
14 Floor 3 - Primary Bedroom



Dimensions: 13'1" x 12'2"
Area: 159 sq. ft
Counted as living area: Yes

Heated: Yes
Finished: Yes
Enclosed: Yes
Contiguous: Yes
Permitted: Yes
Wet space: No
Addition: No
Conversion: No

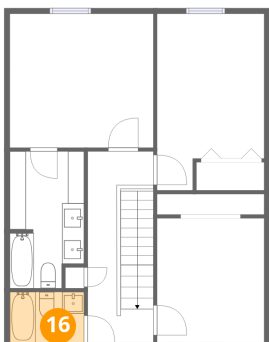
15 Floor 3 - Bedroom



Dimensions: 9'9" x 16'0"
Area: 156 sq. ft
Counted as living area: Yes

Heated: Yes
Finished: Yes
Enclosed: Yes
Contiguous: Yes
Permitted: Yes
Wet space: No
Addition: No
Conversion: No

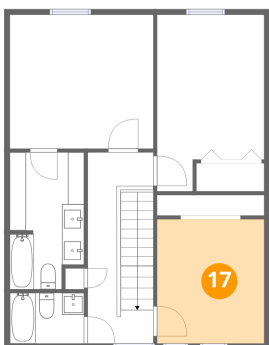
16 Floor 3 - Bath



Dimensions: 6'9" x 4'7"
Area: 31 sq. ft
Counted as living area: Yes

Heated: Yes
Finished: Yes
Enclosed: Yes
Contiguous: Yes
Permitted: Yes
Wet space: Yes
Addition: No
Conversion: No

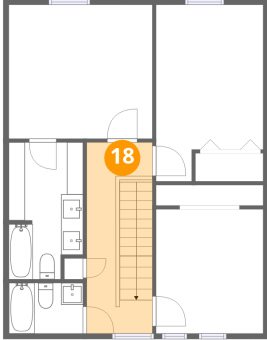
17 Floor 3 - Bedroom



Dimensions: 9'9" x 11'3"
Area: 110 sq. ft
Counted as living area: Yes

Heated: Yes
Finished: Yes
Enclosed: Yes
Contiguous: Yes
Permitted: Yes
Wet space: No
Addition: No
Conversion: No

18 Floor 3 - Hall



Dimensions: 6'0" x 17'4"
Area: 104 sq. ft
Counted as living area: Yes

Heated: Yes
Finished: Yes
Enclosed: Yes
Contiguous: Yes
Permitted: Yes
Wet space: No
Addition: No
Conversion: No