

Home data report

1677 Kingsmill Drive, Woodbridge, Salem, Roanoke County, Virginia, United States, 24153



Total Area: 2073 sq. ft

1st Floor: 2073 sq. ft

Excluded: Screened porch 237 sq. ft, Porch 209 sq. ft, Covered patio 147 sq. ft, Garage 563 sq. ft, Fireplace 13 sq. ft, Walls: 165 sq. ft

Property summary



1 Floors



3 Bedrooms



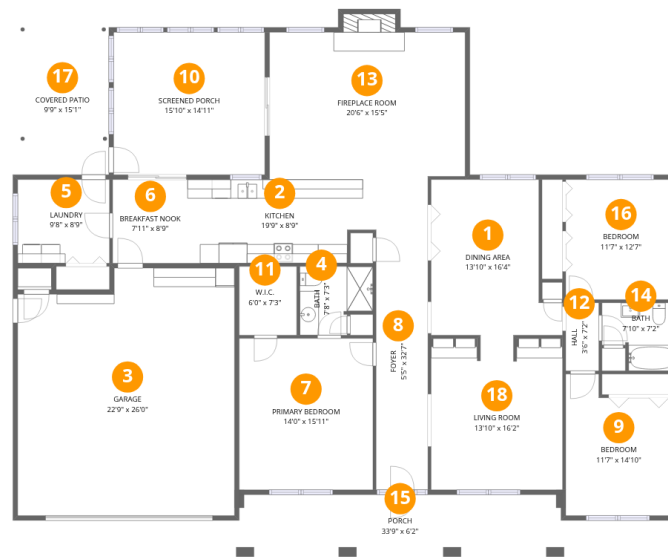
2 Bathrooms



1 Garages

Home data report

1677 Kingsmill Drive, Woodbridge, Salem, Roanoke County, Virginia, United States, 24153



Room dimensions

Floor 1

Total:2073sqft

Excluded: 1169sqft

#		Dimensions	sqft	Counted as living area
1	Dining Area	13'10" x 16'4"	193 sq. ft	Yes
2	Kitchen	19'9" x 8'9"	163 sq. ft	Yes
3	Garage	22'9" x 26'0"	563 sq. ft	No
4	Bath	7'8" x 7'3"	48 sq. ft	Yes
5	Laundry	9'8" x 8'9"	85 sq. ft	Yes
6	Breakfast Nook	7'11" x 8'9"	69 sq. ft	Yes
7	Primary Bedroom	14'0" x 15'11"	223 sq. ft	Yes
8	Foyer	5'5" x 32'7"	177 sq. ft	Yes
9	Bedroom	11'7" x 14'10"	152 sq. ft	Yes
10	Screened Porch	15'10" x 14'11"	237 sq. ft	No
11	W.I.C.	6'0" x 7'3"	44 sq. ft	Yes

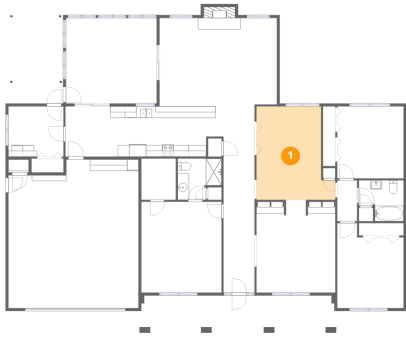
Home data report

**1677 Kingsmill Drive, Woodbridge, Salem, Roanoke County,
Virginia, United States, 24153**

#		Dimensions	sqft	Counted as living area
12	Hall	3'6" x 7'2"	25 sq. ft	Yes
13	Fireplace Room	20'6" x 15'5"	327 sq. ft	Yes
14	Bath	7'10" x 7'2"	48 sq. ft	Yes
15	Porch	33'9" x 6'2"	209 sq. ft	No
16	Bedroom	11'7" x 12'7"	146 sq. ft	Yes
17	Covered Patio	9'9" x 15'1"	147 sq. ft	No
18	Living Room	13'10" x 16'2"	219 sq. ft	Yes

1677 Kingsmill Drive, Woodbridge, Salem, Roanoke County,
Virginia, United States, 24153

1 Floor 1 - Dining Area



Dimensions: 13'10" x 16'4"
Area: 193 sq. ft
Counted as living area: Yes

Heated: Yes
Finished: Yes
Enclosed: Yes
Contiguous: Yes
Permitted: Yes
Wet space: No
Addition: No
Conversion: No

2 Floor 1 - Kitchen



Dimensions: 19'9" x 8'9"
Area: 163 sq. ft
Counted as living area: Yes

Heated: Yes
Finished: Yes
Enclosed: Yes
Contiguous: Yes
Permitted: Yes
Wet space: No
Addition: No
Conversion: No

1677 Kingsmill Drive, Woodbridge, Salem, Roanoke County,
Virginia, United States, 24153

3 Floor 1 - Garage



Dimensions: 22'9" x 26'0"
Area: 563 sq. ft
Counted as living area: No

Heated: No
Finished: No
Enclosed: Yes
Contiguous: Yes
Permitted: Yes
Wet space: No
Addition: No
Conversion: No

4 Floor 1 - Bath



Dimensions: 7'8" x 7'3"
Area: 48 sq. ft
Counted as living area: Yes

Heated: Yes
Finished: Yes
Enclosed: Yes
Contiguous: Yes
Permitted: Yes
Wet space: Yes
Addition: No
Conversion: No

5 Floor 1 - Laundry



Dimensions: 9'8" x 8'9"
Area: 85 sq. ft
Counted as living area: Yes

Heated: Yes
Finished: Yes
Enclosed: Yes
Contiguous: Yes
Permitted: Yes
Wet space: No
Addition: No
Conversion: No

6 Floor 1 - Breakfast Nook



Dimensions: 7'11" x 8'9"
Area: 69 sq. ft
Counted as living area: Yes

Heated: Yes
Finished: Yes
Enclosed: Yes
Contiguous: Yes
Permitted: Yes
Wet space: No
Addition: No
Conversion: No

7 Floor 1 - Primary Bedroom



Dimensions: 14'0" x 15'11"
Area: 223 sq. ft
Counted as living area: Yes

Heated: Yes
Finished: Yes
Enclosed: Yes
Contiguous: Yes
Permitted: Yes
Wet space: No
Addition: No
Conversion: No

8 Floor 1 - Foyer



Dimensions: 5'5" x 32'7"
Area: 177 sq. ft
Counted as living area: Yes

Heated: Yes
Finished: Yes
Enclosed: Yes
Contiguous: Yes
Permitted: Yes
Wet space: No
Addition: No
Conversion: No

1677 Kingsmill Drive, Woodbridge, Salem, Roanoke County,
Virginia, United States, 24153

9 Floor 1 - Bedroom



Dimensions: 11'7" x 14'10"
Area: 152 sq. ft
Counted as living area: Yes

Heated: Yes
Finished: Yes
Enclosed: Yes
Contiguous: Yes
Permitted: Yes
Wet space: No
Addition: No
Conversion: No

10 Floor 1 - Screened Porch



Dimensions: 15'10" x 14'11"
Area: 237 sq. ft
Counted as living area: No

Heated: No
Finished: No
Enclosed: No
Contiguous: Yes
Permitted: Yes
Wet space: No
Addition: No
Conversion: No

11 Floor 1 - W.I.C.



Dimensions: 6'0" x 7'3"
Area: 44 sq. ft
Counted as living area: Yes

Heated: Yes
Finished: Yes
Enclosed: Yes
Contiguous: Yes
Permitted: Yes
Wet space: No
Addition: No
Conversion: No

12 Floor 1 - Hall



Dimensions: 3'6" x 7'2"
Area: 25 sq. ft
Counted as living area: Yes

Heated: Yes
Finished: Yes
Enclosed: Yes
Contiguous: Yes
Permitted: Yes
Wet space: No
Addition: No
Conversion: No

13 Floor 1 - Fireplace Room



Dimensions: 20'6" x 15'5"
Area: 327 sq. ft
Counted as living area: Yes

Heated: Yes
Finished: Yes
Enclosed: Yes
Contiguous: Yes
Permitted: Yes
Wet space: No
Addition: No
Conversion: No

14 Floor 1 - Bath



Dimensions: 7'10" x 7'2"
Area: 48 sq. ft
Counted as living area: Yes

Heated: Yes
Finished: Yes
Enclosed: Yes
Contiguous: Yes
Permitted: Yes
Wet space: Yes
Addition: No
Conversion: No

1677 Kingsmill Drive, Woodbridge, Salem, Roanoke County,
Virginia, United States, 24153

15 Floor 1 - Porch



Dimensions: 33'9" x 6'2"
Area: 209 sq. ft
Counted as living area: No

Heated: No
Finished: No
Enclosed: No
Contiguous: Yes
Permitted: Yes
Wet space: No
Addition: No
Conversion: No

16 Floor 1 - Bedroom



Dimensions: 11'7" x 12'7"
Area: 146 sq. ft
Counted as living area: Yes

Heated: Yes
Finished: Yes
Enclosed: Yes
Contiguous: Yes
Permitted: Yes
Wet space: No
Addition: No
Conversion: No

17 Floor 1 - Covered Patio



Dimensions: 9'9" x 15'1"
Area: 147 sq. ft
Counted as living area: No

Heated: No
Finished: No
Enclosed: No
Contiguous: Yes
Permitted: Yes
Wet space: No
Addition: No
Conversion: No

Home data report

**1677 Kingsmill Drive, Woodbridge, Salem, Roanoke County,
Virginia, United States, 24153**

18 Floor 1 - Living Room



Dimensions: 13'10" x 16'2"
Area: 219 sq. ft
Counted as living area: Yes

Heated: Yes
Finished: Yes
Enclosed: Yes
Contiguous: Yes
Permitted: Yes
Wet space: No
Addition: No
Conversion: No