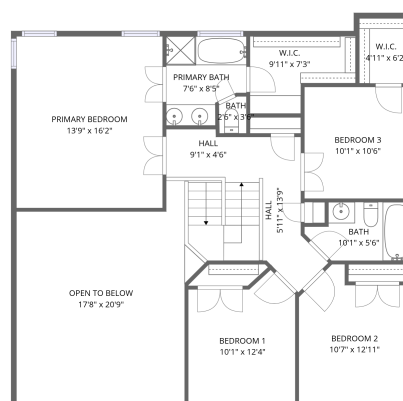
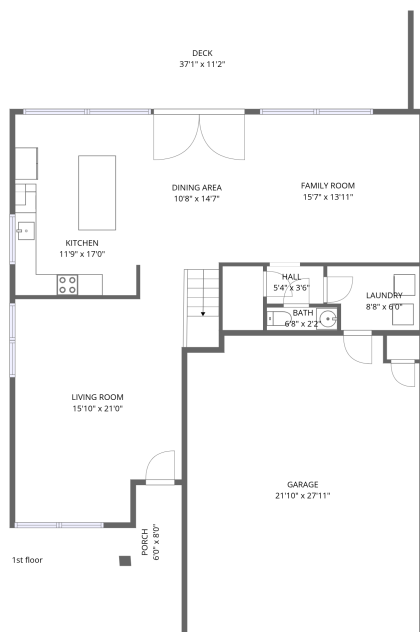
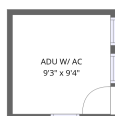


# Home data report

## 8920 West Hove Loop, Austin, Texas 78749, United States



**Total Area: 2034 sq. ft**

1st Floor: 1042 sq. ft, 2nd Floor: 992 sq. ft

Excluded: Garage 603 sq. ft, ADU W/ ac 86 sq. ft, Porch 42 sq. ft, Deck 368 sq. ft, Open to below 291 sq. ft, Walls: 208 sq. ft

### Property summary



Home data report

**8920 West Hove Loop, Austin, Texas 78749, United States**



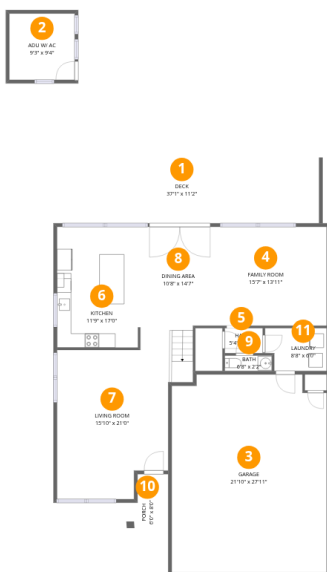
**1**  
Half baths



**1**  
Garages

# Home data report

## 8920 West Hove Loop, Austin, Texas 78749, United States



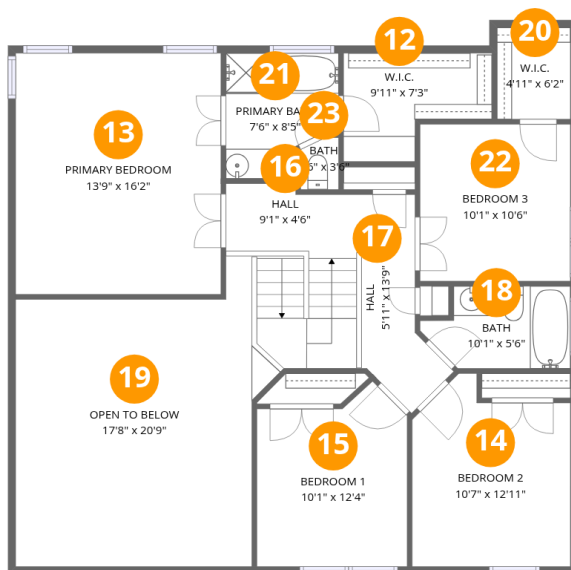
### Room dimensions

Floor 1

Total:1042sqft

Excluded: 1099sqft

#		Dimensions	sqft	Counted as living area
1	Deck	37'1" x 11'2"	412 sq. ft	No
2	ADU W/ Ac	9'3" x 9'4"	86 sq. ft	No
3	Garage	21'10" x 27'11"	610 sq. ft	No
4	Family Room	15'7" x 13'11"	217 sq. ft	Yes
5	Hall	5'4" x 3'6"	19 sq. ft	Yes
6	Kitchen	11'9" x 17'0"	200 sq. ft	Yes
7	Living Room	15'10" x 21'0"	332 sq. ft	Yes
8	Dining Area	10'8" x 14'7"	156 sq. ft	Yes
9	Bath	6'8" x 2'2"	14 sq. ft	Yes
10	Porch	6'0" x 8'0"	49 sq. ft	No
11	Laundry	8'8" x 6'0"	52 sq. ft	Yes



## Room dimensions

Floor 2

Total:992sqft

Excluded: 291sqft

#		Dimensions	sqft	Counted as living area
12	W.I.C.	9'11" x 7'3"	72 sq. ft	Yes
13	Primary Bedroom	13'9" x 16'2"	222 sq. ft	Yes
14	Bedroom 2	10'7" x 12'11"	137 sq. ft	Yes
15	Bedroom 1	10'1" x 12'4"	124 sq. ft	Yes
16	Hall	9'1" x 4'6"	41 sq. ft	Yes
17	Hall	5'11" x 13'9"	81 sq. ft	Yes
18	Bath	10'1" x 5'6"	55 sq. ft	Yes
19	Open To Below	17'8" x 20'9"	367 sq. ft	No
20	W.I.C.	4'11" x 6'2"	30 sq. ft	Yes
21	Primary Bath	7'6" x 8'5"	63 sq. ft	Yes
22	Bedroom 3	10'1" x 10'6"	106 sq. ft	Yes

Home data report

## 8920 West Hove Loop, Austin, Texas 78749, United States

#		Dimensions	sqft	Counted as living area
23	Bath	2'6" x 3'6"	9 sq. ft	Yes

## 1 Floor 1 - Deck



Dimensions: 37'1" x 11'2"  
Area: 412 sq. ft  
Counted as living area: No

Heated: No  
Finished: No  
Enclosed: No  
Contiguous: Yes  
Permitted: Yes  
Wet space: No  
Addition: No  
Conversion: No

## 2 Floor 1 - ADU W/ Ac



Dimensions: 9'3" x 9'4"  
Area: 86 sq. ft  
Counted as living area: No

Heated: No  
Finished: No  
Enclosed: No  
Contiguous: Yes  
Permitted: Yes  
Wet space: No  
Addition: No  
Conversion: No

### 3 Floor 1 - Garage



Dimensions: 21'10" x 27'11"

Area: 610 sq. ft

Counted as living area: No

Heated: No

Finished: No

Enclosed: Yes

Contiguous: Yes

Permitted: Yes

Wet space: No

Addition: No

Conversion: No

### 4 Floor 1 - Family Room



Dimensions: 15'7" x 13'11"

Area: 217 sq. ft

Counted as living area: Yes

Heated: Yes

Finished: Yes

Enclosed: Yes

Contiguous: Yes

Permitted: Yes

Wet space: No

Addition: No

Conversion: No

### 5 Floor 1 - Hall



Dimensions: 5'4" x 3'6"

Area: 19 sq. ft

Counted as living area: Yes

Heated: Yes

Finished: Yes

Enclosed: Yes

Contiguous: Yes

Permitted: Yes

Wet space: No

Addition: No

Conversion: No

## 6 Floor 1 - Kitchen



Dimensions: 11'9" x 17'0"  
Area: 200 sq. ft  
Counted as living area: Yes

Heated: Yes  
Finished: Yes  
Enclosed: Yes  
Contiguous: Yes  
Permitted: Yes  
Wet space: No  
Addition: No  
Conversion: No

## 7 Floor 1 - Living Room



Dimensions: 15'10" x 21'0"  
Area: 332 sq. ft  
Counted as living area: Yes

Heated: Yes  
Finished: Yes  
Enclosed: Yes  
Contiguous: Yes  
Permitted: Yes  
Wet space: No  
Addition: No  
Conversion: No

## 8 Floor 1 - Dining Area



Dimensions: 10'8" x 14'7"  
Area: 156 sq. ft  
Counted as living area: Yes

Heated: Yes  
Finished: Yes  
Enclosed: Yes  
Contiguous: Yes  
Permitted: Yes  
Wet space: No  
Addition: No  
Conversion: No

### 9 Floor 1 - Bath



Dimensions: 6'8" x 2'2"  
Area: 14 sq. ft  
Counted as living area: Yes

Heated: Yes  
Finished: Yes  
Enclosed: Yes  
Contiguous: Yes  
Permitted: Yes  
Wet space: No  
Addition: No  
Conversion: No

### 10 Floor 1 - Porch



Dimensions: 6'0" x 8'0"  
Area: 49 sq. ft  
Counted as living area: No

Heated: No  
Finished: No  
Enclosed: No  
Contiguous: Yes  
Permitted: Yes  
Wet space: No  
Addition: No  
Conversion: No

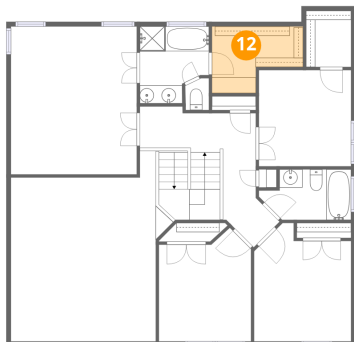
### 11 Floor 1 - Laundry



Dimensions: 8'8" x 6'0"  
Area: 52 sq. ft  
Counted as living area: Yes

Heated: Yes  
Finished: Yes  
Enclosed: Yes  
Contiguous: Yes  
Permitted: Yes  
Wet space: No  
Addition: No  
Conversion: No

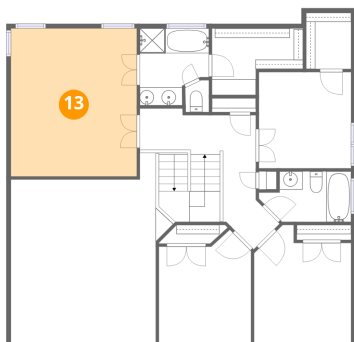
**12** Floor 2 - W.I.C.



Dimensions: 9'11" x 7'3"  
Area: 72 sq. ft  
Counted as living area: Yes

Heated: Yes  
Finished: Yes  
Enclosed: Yes  
Contiguous: Yes  
Permitted: Yes  
Wet space: No  
Addition: No  
Conversion: No

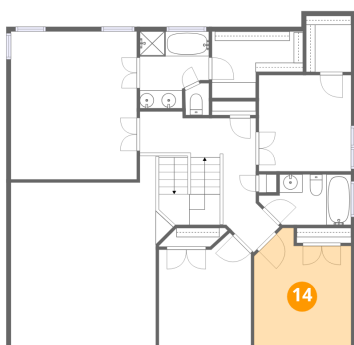
**13** Floor 2 - Primary Bedroom



Dimensions: 13'9" x 16'2"  
Area: 222 sq. ft  
Counted as living area: Yes

Heated: Yes  
Finished: Yes  
Enclosed: Yes  
Contiguous: Yes  
Permitted: Yes  
Wet space: No  
Addition: No  
Conversion: No

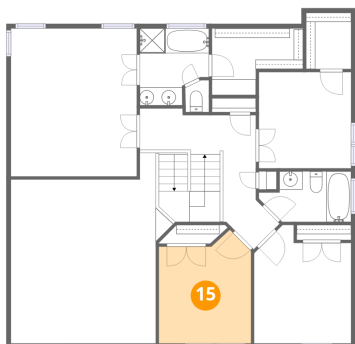
**14** Floor 2 - Bedroom 2



Dimensions: 10'7" x 12'11"  
Area: 137 sq. ft  
Counted as living area: Yes

Heated: Yes  
Finished: Yes  
Enclosed: Yes  
Contiguous: Yes  
Permitted: Yes  
Wet space: No  
Addition: No  
Conversion: No

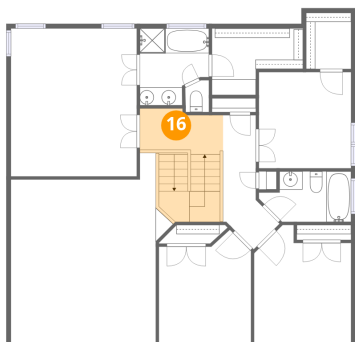
**15** Floor 2 - Bedroom 1



Dimensions: 10'1" x 12'4"  
Area: 124 sq. ft  
Counted as living area: Yes

Heated: Yes  
Finished: Yes  
Enclosed: Yes  
Contiguous: Yes  
Permitted: Yes  
Wet space: No  
Addition: No  
Conversion: No

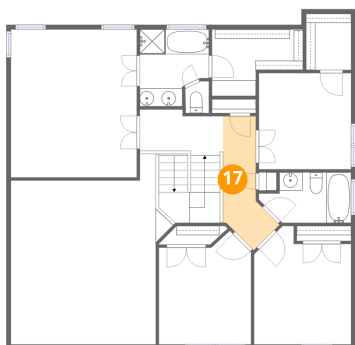
**16** Floor 2 - Hall



Dimensions: 9'1" x 4'6"  
Area: 41 sq. ft  
Counted as living area: Yes

Heated: Yes  
Finished: Yes  
Enclosed: Yes  
Contiguous: Yes  
Permitted: Yes  
Wet space: No  
Addition: No  
Conversion: No

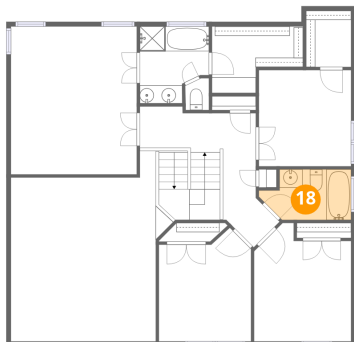
**17** Floor 2 - Hall



Dimensions: 5'11" x 13'9"  
Area: 81 sq. ft  
Counted as living area: Yes

Heated: Yes  
Finished: Yes  
Enclosed: Yes  
Contiguous: Yes  
Permitted: Yes  
Wet space: No  
Addition: No  
Conversion: No

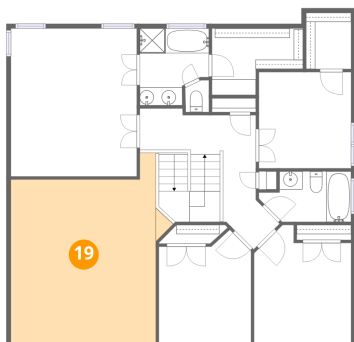
**18** Floor 2 - Bath



Dimensions: 10'1" x 5'6"  
Area: 55 sq. ft  
Counted as living area: Yes

Heated: Yes  
Finished: Yes  
Enclosed: Yes  
Contiguous: Yes  
Permitted: Yes  
Wet space: Yes  
Addition: No  
Conversion: No

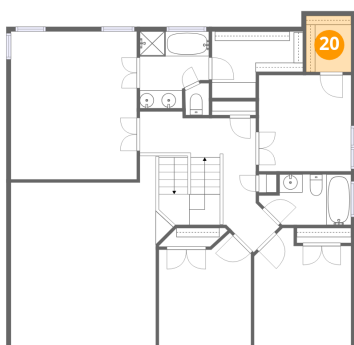
**19** Floor 2 - Open To Below



Dimensions: 17'8" x 20'9"  
Area: 367 sq. ft  
Counted as living area: No

Heated: No  
Finished: No  
Enclosed: No  
Contiguous: Yes  
Permitted: No  
Wet space: No  
Addition: No  
Conversion: No

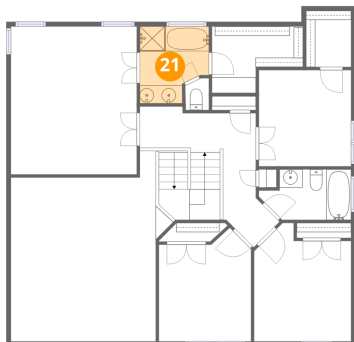
**20** Floor 2 - W.I.C.



Dimensions: 4'11" x 6'2"  
Area: 30 sq. ft  
Counted as living area: Yes

Heated: Yes  
Finished: Yes  
Enclosed: Yes  
Contiguous: Yes  
Permitted: Yes  
Wet space: No  
Addition: No  
Conversion: No

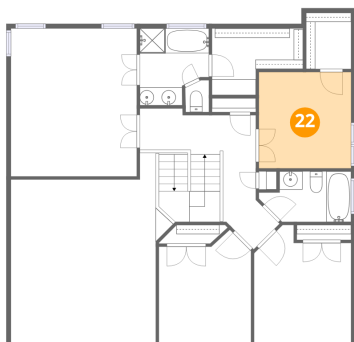
### 21 Floor 2 - Primary Bath



Dimensions: 7'6" x 8'5"  
Area: 63 sq. ft  
Counted as living area: Yes

Heated: Yes  
Finished: Yes  
Enclosed: Yes  
Contiguous: Yes  
Permitted: Yes  
Wet space: Yes  
Addition: No  
Conversion: No

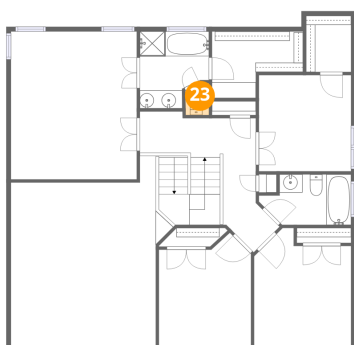
### 22 Floor 2 - Bedroom 3



Dimensions: 10'1" x 10'6"  
Area: 106 sq. ft  
Counted as living area: Yes

Heated: Yes  
Finished: Yes  
Enclosed: Yes  
Contiguous: Yes  
Permitted: Yes  
Wet space: No  
Addition: No  
Conversion: No

### 23 Floor 2 - Bath



Dimensions: 2'6" x 3'6"  
Area: 9 sq. ft  
Counted as living area: Yes

Heated: Yes  
Finished: Yes  
Enclosed: Yes  
Contiguous: Yes  
Permitted: Yes  
Wet space: No  
Addition: No  
Conversion: No