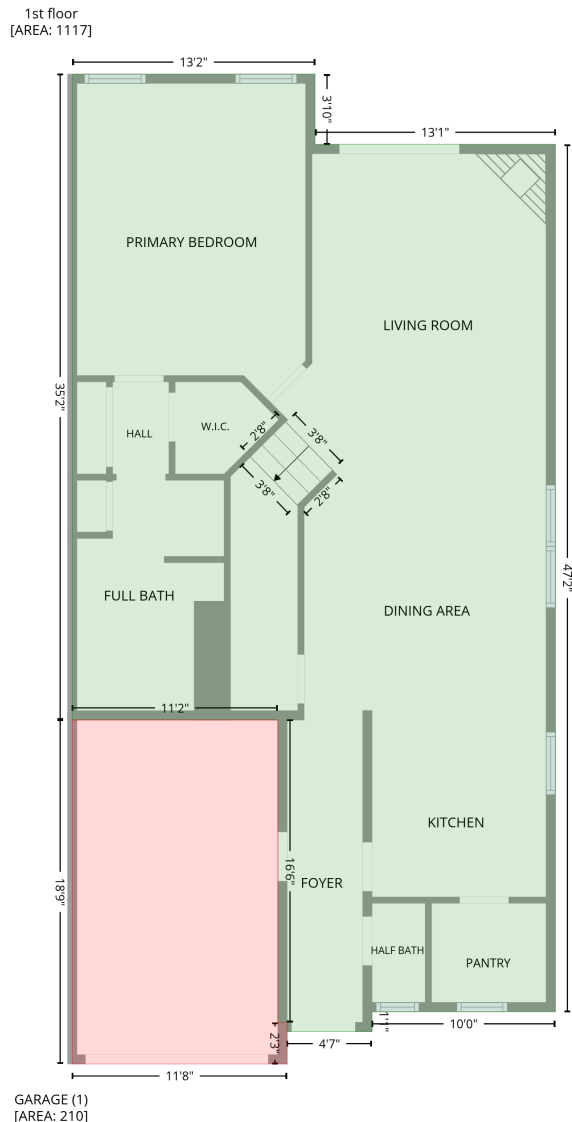


# 220 Beaconwood Lane, Holly Springs, Wake County, North Carolina, United States, 27540

Gross Living Area: 1789 sq. ft

## Level 1



Space	Area (sq. ft)	Calculation
1st floor (Living area)	1117	Coordinate Polygon Area Algorithm using inches $-((218.9 + 218.9) * (-4.8 - 41) + (218.9 + 375.6) * (41 - 41) + (375.6 + 375.6) * (41 - 607.5) + (375.6 + 256.1) * (607.5 - 607.5) + (256.1 + 256.1) * (607.5 - 620.4) + (256.1 + 200.8) * (620.4 - 620.4) + (200.8 + 200.8) * (620.4 - 614.4) + (200.8 + 194.8) * (614.4 - 614.4) + (194.8 + 194.8) * (614.4 - 416.9) + (194.8 + 60.8) * (416.9 - 416.9) + (60.8 + 60.8) * (416.9 - -4.8) + (60.8 + 218.9) * (-4.8 - -4.8)) * 0.5 * 0.00694$

# 220 Beaconwood Lane, Holly Springs, Wake County, North Carolina, United States, 27540

Gross Living Area: 1789 sq. ft

## Level 1

Space	Area (sq. ft)	Calculation <small>Coordinate Polygon Area Algorithm using inches</small>
GARAGE (Non-living area)	210	$-((194.8 + 194.8) * (416.9 - 614.4) + (194.8 + 200.8) * (614.4 - 614.4) + (200.8 + 200.8) * (614.4 - 641.6) + (200.8 + 60.8) * (641.6 - 641.6) + (60.8 + 60.8) * (641.6 - 416.9) + (60.8 + 194.8) * (416.9 - 416.9)) * 0.5 * 0.00694$



# 220 Beaconwood Lane, Holly Springs, Wake County, North Carolina, United States, 27540

Gross Living Area: 1789 sq. ft

## Level 2

Space	Area (sq. ft)	Calculation <small>Coordinate Polygon Area Algorithm using inches</small>
OPEN TO BELOW (Non-living area)	47	$-\left((250.1 + 250.1) * (496.7 - 601.5) + (250.1 + 256.1) * (601.5 - 607.5) + (256.1 + 256.1) * (607.5 - 631.4) + (256.1 + 200.8) * (631.4 - 631.4) + (200.8 + 200.8) * (631.4 - 496.7) + (200.8 + 250.1) * (496.7 - 496.7)\right) * 0.5 * 0.00694$
OPEN TO BELOW (Non-living area)	169	$-\left((375.6 + 375.6) * (215.5 - 372.8) + (375.6 + 211.8) * (372.8 - 372.8) + (211.8 + 211.8) * (372.8 - 277.9) + (211.8 + 233.2) * (277.9 - 256.6) + (233.2 + 230.4) * (256.6 - 253.8) + (230.4 + 199.6) * (253.8 - 222.4) + (199.6 + 369.6) * (222.4 - 221.5) + (369.6 + 375.6) * (221.5 - 215.5)\right) * 0.5 * 0.00694$