

Home data report

242 Forest Avenue, Glen Ridge, Essex County, New Jersey,
United States, 07028



Total Area: 4111 sq. ft

Basement: 907 sq. ft, 1st Floor: 1466 sq. ft, 2nd Floor: 1111 sq. ft, 3rd Floor: 627 sq. ft
Excluded: Storage 145 sq. ft, Utility 65 sq. ft, Porch 118 sq. ft, Deck 372 sq. ft, Fireplace 11 sq. ft, Walls: 313 sq. ft

Property summary



Home data report

242 Forest Avenue, Glen Ridge, Essex County, New Jersey, United States, 07028



Room dimensions

Floor 1 Below grade

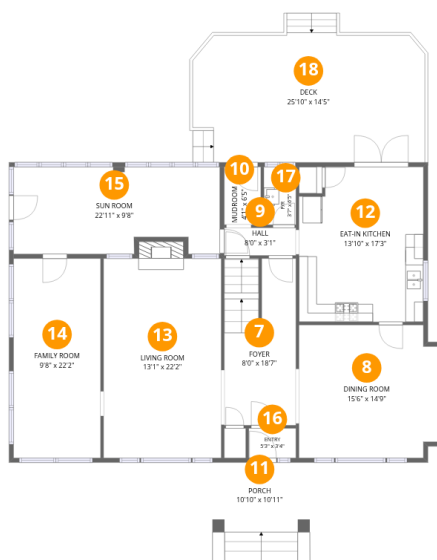
Total:907sqft

Excluded: 210sqft

#		Dimensions	sqft	Counted as living area
1	China Room	9'8" x 7'8"	74 sq. ft	Yes
2	P/R	6'11" x 3'4"	23 sq. ft	Yes
3	Laundry	13'10" x 5'6"	76 sq. ft	Yes
4	Utility	7'8" x 8'6"	65 sq. ft	No
5	Storage	9'8" x 14'8"	142 sq. ft	No
6	Recreation Room	37'3" x 22'8"	703 sq. ft	Yes

Home data report

242 Forest Avenue, Glen Ridge, Essex County, New Jersey, United States, 07028



Room dimensions

Floor 2

Total:1466sqft Excluded: 501sqft

#		Dimensions	sqft	Counted as living area
7	Foyer	8'0" x 18'7"	145 sq. ft	Yes
8	Dining Room	15'6" x 14'9"	222 sq. ft	Yes
9	Hall	8'0" x 3'1"	25 sq. ft	Yes
10	Mudroom	4'1" x 6'5"	26 sq. ft	Yes
11	Porch	10'10" x 10'11"	118 sq. ft	No
12	Eat-in Kitchen	13'10" x 17'3"	229 sq. ft	Yes
13	Living Room	13'1" x 22'2"	299 sq. ft	Yes
14	Family Room	9'8" x 22'2"	214 sq. ft	Yes
15	Sun Room	22'11" x 9'8"	211 sq. ft	Yes
16	Entry	5'3" x 3'4"	17 sq. ft	Yes
17	P/R	3'7" x 6'5"	23 sq. ft	Yes

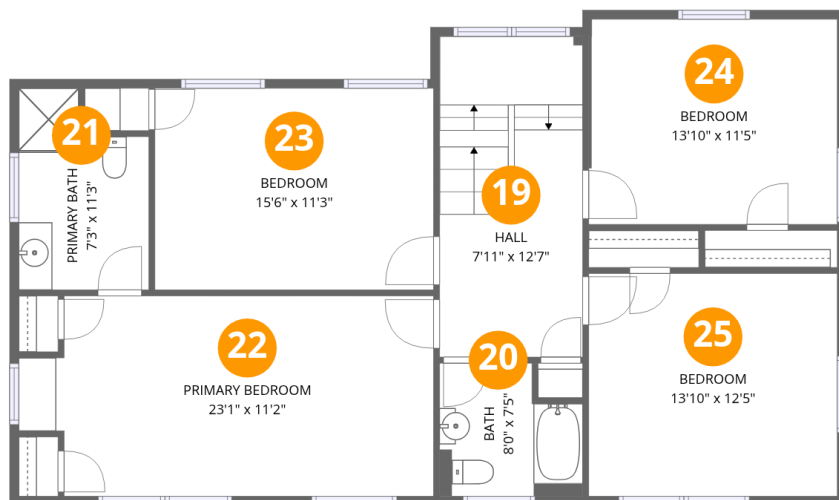
Home data report

**242 Forest Avenue, Glen Ridge, Essex County, New Jersey,
United States, 07028**

#		Dimensions	sqft	Counted as living area
18	Deck	25'10" x 14'5"	372 sq. ft	No

Home data report

242 Forest Avenue, Glen Ridge, Essex County, New Jersey,
United States, 07028



Room dimensions

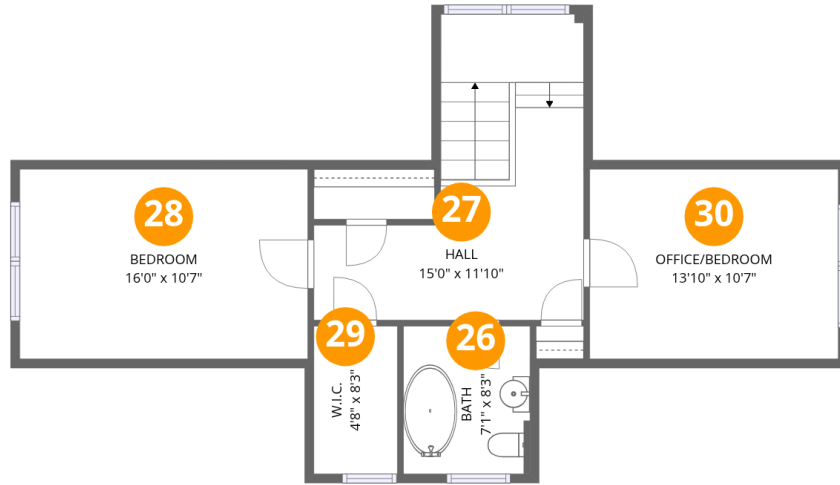
Floor 3

Total:1111sqft Excluded: 0sqft

#		Dimensions	sqft	Counted as living area
19	Hall	7'11" x 12'7"	142 sq. ft	Yes
20	Bath	8'0" x 7'5"	53 sq. ft	Yes
21	Primary Bath	7'3" x 11'3"	70 sq. ft	Yes
22	Primary Bedroom	23'1" x 11'2"	239 sq. ft	Yes
23	Bedroom	15'6" x 11'3"	174 sq. ft	Yes
24	Bedroom	13'10" x 11'5"	158 sq. ft	Yes
25	Bedroom	13'10" x 12'5"	171 sq. ft	Yes

Home data report

242 Forest Avenue, Glen Ridge, Essex County, New Jersey,
United States, 07028



Room dimensions

Floor 4

Total:627sqft Excluded: 0sqft

#		Dimensions	sqft	Counted as living area
26	Bath	7'1" x 8'3"	58 sq. ft	Yes
27	Hall	15'0" x 11'10"	173 sq. ft	Yes
28	Bedroom	16'0" x 10'7"	169 sq. ft	Yes
29	W.I.C.	4'8" x 8'3"	38 sq. ft	Yes
30	Office/Bedroom	13'10" x 10'7"	146 sq. ft	Yes

242 Forest Avenue, Glen Ridge, Essex County, New Jersey,
United States, 07028

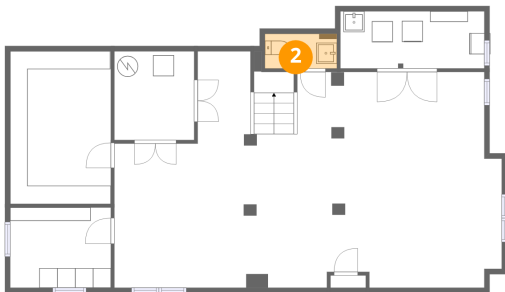
1 Floor 1 - China Room



Dimensions: 9'8" x 7'8"
Area: 74 sq. ft
Counted as living area: Yes

Heated: Yes
Finished: Yes
Enclosed: Yes
Contiguous: Yes
Permitted: Yes
Wet space: No
Addition: No
Conversion: No

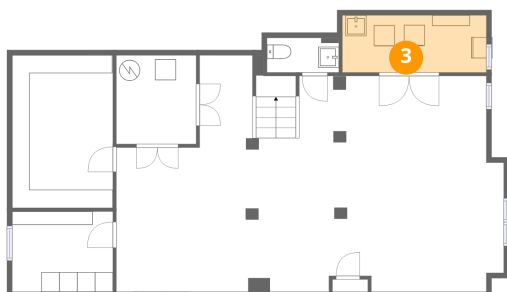
2 Floor 1 - P/R



Dimensions: 6'11" x 3'4"
Area: 23 sq. ft
Counted as living area: Yes

Heated: Yes
Finished: Yes
Enclosed: Yes
Contiguous: Yes
Permitted: Yes
Wet space: Yes
Addition: No
Conversion: No

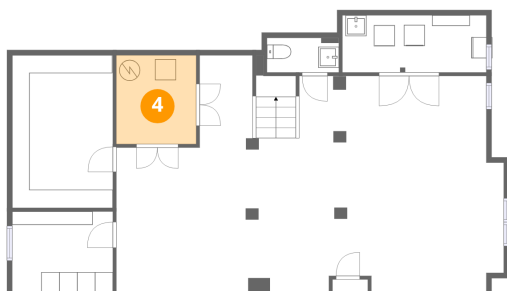
3 Floor 1 - Laundry



Dimensions: 13'10" x 5'6"
Area: 76 sq. ft
Counted as living area: Yes

Heated: Yes
Finished: Yes
Enclosed: Yes
Contiguous: Yes
Permitted: Yes
Wet space: No
Addition: No
Conversion: No

4 Floor 1 - Utility



Dimensions: 7'8" x 8'6"
Area: 65 sq. ft
Counted as living area: No

Heated: Yes
Finished: No
Enclosed: Yes
Contiguous: Yes
Permitted: Yes
Wet space: No
Addition: No
Conversion: No

5 Floor 1 - Storage



Dimensions: 9'8" x 14'8"
Area: 142 sq. ft
Counted as living area: No

Heated: No
Finished: No
Enclosed: No
Contiguous: Yes
Permitted: Yes
Wet space: No
Addition: No
Conversion: No

242 Forest Avenue, Glen Ridge, Essex County, New Jersey,
United States, 07028

6 Floor 1 - Recreation Room



Dimensions: 37'3" x 22'8"
Area: 703 sq. ft
Counted as living area: Yes

Heated: Yes
Finished: Yes
Enclosed: Yes
Contiguous: Yes
Permitted: Yes
Wet space: No
Addition: No
Conversion: No

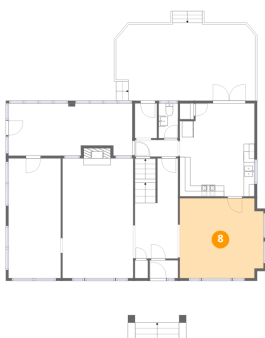
7 Floor 2 - Foyer



Dimensions: 8'0" x 18'7"
Area: 145 sq. ft
Counted as living area: Yes

Heated: Yes
Finished: Yes
Enclosed: Yes
Contiguous: Yes
Permitted: Yes
Wet space: No
Addition: No
Conversion: No

8 Floor 2 - Dining Room



Dimensions: 15'6" x 14'9"
Area: 222 sq. ft
Counted as living area: Yes

Heated: Yes
Finished: Yes
Enclosed: Yes
Contiguous: Yes
Permitted: Yes
Wet space: No
Addition: No
Conversion: No

9 Floor 2 - Hall



Dimensions: 8'0" x 3'1"
Area: 25 sq. ft
Counted as living area: Yes

Heated: Yes
Finished: Yes
Enclosed: Yes
Contiguous: Yes
Permitted: Yes
Wet space: No
Addition: No
Conversion: No

10 Floor 2 - Mudroom



Dimensions: 4'1" x 6'5"
Area: 26 sq. ft
Counted as living area: Yes

Heated: Yes
Finished: Yes
Enclosed: Yes
Contiguous: Yes
Permitted: Yes
Wet space: No
Addition: No
Conversion: No

11 Floor 2 - Porch



Dimensions: 10'10" x 10'11"
Area: 118 sq. ft
Counted as living area: No

Heated: No
Finished: No
Enclosed: No
Contiguous: Yes
Permitted: Yes
Wet space: No
Addition: No
Conversion: No

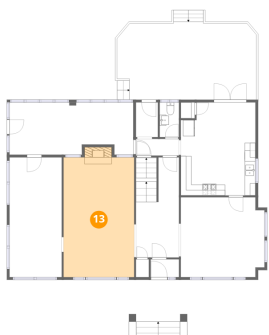
12 Floor 2 - Eat-in Kitchen



Dimensions: 13'10" x 17'3"
Area: 229 sq. ft
Counted as living area: Yes

Heated: Yes
Finished: Yes
Enclosed: Yes
Contiguous: Yes
Permitted: Yes
Wet space: No
Addition: No
Conversion: No

13 Floor 2 - Living Room



Dimensions: 13'1" x 22'2"
Area: 299 sq. ft
Counted as living area: Yes

Heated: Yes
Finished: Yes
Enclosed: Yes
Contiguous: Yes
Permitted: Yes
Wet space: No
Addition: No
Conversion: No

14 Floor 2 - Family Room



Dimensions: 9'8" x 22'2"
Area: 214 sq. ft
Counted as living area: Yes

Heated: Yes
Finished: Yes
Enclosed: Yes
Contiguous: Yes
Permitted: Yes
Wet space: No
Addition: No
Conversion: No

15 Floor 2 - Sun Room



Dimensions: 22'11" x 9'8"
Area: 211 sq. ft
Counted as living area: Yes

Heated: Yes
Finished: Yes
Enclosed: Yes
Contiguous: Yes
Permitted: Yes
Wet space: No
Addition: No
Conversion: No

16 Floor 2 - Entry



Dimensions: 5'3" x 3'4"
Area: 17 sq. ft
Counted as living area: Yes

Heated: Yes
Finished: Yes
Enclosed: Yes
Contiguous: Yes
Permitted: Yes
Wet space: No
Addition: No
Conversion: No

17 Floor 2 - P/R



Dimensions: 3'7" x 6'5"
Area: 23 sq. ft
Counted as living area: Yes

Heated: Yes
Finished: Yes
Enclosed: Yes
Contiguous: Yes
Permitted: Yes
Wet space: Yes
Addition: No
Conversion: No

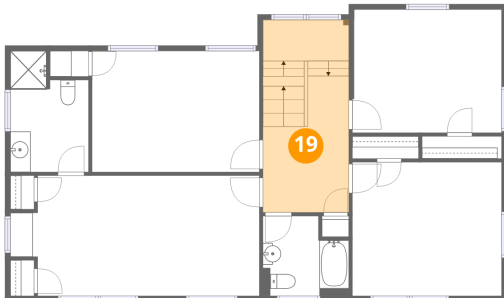
18 Floor 2 - Deck



Dimensions: 25'10" x 14'5"
Area: 372 sq. ft
Counted as living area: No

Heated: No
Finished: No
Enclosed: No
Contiguous: Yes
Permitted: Yes
Wet space: No
Addition: No
Conversion: No

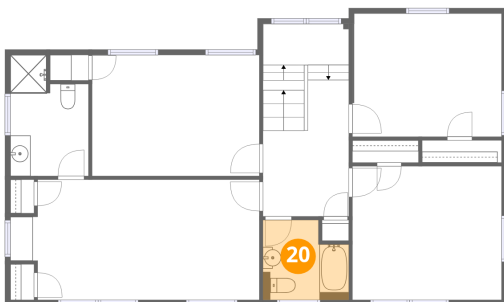
19 Floor 3 - Hall



Dimensions: 7'11" x 12'7"
Area: 142 sq. ft
Counted as living area: Yes

Heated: Yes
Finished: Yes
Enclosed: Yes
Contiguous: Yes
Permitted: Yes
Wet space: No
Addition: No
Conversion: No

20 Floor 3 - Bath

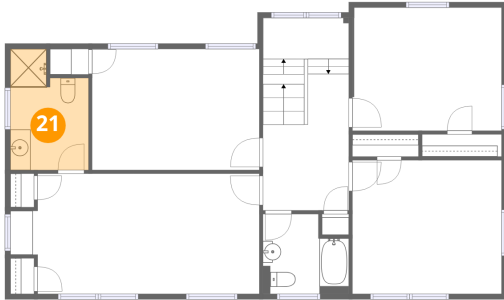


Dimensions: 8'0" x 7'5"
Area: 53 sq. ft
Counted as living area: Yes

Heated: Yes
Finished: Yes
Enclosed: Yes
Contiguous: Yes
Permitted: Yes
Wet space: Yes
Addition: No
Conversion: No

242 Forest Avenue, Glen Ridge, Essex County, New Jersey,
United States, 07028

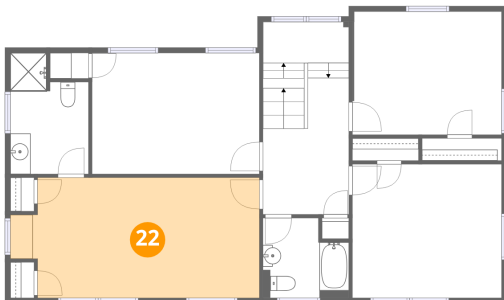
21 Floor 3 - Primary Bath



Dimensions: 7'3" x 11'3"
Area: 70 sq. ft
Counted as living area: Yes

Heated: Yes
Finished: Yes
Enclosed: Yes
Contiguous: Yes
Permitted: Yes
Wet space: Yes
Addition: No
Conversion: No

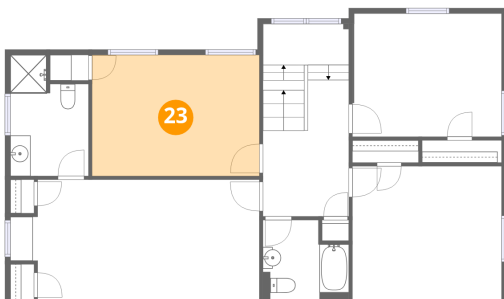
22 Floor 3 - Primary Bedroom



Dimensions: 23'1" x 11'2"
Area: 239 sq. ft
Counted as living area: Yes

Heated: Yes
Finished: Yes
Enclosed: Yes
Contiguous: Yes
Permitted: Yes
Wet space: No
Addition: No
Conversion: No

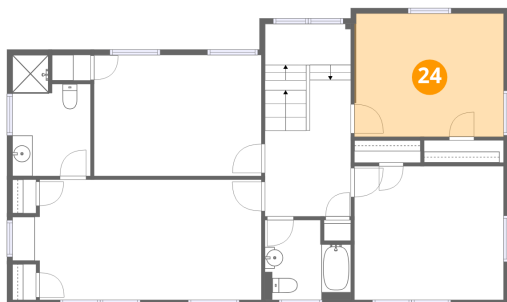
23 Floor 3 - Bedroom



Dimensions: 15'6" x 11'3"
Area: 174 sq. ft
Counted as living area: Yes

Heated: Yes
Finished: Yes
Enclosed: Yes
Contiguous: Yes
Permitted: Yes
Wet space: No
Addition: No
Conversion: No

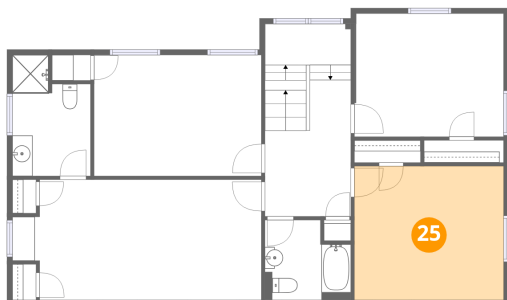
24 Floor 3 - Bedroom



Dimensions: 13'10" x 11'5"
Area: 158 sq. ft
Counted as living area: Yes

Heated: Yes
Finished: Yes
Enclosed: Yes
Contiguous: Yes
Permitted: Yes
Wet space: No
Addition: No
Conversion: No

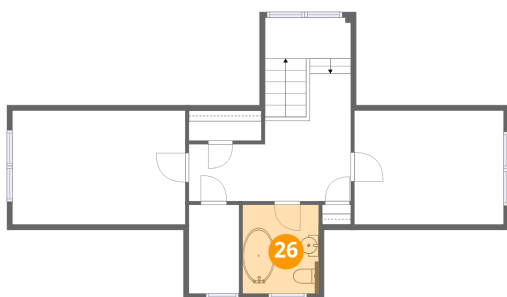
25 Floor 3 - Bedroom



Dimensions: 13'10" x 12'5"
Area: 171 sq. ft
Counted as living area: Yes

Heated: Yes
Finished: Yes
Enclosed: Yes
Contiguous: Yes
Permitted: Yes
Wet space: No
Addition: No
Conversion: No

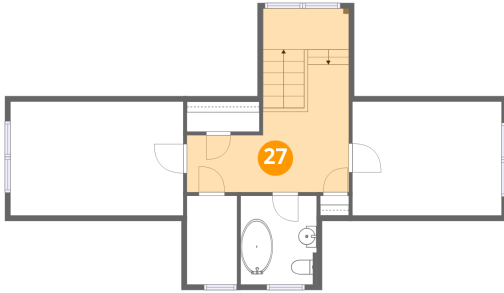
26 Floor 4 - Bath



Dimensions: 7'1" x 8'3"
Area: 58 sq. ft
Counted as living area: Yes

Heated: Yes
Finished: Yes
Enclosed: Yes
Contiguous: Yes
Permitted: Yes
Wet space: Yes
Addition: No
Conversion: No

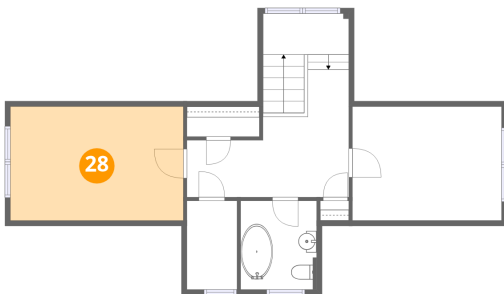
27 Floor 4 - Hall



Dimensions: 15'0" x 11'10"
Area: 173 sq. ft
Counted as living area: Yes

Heated: Yes
Finished: Yes
Enclosed: Yes
Contiguous: Yes
Permitted: Yes
Wet space: No
Addition: No
Conversion: No

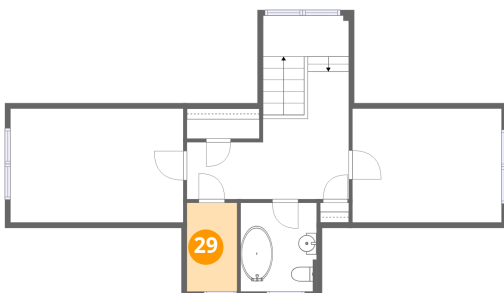
28 Floor 4 - Bedroom



Dimensions: 16'0" x 10'7"
Area: 169 sq. ft
Counted as living area: Yes

Heated: Yes
Finished: Yes
Enclosed: Yes
Contiguous: Yes
Permitted: Yes
Wet space: No
Addition: No
Conversion: No

29 Floor 4 - W.I.C.



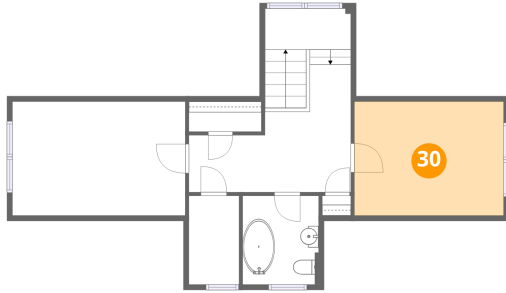
Dimensions: 4'8" x 8'3"
Area: 38 sq. ft
Counted as living area: Yes

Heated: Yes
Finished: Yes
Enclosed: Yes
Contiguous: Yes
Permitted: Yes
Wet space: No
Addition: No
Conversion: No

Home data report

242 Forest Avenue, Glen Ridge, Essex County, New Jersey,
United States, 07028

30 Floor 4 - Office/Bedroom



Dimensions: 13'10" x 10'7"
Area: 146 sq. ft
Counted as living area: Yes

Heated: Yes
Finished: Yes
Enclosed: Yes
Contiguous: Yes
Permitted: Yes
Wet space: No
Addition: No
Conversion: No