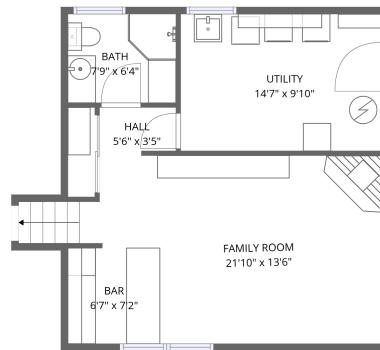
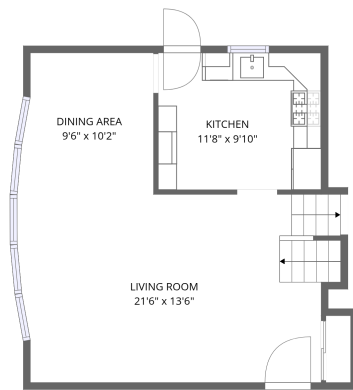
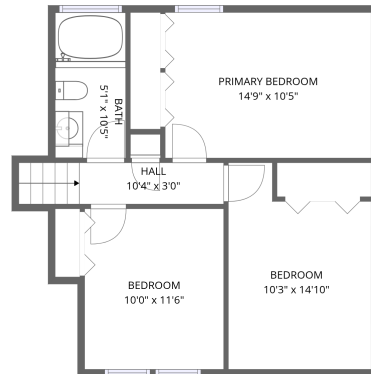


Home data report

8905 Parkside Ave, Morton Grove, IL, US



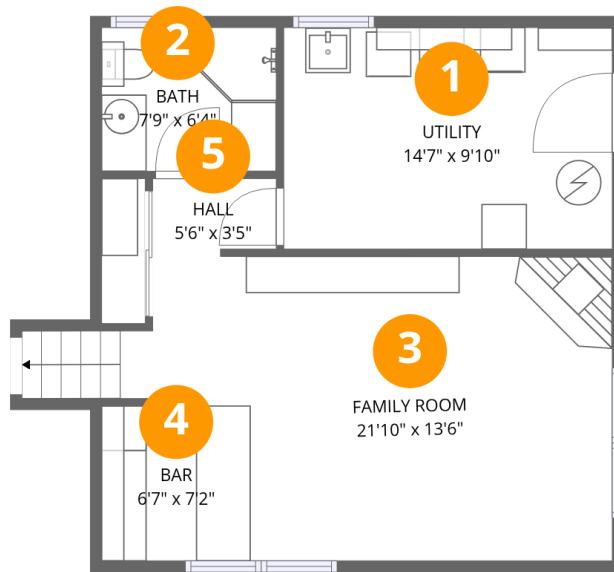
Total Area: 1496 sq. ft

1st Floor: 402 sq. ft, 2nd Floor: 522 sq. ft, 3rd Floor: 572 sq. ft

Excluded: Utility 143 sq. ft, Walls: 152 sq. ft

Property summary





Room dimensions

Floor 1

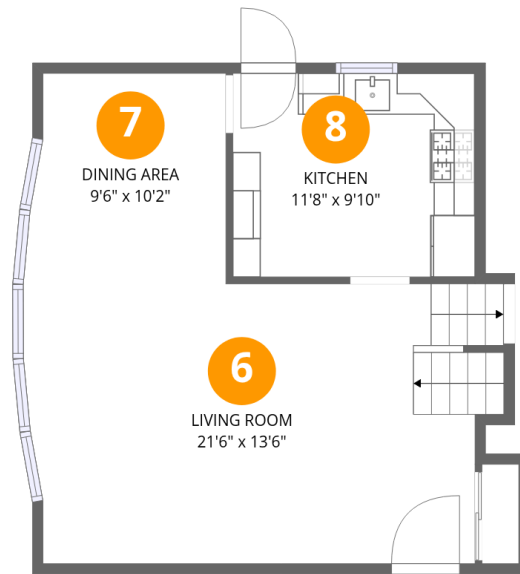
Total:402sqft

Excluded: 143sqft

#		Dimensions	sqft	Counted as living area
1	Utility	14'7" x 9'10"	143 sq. ft	No
2	Bath	7'9" x 6'4"	49 sq. ft	Yes
3	Family Room	21'10" x 13'6"	294 sq. ft	Yes
4	Bar	6'7" x 7'2"	47 sq. ft	Yes
5	Hall	5'6" x 3'5"	19 sq. ft	Yes

Home data report

8905 Parkside Ave, Morton Grove, IL, US



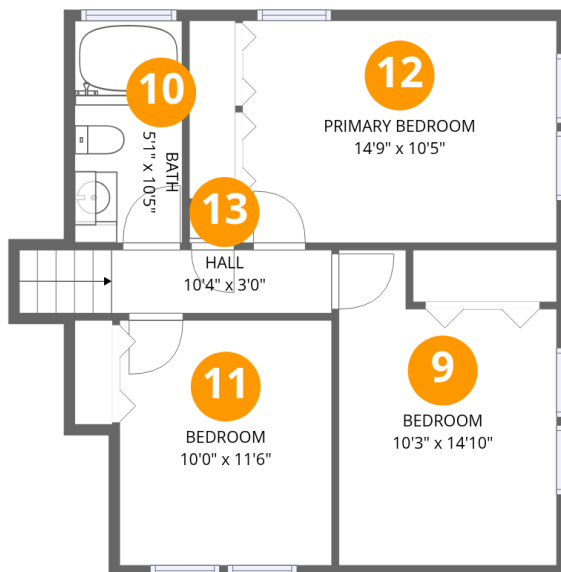
Room dimensions

Floor 2

Total:522sqft

Excluded: 0sqft

#		Dimensions	sqft	Counted as living area
6	Living Room	21'6" x 13'6"	289 sq. ft	Yes
7	Dining Area	9'6" x 10'2"	96 sq. ft	Yes
8	Kitchen	11'8" x 9'10"	114 sq. ft	Yes



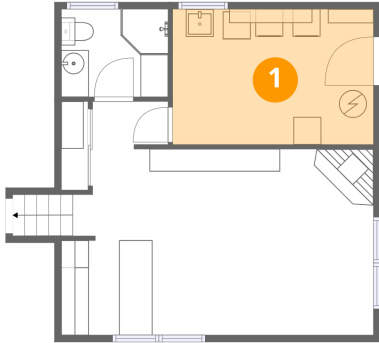
Room dimensions

Floor 3

Total: 572sqft Excluded: 0sqft

#		Dimensions	sqft	Counted as living area
9	Bedroom	10'3" x 14'10"	151 sq. ft	Yes
10	Bath	5'1" x 10'5"	53 sq. ft	Yes
11	Bedroom	10'0" x 11'6"	115 sq. ft	Yes
12	Primary Bedroom	14'9" x 10'5"	153 sq. ft	Yes
13	Hall	10'4" x 3'0"	31 sq. ft	Yes

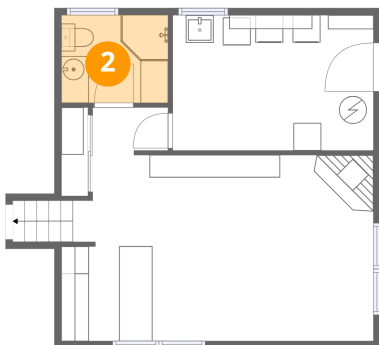
1 Floor 1 - Utility



Dimensions: 14'7" x 9'10"
Area: 143 sq. ft
Counted as living area: No

Heated: Yes
Finished: No
Enclosed: Yes
Contiguous: Yes
Permitted: Yes
Wet space: No
Addition: No
Conversion: No

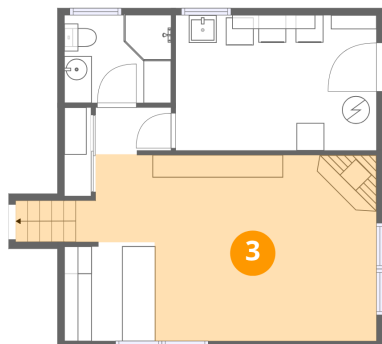
2 Floor 1 - Bath



Dimensions: 7'9" x 6'4"
Area: 49 sq. ft
Counted as living area: Yes

Heated: Yes
Finished: Yes
Enclosed: Yes
Contiguous: Yes
Permitted: Yes
Wet space: Yes
Addition: No
Conversion: No

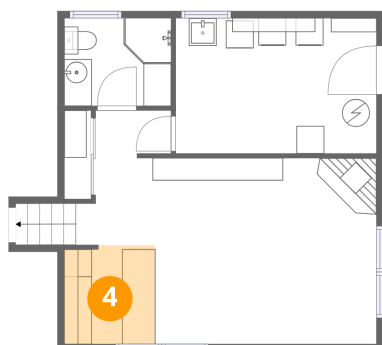
3 Floor 1 - Family Room



Dimensions: 21'10" x 13'6"
Area: 294 sq. ft
Counted as living area: Yes

Heated: Yes
Finished: Yes
Enclosed: Yes
Contiguous: Yes
Permitted: Yes
Wet space: No
Addition: No
Conversion: No

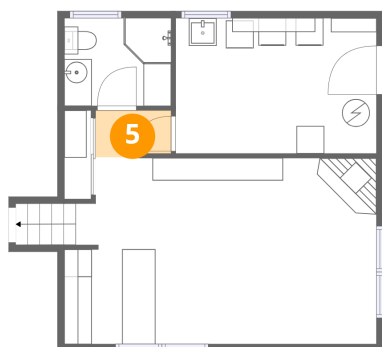
4 Floor 1 - Bar



Dimensions: 6'7" x 7'2"
Area: 47 sq. ft
Counted as living area: Yes

Heated: Yes
Finished: Yes
Enclosed: Yes
Contiguous: Yes
Permitted: Yes
Wet space: No
Addition: No
Conversion: No

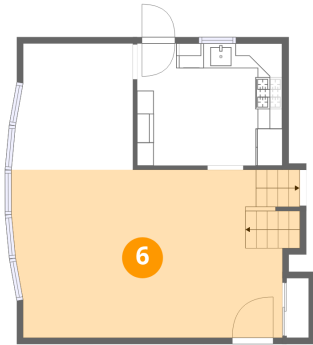
5 Floor 1 - Hall



Dimensions: 5'6" x 3'5"
Area: 19 sq. ft
Counted as living area: Yes

Heated: Yes
Finished: Yes
Enclosed: Yes
Contiguous: Yes
Permitted: Yes
Wet space: No
Addition: No
Conversion: No

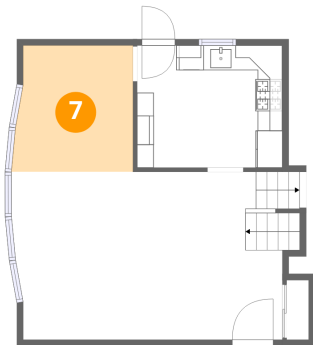
6 Floor 2 - Living Room



Dimensions: 21'6" x 13'6"
Area: 289 sq. ft
Counted as living area: Yes

Heated: Yes
Finished: Yes
Enclosed: Yes
Contiguous: Yes
Permitted: Yes
Wet space: No
Addition: No
Conversion: No

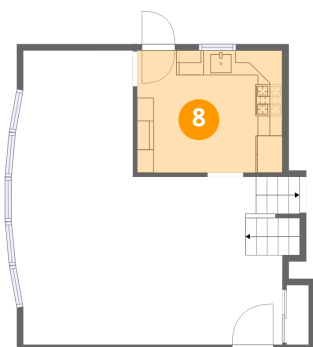
7 Floor 2 - Dining Area



Dimensions: 9'6" x 10'2"
Area: 96 sq. ft
Counted as living area: Yes

Heated: Yes
Finished: Yes
Enclosed: Yes
Contiguous: Yes
Permitted: Yes
Wet space: No
Addition: No
Conversion: No

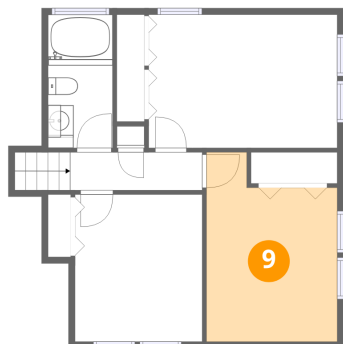
8 Floor 2 - Kitchen



Dimensions: 11'8" x 9'10"
Area: 114 sq. ft
Counted as living area: Yes

Heated: Yes
Finished: Yes
Enclosed: Yes
Contiguous: Yes
Permitted: Yes
Wet space: No
Addition: No
Conversion: No

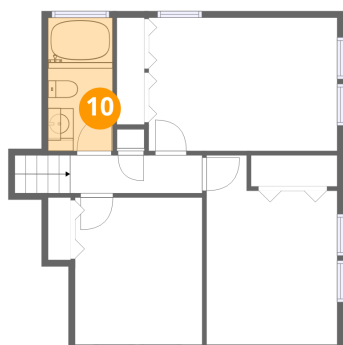
9 Floor 3 - Bedroom



Dimensions: 10'3" x 14'10"
Area: 151 sq. ft
Counted as living area: Yes

Heated: Yes
Finished: Yes
Enclosed: Yes
Contiguous: Yes
Permitted: Yes
Wet space: No
Addition: No
Conversion: No

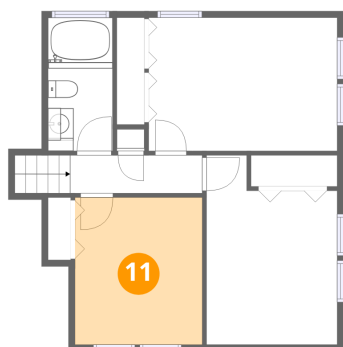
10 Floor 3 - Bath



Dimensions: 5'1" x 10'5"
Area: 53 sq. ft
Counted as living area: Yes

Heated: Yes
Finished: Yes
Enclosed: Yes
Contiguous: Yes
Permitted: Yes
Wet space: Yes
Addition: No
Conversion: No

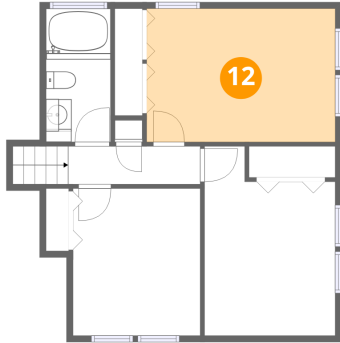
11 Floor 3 - Bedroom



Dimensions: 10'0" x 11'6"
Area: 115 sq. ft
Counted as living area: Yes

Heated: Yes
Finished: Yes
Enclosed: Yes
Contiguous: Yes
Permitted: Yes
Wet space: No
Addition: No
Conversion: No

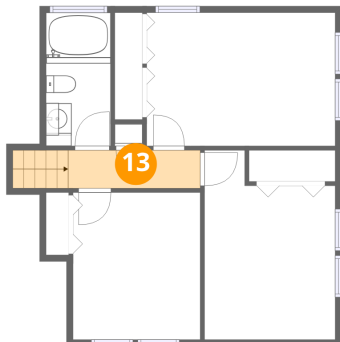
12 Floor 3 - Primary Bedroom



Dimensions: 14'9" x 10'5"
Area: 153 sq. ft
Counted as living area: Yes

Heated: Yes
Finished: Yes
Enclosed: Yes
Contiguous: Yes
Permitted: Yes
Wet space: No
Addition: No
Conversion: No

13 Floor 3 - Hall



Dimensions: 10'4" x 3'0"
Area: 31 sq. ft
Counted as living area: Yes

Heated: Yes
Finished: Yes
Enclosed: Yes
Contiguous: Yes
Permitted: Yes
Wet space: No
Addition: No
Conversion: No