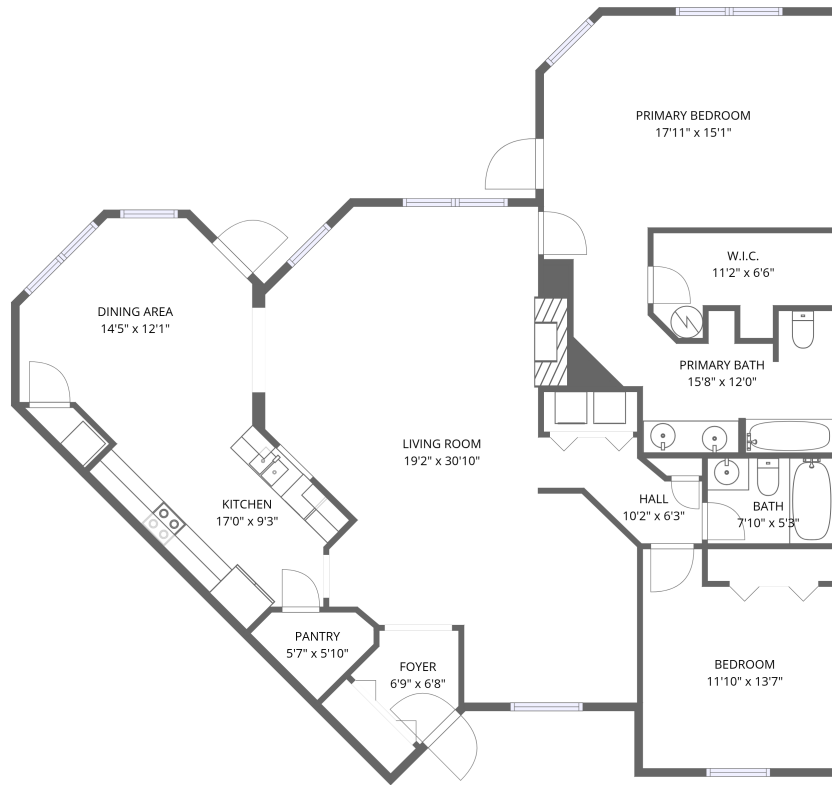


1024 Porte Harbour Arch, Hampton, VA, US



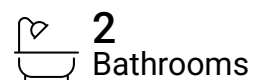
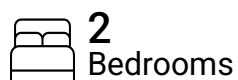
1st floor

Total Area: 1601 sq. ft

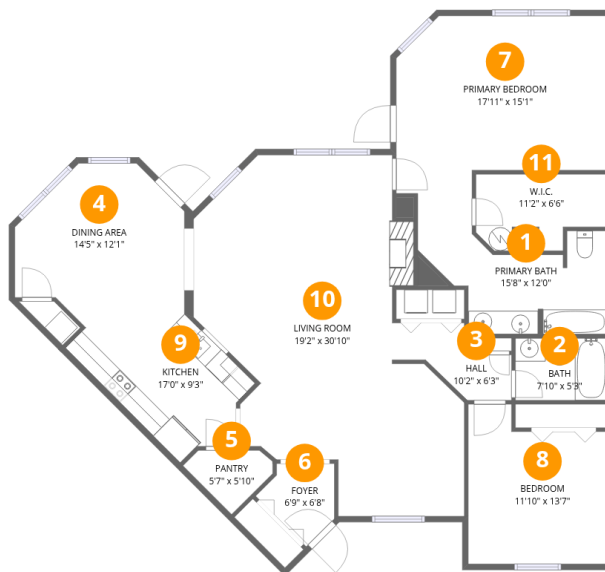
1st Floor: 1601 sq. ft

Excluded: Walls: 0 sq. ft

Property summary



1024 Porte Harbour Arch, Hampton, VA, US



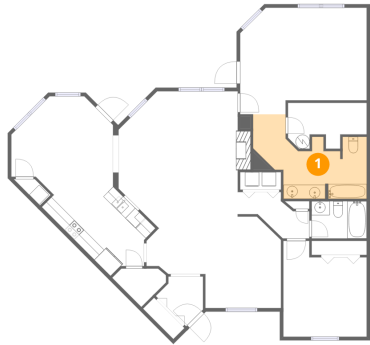
Room dimensions

Floor 1

Total: 1601 sqft Excluded: 0 sqft

#		Dimensions	sqft	Counted as living area
1	Primary Bath	15'8" x 12'0"	121 sq. ft	Yes
2	Bath	7'10" x 5'3"	41 sq. ft	Yes
3	Hall	10'2" x 6'3"	41 sq. ft	Yes
4	Dining Area	14'5" x 12'1"	149 sq. ft	Yes
5	Pantry	5'7" x 5'10"	26 sq. ft	Yes
6	Foyer	6'9" x 6'8"	32 sq. ft	Yes
7	Primary Bedroom	17'11" x 15'1"	242 sq. ft	Yes
8	Bedroom	11'10" x 13'7"	142 sq. ft	Yes
9	Kitchen	17'0" x 9'3"	129 sq. ft	Yes
10	Living Room	19'2" x 30'10"	485 sq. ft	Yes
11	W.I.C.	11'2" x 6'6"	59 sq. ft	Yes

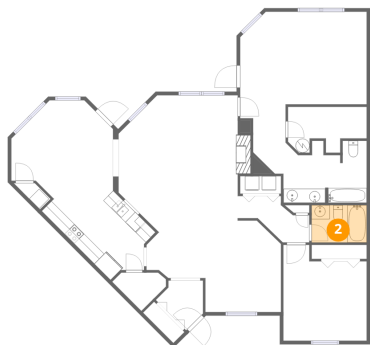
1 Floor 1 - Primary Bath



Dimensions: 15'8" x 12'0"
Area: 121 sq. ft
Counted as living area: Yes

Heated: Yes
Finished: Yes
Enclosed: Yes
Contiguous: Yes
Permitted: Yes
Wet space: Yes
Addition: No
Conversion: No

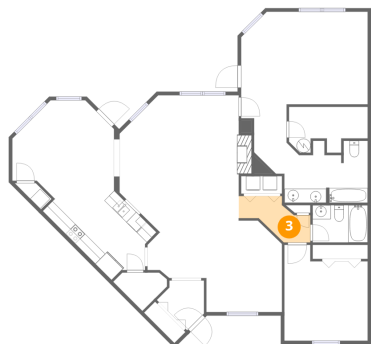
2 Floor 1 - Bath



Dimensions: 7'10" x 5'3"
Area: 41 sq. ft
Counted as living area: Yes

Heated: Yes
Finished: Yes
Enclosed: Yes
Contiguous: Yes
Permitted: Yes
Wet space: Yes
Addition: No
Conversion: No

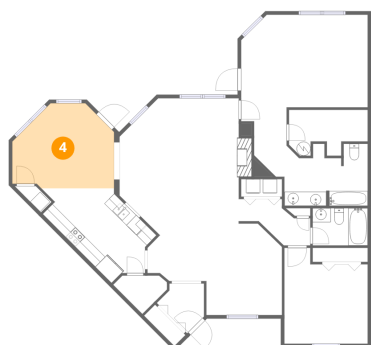
3 Floor 1 - Hall



Dimensions: 10'2" x 6'3"
Area: 41 sq. ft
Counted as living area: Yes

Heated: Yes
Finished: Yes
Enclosed: Yes
Contiguous: Yes
Permitted: Yes
Wet space: No
Addition: No
Conversion: No

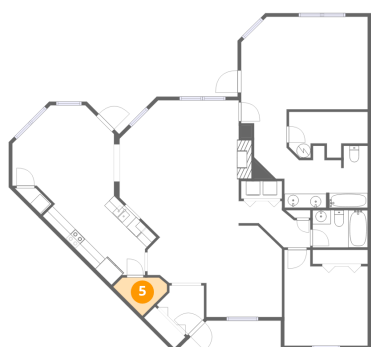
4 Floor 1 - Dining Area



Dimensions: 14'5" x 12'1"
Area: 149 sq. ft
Counted as living area: Yes

Heated: Yes
Finished: Yes
Enclosed: Yes
Contiguous: Yes
Permitted: Yes
Wet space: No
Addition: No
Conversion: No

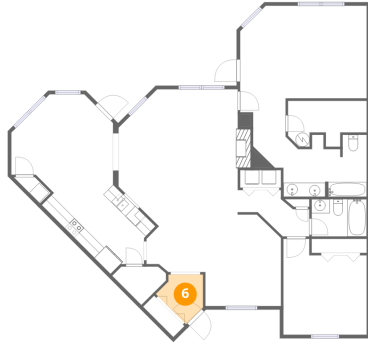
5 Floor 1 - Pantry



Dimensions: 5'7" x 5'10"
Area: 26 sq. ft
Counted as living area: Yes

Heated: Yes
Finished: Yes
Enclosed: Yes
Contiguous: Yes
Permitted: Yes
Wet space: No
Addition: No
Conversion: No

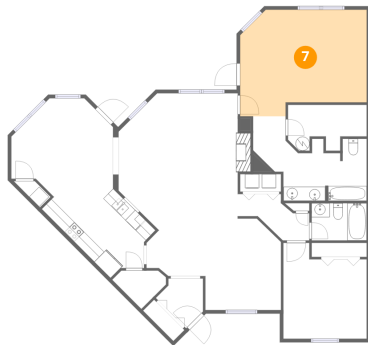
6 Floor 1 - Foyer



Dimensions: 6'9" x 6'8"
Area: 32 sq. ft
Counted as living area: Yes

Heated: Yes
Finished: Yes
Enclosed: Yes
Contiguous: Yes
Permitted: Yes
Wet space: No
Addition: No
Conversion: No

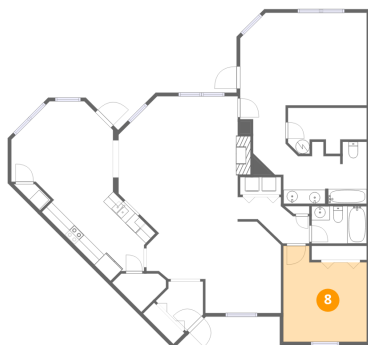
7 Floor 1 - Primary Bedroom



Dimensions: 17'11" x 15'1"
Area: 242 sq. ft
Counted as living area: Yes

Heated: Yes
Finished: Yes
Enclosed: Yes
Contiguous: Yes
Permitted: Yes
Wet space: No
Addition: No
Conversion: No

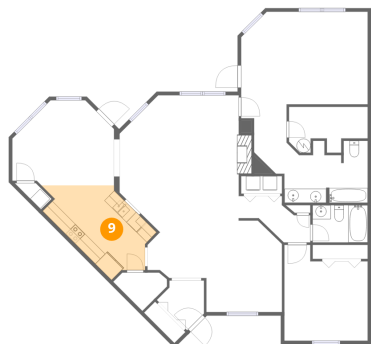
8 Floor 1 - Bedroom



Dimensions: 11'10" x 13'7"
Area: 142 sq. ft
Counted as living area: Yes

Heated: Yes
Finished: Yes
Enclosed: Yes
Contiguous: Yes
Permitted: Yes
Wet space: No
Addition: No
Conversion: No

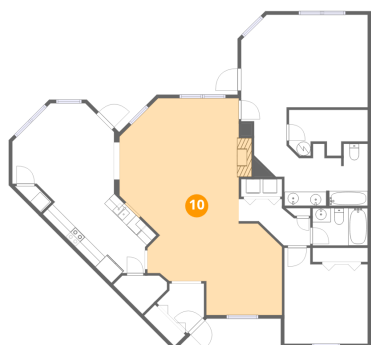
9 Floor 1 - Kitchen



Dimensions: 17'0" x 9'3"
Area: 129 sq. ft
Counted as living area: Yes

Heated: Yes
Finished: Yes
Enclosed: Yes
Contiguous: Yes
Permitted: Yes
Wet space: No
Addition: No
Conversion: No

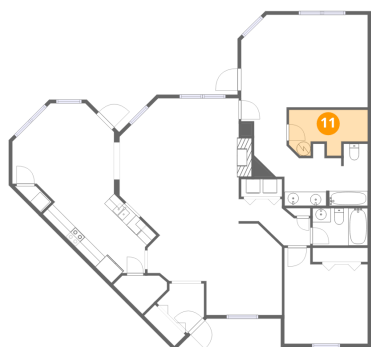
10 Floor 1 - Living Room



Dimensions: 19'2" x 30'10"
Area: 485 sq. ft
Counted as living area: Yes

Heated: Yes
Finished: Yes
Enclosed: Yes
Contiguous: Yes
Permitted: Yes
Wet space: No
Addition: No
Conversion: No

11 Floor 1 - W.I.C.



Dimensions: 11'2" x 6'6"
Area: 59 sq. ft
Counted as living area: Yes

Heated: Yes
Finished: Yes
Enclosed: Yes
Contiguous: Yes
Permitted: Yes
Wet space: No
Addition: No
Conversion: No