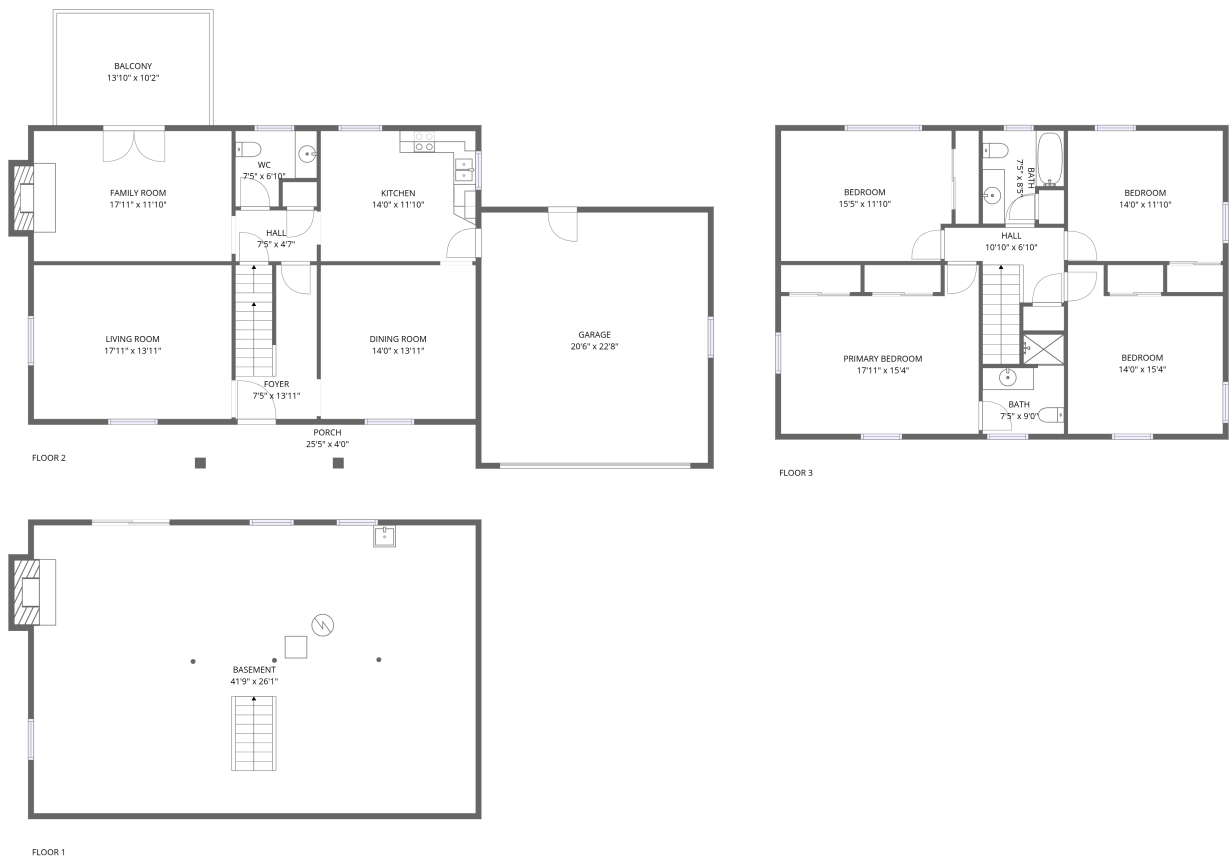


Home report

5215 Summer Drive, North Lakes, Roanoke, Roanoke County,
Virginia, United States, 24019



Total Area: 2142 sq. ft

Below Ground: 0 sq. ft, Floor 2: 1046 sq. ft, Floor 3: 1096 sq. ft

Excluded: Basement 1046 sq. ft, Fireplace 24 sq. ft, Porch 101 sq. ft, Balcony 140 sq. ft, Garage 465 sq. ft, Walls: 231 sq. ft

Property summary

 **3** Floors

 **4** Bedrooms

 **2** Bathrooms

Home report

**5215 Summer Drive, North Lakes, Roanoke, Roanoke County,
Virginia, United States, 24019**

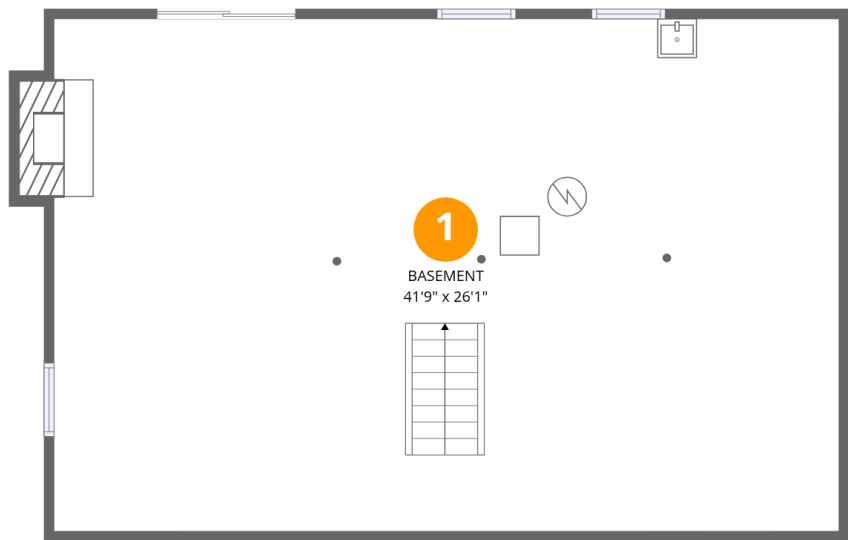


1
Half baths



1
Garages

5215 Summer Drive, North Lakes, Roanoke, Roanoke County,
Virginia, United States, 24019



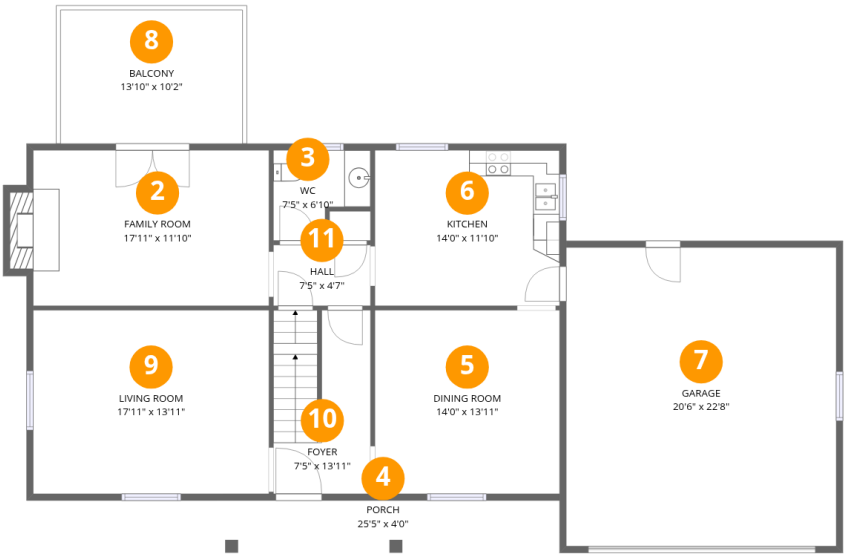
Room dimensions

Floor 1 Below ground Total:0sqft Excluded: 1058sqft

#		Max Dimensions	sqft	Included
1	Basement	41'9" x 26'1"	1053 sq. ft	No

Home report

5215 Summer Drive, North Lakes, Roanoke, Roanoke County,
Virginia, United States, 24019

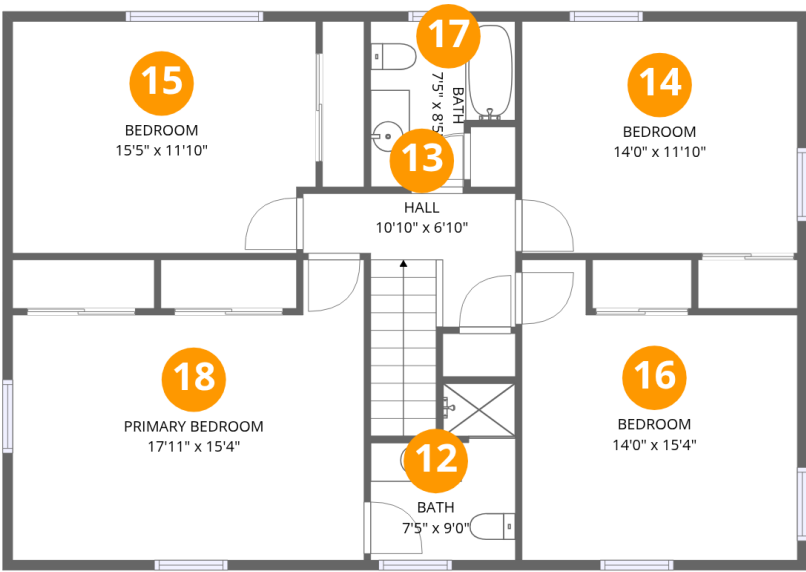


Room dimensions

Floor 2 Total:1046sqft Excluded: 718sqft

#		Max Dimensions	sqft	Included
2	Family Room	17'11" x 11'10"	222 sq. ft	Yes
3	WC	7'5" x 6'10"	42 sq. ft	Yes
4	Porch	25'5" x 4'0"	101 sq. ft	No
5	Dining Room	14'0" x 13'11"	196 sq. ft	Yes
6	Kitchen	14'0" x 11'10"	166 sq. ft	Yes
7	Garage	20'6" x 22'8"	465 sq. ft	No
8	Balcony	13'10" x 10'2"	140 sq. ft	No
9	Living Room	17'11" x 13'11"	250 sq. ft	Yes
10	Foyer	7'5" x 13'11"	100 sq. ft	Yes
11	Hall	7'5" x 4'7"	34 sq. ft	Yes

5215 Summer Drive, North Lakes, Roanoke, Roanoke County,
Virginia, United States, 24019



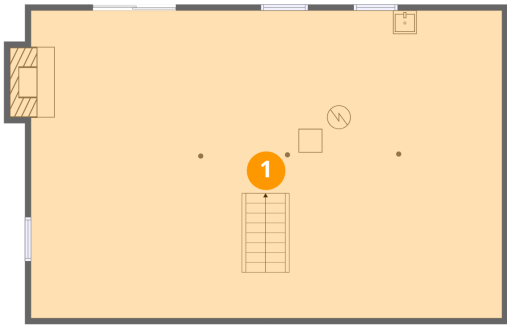
Room dimensions

Floor 3 Total:1096sqft Excluded: 0sqft

#		Max Dimensions	sqft	Included
12	Bath	7'5" x 9'0"	55 sq. ft	Yes
13	Hall	10'10" x 6'10"	79 sq. ft	Yes
14	Bedroom	14'0" x 11'10"	166 sq. ft	Yes
15	Bedroom	15'5" x 11'10"	179 sq. ft	Yes
16	Bedroom	14'0" x 15'4"	184 sq. ft	Yes
17	Bath	7'5" x 8'5"	53 sq. ft	Yes
18	Primary Bedroom	17'11" x 15'4"	232 sq. ft	Yes

5215 Summer Drive, North Lakes, Roanoke, Roanoke County,
Virginia, United States, 24019

1 Floor 1 - Basement



Max Dimensions: 41'9" x 26'1"
Calculated Area: 1053 sq. ft
Included: No

Heated: Yes
Finished: No
Enclosed: Yes
Contiguous: Yes
Permitted: Yes
Wet space: No
Addition: No
Conversion: No

2 Floor 2 - Family Room



Max Dimensions: 17'11" x 11'10"
Calculated Area: 222 sq. ft
Included: Yes

Heated: Yes
Finished: Yes
Enclosed: Yes
Contiguous: Yes
Permitted: Yes
Wet space: No
Addition: No
Conversion: No

5215 Summer Drive, North Lakes, Roanoke, Roanoke County,
Virginia, United States, 24019

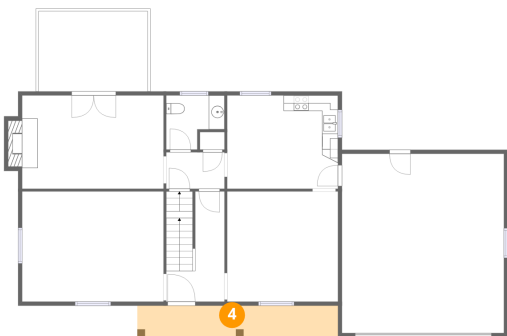
3 Floor 2 - WC



Max Dimensions: 7'5" x 6'10"
Calculated Area: 42 sq. ft
Included: Yes

Heated: Yes
Finished: Yes
Enclosed: Yes
Contiguous: Yes
Permitted: Yes
Wet space: Yes
Addition: No
Conversion: No

4 Floor 2 - Porch



Max Dimensions: 25'5" x 4'0"
Calculated Area: 101 sq. ft
Included: No

Heated: No
Finished: No
Enclosed: No
Contiguous: Yes
Permitted: Yes
Wet space: No
Addition: No
Conversion: No

5 Floor 2 - Dining Room

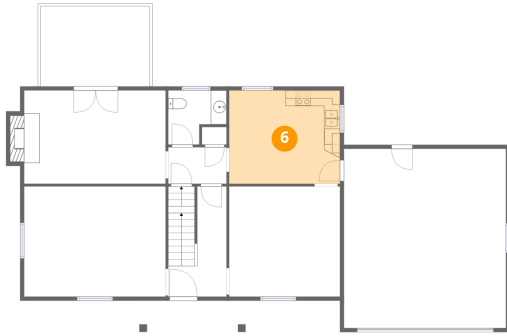


Max Dimensions: 14'0" x 13'11"
Calculated Area: 196 sq. ft
Included: Yes

Heated: Yes
Finished: Yes
Enclosed: Yes
Contiguous: Yes
Permitted: Yes
Wet space: No
Addition: No
Conversion: No

5215 Summer Drive, North Lakes, Roanoke, Roanoke County,
Virginia, United States, 24019

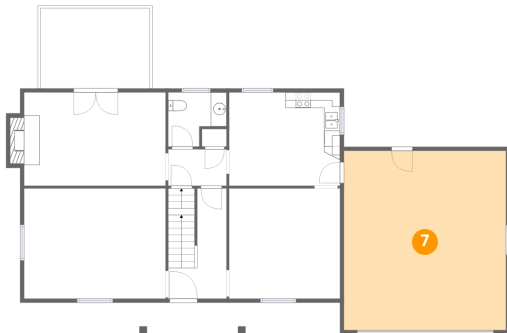
6 Floor 2 - Kitchen



Max Dimensions: 14'0" x 11'10"
Calculated Area: 166 sq. ft
Included: Yes

Heated: Yes
Finished: Yes
Enclosed: Yes
Contiguous: Yes
Permitted: Yes
Wet space: No
Addition: No
Conversion: No

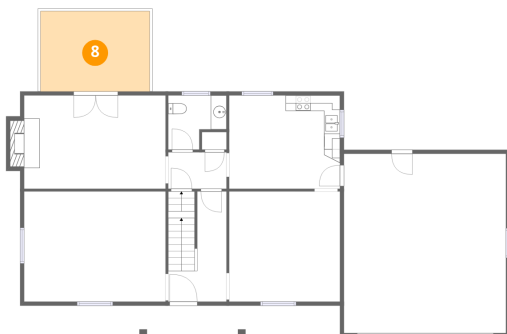
7 Floor 2 - Garage



Max Dimensions: 20'6" x 22'8"
Calculated Area: 465 sq. ft
Included: No

Heated: No
Finished: No
Enclosed: Yes
Contiguous: Yes
Permitted: Yes
Wet space: No
Addition: No
Conversion: No

8 Floor 2 - Balcony



Max Dimensions: 13'10" x 10'2"
Calculated Area: 140 sq. ft
Included: No

Heated: No
Finished: No
Enclosed: No
Contiguous: Yes
Permitted: Yes
Wet space: No
Addition: No
Conversion: No

5215 Summer Drive, North Lakes, Roanoke, Roanoke County,
Virginia, United States, 24019

9 Floor 2 - Living Room



Max Dimensions: 17'11" x 13'11"
Calculated Area: 250 sq. ft
Included: Yes

Heated: Yes
Finished: Yes
Enclosed: Yes
Contiguous: Yes
Permitted: Yes
Wet space: No
Addition: No
Conversion: No

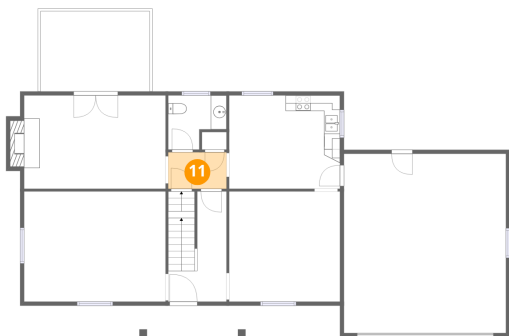
10 Floor 2 - Foyer



Max Dimensions: 7'5" x 13'11"
Calculated Area: 100 sq. ft
Included: Yes

Heated: Yes
Finished: Yes
Enclosed: Yes
Contiguous: Yes
Permitted: Yes
Wet space: No
Addition: No
Conversion: No

11 Floor 2 - Hall

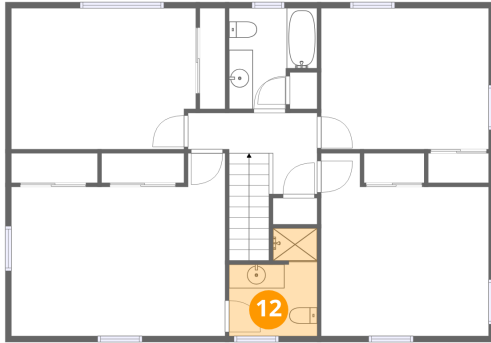


Max Dimensions: 7'5" x 4'7"
Calculated Area: 34 sq. ft
Included: Yes

Heated: Yes
Finished: Yes
Enclosed: Yes
Contiguous: Yes
Permitted: Yes
Wet space: No
Addition: No
Conversion: No

5215 Summer Drive, North Lakes, Roanoke, Roanoke County,
Virginia, United States, 24019

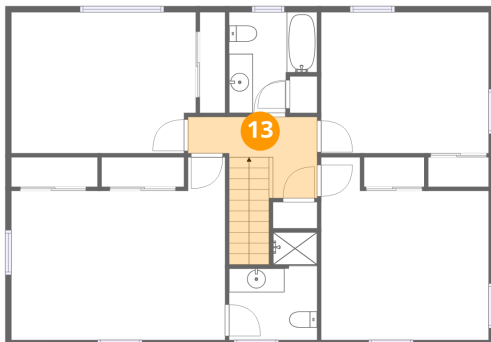
12 Floor 3 - Bath



Max Dimensions: 7'5" x 9'0"
Calculated Area: 55 sq. ft
Included: Yes

Heated: Yes
Finished: Yes
Enclosed: Yes
Contiguous: Yes
Permitted: Yes
Wet space: Yes
Addition: No
Conversion: No

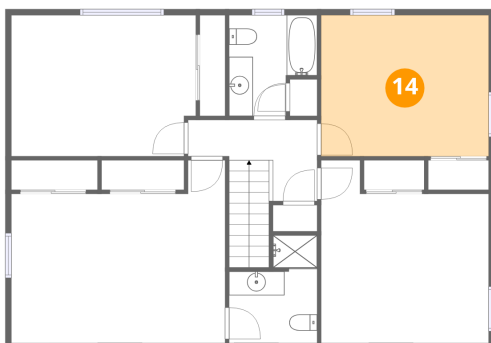
13 Floor 3 - Hall



Max Dimensions: 10'10" x 6'10"
Calculated Area: 79 sq. ft
Included: Yes

Heated: Yes
Finished: Yes
Enclosed: Yes
Contiguous: Yes
Permitted: Yes
Wet space: No
Addition: No
Conversion: No

14 Floor 3 - Bedroom

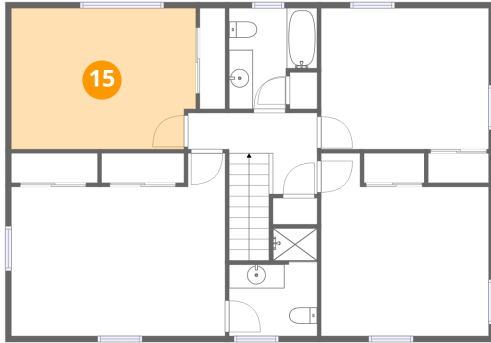


Max Dimensions: 14'0" x 11'10"
Calculated Area: 166 sq. ft
Included: Yes

Heated: Yes
Finished: Yes
Enclosed: Yes
Contiguous: Yes
Permitted: Yes
Wet space: No
Addition: No
Conversion: No

5215 Summer Drive, North Lakes, Roanoke, Roanoke County,
Virginia, United States, 24019

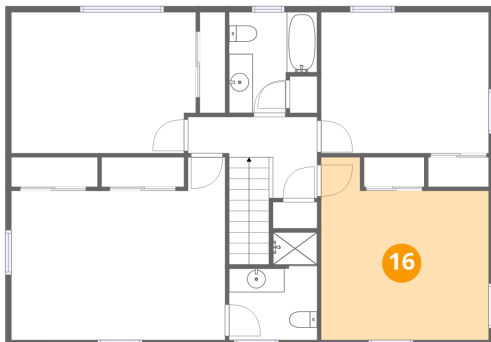
15 Floor 3 - Bedroom



Max Dimensions: 15'5" x 11'10"
Calculated Area: 179 sq. ft
Included: Yes

Heated: Yes
Finished: Yes
Enclosed: Yes
Contiguous: Yes
Permitted: Yes
Wet space: No
Addition: No
Conversion: No

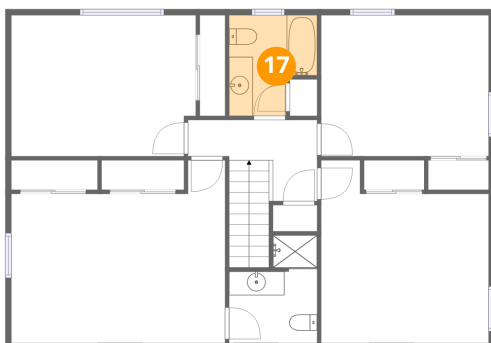
16 Floor 3 - Bedroom



Max Dimensions: 14'0" x 15'4"
Calculated Area: 184 sq. ft
Included: Yes

Heated: Yes
Finished: Yes
Enclosed: Yes
Contiguous: Yes
Permitted: Yes
Wet space: No
Addition: No
Conversion: No

17 Floor 3 - Bath

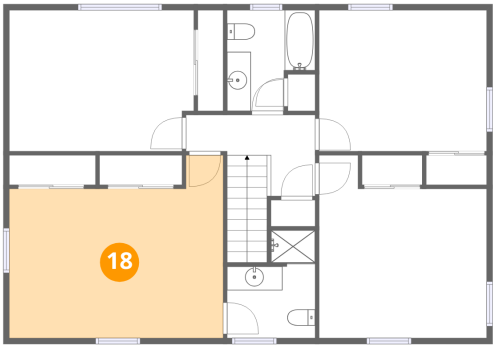


Max Dimensions: 7'5" x 8'5"
Calculated Area: 53 sq. ft
Included: Yes

Heated: Yes
Finished: Yes
Enclosed: Yes
Contiguous: Yes
Permitted: Yes
Wet space: Yes
Addition: No
Conversion: No

5215 Summer Drive, North Lakes, Roanoke, Roanoke County,
Virginia, United States, 24019

18 Floor 3 - Primary Bedroom



Max Dimensions: 17'11" x 15'4"
Calculated Area: 232 sq. ft
Included: Yes

Heated: Yes
Finished: Yes
Enclosed: Yes
Contiguous: Yes
Permitted: Yes
Wet space: No
Addition: No
Conversion: No