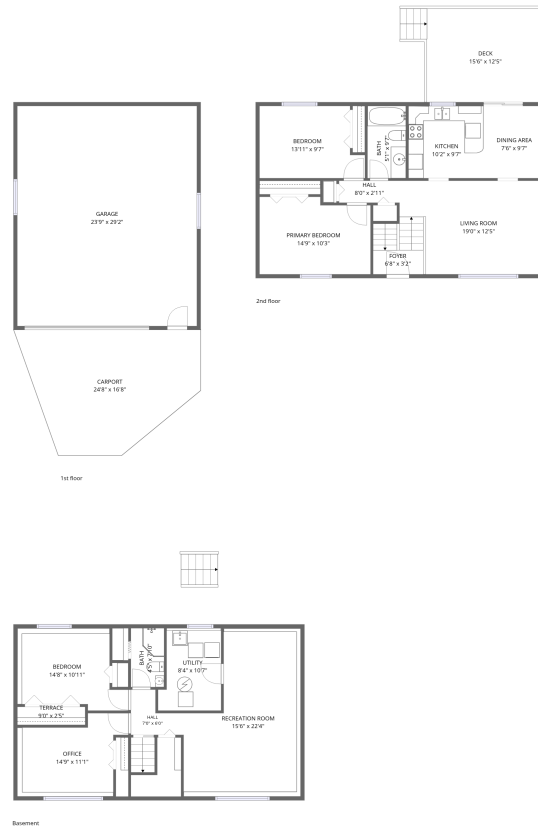


Home data report

907 California Ave W, St Paul, MN, US



Total Area: 1570 sq. ft

Basement: 733 sq. ft, 1st Floor: 0 sq. ft, 2nd Floor: 837 sq. ft

Excluded: Terrace 22 sq. ft, Utility 82 sq. ft, Garage 693 sq. ft, Carport 319 sq. ft, Deck 207 sq. ft, Walls: 176 sq. ft

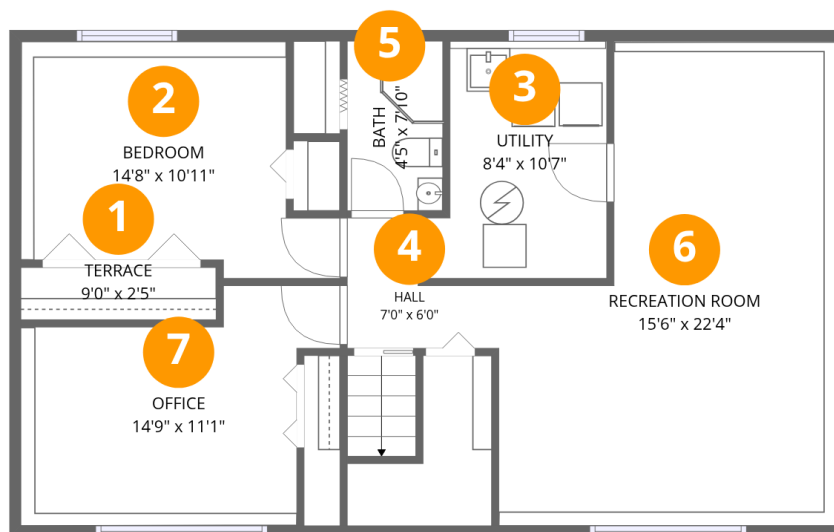
Property summary

 **3** Floors

 **3** Bedrooms

 **2** Bathrooms

 **1** Garages



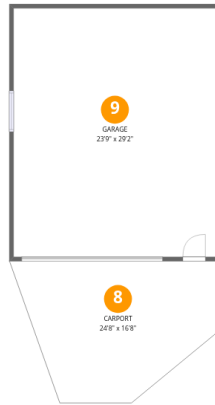
Room dimensions

Floor 1 Below grade

Total:733sqft

Excluded: 104sqft

#		Dimensions	sqft	Counted as living area
1	Terrace	9'0" x 2'5"	22 sq. ft	No
2	Bedroom	14'8" x 10'11"	132 sq. ft	Yes
3	Utility	8'4" x 10'7"	82 sq. ft	No
4	Hall	7'0" x 6'0"	30 sq. ft	Yes
5	Bath	4'5" x 7'10"	34 sq. ft	Yes
6	Recreation Room	15'6" x 22'4"	286 sq. ft	Yes
7	Office	14'9" x 11'1"	129 sq. ft	Yes



Room dimensions

Floor 2

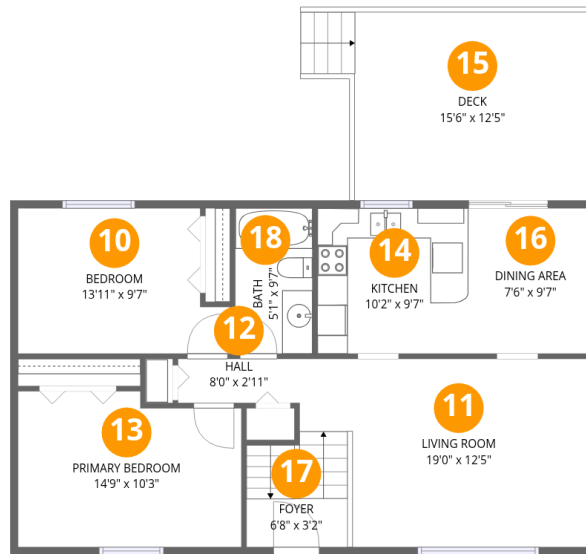
Total:0sqft

Excluded: 1012sqft

#		Dimensions	sqft	Counted as living area
8	Carport	24'8" x 16'8"	319 sq. ft	No
9	Garage	23'9" x 29'2"	693 sq. ft	No

Home data report

907 California Ave W, St Paul, MN, US



Room dimensions

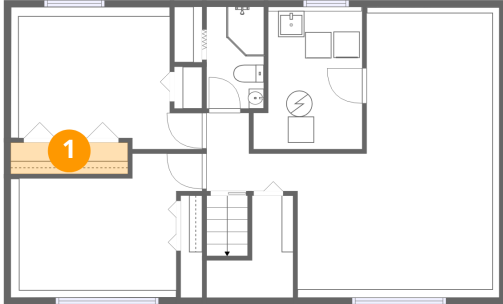
Floor 3

Total:837sqft

Excluded: 207sqft

#		Dimensions	sqft	Counted as living area
10	Bedroom	13'11" x 9'7"	121 sq. ft	Yes
11	Living Room	19'0" x 12'5"	211 sq. ft	Yes
12	Hall	8'0" x 2'11"	23 sq. ft	Yes
13	Primary Bedroom	14'9" x 10'3"	144 sq. ft	Yes
14	Kitchen	10'2" x 9'7"	98 sq. ft	Yes
15	Deck	15'6" x 12'5"	207 sq. ft	No
16	Dining Area	7'6" x 9'7"	73 sq. ft	Yes
17	Foyer	6'8" x 3'2"	47 sq. ft	Yes
18	Bath	5'1" x 9'7"	49 sq. ft	Yes

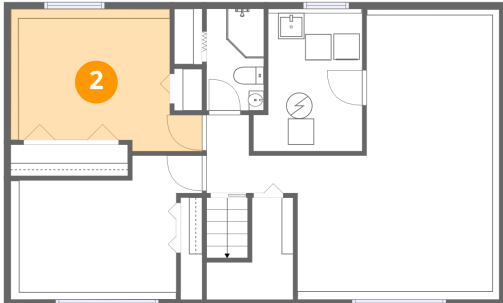
1 Floor 1 - Terrace



Dimensions: 9'0" x 2'5"
Area: 22 sq. ft
Counted as living area: No

Heated: No
Finished: No
Enclosed: No
Contiguous: Yes
Permitted: No
Wet space: No
Addition: No
Conversion: No

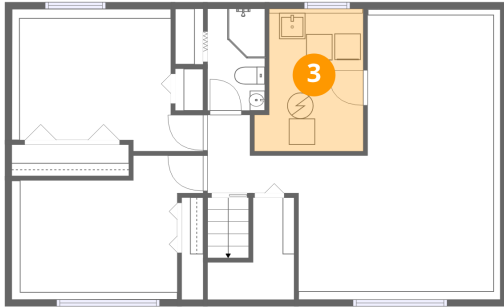
2 Floor 1 - Bedroom



Dimensions: 14'8" x 10'11"
Area: 132 sq. ft
Counted as living area: Yes

Heated: Yes
Finished: Yes
Enclosed: Yes
Contiguous: Yes
Permitted: Yes
Wet space: No
Addition: No
Conversion: No

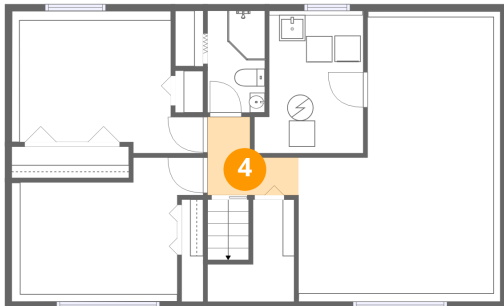
3 Floor 1 - Utility



Dimensions: 8'4" x 10'7"
Area: 82 sq. ft
Counted as living area: No

Heated: Yes
Finished: No
Enclosed: Yes
Contiguous: Yes
Permitted: Yes
Wet space: No
Addition: No
Conversion: No

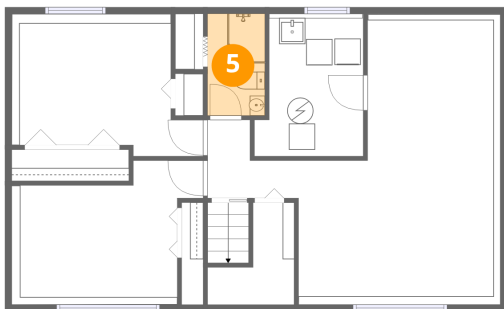
4 Floor 1 - Hall



Dimensions: 7'0" x 6'0"
Area: 30 sq. ft
Counted as living area: Yes

Heated: Yes
Finished: Yes
Enclosed: Yes
Contiguous: Yes
Permitted: Yes
Wet space: No
Addition: No
Conversion: No

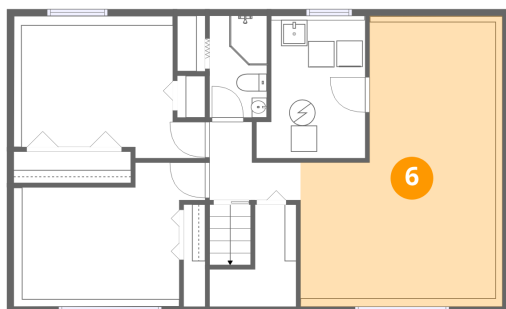
5 Floor 1 - Bath



Dimensions: 4'5" x 7'10"
Area: 34 sq. ft
Counted as living area: Yes

Heated: Yes
Finished: Yes
Enclosed: Yes
Contiguous: Yes
Permitted: Yes
Wet space: Yes
Addition: No
Conversion: No

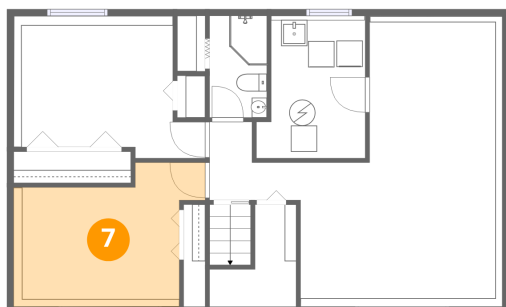
6 Floor 1 - Recreation Room



Dimensions: 15'6" x 22'4"
Area: 286 sq. ft
Counted as living area: Yes

Heated: Yes
Finished: Yes
Enclosed: Yes
Contiguous: Yes
Permitted: Yes
Wet space: No
Addition: No
Conversion: No

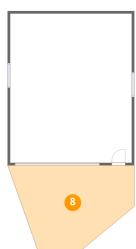
7 Floor 1 - Office



Dimensions: 14'9" x 11'1"
Area: 129 sq. ft
Counted as living area: Yes

Heated: Yes
Finished: Yes
Enclosed: Yes
Contiguous: Yes
Permitted: Yes
Wet space: No
Addition: No
Conversion: No

8 Floor 2 - Carport



Dimensions: 24'8" x 16'8"
Area: 319 sq. ft
Counted as living area: No

Heated: No
Finished: Yes
Enclosed: No
Contiguous: Yes
Permitted: Yes
Wet space: No
Addition: No
Conversion: No

9 Floor 2 - Garage

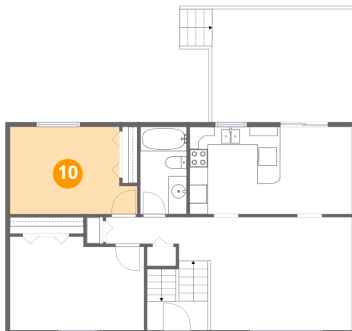


Dimensions: 23'9" x 29'2"
Area: 693 sq. ft
Counted as living area: No

Heated: No
Finished: No
Enclosed: Yes
Contiguous: Yes
Permitted: Yes
Wet space: No
Addition: No
Conversion: No



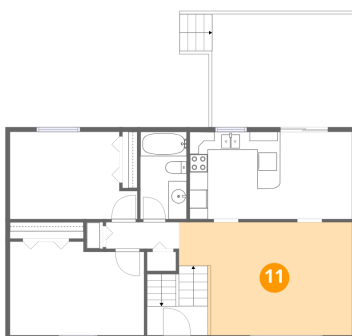
10 Floor 3 - Bedroom



Dimensions: 13'11" x 9'7"
Area: 121 sq. ft
Counted as living area: Yes

Heated: Yes
Finished: Yes
Enclosed: Yes
Contiguous: Yes
Permitted: Yes
Wet space: No
Addition: No
Conversion: No

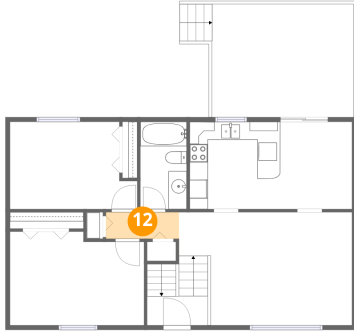
11 Floor 3 - Living Room



Dimensions: 19'0" x 12'5"
Area: 211 sq. ft
Counted as living area: Yes

Heated: Yes
Finished: Yes
Enclosed: Yes
Contiguous: Yes
Permitted: Yes
Wet space: No
Addition: No
Conversion: No

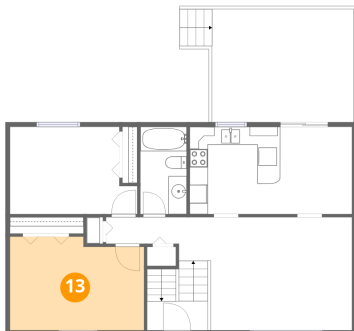
12 Floor 3 - Hall



Dimensions: 8'0" x 2'11"
Area: 23 sq. ft
Counted as living area: Yes

Heated: Yes
Finished: Yes
Enclosed: Yes
Contiguous: Yes
Permitted: Yes
Wet space: No
Addition: No
Conversion: No

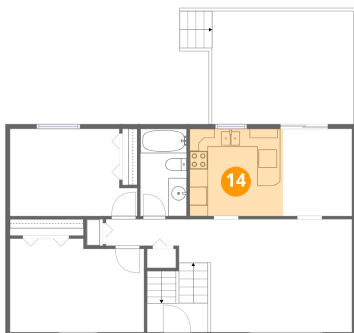
13 Floor 3 - Primary Bedroom



Dimensions: 14'9" x 10'3"
Area: 144 sq. ft
Counted as living area: Yes

Heated: Yes
Finished: Yes
Enclosed: Yes
Contiguous: Yes
Permitted: Yes
Wet space: No
Addition: No
Conversion: No

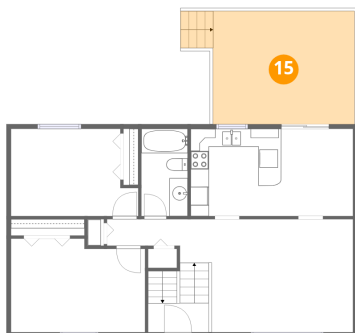
14 Floor 3 - Kitchen



Dimensions: 10'2" x 9'7"
Area: 98 sq. ft
Counted as living area: Yes

Heated: Yes
Finished: Yes
Enclosed: Yes
Contiguous: Yes
Permitted: Yes
Wet space: No
Addition: No
Conversion: No

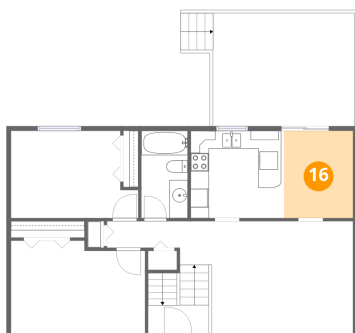
15 Floor 3 - Deck



Dimensions: 15'6" x 12'5"
Area: 207 sq. ft
Counted as living area: No

Heated: No
Finished: No
Enclosed: No
Contiguous: Yes
Permitted: Yes
Wet space: No
Addition: No
Conversion: No

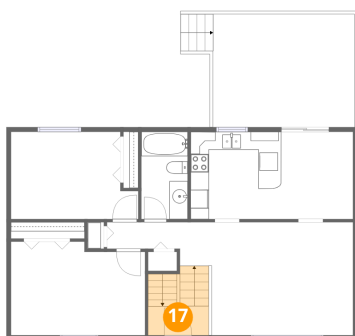
16 Floor 3 - Dining Area



Dimensions: 7'6" x 9'7"
Area: 73 sq. ft
Counted as living area: Yes

Heated: Yes
Finished: Yes
Enclosed: Yes
Contiguous: Yes
Permitted: Yes
Wet space: No
Addition: No
Conversion: No

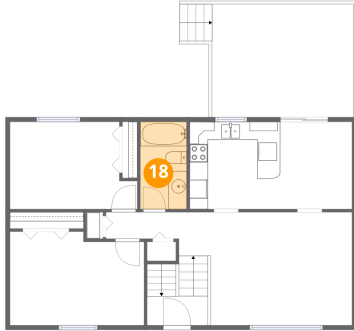
17 Floor 3 - Foyer



Dimensions: 6'8" x 3'2"
Area: 47 sq. ft
Counted as living area: Yes

Heated: Yes
Finished: Yes
Enclosed: Yes
Contiguous: Yes
Permitted: Yes
Wet space: No
Addition: No
Conversion: No

18 Floor 3 - Bath



Dimensions: 5'1" x 9'7"
Area: 49 sq. ft
Counted as living area: Yes

Heated: Yes
Finished: Yes
Enclosed: Yes
Contiguous: Yes
Permitted: Yes
Wet space: Yes
Addition: No
Conversion: No