

Home data report

1303 Laurel St, Whitewood, SD, US



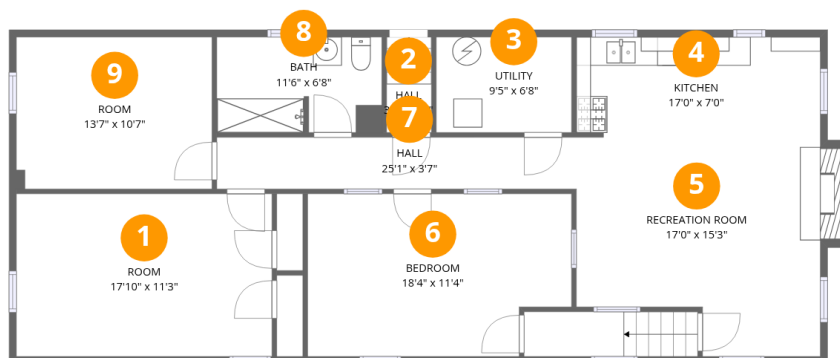
Total Area: 2437 sq. ft

Basement: 1189 sq. ft, 1st Floor: 1248 sq. ft

Excluded: Utility 63 sq. ft, Fireplace 11 sq. ft, Garage 795 sq. ft, Walls: 198 sq. ft

Property summary





Room dimensions

Floor 1 Below grade

Total: 1189sqft Excluded: 74sqft

#		Dimensions	sqft	Counted as living area
1	Room	17'10" x 11'3"	201 sq. ft	Yes
2	Hall	3'2" x 3'5"	11 sq. ft	Yes
3	Utility	9'5" x 6'8"	63 sq. ft	No
4	Kitchen	17'0" x 7'0"	119 sq. ft	Yes
5	Recreation Room	17'0" x 15'3"	260 sq. ft	Yes
6	Bedroom	18'4" x 11'4"	208 sq. ft	Yes
7	Hall	25'1" x 3'7"	90 sq. ft	Yes
8	Bath	11'6" x 6'8"	77 sq. ft	Yes
9	Room	13'7" x 10'7"	144 sq. ft	Yes

Home data report

1303 Laurel St, Whitewood, SD, US



Room dimensions

Floor 2

Total: 1248sqft

Excluded: 795sqft

#		Dimensions	sqft	Counted as living area
10	Primary Bedroom	12'8" x 11'0"	139 sq. ft	Yes
11	Dining Area	9'9" x 12'6"	122 sq. ft	Yes
12	Hall	10'7" x 9'5"	99 sq. ft	Yes
13	Bath	8'2" x 9'0"	73 sq. ft	Yes
14	Bath	5'0" x 9'5"	47 sq. ft	Yes
15	Garage	29'3" x 27'1"	793 sq. ft	No
16	Living Room	26'10" x 22'3"	597 sq. ft	Yes
17	Bedroom	10'8" x 11'0"	117 sq. ft	Yes
18	Hall	11'1" x 3'3"	36 sq. ft	Yes
19	Kitchen	15'5" x 9'9"	150 sq. ft	Yes

1 Floor 1 - Room



Dimensions: 17'10" x 11'3"
Area: 201 sq. ft
Counted as living area: Yes

Heated: Yes
Finished: Yes
Enclosed: Yes
Contiguous: Yes
Permitted: Yes
Wet space: No
Addition: No
Conversion: No

2 Floor 1 - Hall



Dimensions: 3'2" x 3'5"
Area: 11 sq. ft
Counted as living area: Yes

Heated: Yes
Finished: Yes
Enclosed: Yes
Contiguous: Yes
Permitted: Yes
Wet space: No
Addition: No
Conversion: No

3 Floor 1 - Utility



Dimensions: 9'5" x 6'8"
Area: 63 sq. ft
Counted as living area: No

Heated: Yes
Finished: No
Enclosed: Yes
Contiguous: Yes
Permitted: Yes
Wet space: No
Addition: No
Conversion: No

4 Floor 1 - Kitchen



Dimensions: 17'0" x 7'0"
Area: 119 sq. ft
Counted as living area: Yes

Heated: Yes
Finished: Yes
Enclosed: Yes
Contiguous: Yes
Permitted: Yes
Wet space: No
Addition: No
Conversion: No

5 Floor 1 - Recreation Room



Dimensions: 17'0" x 15'3"
Area: 260 sq. ft
Counted as living area: Yes

Heated: Yes
Finished: Yes
Enclosed: Yes
Contiguous: Yes
Permitted: Yes
Wet space: No
Addition: No
Conversion: No

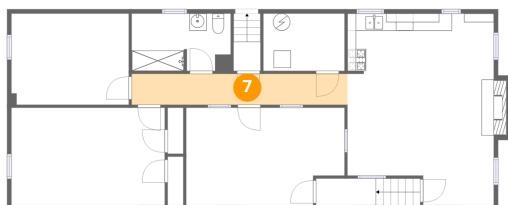
6 Floor 1 - Bedroom



Dimensions: 18'4" x 11'4"
Area: 208 sq. ft
Counted as living area: Yes

Heated: Yes
Finished: Yes
Enclosed: Yes
Contiguous: Yes
Permitted: Yes
Wet space: No
Addition: No
Conversion: No

7 Floor 1 - Hall



Dimensions: 25'1" x 3'7"
Area: 90 sq. ft
Counted as living area: Yes

Heated: Yes
Finished: Yes
Enclosed: Yes
Contiguous: Yes
Permitted: Yes
Wet space: No
Addition: No
Conversion: No

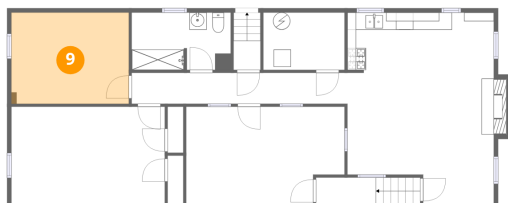
8 Floor 1 - Bath



Dimensions: 11'6" x 6'8"
Area: 77 sq. ft
Counted as living area: Yes

Heated: Yes
Finished: Yes
Enclosed: Yes
Contiguous: Yes
Permitted: Yes
Wet space: Yes
Addition: No
Conversion: No

9 Floor 1 - Room



Dimensions: 13'7" x 10'7"
Area: 144 sq. ft
Counted as living area: Yes

Heated: Yes
Finished: Yes
Enclosed: Yes
Contiguous: Yes
Permitted: Yes
Wet space: No
Addition: No
Conversion: No

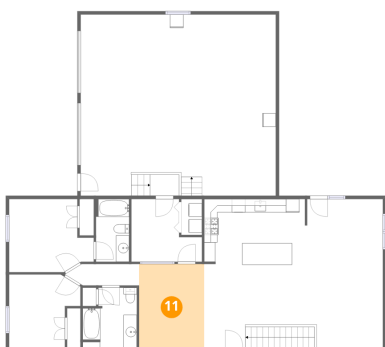
10 Floor 2 - Primary Bedroom



Dimensions: 12'8" x 11'0"
Area: 139 sq. ft
Counted as living area: Yes

Heated: Yes
Finished: Yes
Enclosed: Yes
Contiguous: Yes
Permitted: Yes
Wet space: No
Addition: No
Conversion: No

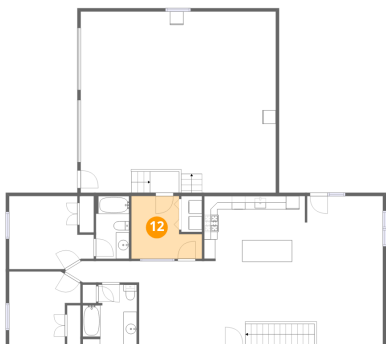
11 Floor 2 - Dining Area



Dimensions: 9'9" x 12'6"
Area: 122 sq. ft
Counted as living area: Yes

Heated: Yes
Finished: Yes
Enclosed: Yes
Contiguous: Yes
Permitted: Yes
Wet space: No
Addition: No
Conversion: No

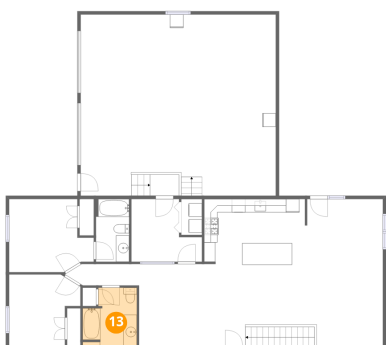
12 Floor 2 - Hall



Dimensions: 10'7" x 9'5"
Area: 99 sq. ft
Counted as living area: Yes

Heated: Yes
Finished: Yes
Enclosed: Yes
Contiguous: Yes
Permitted: Yes
Wet space: No
Addition: No
Conversion: No

13 Floor 2 - Bath



Dimensions: 8'2" x 9'0"
Area: 73 sq. ft
Counted as living area: Yes

Heated: Yes
Finished: Yes
Enclosed: Yes
Contiguous: Yes
Permitted: Yes
Wet space: Yes
Addition: No
Conversion: No

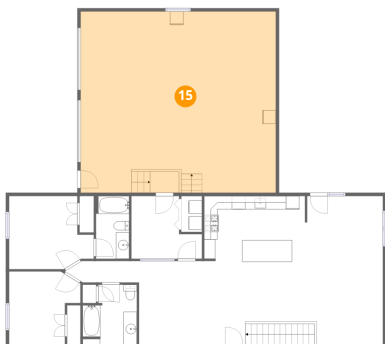
14 Floor 2 - Bath



Dimensions: 5'0" x 9'5"
Area: 47 sq. ft
Counted as living area: Yes

Heated: Yes
Finished: Yes
Enclosed: Yes
Contiguous: Yes
Permitted: Yes
Wet space: Yes
Addition: No
Conversion: No

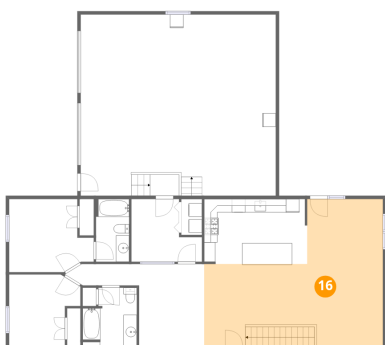
15 Floor 2 - Garage



Dimensions: 29'3" x 27'1"
Area: 793 sq. ft
Counted as living area: No

Heated: No
Finished: No
Enclosed: Yes
Contiguous: Yes
Permitted: Yes
Wet space: No
Addition: No
Conversion: No

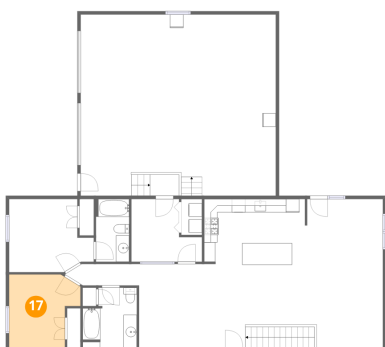
16 Floor 2 - Living Room



Dimensions: 26'10" x 22'3"
Area: 597 sq. ft
Counted as living area: Yes

Heated: Yes
Finished: Yes
Enclosed: Yes
Contiguous: Yes
Permitted: Yes
Wet space: No
Addition: No
Conversion: No

17 Floor 2 - Bedroom



Dimensions: 10'8" x 11'0"
Area: 117 sq. ft
Counted as living area: Yes

Heated: Yes
Finished: Yes
Enclosed: Yes
Contiguous: Yes
Permitted: Yes
Wet space: No
Addition: No
Conversion: No

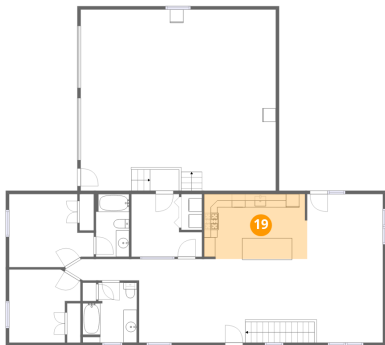
18 Floor 2 - Hall



Dimensions: 11'1" x 3'3"
Area: 36 sq. ft
Counted as living area: Yes

Heated: Yes
Finished: Yes
Enclosed: Yes
Contiguous: Yes
Permitted: Yes
Wet space: No
Addition: No
Conversion: No

19 Floor 2 - Kitchen



Dimensions: 15'5" x 9'9"
Area: 150 sq. ft
Counted as living area: Yes

Heated: Yes
Finished: Yes
Enclosed: Yes
Contiguous: Yes
Permitted: Yes
Wet space: No
Addition: No
Conversion: No