

Home data report

8300 E. Fairmount Drive, Unit NN102, Denver, CO, US, Unit NN102




Total Area: 1691 sq. ft

1st Floor: 921 sq. ft, 2nd Floor: 770 sq. ft

Excluded: Garage 367 sq. ft, Open to below 313 sq. ft, Walls: 167 sq. ft

Property summary

 **2** Floors

 **2** Bedrooms

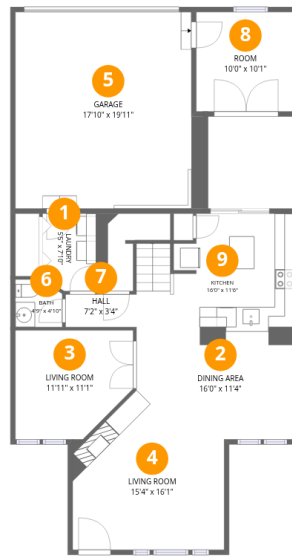
 **2** Bathrooms

Home data report

8300 E. Fairmount Drive, Unit NN102, Denver, CO, US, Unit NN102

 **1**
Half baths

 **1**
Garages



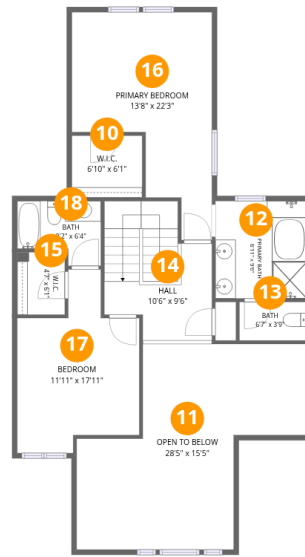
Room dimensions

Floor 1

Total: 921 sqft

Excluded: 367 sqft

#		Dimensions	sqft	Counted as living area
1	Laundry	5'5" x 7'10"	41 sq. ft	Yes
2	Dining Area	16'0" x 11'4"	161 sq. ft	Yes
3	Living Room	11'11" x 11'1"	119 sq. ft	Yes
4	Living Room	15'4" x 16'1"	206 sq. ft	Yes
5	Garage	17'10" x 19'11"	367 sq. ft	No
6	Bath	4'9" x 4'10"	21 sq. ft	Yes
7	Hall	7'2" x 3'4"	24 sq. ft	Yes
8	Room	10'0" x 10'1"	100 sq. ft	Yes
9	Kitchen	16'0" x 11'6"	164 sq. ft	Yes



Room dimensions

Floor 2

Total:770sqft

Excluded: 313sqft

#		Dimensions	sqft	Counted as living area
10	W.I.C.	6'10" x 6'1"	42 sq. ft	Yes
11	Open To Below	28'5" x 15'5"	313 sq. ft	No
12	Primary Bath	8'11" x 9'6"	85 sq. ft	Yes
13	Bath	6'7" x 3'9"	25 sq. ft	Yes
14	Hall	10'6" x 9'6"	122 sq. ft	Yes
15	W.I.C.	4'7" x 6'1"	28 sq. ft	Yes
16	Primary Bedroom	13'8" x 22'3"	214 sq. ft	Yes
17	Bedroom	11'11" x 17'11"	161 sq. ft	Yes
18	Bath	8'2" x 6'4"	44 sq. ft	Yes

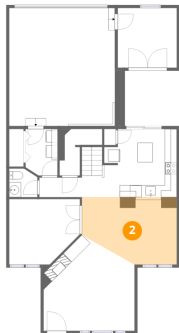
1 Floor 1 - Laundry



Dimensions: 5'5" x 7'10"
Area: 41 sq. ft
Counted as living area: Yes

Heated: Yes
Finished: Yes
Enclosed: Yes
Contiguous: Yes
Permitted: Yes
Wet space: No
Addition: No
Conversion: No

2 Floor 1 - Dining Area



Dimensions: 16'0" x 11'4"
Area: 161 sq. ft
Counted as living area: Yes

Heated: Yes
Finished: Yes
Enclosed: Yes
Contiguous: Yes
Permitted: Yes
Wet space: No
Addition: No
Conversion: No

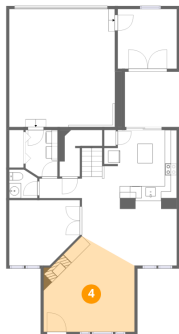
3 Floor 1 - Living Room



Dimensions: 11'11" x 11'1"
Area: 119 sq. ft
Counted as living area: Yes

Heated: Yes
Finished: Yes
Enclosed: Yes
Contiguous: Yes
Permitted: Yes
Wet space: No
Addition: No
Conversion: No

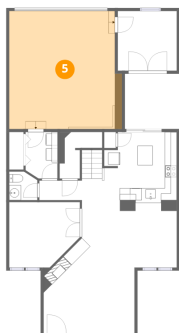
4 Floor 1 - Living Room



Dimensions: 15'4" x 16'1"
Area: 206 sq. ft
Counted as living area: Yes

Heated: Yes
Finished: Yes
Enclosed: Yes
Contiguous: Yes
Permitted: Yes
Wet space: No
Addition: No
Conversion: No

5 Floor 1 - Garage



Dimensions: 17'10" x 19'11"
Area: 367 sq. ft
Counted as living area: No

Heated: No
Finished: No
Enclosed: Yes
Contiguous: Yes
Permitted: Yes
Wet space: No
Addition: No
Conversion: No

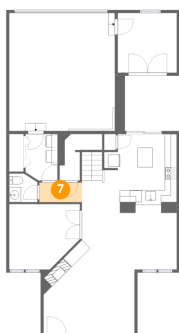
6 Floor 1 - Bath



Dimensions: 4'9" x 4'10"
Area: 21 sq. ft
Counted as living area: Yes

Heated: Yes
Finished: Yes
Enclosed: Yes
Contiguous: Yes
Permitted: Yes
Wet space: Yes
Addition: No
Conversion: No

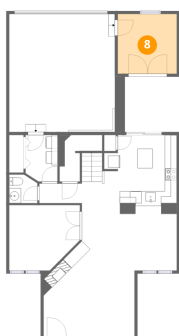
7 Floor 1 - Hall



Dimensions: 7'2" x 3'4"
Area: 24 sq. ft
Counted as living area: Yes

Heated: Yes
Finished: Yes
Enclosed: Yes
Contiguous: Yes
Permitted: Yes
Wet space: No
Addition: No
Conversion: No

8 Floor 1 - Room



Dimensions: 10'0" x 10'1"
Area: 100 sq. ft
Counted as living area: No

Heated: Yes
Finished: Yes
Enclosed: Yes
Contiguous: No
Permitted: Yes
Wet space: No
Addition: No
Conversion: No

9 Floor 1 - Kitchen



Dimensions: 16'0" x 11'6"
Area: 164 sq. ft
Counted as living area: Yes

Heated: Yes
Finished: Yes
Enclosed: Yes
Contiguous: Yes
Permitted: Yes
Wet space: No
Addition: No
Conversion: No

10 Floor 2 - W.I.C.



Dimensions: 6'10" x 6'1"
Area: 42 sq. ft
Counted as living area: Yes

Heated: Yes
Finished: Yes
Enclosed: Yes
Contiguous: Yes
Permitted: Yes
Wet space: No
Addition: No
Conversion: No

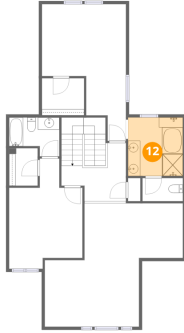
11 Floor 2 - Open To Below



Dimensions: 28'5" x 15'5"
Area: 313 sq. ft
Counted as living area: No

Heated: No
Finished: No
Enclosed: No
Contiguous: Yes
Permitted: No
Wet space: No
Addition: No
Conversion: No

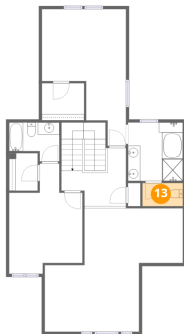
12 Floor 2 - Primary Bath



Dimensions: 8'11" x 9'6"
Area: 85 sq. ft
Counted as living area: Yes

Heated: Yes
Finished: Yes
Enclosed: Yes
Contiguous: Yes
Permitted: Yes
Wet space: Yes
Addition: No
Conversion: No

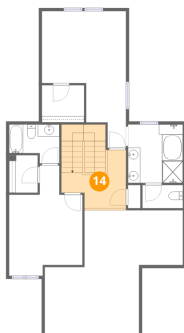
13 Floor 2 - Bath



Dimensions: 6'7" x 3'9"
Area: 25 sq. ft
Counted as living area: Yes

Heated: Yes
Finished: Yes
Enclosed: Yes
Contiguous: Yes
Permitted: Yes
Wet space: No
Addition: No
Conversion: No

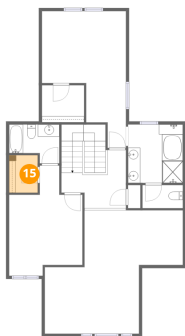
14 Floor 2 - Hall



Dimensions: 10'6" x 9'6"
Area: 122 sq. ft
Counted as living area: Yes

Heated: Yes
Finished: Yes
Enclosed: Yes
Contiguous: Yes
Permitted: Yes
Wet space: No
Addition: No
Conversion: No

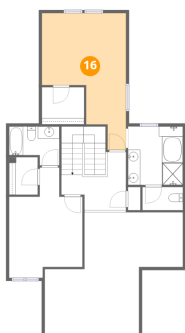
15 Floor 2 - W.I.C.



Dimensions: 4'7" x 6'1"
Area: 28 sq. ft
Counted as living area: Yes

Heated: Yes
Finished: Yes
Enclosed: Yes
Contiguous: Yes
Permitted: Yes
Wet space: No
Addition: No
Conversion: No

16 Floor 2 - Primary Bedroom



Dimensions: 13'8" x 22'3"
Area: 214 sq. ft
Counted as living area: Yes

Heated: Yes
Finished: Yes
Enclosed: Yes
Contiguous: Yes
Permitted: Yes
Wet space: No
Addition: No
Conversion: No

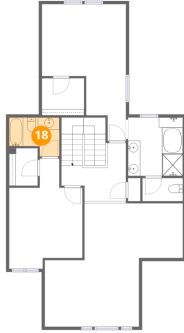
17 Floor 2 - Bedroom



Dimensions: 11'11" x 17'11"
Area: 161 sq. ft
Counted as living area: Yes

Heated: Yes
Finished: Yes
Enclosed: Yes
Contiguous: Yes
Permitted: Yes
Wet space: No
Addition: No
Conversion: No

18 Floor 2 - Bath



Dimensions: 8'2" x 6'4"
Area: 44 sq. ft
Counted as living area: Yes

Heated: Yes
Finished: Yes
Enclosed: Yes
Contiguous: Yes
Permitted: Yes
Wet space: Yes
Addition: No
Conversion: No