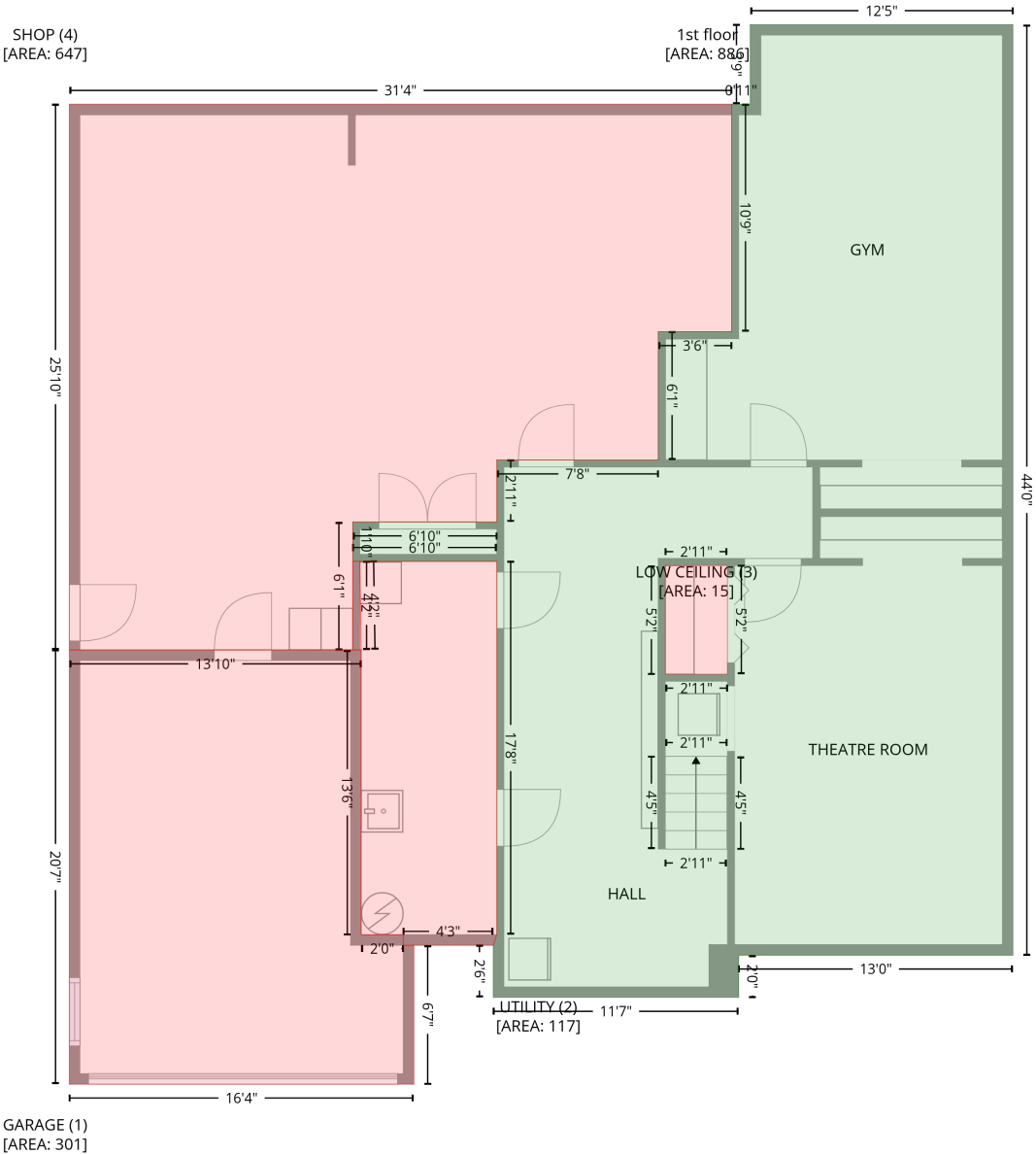


6324 Pumpnickel Ln, Monroe, NC, US

Gross Living Area: 4433 sq. ft

Level 1



6324 Pumpnickel Ln, Monroe, NC, US

Gross Living Area: 4433 sq. ft

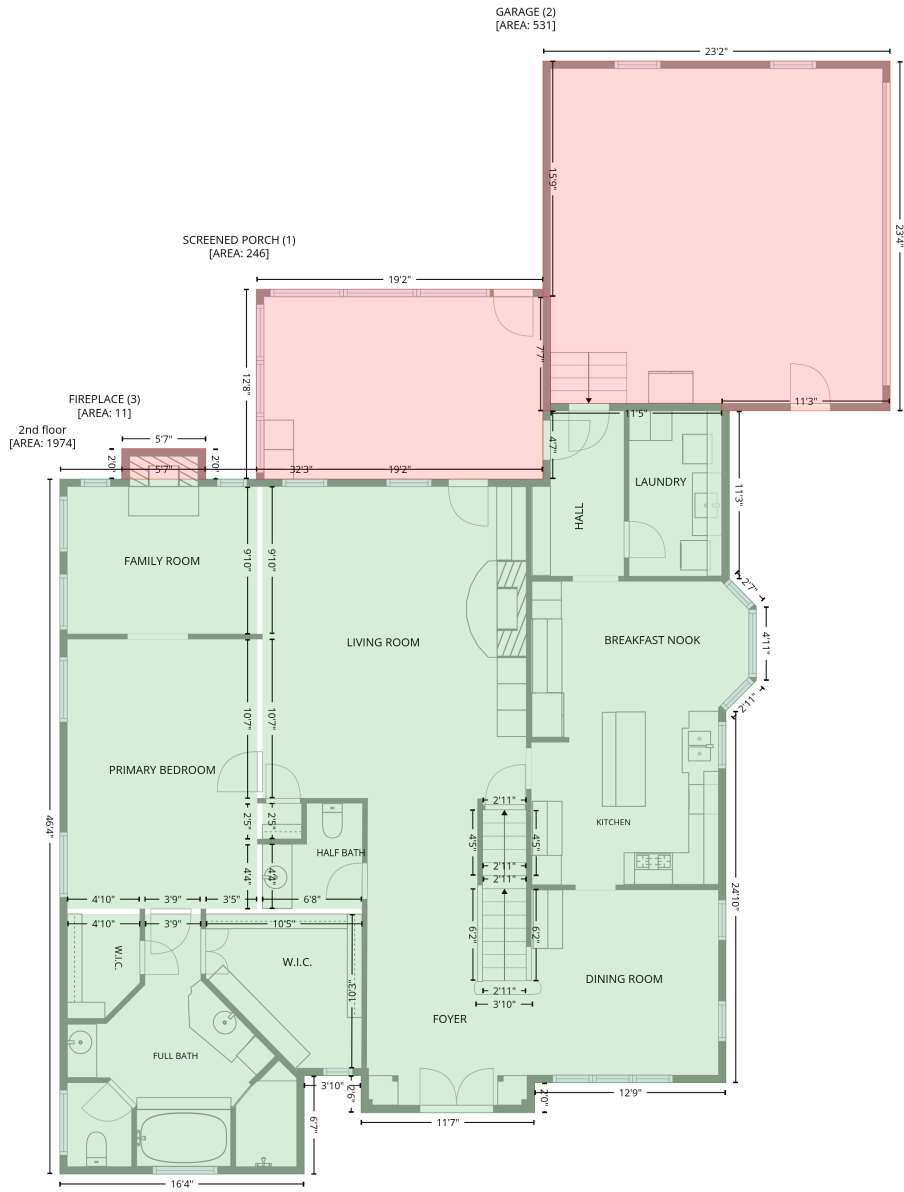
Level 1

Space	Area (sq. ft)	Calculation <small>Coordinate Polygon Area Algorithm using inches</small>
1st floor (Living area)	886	$-\left((540.6 + 540.6) * (290.1 - 818.5) + (540.6 + 384.6) * (818.5 - 818.5) + (384.6 + 384.6) * (818.5 - 842.5) + (384.6 + 245.2) * (842.5 - 842.5) + (245.2 + 245.2) * (842.5 - 812.9) + (245.2 + 247.2) * (812.9 - 806.9) + (247.2 + 247.2) * (806.9 - 594.9) + (247.2 + 165.3) * (594.9 - 594.9) + (165.3 + 165.3) * (594.9 - 572.5) + (165.3 + 247.2) * (572.5 - 572.5) + (247.2 + 247.2) * (572.5 - 537.3) + (247.2 + 338.9) * (537.3 - 537.3) + (338.9 + 338.9) * (537.3 - 464.5) + (338.9 + 380.6) * (464.5 - 464.5) + (380.6 + 380.6) * (464.5 - 335.3) + (380.6 + 391.2) * (335.3 - 335.3) + (391.2 + 391.2) * (335.3 - 290.1) + (391.2 + 540.6) * (290.1 - 290.1)\right) * 0.5 * 0.00694 + -\left((378.3 + 342.9) * (597.2 - 597.2) + (342.9 + 342.9) * (597.2 - 659) + (342.9 + 378.3) * (659 - 659) + (378.3 + 378.3) * (659 - 597.2)\right) * 0.5 * 0.00694$
GARAGE (Non-living area)	301	$-\left((170.1 + 170.1) * (645.2 - 806.9) + (170.1 + 194) * (806.9 - 806.9) + (194 + 194) * (806.9 - 812.9) + (194 + 200) * (812.9 - 812.9) + (200 + 200) * (812.9 - 891.7) + (200 + 4.2) * (891.7 - 891.7) + (4.2 + 4.2) * (891.7 - 645.2) + (4.2 + 170.1) * (645.2 - 645.2)\right) * 0.5 * 0.00694$
UTILITY (Non-living area)	117	$-\left((247.2 + 247.2) * (594.9 - 806.9) + (247.2 + 245.2) * (806.9 - 812.9) + (245.2 + 194) * (812.9 - 812.9) + (194 + 194) * (812.9 - 806.9) + (194 + 170.1) * (806.9 - 806.9) + (170.1 + 170.1) * (806.9 - 645.2) + (170.1 + 169.3) * (645.2 - 594.9) + (169.3 + 247.2) * (594.9 - 594.9)\right) * 0.5 * 0.00694 + -\left((169.3 + 170.1) * (594.9 - 645.2) + (170.1 + 165.3) * (645.2 - 645.2) + (165.3 + 165.3) * (645.2 - 594.9) + (165.3 + 169.3) * (594.9 - 594.9)\right) * 0.5 * 0.00694$
LOW CEILING (Non-living area)	15	$-\left((378.3 + 378.3) * (597.2 - 659) + (378.3 + 342.9) * (659 - 659) + (342.9 + 342.9) * (659 - 597.2) + (342.9 + 378.3) * (597.2 - 597.2)\right) * 0.5 * 0.00694$
SHOP (Non-living area)	647	$-\left((380.6 + 380.6) * (335.3 - 464.5) + (380.6 + 338.9) * (464.5 - 464.5) + (338.9 + 338.9) * (464.5 - 537.3) + (338.9 + 247.2) * (537.3 - 537.3) + (247.2 + 247.2) * (537.3 - 572.5) + (247.2 + 165.3) * (572.5 - 572.5) + (165.3 + 165.3) * (572.5 - 645.2) + (165.3 + 4.2) * (645.2 - 645.2) + (4.2 + 4.2) * (645.2 - 335.3) + (4.2 + 380.6) * (335.3 - 335.3)\right) * 0.5 * 0.00694$

6324 Pumpnickel Ln, Monroe, NC, US

Gross Living Area: 4433 sq. ft

Level 2



6324 Pumpnickel Ln, Monroe, NC, US

Gross Living Area: 4433 sq. ft

Level 2

Space	Area (sq. ft)	Calculation <small>Coordinate Polygon Area Algorithm using inches</small>
2nd floor (Living area)	1974	$ \begin{aligned} & -((534.6 + 534.6) * (274.7 - 280.7) + (534.6 + 540.6) * (280.7 - 280.7) + (540.6 + 540.6) * (280.7 - 415.2) + (540.6 + 562.2) * (415.2 - 437.3) + (562.2 + 562.2) * (437.3 - 496.5) + (562.2 + 537.8) * \\ & (496.5 - 520.9) + (537.8 + 537.8) * (520.9 - 818.5) + (537.8 + 384.6) * (818.5 - 818.5) + (384.6 + 384.6) * (818.5 - 842.5) + (384.6 + 245.6) * (842.5 - 842.5) + (245.6 + 245.6) * (842.5 - 812.9) + \\ & (245.6 + 200) * (812.9 - 812.9) + (200 + 200) * (812.9 - 891.7) + (200 + 4.2) * (891.7 - 891.7) + \\ & (4.2 + 4.2) * (891.7 - 335.3) + (4.2 + 391.2) * (335.3 - 335.3) + (391.2 + 391.2) * (335.3 - 280.7) + \\ & (391.2 + 397.2) * (280.7 - 280.7) + (397.2 + 397.2) * (280.7 - 274.7) + (397.2 + 534.6) * (274.7 - 274.7) * 0.5 * 0.00694 + -((166.5 + 162.5) * (627.6 - 627.6) + (162.5 + 162.5) * (627.6 - 679.5) + \\ & (162.5 + 121.3) * (679.5 - 679.5) + (121.3 + 121.3) * (679.5 - 683.5) + (121.3 + 246.4) * (683.5 - 683.5) + (246.4 + 246) * (683.5 - 806.9) + (246 + 246) * (806.9 - 806.8) + (246 + 246.5) * (806.8 - 679.5) + (246.5 + 246.4) * (679.5 - 679.5) + (246.4 + 166.5) * (679.5 - 679.5) + (166.5 + 166.5) * \\ & (679.5 - 627.6) * 0.5 * 0.00694 + -((68.4 + 10.2) * (679.5 - 679.5) + (10.2 + 10.2) * (679.5 - 683.5) + (10.2 + 68.4) * (683.5 - 683.5) + (68.4 + 68.4) * (683.5 - 679.5) * 0.5 * 0.00694 + - \\ & ((117.3 + 72.4) * (679.5 - 679.5) + (72.4 + 72.4) * (679.5 - 683.5) + (72.4 + 117.3) * (683.5 - 683.5) + (117.3 + 117.3) * (683.5 - 679.5) * 0.5 * 0.00694 + -((166.5 + 162.5) * (594.9 - 594.9) + \\ & (162.5 + 162.5) * (594.9 - 623.6) + (162.5 + 166.5) * (623.6 - 623.6) + (166.5 + 166.5) * (623.6 - 594.9) * 0.5 * 0.00694 + -((166.5 + 162.5) * (463.4 - 463.4) + (162.5 + 162.5) * (463.4 - 590.9) + \\ & (162.5 + 166.5) * (590.9 - 590.9) + (166.5 + 166.5) * (590.9 - 463.4) * 0.5 * 0.00694 + -((166.5 + 162.5) * (341.3 - 341.3) + (162.5 + 162.5) * (341.3 - 459.4) + (162.5 + 166.5) * (459.4 - 459.4) + \\ & (166.5 + 166.5) * (459.4 - 341.3)) * 0.5 * 0.00694 \end{aligned} $
SCREENED PORCH (Non-living area)	246	$ \begin{aligned} & -((391.2 + 391.2) * (183.4 - 189.4) + (391.2 + 397.2) * (189.4 - 189.4) + (397.2 + 397.2) * (189.4 - 280.7) + (397.2 + 391.2) * (280.7 - 280.7) + (391.2 + 391.2) * (280.7 - 335.3) + (391.2 + 161.7) * \\ & (335.3 - 335.3) + (161.7 + 161.7) * (335.3 - 183.4) + (161.7 + 391.2) * (183.4 - 183.4)) * 0.5 * 0.00694 \end{aligned} $
GARAGE (Non-living area)	531	$ \begin{aligned} & -((669.3 + 669.3) * (0.7 - 280.7) + (669.3 + 534.6) * (280.7 - 280.7) + (534.6 + 534.6) * (280.7 - 274.7) + (534.6 + 397.2) * (274.7 - 274.7) + (397.2 + 397.2) * (274.7 - 189.4) + (397.2 + 391.2) * \\ & (189.4 - 189.4) + (391.2 + 391.2) * (189.4 - 0.7) + (391.2 + 669.3) * (0.7 - 0.7)) * 0.5 * 0.00694 \end{aligned} $
FIREPLACE (Non-living area)	11	$ \begin{aligned} & -((121.3 + 121.3) * (310.9 - 335.3) + (121.3 + 53.8) * (335.3 - 335.3) + (53.8 + 53.8) * (335.3 - 310.9) + (53.8 + 121.3) * (310.9 - 310.9)) * 0.5 * 0.00694 \end{aligned} $

6324 Pumpnickel Ln, Monroe, NC, US

Gross Living Area: 4433 sq. ft

Level 3



Space	Area (sq. ft)	Calculation
3rd floor (Living area)	1573	Coordinate Polygon Area Algorithm using inches $-((539.4 + 539.4) * (274.7 - 818.5) + (539.4 + 378.3) * (818.5 - 818.5) + (378.3 + 378.3) * (818.5 - 591) + (378.3 + 251.6) * (591 - 591) + (251.6 + 251.6) * (591 - 818.5) + (251.6 + 199.6) * (818.5 - 818.5) + (199.6 + 120.9) * (818.5 - 739.4) + (120.9 + 3.8) * (739.4 - 739.4) + (3.8 + 3.8) * (739.4 - 335.3) + (3.8 + 391.2) * (335.3 - 335.3) + (391.2 + 391.2) * (335.3 - 274.7) + (391.2 + 539.4) * (274.7 - 274.7)) * 0.5 + 0.00694$
OPEN TO BELOW (Non-living area)	200	$-((378.3 + 378.3) * (591 - 818.5) + (378.3 + 251.6) * (818.5 - 818.5) + (251.6 + 251.6) * (818.5 - 591) + (251.6 + 378.3) * (591 - 591)) * 0.5 + 0.00694$