

Home data report

255 Pine Hills Drive, Fincastle, Virginia 24090, United States



Total Area: 2724 sq. ft


1st Floor: 2724 sq. ft

Excluded: Patio 229 sq. ft, Covered patio 193 sq. ft, Porch 169 sq. ft, Walls: 123 sq. ft

Property summary

 **1** Floors

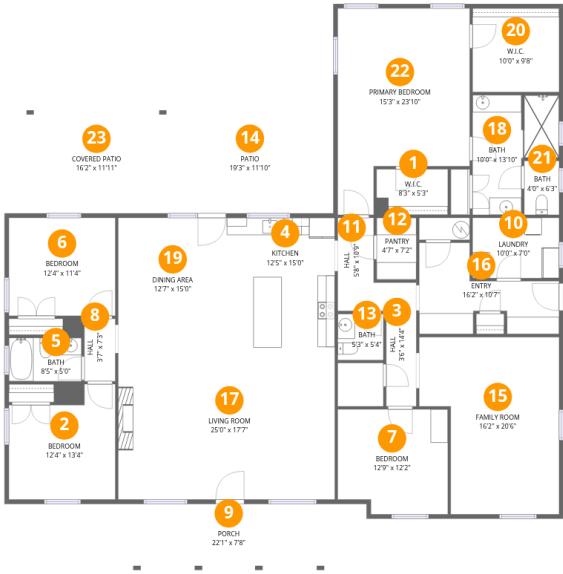
 **4** Bedrooms

 **2** Bathrooms

 **1** Half baths

Home data report

255 Pine Hills Drive, Fincastle, Virginia 24090, United States



Room dimensions

Floor 1

Total:2724sqft Excluded: 591sqft

#		Dimensions	sqft	Counted as living area
1	W.I.C.	8'3" x 5'3"	43 sq. ft	Yes
2	Bedroom	12'4" x 13'4"	143 sq. ft	Yes
3	Hall	3'6" x 14'4"	50 sq. ft	Yes
4	Kitchen	12'5" x 15'0"	186 sq. ft	Yes
5	Bath	8'5" x 5'0"	42 sq. ft	Yes
6	Bedroom	12'4" x 11'4"	139 sq. ft	Yes
7	Bedroom	12'9" x 12'2"	148 sq. ft	Yes
8	Hall	3'7" x 7'3"	26 sq. ft	Yes
9	Porch	22'1" x 7'8"	169 sq. ft	No
10	Laundry	10'0" x 7'0"	70 sq. ft	Yes
11	Hall	5'8" x 10'9"	50 sq. ft	Yes

Home data report

255 Pine Hills Drive, Fincastle, Virginia 24090, United States

#		Dimensions	sqft	Counted as living area
12	Pantry	4'7" x 7'2"	33 sq. ft	Yes
13	Bath	5'3" x 5'4"	28 sq. ft	Yes
14	Patio	19'3" x 11'10"	229 sq. ft	No
15	Family Room	16'2" x 20'6"	285 sq. ft	Yes
16	Entry	16'2" x 10'7"	115 sq. ft	Yes
17	Living Room	25'0" x 17'7"	440 sq. ft	Yes
18	Bath	10'0" x 13'10"	108 sq. ft	Yes
19	Dining Area	12'7" x 15'0"	188 sq. ft	Yes
20	W.I.C.	10'0" x 9'8"	97 sq. ft	Yes
21	Bath	4'0" x 6'3"	25 sq. ft	Yes
22	Primary Bedroom	15'3" x 23'10"	301 sq. ft	Yes
23	Covered Patio	16'2" x 11'11"	193 sq. ft	No

1 Floor 1 - W.I.C.



Dimensions: 8'3" x 5'3"
Area: 43 sq. ft
Counted as living area: Yes

Heated: Yes
Finished: Yes
Enclosed: Yes
Contiguous: Yes
Permitted: Yes
Wet space: No
Addition: No
Conversion: No

2 Floor 1 - Bedroom



Dimensions: 12'4" x 13'4"
Area: 143 sq. ft
Counted as living area: Yes

Heated: Yes
Finished: Yes
Enclosed: Yes
Contiguous: Yes
Permitted: Yes
Wet space: No
Addition: No
Conversion: No

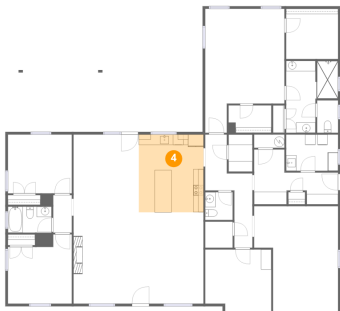
3 Floor 1 - Hall



Dimensions: 3'6" x 14'4"
Area: 50 sq. ft
Counted as living area: Yes

Heated: Yes
Finished: Yes
Enclosed: Yes
Contiguous: Yes
Permitted: Yes
Wet space: No
Addition: No
Conversion: No

4 Floor 1 - Kitchen



Dimensions: 12'5" x 15'0"
Area: 186 sq. ft
Counted as living area: Yes

Heated: Yes
Finished: Yes
Enclosed: Yes
Contiguous: Yes
Permitted: Yes
Wet space: No
Addition: No
Conversion: No

5 Floor 1 - Bath



Dimensions: 8'5" x 5'0"
Area: 42 sq. ft
Counted as living area: Yes

Heated: Yes
Finished: Yes
Enclosed: Yes
Contiguous: Yes
Permitted: Yes
Wet space: Yes
Addition: No
Conversion: No

6 Floor 1 - Bedroom



Dimensions: 12'4" x 11'4"
Area: 139 sq. ft
Counted as living area: Yes

Heated: Yes
Finished: Yes
Enclosed: Yes
Contiguous: Yes
Permitted: Yes
Wet space: No
Addition: No
Conversion: No

7 Floor 1 - Bedroom



Dimensions: 12'9" x 12'2"
Area: 148 sq. ft
Counted as living area: Yes

Heated: Yes
Finished: Yes
Enclosed: Yes
Contiguous: Yes
Permitted: Yes
Wet space: No
Addition: No
Conversion: No

8 Floor 1 - Hall



Dimensions: 3'7" x 7'3"
Area: 26 sq. ft
Counted as living area: Yes

Heated: Yes
Finished: Yes
Enclosed: Yes
Contiguous: Yes
Permitted: Yes
Wet space: No
Addition: No
Conversion: No

9 Floor 1 - Porch



Dimensions: 22'1" x 7'8"
Area: 169 sq. ft
Counted as living area: No

Heated: No
Finished: No
Enclosed: No
Contiguous: Yes
Permitted: Yes
Wet space: No
Addition: No
Conversion: No

10 Floor 1 - Laundry



Dimensions: 10'0" x 7'0"
Area: 70 sq. ft
Counted as living area: Yes

Heated: Yes
Finished: Yes
Enclosed: Yes
Contiguous: Yes
Permitted: Yes
Wet space: No
Addition: No
Conversion: No

11 Floor 1 - Hall



Dimensions: 5'8" x 10'9"
Area: 50 sq. ft
Counted as living area: Yes

Heated: Yes
Finished: Yes
Enclosed: Yes
Contiguous: Yes
Permitted: Yes
Wet space: No
Addition: No
Conversion: No

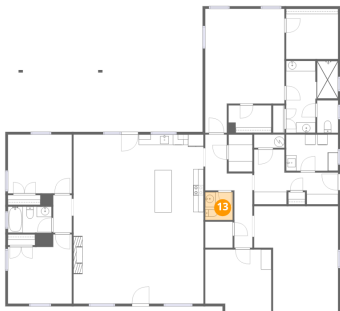
12 Floor 1 - Pantry



Dimensions: 4'7" x 7'2"
Area: 33 sq. ft
Counted as living area: Yes

Heated: Yes
Finished: Yes
Enclosed: Yes
Contiguous: Yes
Permitted: Yes
Wet space: No
Addition: No
Conversion: No

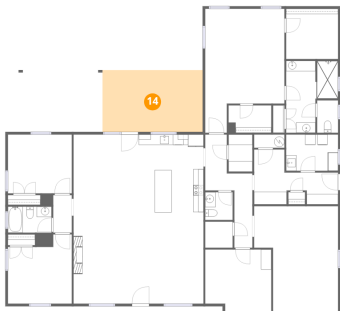
13 Floor 1 - Bath



Dimensions: 5'3" x 5'4"
Area: 28 sq. ft
Counted as living area: Yes

Heated: Yes
Finished: Yes
Enclosed: Yes
Contiguous: Yes
Permitted: Yes
Wet space: Yes
Addition: No
Conversion: No

14 Floor 1 - Patio



Dimensions: 19'3" x 11'10"
Area: 229 sq. ft
Counted as living area: No

Heated: No
Finished: No
Enclosed: No
Contiguous: Yes
Permitted: Yes
Wet space: No
Addition: No
Conversion: No

15 Floor 1 - Family Room



Dimensions: 16'2" x 20'6"
Area: 285 sq. ft
Counted as living area: Yes

Heated: Yes
Finished: Yes
Enclosed: Yes
Contiguous: Yes
Permitted: Yes
Wet space: No
Addition: No
Conversion: No

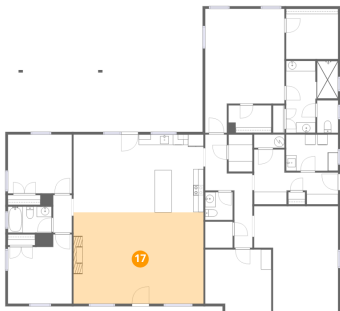
16 Floor 1 - Entry



Dimensions: 16'2" x 10'7"
Area: 115 sq. ft
Counted as living area: Yes

Heated: Yes
Finished: Yes
Enclosed: Yes
Contiguous: Yes
Permitted: Yes
Wet space: No
Addition: No
Conversion: No

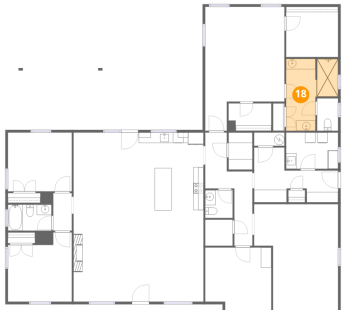
17 Floor 1 - Living Room



Dimensions: 25'0" x 17'7"
Area: 440 sq. ft
Counted as living area: Yes

Heated: Yes
Finished: Yes
Enclosed: Yes
Contiguous: Yes
Permitted: Yes
Wet space: No
Addition: No
Conversion: No

18 Floor 1 - Bath



Dimensions: 10'0" x 13'10"
Area: 108 sq. ft
Counted as living area: Yes

Heated: Yes
Finished: Yes
Enclosed: Yes
Contiguous: Yes
Permitted: Yes
Wet space: Yes
Addition: No
Conversion: No

19 Floor 1 - Dining Area



Dimensions: 12'7" x 15'0"
Area: 188 sq. ft
Counted as living area: Yes

Heated: Yes
Finished: Yes
Enclosed: Yes
Contiguous: Yes
Permitted: Yes
Wet space: No
Addition: No
Conversion: No

20 Floor 1 - W.I.C.



Dimensions: 10'0" x 9'8"
Area: 97 sq. ft
Counted as living area: Yes

Heated: Yes
Finished: Yes
Enclosed: Yes
Contiguous: Yes
Permitted: Yes
Wet space: No
Addition: No
Conversion: No

21 Floor 1 - Bath



Dimensions: 4'0" x 6'3"
Area: 25 sq. ft
Counted as living area: Yes

Heated: Yes
Finished: Yes
Enclosed: Yes
Contiguous: Yes
Permitted: Yes
Wet space: Yes
Addition: No
Conversion: No

22 Floor 1 - Primary Bedroom



Dimensions: 15'3" x 23'10"
Area: 301 sq. ft
Counted as living area: Yes

Heated: Yes
Finished: Yes
Enclosed: Yes
Contiguous: Yes
Permitted: Yes
Wet space: No
Addition: No
Conversion: No

23 Floor 1 - Covered Patio



Dimensions: 16'2" x 11'11"
Area: 193 sq. ft
Counted as living area: No

Heated: No
Finished: No
Enclosed: No
Contiguous: Yes
Permitted: Yes
Wet space: No
Addition: No
Conversion: No