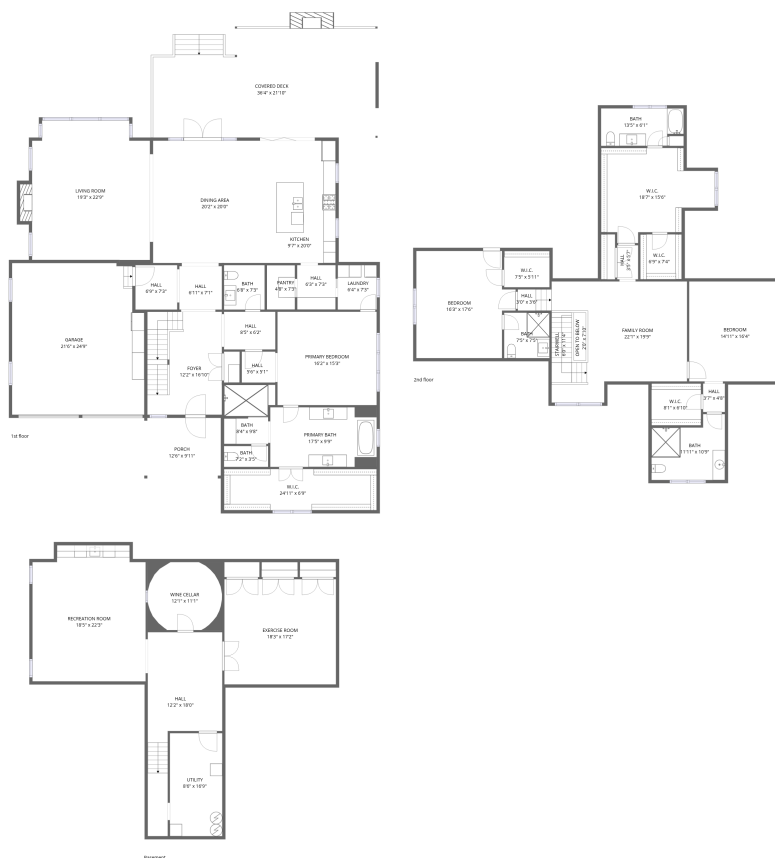


Home data report

# 4240 Paces Ferry Rd SE, Atlanta, GA, US

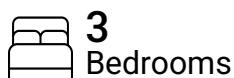


## Total Area: 4953 sq. ft

Basement: 1036 sq. ft, 1st Floor: 2362 sq. ft, 2nd Floor: 1555 sq. ft

Excluded: Utility 144 sq. ft, Wine cellar 135 sq. ft, Garage 518 sq. ft, Covered deck 636 sq. ft, Porch 124 sq. ft, Fireplace 14 sq. ft, Stairwell 49 sq. ft, Open to below 23 sq. ft, Walls: 379 sq. ft

## Property summary

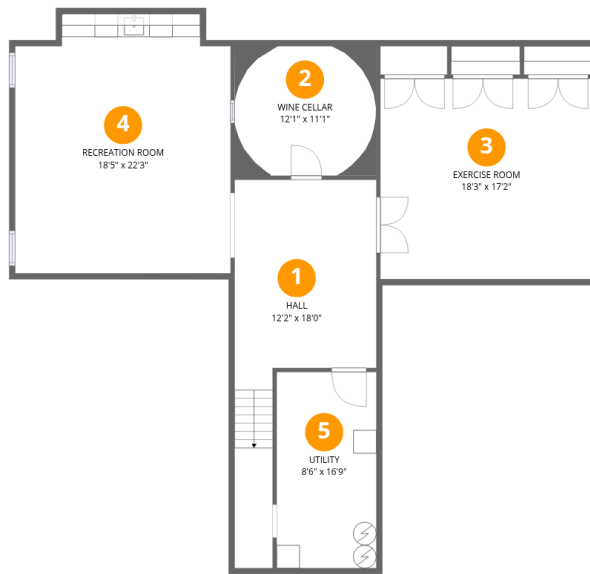


Home data report

# 4240 Paces Ferry Rd SE,Atlanta,GA,US

 **1**  
Half baths

 **1**  
Garages



## Room dimensions

Floor 1 Below grade

Total:1036sqft

Excluded: 279sqft

#		Dimensions	sqft	Counted as living area
1	Hall	12'2" x 18'0"	219 sq. ft	Yes
2	Wine Cellar	12'1" x 11'1"	133 sq. ft	No
3	Exercise Room	18'3" x 17'2"	313 sq. ft	Yes
4	Recreation Room	18'5" x 22'3"	410 sq. ft	Yes
5	Utility	8'6" x 16'9"	143 sq. ft	No

# Home data report

## 4240 Paces Ferry Rd SE, Atlanta, GA, US



### Room dimensions

Floor 2

Total: 2362 sqft

Excluded: 1292 sqft

#		Dimensions	sqft	Counted as living area
6	Hall	8'5" x 6'2"	52 sq. ft	Yes
7	Porch	12'6" x 9'11"	123 sq. ft	No
8	Kitchen	9'7" x 20'0"	192 sq. ft	Yes
9	Bath	8'4" x 9'8"	81 sq. ft	Yes
10	Hall	6'11" x 7'1"	49 sq. ft	Yes
11	Primary Bedroom	16'2" x 15'3"	247 sq. ft	Yes
12	Foyer	12'2" x 16'10"	205 sq. ft	Yes
13	Bath	6'8" x 7'3"	48 sq. ft	Yes
14	Covered Deck	36'4" x 21'10"	792 sq. ft	No
15	Hall	5'6" x 5'1"	28 sq. ft	Yes
16	Dining Area	20'2" x 20'0"	403 sq. ft	Yes

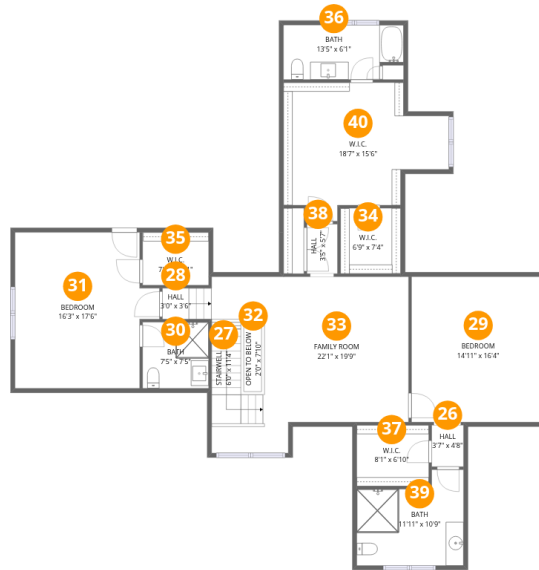
Home data report

**4240 Paces Ferry Rd SE,Atlanta,GA,US**

#		Dimensions	sqft	Counted as living area
17	Primary Bath	17'5" x 9'9"	169 sq. ft	Yes
18	Hall	6'3" x 7'3"	46 sq. ft	Yes
19	Pantry	4'8" x 7'3"	34 sq. ft	Yes
20	Garage	21'6" x 24'9"	532 sq. ft	No
21	Hall	6'9" x 7'3"	49 sq. ft	Yes
22	Living Room	19'3" x 22'9"	438 sq. ft	Yes
23	Laundry	6'4" x 7'3"	46 sq. ft	Yes
24	Bath	7'2" x 3'5"	25 sq. ft	Yes
25	W.I.C.	24'11" x 6'9"	168 sq. ft	Yes

Home data report

4240 Paces Ferry Rd SE,Atlanta,GA,US



Room dimensions

Floor 3

Total:1555sqft Excluded: 72sqft

#		Dimensions	sqft	Counted as living area
26	Hall	3'7" x 4'8"	17 sq. ft	Yes
27	Stairwell	6'0" x 11'4"	68 sq. ft	No
28	Hall	3'0" x 3'6"	10 sq. ft	Yes
29	Bedroom	14'11" x 16'4"	244 sq. ft	Yes
30	Bath	7'5" x 7'5"	55 sq. ft	Yes
31	Bedroom	16'3" x 17'6"	284 sq. ft	Yes
32	Open To Below	2'0" x 7'10"	16 sq. ft	No
33	Family Room	22'1" x 19'9"	437 sq. ft	Yes
34	W.I.C.	6'9" x 7'4"	50 sq. ft	Yes
35	W.I.C.	7'5" x 5'11"	44 sq. ft	Yes
36	Bath	13'5" x 6'1"	82 sq. ft	Yes

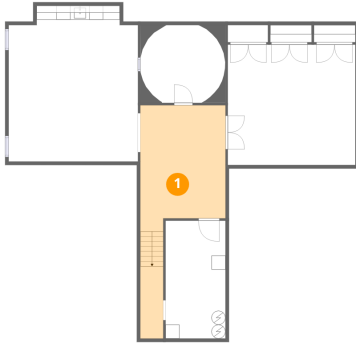
Home data report

**4240 Paces Ferry Rd SE,Atlanta,GA,US**

#		Dimensions	sqft	Counted as living area
37	W.I.C.	8'1" x 6'10"	55 sq. ft	Yes
38	Hall	3'5" x 5'7"	19 sq. ft	Yes
39	Bath	11'11" x 10'9"	129 sq. ft	Yes
40	W.I.C.	18'7" x 15'6"	288 sq. ft	Yes

**1** Floor 1 - Hall

---

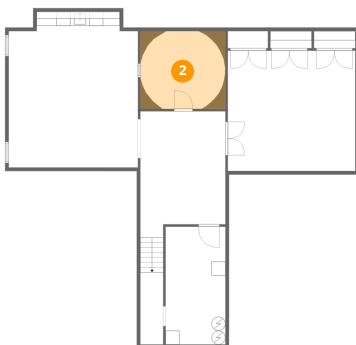


Dimensions: 12'2" x 18'0"  
Area: 219 sq. ft  
Counted as living area: Yes

Heated: Yes  
Finished: Yes  
Enclosed: Yes  
Contiguous: Yes  
Permitted: Yes  
Wet space: No  
Addition: No  
Conversion: No

**2** Floor 1 - Wine Cellar

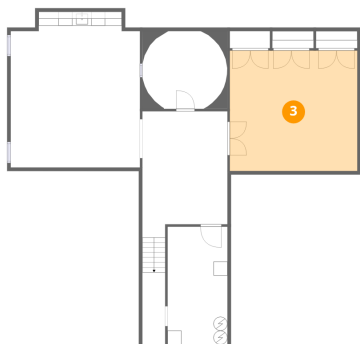
---



Dimensions: 12'1" x 11'1"  
Area: 133 sq. ft  
Counted as living area: No

Heated: No  
Finished: No  
Enclosed: Yes  
Contiguous: Yes  
Permitted: Yes  
Wet space: No  
Addition: No  
Conversion: No

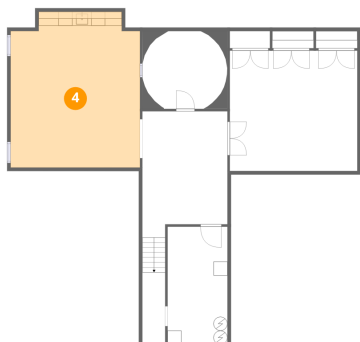
### 3 Floor 1 - Exercise Room



Dimensions: 18'3" x 17'2"  
Area: 313 sq. ft  
Counted as living area: Yes

Heated: Yes  
Finished: Yes  
Enclosed: Yes  
Contiguous: Yes  
Permitted: Yes  
Wet space: No  
Addition: No  
Conversion: No

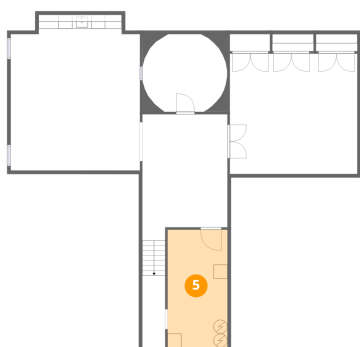
### 4 Floor 1 - Recreation Room



Dimensions: 18'5" x 22'3"  
Area: 410 sq. ft  
Counted as living area: Yes

Heated: Yes  
Finished: Yes  
Enclosed: Yes  
Contiguous: Yes  
Permitted: Yes  
Wet space: No  
Addition: No  
Conversion: No

### 5 Floor 1 - Utility



Dimensions: 8'6" x 16'9"  
Area: 143 sq. ft  
Counted as living area: No

Heated: Yes  
Finished: No  
Enclosed: Yes  
Contiguous: Yes  
Permitted: Yes  
Wet space: No  
Addition: No  
Conversion: No

## 6 Floor 2 - Hall



Dimensions: 8'5" x 6'2"  
Area: 52 sq. ft  
Counted as living area: Yes

Heated: Yes  
Finished: Yes  
Enclosed: Yes  
Contiguous: Yes  
Permitted: Yes  
Wet space: No  
Addition: No  
Conversion: No

## 7 Floor 2 - Porch



Dimensions: 12'6" x 9'11"  
Area: 123 sq. ft  
Counted as living area: No

Heated: No  
Finished: No  
Enclosed: No  
Contiguous: Yes  
Permitted: Yes  
Wet space: No  
Addition: No  
Conversion: No

## 8 Floor 2 - Kitchen



Dimensions: 9'7" x 20'0"  
Area: 192 sq. ft  
Counted as living area: Yes

Heated: Yes  
Finished: Yes  
Enclosed: Yes  
Contiguous: Yes  
Permitted: Yes  
Wet space: No  
Addition: No  
Conversion: No

## 9 Floor 2 - Bath



Dimensions: 8'4" x 9'8"  
Area: 81 sq. ft  
Counted as living area: Yes

Heated: Yes  
Finished: Yes  
Enclosed: Yes  
Contiguous: Yes  
Permitted: Yes  
Wet space: Yes  
Addition: No  
Conversion: No

## 10 Floor 2 - Hall



Dimensions: 6'11" x 7'1"  
Area: 49 sq. ft  
Counted as living area: Yes

Heated: Yes  
Finished: Yes  
Enclosed: Yes  
Contiguous: Yes  
Permitted: Yes  
Wet space: No  
Addition: No  
Conversion: No

## 11 Floor 2 - Primary Bedroom



Dimensions: 16'2" x 15'3"  
Area: 247 sq. ft  
Counted as living area: Yes

Heated: Yes  
Finished: Yes  
Enclosed: Yes  
Contiguous: Yes  
Permitted: Yes  
Wet space: No  
Addition: No  
Conversion: No

## 12 Floor 2 - Foyer



Dimensions: 12'2" x 16'10"  
Area: 205 sq. ft  
Counted as living area: Yes

Heated: Yes  
Finished: Yes  
Enclosed: Yes  
Contiguous: Yes  
Permitted: Yes  
Wet space: No  
Addition: No  
Conversion: No

## 13 Floor 2 - Bath



Dimensions: 6'8" x 7'3"  
Area: 48 sq. ft  
Counted as living area: Yes

Heated: Yes  
Finished: Yes  
Enclosed: Yes  
Contiguous: Yes  
Permitted: Yes  
Wet space: Yes  
Addition: No  
Conversion: No

## 14 Floor 2 - Covered Deck



Dimensions: 36'4" x 21'10"  
Area: 792 sq. ft  
Counted as living area: No

Heated: No  
Finished: No  
Enclosed: No  
Contiguous: Yes  
Permitted: Yes  
Wet space: No  
Addition: No  
Conversion: No

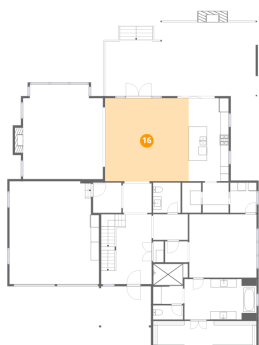
**15** Floor 2 - Hall



Dimensions: 5'6" x 5'1"  
Area: 28 sq. ft  
Counted as living area: Yes

Heated: Yes  
Finished: Yes  
Enclosed: Yes  
Contiguous: Yes  
Permitted: Yes  
Wet space: No  
Addition: No  
Conversion: No

**16** Floor 2 - Dining Area



Dimensions: 20'2" x 20'0"  
Area: 403 sq. ft  
Counted as living area: Yes

Heated: Yes  
Finished: Yes  
Enclosed: Yes  
Contiguous: Yes  
Permitted: Yes  
Wet space: No  
Addition: No  
Conversion: No

**17** Floor 2 - Primary Bath



Dimensions: 17'5" x 9'9"  
Area: 169 sq. ft  
Counted as living area: Yes

Heated: Yes  
Finished: Yes  
Enclosed: Yes  
Contiguous: Yes  
Permitted: Yes  
Wet space: Yes  
Addition: No  
Conversion: No

**18** Floor 2 - Hall



Dimensions: 6'3" x 7'3"  
Area: 46 sq. ft  
Counted as living area: Yes

Heated: Yes  
Finished: Yes  
Enclosed: Yes  
Contiguous: Yes  
Permitted: Yes  
Wet space: No  
Addition: No  
Conversion: No

**19** Floor 2 - Pantry



Dimensions: 4'8" x 7'3"  
Area: 34 sq. ft  
Counted as living area: Yes

Heated: Yes  
Finished: Yes  
Enclosed: Yes  
Contiguous: Yes  
Permitted: Yes  
Wet space: No  
Addition: No  
Conversion: No

**20** Floor 2 - Garage



Dimensions: 21'6" x 24'9"  
Area: 532 sq. ft  
Counted as living area: No

Heated: No  
Finished: No  
Enclosed: Yes  
Contiguous: Yes  
Permitted: Yes  
Wet space: No  
Addition: No  
Conversion: No

### 21 Floor 2 - Hall



Dimensions: 6'9" x 7'3"  
Area: 49 sq. ft  
Counted as living area: Yes

Heated: Yes  
Finished: Yes  
Enclosed: Yes  
Contiguous: Yes  
Permitted: Yes  
Wet space: No  
Addition: No  
Conversion: No

### 22 Floor 2 - Living Room



Dimensions: 19'3" x 22'9"  
Area: 438 sq. ft  
Counted as living area: Yes

Heated: Yes  
Finished: Yes  
Enclosed: Yes  
Contiguous: Yes  
Permitted: Yes  
Wet space: No  
Addition: No  
Conversion: No

### 23 Floor 2 - Laundry



Dimensions: 6'4" x 7'3"  
Area: 46 sq. ft  
Counted as living area: Yes

Heated: Yes  
Finished: Yes  
Enclosed: Yes  
Contiguous: Yes  
Permitted: Yes  
Wet space: No  
Addition: No  
Conversion: No

**24** Floor 2 - Bath



Dimensions: 7'2" x 3'5"  
Area: 25 sq. ft  
Counted as living area: Yes

Heated: Yes  
Finished: Yes  
Enclosed: Yes  
Contiguous: Yes  
Permitted: Yes  
Wet space: Yes  
Addition: No  
Conversion: No

**25** Floor 2 - W.I.C.



Dimensions: 24'11" x 6'9"  
Area: 168 sq. ft  
Counted as living area: Yes

Heated: Yes  
Finished: Yes  
Enclosed: Yes  
Contiguous: Yes  
Permitted: Yes  
Wet space: No  
Addition: No  
Conversion: No

**26** Floor 3 - Hall



Dimensions: 3'7" x 4'8"  
Area: 17 sq. ft  
Counted as living area: Yes

Heated: Yes  
Finished: Yes  
Enclosed: Yes  
Contiguous: Yes  
Permitted: Yes  
Wet space: No  
Addition: No  
Conversion: No

### 27 Floor 3 - Stairwell



Dimensions: 6'0" x 11'4"  
Area: 68 sq. ft  
Counted as living area: No

Heated: No  
Finished: No  
Enclosed: No  
Contiguous: Yes  
Permitted: No  
Wet space: No  
Addition: No  
Conversion: No

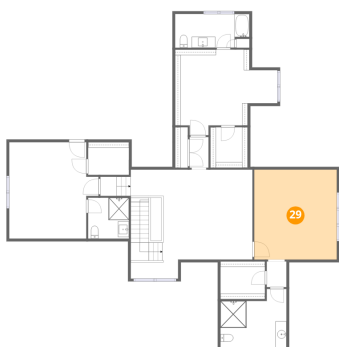
### 28 Floor 3 - Hall



Dimensions: 3'0" x 3'6"  
Area: 10 sq. ft  
Counted as living area: Yes

Heated: Yes  
Finished: Yes  
Enclosed: Yes  
Contiguous: Yes  
Permitted: Yes  
Wet space: No  
Addition: No  
Conversion: No

### 29 Floor 3 - Bedroom



Dimensions: 14'11" x 16'4"  
Area: 244 sq. ft  
Counted as living area: Yes

Heated: Yes  
Finished: Yes  
Enclosed: Yes  
Contiguous: Yes  
Permitted: Yes  
Wet space: No  
Addition: No  
Conversion: No

**30** Floor 3 - Bath



Dimensions: 7'5" x 7'5"  
Area: 55 sq. ft  
Counted as living area: Yes

Heated: Yes  
Finished: Yes  
Enclosed: Yes  
Contiguous: Yes  
Permitted: Yes  
Wet space: Yes  
Addition: No  
Conversion: No

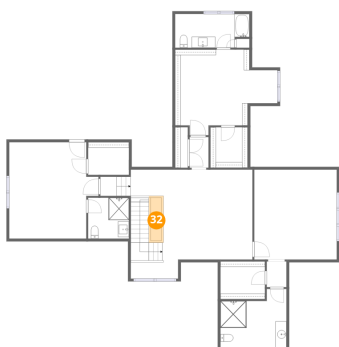
**31** Floor 3 - Bedroom



Dimensions: 16'3" x 17'6"  
Area: 284 sq. ft  
Counted as living area: Yes

Heated: Yes  
Finished: Yes  
Enclosed: Yes  
Contiguous: Yes  
Permitted: Yes  
Wet space: No  
Addition: No  
Conversion: No

**32** Floor 3 - Open To Below



Dimensions: 2'0" x 7'10"  
Area: 16 sq. ft  
Counted as living area: No

Heated: No  
Finished: No  
Enclosed: No  
Contiguous: Yes  
Permitted: No  
Wet space: No  
Addition: No  
Conversion: No

**33** Floor 3 - Family Room

---



Dimensions: 22'1" x 19'9"  
Area: 437 sq. ft  
Counted as living area: Yes

Heated: Yes  
Finished: Yes  
Enclosed: Yes  
Contiguous: Yes  
Permitted: Yes  
Wet space: No  
Addition: No  
Conversion: No

**34** Floor 3 - W.I.C.

---



Dimensions: 6'9" x 7'4"  
Area: 50 sq. ft  
Counted as living area: Yes

Heated: Yes  
Finished: Yes  
Enclosed: Yes  
Contiguous: Yes  
Permitted: Yes  
Wet space: No  
Addition: No  
Conversion: No

**35** Floor 3 - W.I.C.

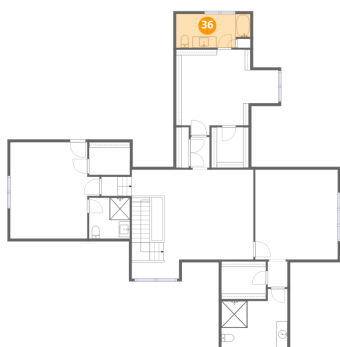
---



Dimensions: 7'5" x 5'11"  
Area: 44 sq. ft  
Counted as living area: Yes

Heated: Yes  
Finished: Yes  
Enclosed: Yes  
Contiguous: Yes  
Permitted: Yes  
Wet space: No  
Addition: No  
Conversion: No

**36** Floor 3 - Bath



Dimensions: 13'5" x 6'1"  
Area: 82 sq. ft  
Counted as living area: Yes

Heated: Yes  
Finished: Yes  
Enclosed: Yes  
Contiguous: Yes  
Permitted: Yes  
Wet space: Yes  
Addition: No  
Conversion: No

**37** Floor 3 - W.I.C.



Dimensions: 8'1" x 6'10"  
Area: 55 sq. ft  
Counted as living area: Yes

Heated: Yes  
Finished: Yes  
Enclosed: Yes  
Contiguous: Yes  
Permitted: Yes  
Wet space: No  
Addition: No  
Conversion: No

**38** Floor 3 - Hall



Dimensions: 3'5" x 5'7"  
Area: 19 sq. ft  
Counted as living area: Yes

Heated: Yes  
Finished: Yes  
Enclosed: Yes  
Contiguous: Yes  
Permitted: Yes  
Wet space: No  
Addition: No  
Conversion: No

**39** Floor 3 - Bath



Dimensions: 11'11" x 10'9"  
Area: 129 sq. ft  
Counted as living area: Yes

Heated: Yes  
Finished: Yes  
Enclosed: Yes  
Contiguous: Yes  
Permitted: Yes  
Wet space: Yes  
Addition: No  
Conversion: No

**40** Floor 3 - W.I.C.



Dimensions: 18'7" x 15'6"  
Area: 288 sq. ft  
Counted as living area: Yes

Heated: Yes  
Finished: Yes  
Enclosed: Yes  
Contiguous: Yes  
Permitted: Yes  
Wet space: No  
Addition: No  
Conversion: No