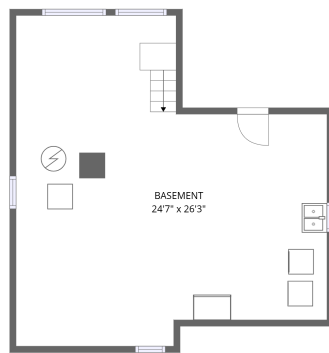
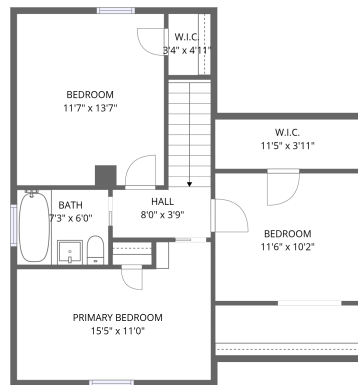
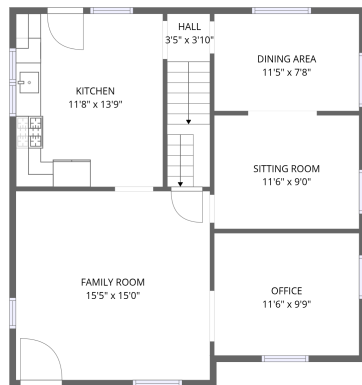


## Home data report

615 Elm Street, Batavia, Kane County, Illinois, United States, 60510



**Total Area: 1439 sq. ft**

Basement: 0 sq. ft, 1st Floor: 769 sq. ft, 2nd Floor: 670 sq. ft

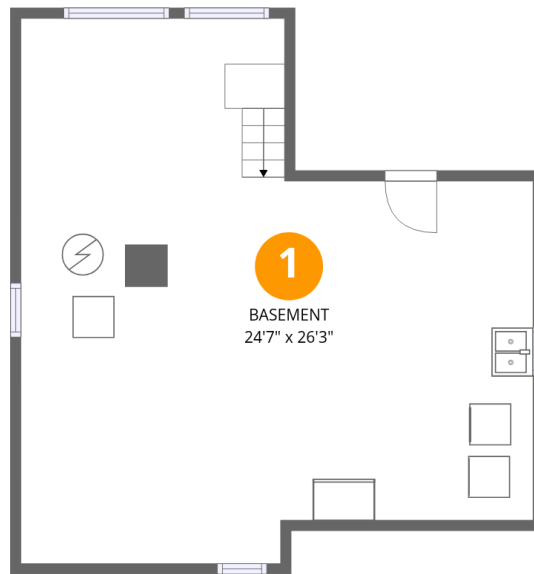
Excluded: Basement 528 sq. ft, Walls: 166 sq. ft

## Property summary



Home data report

615 Elm Street, Batavia, Kane County, Illinois, United States, 60510



### Room dimensions

Floor 1 Below grade

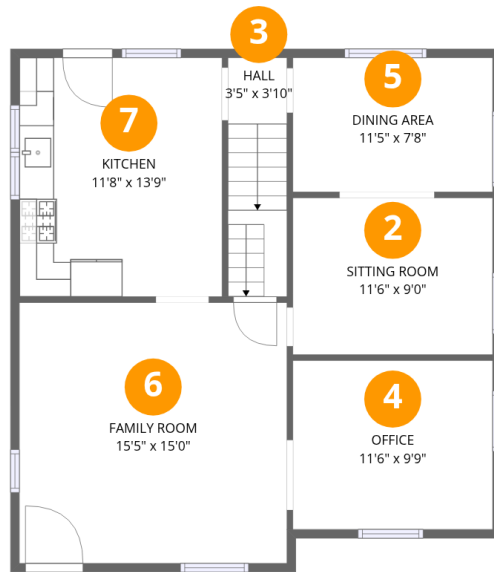
Total:0sqft

Excluded: 528sqft

#		Dimensions	sqft	Counted as living area
1	Basement	24'7" x 26'3"	528 sq. ft	No

Home data report

615 Elm Street, Batavia, Kane County, Illinois, United States, 60510



## Room dimensions

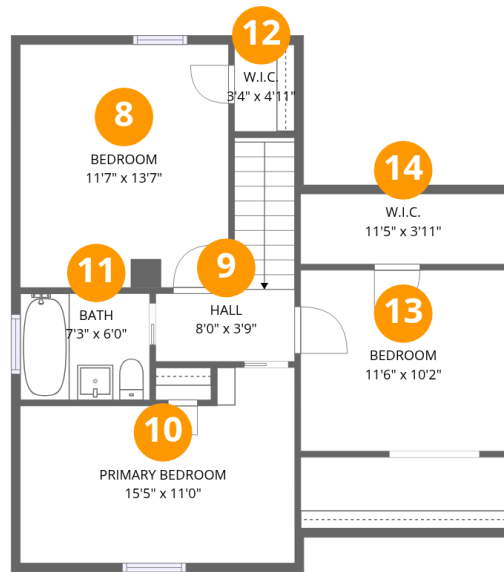
Floor 2

Total:769sqft Excluded: 0sqft

#		Dimensions	sqft	Counted as living area
2	Sitting Room	11'6" x 9'0"	104 sq. ft	Yes
3	Hall	3'5" x 3'10"	47 sq. ft	Yes
4	Office	11'6" x 9'9"	112 sq. ft	Yes
5	Dining Area	11'5" x 7'8"	89 sq. ft	Yes
6	Family Room	15'5" x 15'0"	231 sq. ft	Yes
7	Kitchen	11'8" x 13'9"	160 sq. ft	Yes

Home data report

615 Elm Street, Batavia, Kane County, Illinois, United States, 60510



## Room dimensions

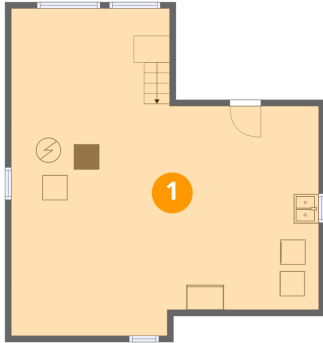
Floor 3

Total:670sqft Excluded: 0sqft

#		Dimensions	sqft	Counted as living area
8	Bedroom	11'7" x 13'7"	159 sq. ft	Yes
9	Hall	8'0" x 3'9"	59 sq. ft	Yes
10	Primary Bedroom	15'5" x 11'0"	145 sq. ft	Yes
11	Bath	7'3" x 6'0"	43 sq. ft	Yes
12	W.I.C.	3'4" x 4'11"	16 sq. ft	Yes
13	Bedroom	11'6" x 10'2"	117 sq. ft	Yes
14	W.I.C.	11'5" x 3'11"	45 sq. ft	Yes

615 Elm Street, Batavia, Kane County, Illinois, United States, 60510

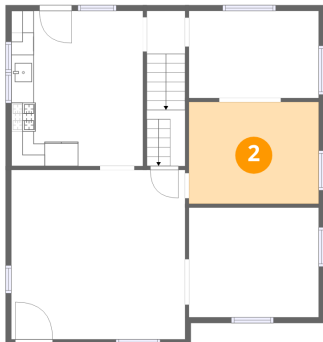
## 1 Floor 1 - Basement



Dimensions: 24'7" x 26'3"  
Area: 528 sq. ft  
Counted as living area: No

Heated: Yes  
Finished: No  
Enclosed: Yes  
Contiguous: Yes  
Permitted: Yes  
Wet space: No  
Addition: No  
Conversion: No

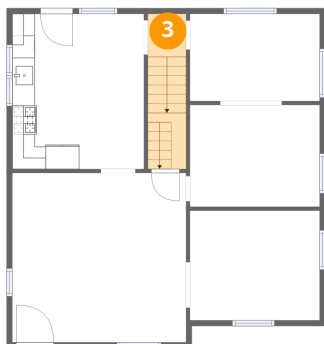
## 2 Floor 2 - Sitting Room



Dimensions: 11'6" x 9'0"  
Area: 104 sq. ft  
Counted as living area: Yes

Heated: Yes  
Finished: Yes  
Enclosed: Yes  
Contiguous: Yes  
Permitted: Yes  
Wet space: No  
Addition: No  
Conversion: No

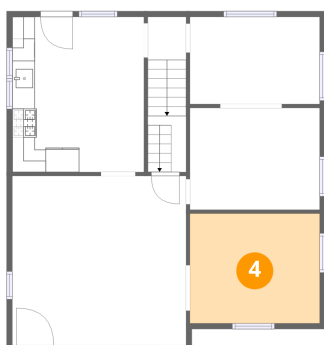
### 3 Floor 2 - Hall



Dimensions: 3'5" x 3'10"  
Area: 47 sq. ft  
Counted as living area: Yes

Heated: Yes  
Finished: Yes  
Enclosed: Yes  
Contiguous: Yes  
Permitted: Yes  
Wet space: No  
Addition: No  
Conversion: No

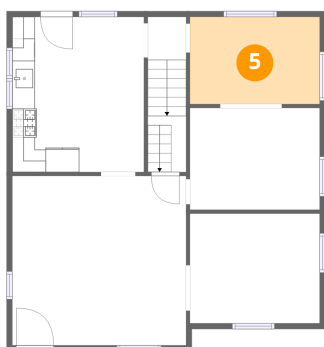
### 4 Floor 2 - Office



Dimensions: 11'6" x 9'9"  
Area: 112 sq. ft  
Counted as living area: Yes

Heated: Yes  
Finished: Yes  
Enclosed: Yes  
Contiguous: Yes  
Permitted: Yes  
Wet space: No  
Addition: No  
Conversion: No

### 5 Floor 2 - Dining Area



Dimensions: 11'5" x 7'8"  
Area: 89 sq. ft  
Counted as living area: Yes

Heated: Yes  
Finished: Yes  
Enclosed: Yes  
Contiguous: Yes  
Permitted: Yes  
Wet space: No  
Addition: No  
Conversion: No

615 Elm Street, Batavia, Kane County, Illinois, United States, 60510

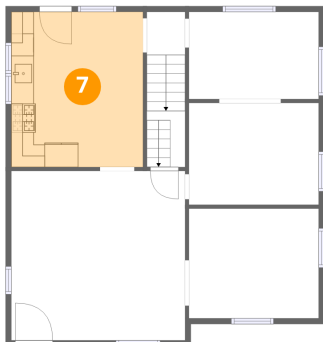
## 6 Floor 2 - Family Room



Dimensions: 15'5" x 15'0"  
Area: 231 sq. ft  
Counted as living area: Yes

Heated: Yes  
Finished: Yes  
Enclosed: Yes  
Contiguous: Yes  
Permitted: Yes  
Wet space: No  
Addition: No  
Conversion: No

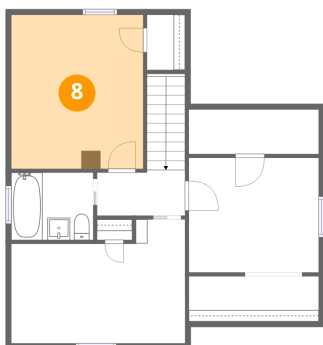
## 7 Floor 2 - Kitchen



Dimensions: 11'8" x 13'9"  
Area: 160 sq. ft  
Counted as living area: Yes

Heated: Yes  
Finished: Yes  
Enclosed: Yes  
Contiguous: Yes  
Permitted: Yes  
Wet space: No  
Addition: No  
Conversion: No

## 8 Floor 3 - Bedroom

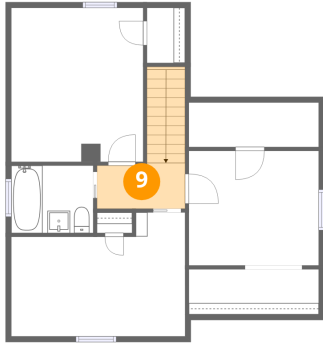


Dimensions: 11'7" x 13'7"  
Area: 159 sq. ft  
Counted as living area: Yes

Heated: Yes  
Finished: Yes  
Enclosed: Yes  
Contiguous: Yes  
Permitted: Yes  
Wet space: No  
Addition: No  
Conversion: No

615 Elm Street, Batavia, Kane County, Illinois, United States, 60510

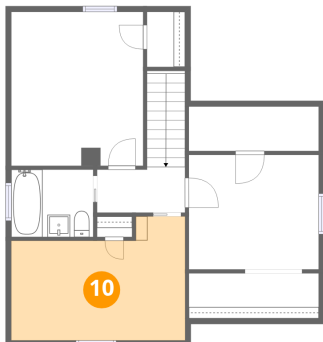
### 9 Floor 3 - Hall



Dimensions: 8'0" x 3'9"  
Area: 59 sq. ft  
Counted as living area: Yes

Heated: Yes  
Finished: Yes  
Enclosed: Yes  
Contiguous: Yes  
Permitted: Yes  
Wet space: No  
Addition: No  
Conversion: No

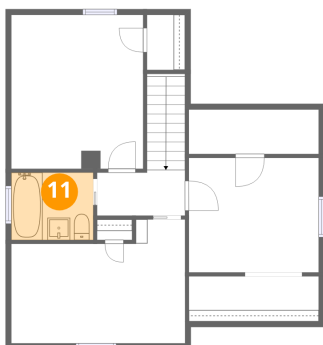
### 10 Floor 3 - Primary Bedroom



Dimensions: 15'5" x 11'0"  
Area: 145 sq. ft  
Counted as living area: Yes

Heated: Yes  
Finished: Yes  
Enclosed: Yes  
Contiguous: Yes  
Permitted: Yes  
Wet space: No  
Addition: No  
Conversion: No

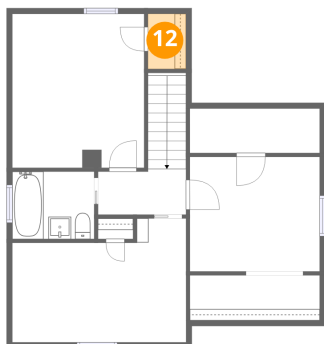
### 11 Floor 3 - Bath



Dimensions: 7'3" x 6'0"  
Area: 43 sq. ft  
Counted as living area: Yes

Heated: Yes  
Finished: Yes  
Enclosed: Yes  
Contiguous: Yes  
Permitted: Yes  
Wet space: Yes  
Addition: No  
Conversion: No

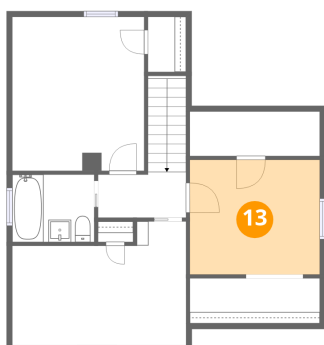
**12** Floor 3 - W.I.C.



Dimensions: 3'4" x 4'11"  
Area: 16 sq. ft  
Counted as living area: Yes

Heated: Yes  
Finished: Yes  
Enclosed: Yes  
Contiguous: Yes  
Permitted: Yes  
Wet space: No  
Addition: No  
Conversion: No

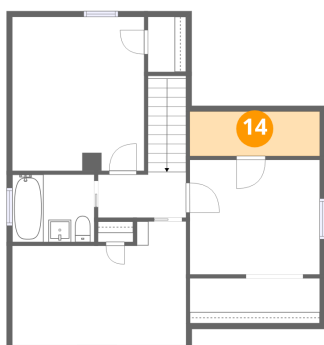
**13** Floor 3 - Bedroom



Dimensions: 11'6" x 10'2"  
Area: 117 sq. ft  
Counted as living area: Yes

Heated: Yes  
Finished: Yes  
Enclosed: Yes  
Contiguous: Yes  
Permitted: Yes  
Wet space: No  
Addition: No  
Conversion: No

**14** Floor 3 - W.I.C.



Dimensions: 11'5" x 3'11"  
Area: 45 sq. ft  
Counted as living area: Yes

Heated: Yes  
Finished: Yes  
Enclosed: Yes  
Contiguous: Yes  
Permitted: Yes  
Wet space: No  
Addition: No  
Conversion: No