

Home data report

130 County Road 2615, Alto, Cherokee County, Texas, United States, 75925



Total Area: 2028 sq. ft

1st Floor: 2028 sq. ft

Excluded: Garage 545 sq. ft, Screened porch 132 sq. ft, Walls: 152 sq. ft

Property summary



Home data report

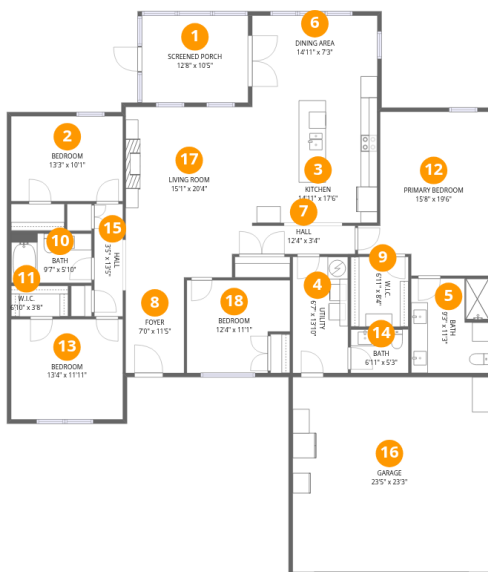
130 County Road 2615, Alto, Cherokee County, Texas, United States, 75925

 **1**
Half baths

 **1**
Garages

Home data report

130 County Road 2615, Alto, Cherokee County, Texas, United States, 75925



Room dimensions

Floor 1

Total:2028sqft

Excluded: 677sqft

#		Dimensions	sqft	Counted as living area
1	Screened Porch	12'8" x 10'5"	132 sq. ft	No
2	Bedroom	13'3" x 10'1"	135 sq. ft	Yes
3	Kitchen	14'11" x 17'6"	262 sq. ft	Yes
4	Utility	6'7" x 13'10"	91 sq. ft	Yes
5	Bath	9'3" x 11'3"	104 sq. ft	Yes
6	Dining Area	14'11" x 7'3"	109 sq. ft	Yes
7	Hall	12'4" x 3'4"	41 sq. ft	Yes
8	Foyer	7'0" x 11'5"	80 sq. ft	Yes
9	W.I.C.	6'11" x 8'4"	57 sq. ft	Yes
10	Bath	9'7" x 5'10"	57 sq. ft	Yes
11	W.I.C.	6'10" x 3'8"	25 sq. ft	Yes

Home data report

130 County Road 2615, Alto, Cherokee County, Texas, United States, 75925

#		Dimensions	sqft	Counted as living area
12	Primary Bedroom	15'8" x 19'6"	254 sq. ft	Yes
13	Bedroom	13'4" x 11'11"	160 sq. ft	Yes
14	Bath	6'11" x 5'3"	36 sq. ft	Yes
15	Hall	3'5" x 13'5"	46 sq. ft	Yes
16	Garage	23'5" x 23'3"	545 sq. ft	No
17	Living Room	15'1" x 20'4"	301 sq. ft	Yes
18	Bedroom	12'4" x 11'1"	123 sq. ft	Yes

1 Floor 1 - Screened Porch



Dimensions: 12'8" x 10'5"
Area: 132 sq. ft
Counted as living area: No

Heated: No
Finished: No
Enclosed: No
Contiguous: Yes
Permitted: Yes
Wet space: No
Addition: No
Conversion: No

2 Floor 1 - Bedroom



Dimensions: 13'3" x 10'1"
Area: 135 sq. ft
Counted as living area: Yes

Heated: Yes
Finished: Yes
Enclosed: Yes
Contiguous: Yes
Permitted: Yes
Wet space: No
Addition: No
Conversion: No

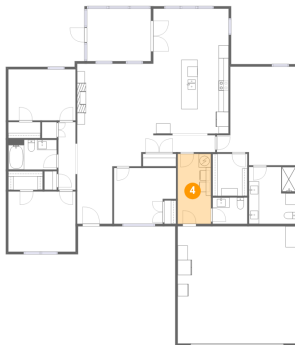
3 Floor 1 - Kitchen



Dimensions: 14'11" x 17'6"
Area: 262 sq. ft
Counted as living area: Yes

Heated: Yes
Finished: Yes
Enclosed: Yes
Contiguous: Yes
Permitted: Yes
Wet space: No
Addition: No
Conversion: No

4 Floor 1 - Utility



Dimensions: 6'7" x 13'10"
Area: 91 sq. ft
Counted as living area: Yes

Heated: Yes
Finished: Yes
Enclosed: Yes
Contiguous: Yes
Permitted: Yes
Wet space: No
Addition: No
Conversion: No

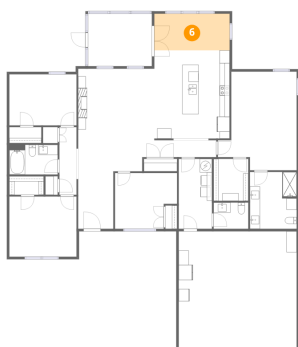
5 Floor 1 - Bath



Dimensions: 9'3" x 11'3"
Area: 104 sq. ft
Counted as living area: Yes

Heated: Yes
Finished: Yes
Enclosed: Yes
Contiguous: Yes
Permitted: Yes
Wet space: Yes
Addition: No
Conversion: No

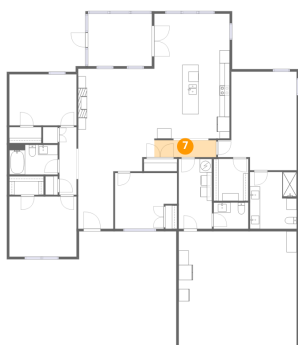
6 Floor 1 - Dining Area



Dimensions: 14'11" x 7'3"
Area: 109 sq. ft
Counted as living area: Yes

Heated: Yes
Finished: Yes
Enclosed: Yes
Contiguous: Yes
Permitted: Yes
Wet space: No
Addition: No
Conversion: No

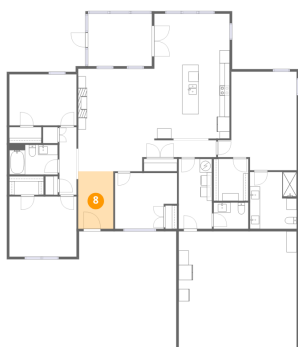
7 Floor 1 - Hall



Dimensions: 12'4" x 3'4"
Area: 41 sq. ft
Counted as living area: Yes

Heated: Yes
Finished: Yes
Enclosed: Yes
Contiguous: Yes
Permitted: Yes
Wet space: No
Addition: No
Conversion: No

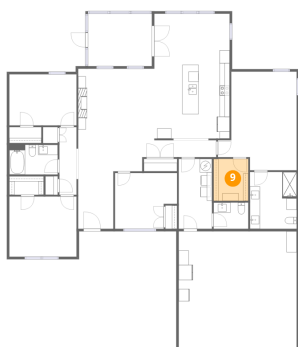
8 Floor 1 - Foyer



Dimensions: 7'0" x 11'5"
Area: 80 sq. ft
Counted as living area: Yes

Heated: Yes
Finished: Yes
Enclosed: Yes
Contiguous: Yes
Permitted: Yes
Wet space: No
Addition: No
Conversion: No

9 Floor 1 - W.I.C.



Dimensions: 6'11" x 8'4"
Area: 57 sq. ft
Counted as living area: Yes

Heated: Yes
Finished: Yes
Enclosed: Yes
Contiguous: Yes
Permitted: Yes
Wet space: No
Addition: No
Conversion: No

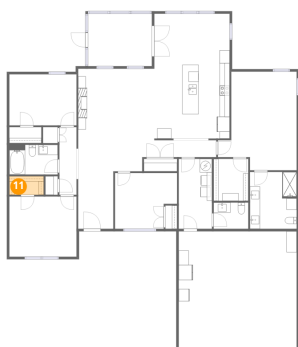
10 Floor 1 - Bath



Dimensions: 9'7" x 5'10"
Area: 57 sq. ft
Counted as living area: Yes

Heated: Yes
Finished: Yes
Enclosed: Yes
Contiguous: Yes
Permitted: Yes
Wet space: Yes
Addition: No
Conversion: No

11 Floor 1 - W.I.C.



Dimensions: 6'10" x 3'8"
Area: 25 sq. ft
Counted as living area: Yes

Heated: Yes
Finished: Yes
Enclosed: Yes
Contiguous: Yes
Permitted: Yes
Wet space: No
Addition: No
Conversion: No

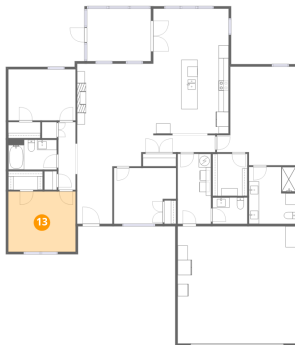
12 Floor 1 - Primary Bedroom



Dimensions: 15'8" x 19'6"
Area: 254 sq. ft
Counted as living area: Yes

Heated: Yes
Finished: Yes
Enclosed: Yes
Contiguous: Yes
Permitted: Yes
Wet space: No
Addition: No
Conversion: No

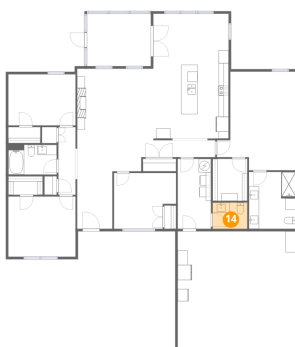
13 Floor 1 - Bedroom



Dimensions: 13'4" x 11'11"
Area: 160 sq. ft
Counted as living area: Yes

Heated: Yes
Finished: Yes
Enclosed: Yes
Contiguous: Yes
Permitted: Yes
Wet space: No
Addition: No
Conversion: No

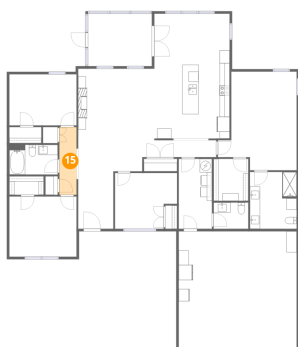
14 Floor 1 - Bath



Dimensions: 6'11" x 5'3"
Area: 36 sq. ft
Counted as living area: Yes

Heated: Yes
Finished: Yes
Enclosed: Yes
Contiguous: Yes
Permitted: Yes
Wet space: Yes
Addition: No
Conversion: No

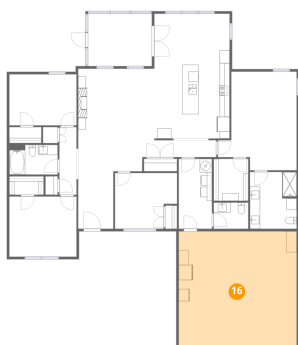
15 Floor 1 - Hall



Dimensions: 3'5" x 13'5"
Area: 46 sq. ft
Counted as living area: Yes

Heated: Yes
Finished: Yes
Enclosed: Yes
Contiguous: Yes
Permitted: Yes
Wet space: No
Addition: No
Conversion: No

16 Floor 1 - Garage



Dimensions: 23'5" x 23'3"
Area: 545 sq. ft
Counted as living area: No

Heated: No
Finished: No
Enclosed: Yes
Contiguous: Yes
Permitted: Yes
Wet space: No
Addition: No
Conversion: No

17 Floor 1 - Living Room



Dimensions: 15'1" x 20'4"
Area: 301 sq. ft
Counted as living area: Yes

Heated: Yes
Finished: Yes
Enclosed: Yes
Contiguous: Yes
Permitted: Yes
Wet space: No
Addition: No
Conversion: No

Home data report

130 County Road 2615, Alto, Cherokee County, Texas, United States, 75925

18 Floor 1 - Bedroom



Dimensions: 12'4" x 11'1"
Area: 123 sq. ft
Counted as living area: Yes

Heated: Yes
Finished: Yes
Enclosed: Yes
Contiguous: Yes
Permitted: Yes
Wet space: No
Addition: No
Conversion: No