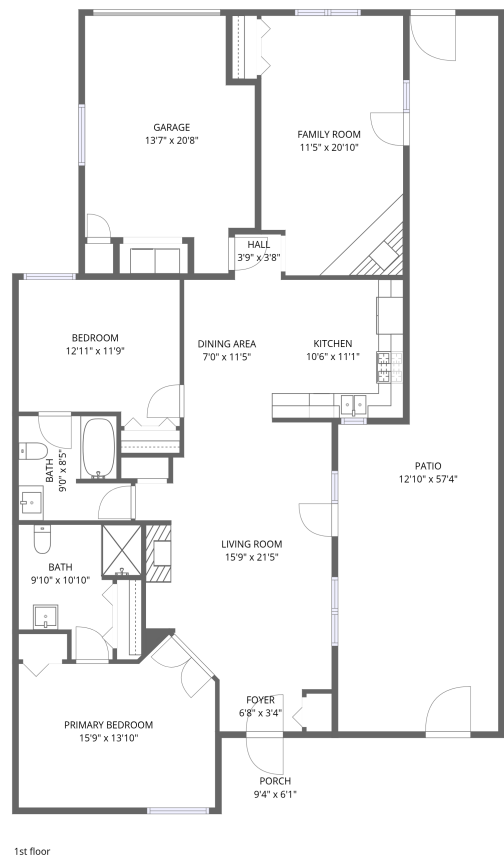


443 Windward Drive SW,Roanoke,Virginia,United States



Total Area: 1349 sq. ft

1st Floor: 1349 sq. ft

Excluded: Patio 550 sq. ft, Porch 57 sq. ft, Garage 236 sq. ft, Walls: 131 sq. ft

Property summary

1 Floors

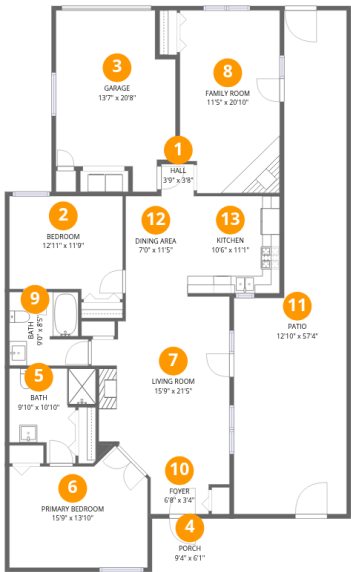
2 Bedrooms

2 Bathrooms

1 Garages

Home data report

443 Windward Drive SW,Roanoke,Virginia,United States



Room dimensions

Floor 1

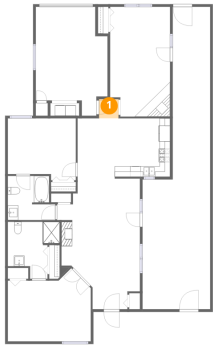
Total:1349sqft Excluded: 843sqft

#		Dimensions	sqft	Counted as living area
1	Hall	3'9" x 3'8"	14 sq. ft	Yes
2	Bedroom	12'11" x 11'9"	142 sq. ft	Yes
3	Garage	13'7" x 20'8"	236 sq. ft	No
4	Porch	9'4" x 6'1"	57 sq. ft	No
5	Bath	9'10" x 10'10"	81 sq. ft	Yes
6	Primary Bedroom	15'9" x 13'10"	186 sq. ft	Yes
7	Living Room	15'9" x 21'5"	289 sq. ft	Yes
8	Family Room	11'5" x 20'10"	230 sq. ft	Yes
9	Bath	9'0" x 8'5"	68 sq. ft	Yes
10	Foyer	6'8" x 3'4"	22 sq. ft	Yes
11	Patio	12'10" x 57'4"	550 sq. ft	No

443 Windward Drive SW,Roanoke,Virginia,United States

#		Dimensions	sqft	Counted as living area
12	Dining Area	7'0" x 11'5"	81 sq. ft	Yes
13	Kitchen	10'6" x 11'1"	116 sq. ft	Yes

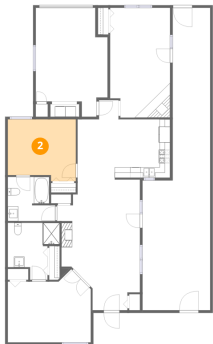
1 Floor 1 - Hall



Dimensions: 3'9" x 3'8"
Area: 14 sq. ft
Counted as living area: Yes

Heated: Yes
Finished: Yes
Enclosed: Yes
Contiguous: Yes
Permitted: Yes
Wet space: No
Addition: No
Conversion: No

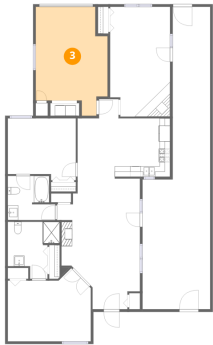
2 Floor 1 - Bedroom



Dimensions: 12'11" x 11'9"
Area: 142 sq. ft
Counted as living area: Yes

Heated: Yes
Finished: Yes
Enclosed: Yes
Contiguous: Yes
Permitted: Yes
Wet space: No
Addition: No
Conversion: No

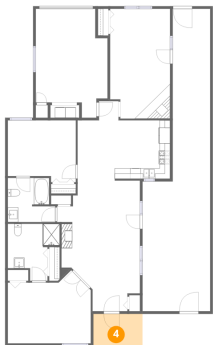
3 Floor 1 - Garage



Dimensions: 13'7" x 20'8"
Area: 236 sq. ft
Counted as living area: No

Heated: No
Finished: No
Enclosed: Yes
Contiguous: Yes
Permitted: Yes
Wet space: No
Addition: No
Conversion: No

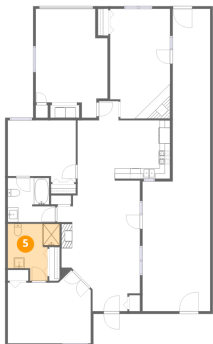
4 Floor 1 - Porch



Dimensions: 9'4" x 6'1"
Area: 57 sq. ft
Counted as living area: No

Heated: No
Finished: No
Enclosed: No
Contiguous: Yes
Permitted: Yes
Wet space: No
Addition: No
Conversion: No

5 Floor 1 - Bath



Dimensions: 9'10" x 10'10"
Area: 81 sq. ft
Counted as living area: Yes

Heated: Yes
Finished: Yes
Enclosed: Yes
Contiguous: Yes
Permitted: Yes
Wet space: Yes
Addition: No
Conversion: No

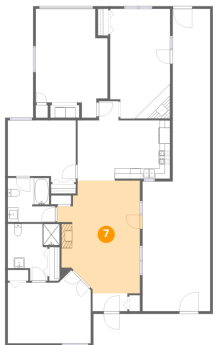
6 Floor 1 - Primary Bedroom



Dimensions: 15'9" x 13'10"
Area: 186 sq. ft
Counted as living area: Yes

Heated: Yes
Finished: Yes
Enclosed: Yes
Contiguous: Yes
Permitted: Yes
Wet space: No
Addition: No
Conversion: No

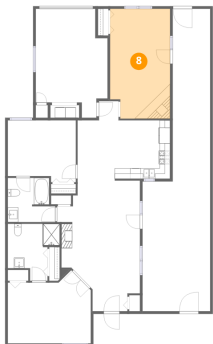
7 Floor 1 - Living Room



Dimensions: 15'9" x 21'5"
Area: 289 sq. ft
Counted as living area: Yes

Heated: Yes
Finished: Yes
Enclosed: Yes
Contiguous: Yes
Permitted: Yes
Wet space: No
Addition: No
Conversion: No

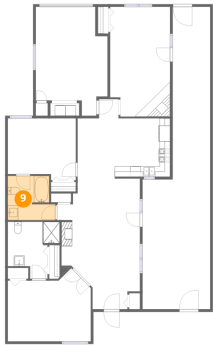
8 Floor 1 - Family Room



Dimensions: 11'5" x 20'10"
Area: 230 sq. ft
Counted as living area: Yes

Heated: Yes
Finished: Yes
Enclosed: Yes
Contiguous: Yes
Permitted: Yes
Wet space: No
Addition: No
Conversion: No

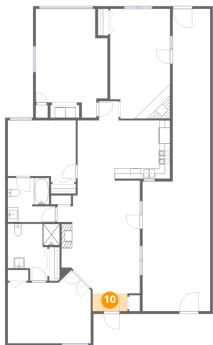
9 Floor 1 - Bath



Dimensions: 9'0" x 8'5"
Area: 68 sq. ft
Counted as living area: Yes

Heated: Yes
Finished: Yes
Enclosed: Yes
Contiguous: Yes
Permitted: Yes
Wet space: Yes
Addition: No
Conversion: No

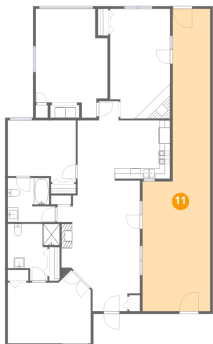
10 Floor 1 - Foyer



Dimensions: 6'8" x 3'4"
Area: 22 sq. ft
Counted as living area: Yes

Heated: Yes
Finished: Yes
Enclosed: Yes
Contiguous: Yes
Permitted: Yes
Wet space: No
Addition: No
Conversion: No

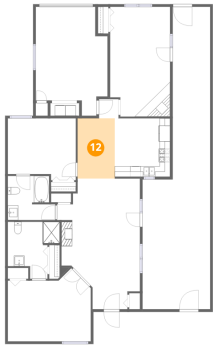
11 Floor 1 - Patio



Dimensions: 12'10" x 57'4"
Area: 550 sq. ft
Counted as living area: No

Heated: No
Finished: No
Enclosed: No
Contiguous: Yes
Permitted: Yes
Wet space: No
Addition: No
Conversion: No

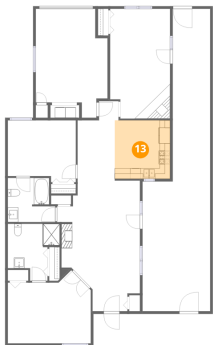
12 Floor 1 - Dining Area



Dimensions: 7'0" x 11'5"
Area: 81 sq. ft
Counted as living area: Yes

Heated: Yes
Finished: Yes
Enclosed: Yes
Contiguous: Yes
Permitted: Yes
Wet space: No
Addition: No
Conversion: No

13 Floor 1 - Kitchen



Dimensions: 10'6" x 11'1"
Area: 116 sq. ft
Counted as living area: Yes

Heated: Yes
Finished: Yes
Enclosed: Yes
Contiguous: Yes
Permitted: Yes
Wet space: No
Addition: No
Conversion: No