

**100 Nightingale Lane, Quispamsis, Kings County, New Brunswick, Canada, E2E 0V8**



Excluded: Utility 166 sq. ft, Porch 205 sq. ft, Deck 323 sq. ft, Garage 573 sq. ft, Walls: 236 sq. ft

## Property summary



Home report

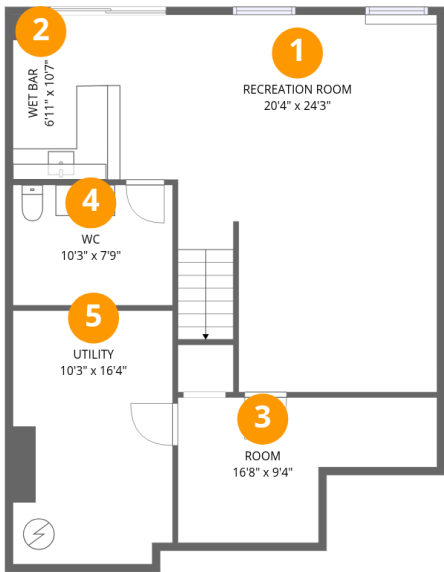
100 Nightingale Lane, Quispamsis, Kings County, New Brunswick, Canada, E2E 0V8

 **2**  
Half baths

 **1**  
Garages

Home report

100 Nightingale Lane, Quispamsis, Kings County, New Brunswick, Canada, E2E 0V8



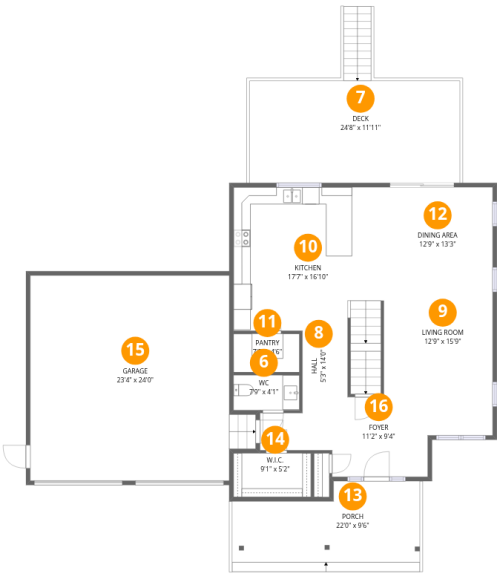
Room dimensions

Floor 1 Below ground Total:735sqft   Excluded: 166sqft

#		Max Dimensions	sqft	Included
1	Recreation Room	20'4" x 24'3"	428 sq. ft	Yes
2	Wet Bar	6'11" x 10'7"	73 sq. ft	Yes
3	Room	16'8" x 9'4"	119 sq. ft	Yes
4	WC	10'3" x 7'9"	79 sq. ft	Yes
5	Utility	10'3" x 16'4"	166 sq. ft	No

Home report

100 Nightingale Lane, Quispamsis, Kings County, New Brunswick, Canada, E2E 0V8



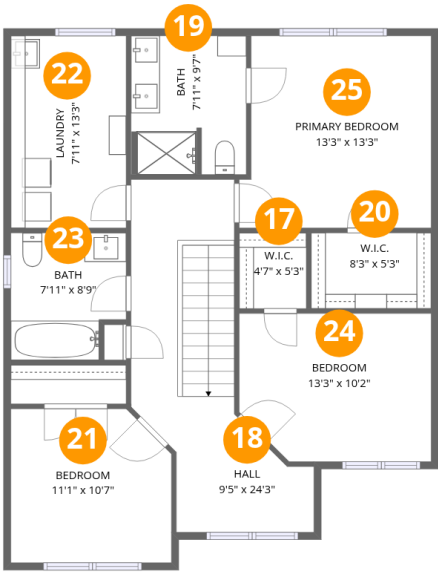
Room dimensions

Floor 2 Total:1004sqft Excluded: 1101sqft

#		Max Dimensions	sqft	Included
6	WC	7'9" x 4'1"	32 sq. ft	Yes
7	Deck	24'8" x 11'11"	323 sq. ft	No
8	Hall	5'3" x 14'0"	133 sq. ft	Yes
9	Living Room	12'9" x 15'9"	178 sq. ft	Yes
10	Kitchen	17'7" x 16'10"	281 sq. ft	Yes
11	Pantry	7'9" x 4'6"	35 sq. ft	Yes
12	Dining Area	12'9" x 13'3"	169 sq. ft	Yes
13	Porch	22'0" x 9'6"	205 sq. ft	No
14	W.I.C.	9'1" x 5'2"	47 sq. ft	Yes
15	Garage	23'4" x 24'0"	573 sq. ft	No
16	Foyer	11'2" x 9'4"	105 sq. ft	Yes

Home report

100 Nightingale Lane, Quispamsis, Kings County, New Brunswick, Canada, E2E 0V8



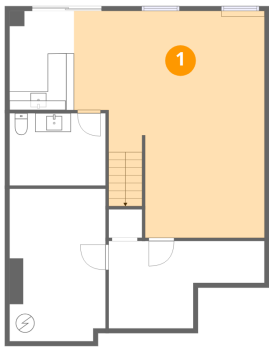
Room dimensions

Floor 3 Total:972sqft Excluded: 0sqft

#		Max Dimensions	sqft	Included
17	W.I.C.	4'7" x 5'3"	24 sq. ft	Yes
18	Hall	9'5" x 24'3"	182 sq. ft	Yes
19	Bath	7'11" x 9'7"	75 sq. ft	Yes
20	W.I.C.	8'3" x 5'3"	43 sq. ft	Yes
21	Bedroom	11'1" x 10'7"	112 sq. ft	Yes
22	Laundry	7'11" x 13'3"	105 sq. ft	Yes
23	Bath	7'11" x 8'9"	64 sq. ft	Yes
24	Bedroom	13'3" x 10'2"	129 sq. ft	Yes
25	Primary Bedroom	13'3" x 13'3"	167 sq. ft	Yes

100 Nightingale Lane, Quispamsis, Kings County, New Brunswick, Canada, E2E 0V8

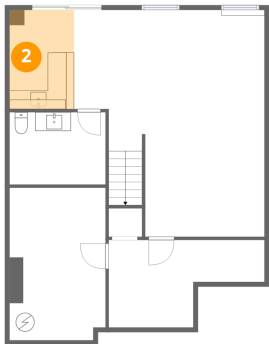
1 Floor 1 - Recreation Room



Max Dimensions: 20'4" x 24'3"  
Calculated Area: 428 sq. ft  
Included: Yes

Heated: Yes  
Finished: Yes  
Enclosed: Yes  
Contiguous: Yes  
Permitted: Yes  
Wet space: No  
Addition: No  
Conversion: No

2 Floor 1 - Wet Bar

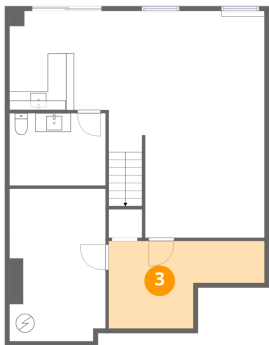


Max Dimensions: 6'11" x 10'7"  
Calculated Area: 73 sq. ft  
Included: Yes

Heated: Yes  
Finished: Yes  
Enclosed: Yes  
Contiguous: Yes  
Permitted: Yes  
Wet space: No  
Addition: No  
Conversion: No

100 Nightingale Lane, Quispamsis, Kings County, New Brunswick, Canada, E2E 0V8

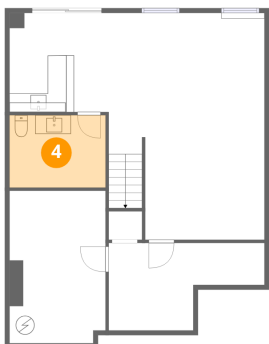
3 Floor 1 - Room



Max Dimensions: 16'8" x 9'4"  
Calculated Area: 119 sq. ft  
Included: Yes

Heated: Yes  
Finished: Yes  
Enclosed: Yes  
Contiguous: Yes  
Permitted: Yes  
Wet space: No  
Addition: No  
Conversion: No

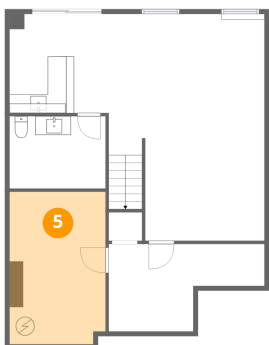
4 Floor 1 - WC



Max Dimensions: 10'3" x 7'9"  
Calculated Area: 79 sq. ft  
Included: Yes

Heated: Yes  
Finished: Yes  
Enclosed: Yes  
Contiguous: Yes  
Permitted: Yes  
Wet space: Yes  
Addition: No  
Conversion: No

5 Floor 1 - Utility



Max Dimensions: 10'3" x 16'4"  
Calculated Area: 166 sq. ft  
Included: No

Heated: Yes  
Finished: No  
Enclosed: Yes  
Contiguous: Yes  
Permitted: Yes  
Wet space: No  
Addition: No  
Conversion: No

100 Nightingale Lane, Quispamsis, Kings County, New Brunswick, Canada, E2E 0V8

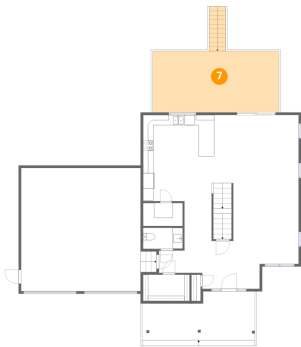
6 Floor 2 - WC



Max Dimensions: 7'9" x 4'1"  
Calculated Area: 32 sq. ft  
Included: Yes

Heated: Yes  
Finished: Yes  
Enclosed: Yes  
Contiguous: Yes  
Permitted: Yes  
Wet space: Yes  
Addition: No  
Conversion: No

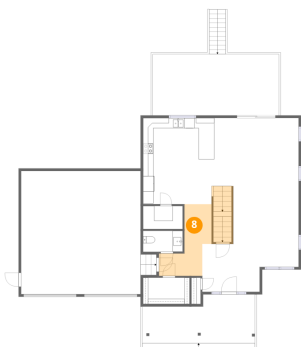
7 Floor 2 - Deck



Max Dimensions: 24'8" x 11'11"  
Calculated Area: 323 sq. ft  
Included: No

Heated: No  
Finished: No  
Enclosed: No  
Contiguous: Yes  
Permitted: Yes  
Wet space: No  
Addition: No  
Conversion: No

8 Floor 2 - Hall



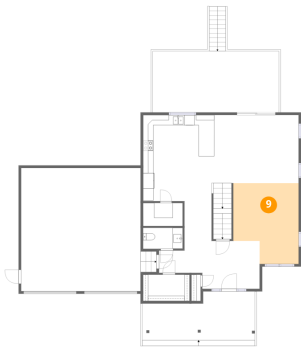
Max Dimensions: 5'3" x 14'0"  
Calculated Area: 133 sq. ft  
Included: Yes

Heated: Yes  
Finished: Yes  
Enclosed: Yes  
Contiguous: Yes  
Permitted: Yes  
Wet space: No  
Addition: No  
Conversion: No



100 Nightingale Lane, Quispamsis, Kings County, New Brunswick, Canada, E2E 0V8

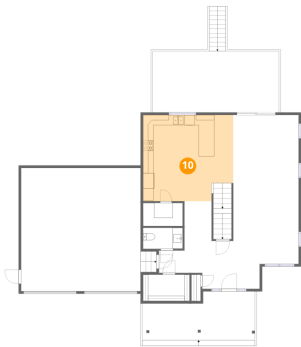
9 Floor 2 - Living Room



Max Dimensions: 12'9" x 15'9"  
Calculated Area: 178 sq. ft  
Included: Yes

Heated: Yes  
Finished: Yes  
Enclosed: Yes  
Contiguous: Yes  
Permitted: Yes  
Wet space: No  
Addition: No  
Conversion: No

10 Floor 2 - Kitchen



Max Dimensions: 17'7" x 16'10"  
Calculated Area: 281 sq. ft  
Included: Yes

Heated: Yes  
Finished: Yes  
Enclosed: Yes  
Contiguous: Yes  
Permitted: Yes  
Wet space: No  
Addition: No  
Conversion: No

11 Floor 2 - Pantry

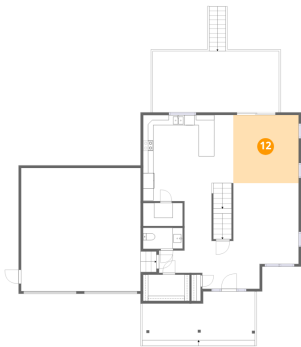


Max Dimensions: 7'9" x 4'6"  
Calculated Area: 35 sq. ft  
Included: Yes

Heated: Yes  
Finished: Yes  
Enclosed: Yes  
Contiguous: Yes  
Permitted: Yes  
Wet space: No  
Addition: No  
Conversion: No

100 Nightingale Lane, Quispamsis, Kings County, New Brunswick, Canada, E2E 0V8

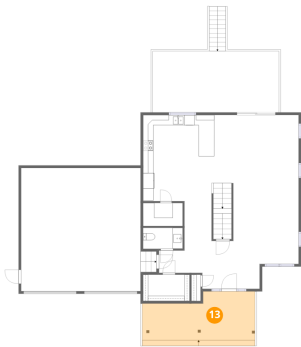
12 Floor 2 - Dining Area



Max Dimensions: 12'9" x 13'3"  
Calculated Area: 169 sq. ft  
Included: Yes

Heated: Yes  
Finished: Yes  
Enclosed: Yes  
Contiguous: Yes  
Permitted: Yes  
Wet space: No  
Addition: No  
Conversion: No

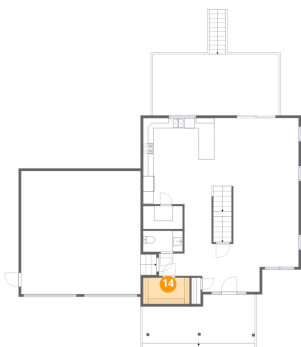
13 Floor 2 - Porch



Max Dimensions: 22'0" x 9'6"  
Calculated Area: 205 sq. ft  
Included: No

Heated: No  
Finished: No  
Enclosed: No  
Contiguous: Yes  
Permitted: Yes  
Wet space: No  
Addition: No  
Conversion: No

14 Floor 2 - W.I.C.

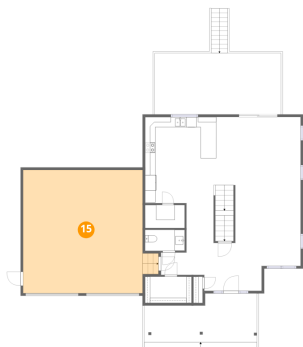


Max Dimensions: 9'1" x 5'2"  
Calculated Area: 47 sq. ft  
Included: Yes

Heated: Yes  
Finished: Yes  
Enclosed: Yes  
Contiguous: Yes  
Permitted: Yes  
Wet space: No  
Addition: No  
Conversion: No

100 Nightingale Lane, Quispamsis, Kings County, New Brunswick, Canada, E2E 0V8

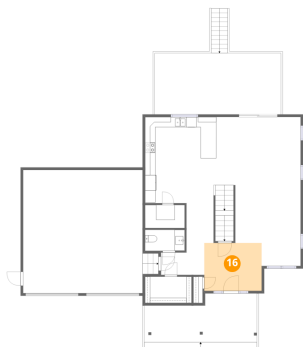
15 Floor 2 - Garage



Max Dimensions: 23'4" x 24'0"  
Calculated Area: 573 sq. ft  
Included: No

Heated: No  
Finished: No  
Enclosed: Yes  
Contiguous: Yes  
Permitted: Yes  
Wet space: No  
Addition: No  
Conversion: No

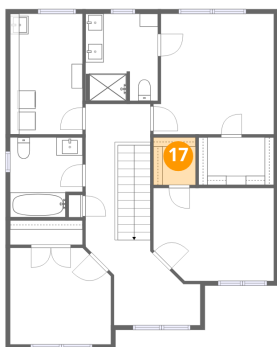
16 Floor 2 - Foyer



Max Dimensions: 11'2" x 9'4"  
Calculated Area: 105 sq. ft  
Included: Yes

Heated: Yes  
Finished: Yes  
Enclosed: Yes  
Contiguous: Yes  
Permitted: Yes  
Wet space: No  
Addition: No  
Conversion: No

17 Floor 3 - W.I.C.

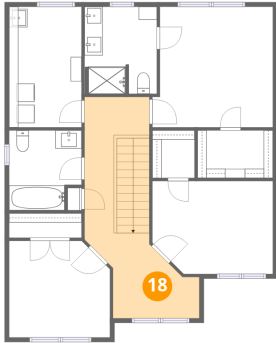


Max Dimensions: 4'7" x 5'3"  
Calculated Area: 24 sq. ft  
Included: Yes

Heated: Yes  
Finished: Yes  
Enclosed: Yes  
Contiguous: Yes  
Permitted: Yes  
Wet space: No  
Addition: No  
Conversion: No

100 Nightingale Lane, Quispamsis, Kings County, New Brunswick, Canada, E2E 0V8

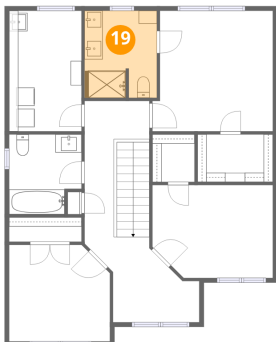
**18** Floor 3 - Hall



Max Dimensions: 9'5" x 24'3"  
Calculated Area: 182 sq. ft  
Included: Yes

Heated: Yes  
Finished: Yes  
Enclosed: Yes  
Contiguous: Yes  
Permitted: Yes  
Wet space: No  
Addition: No  
Conversion: No

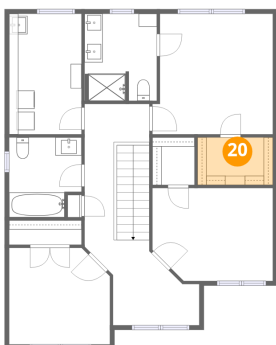
**19** Floor 3 - Bath



Max Dimensions: 7'11" x 9'7"  
Calculated Area: 75 sq. ft  
Included: Yes

Heated: Yes  
Finished: Yes  
Enclosed: Yes  
Contiguous: Yes  
Permitted: Yes  
Wet space: Yes  
Addition: No  
Conversion: No

**20** Floor 3 - W.I.C.

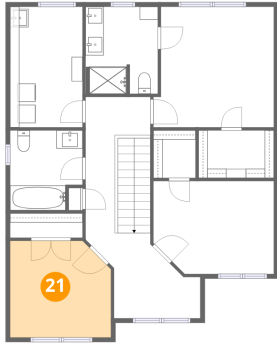


Max Dimensions: 8'3" x 5'3"  
Calculated Area: 43 sq. ft  
Included: Yes

Heated: Yes  
Finished: Yes  
Enclosed: Yes  
Contiguous: Yes  
Permitted: Yes  
Wet space: No  
Addition: No  
Conversion: No

100 Nightingale Lane, Quispamsis, Kings County, New Brunswick, Canada, E2E 0V8

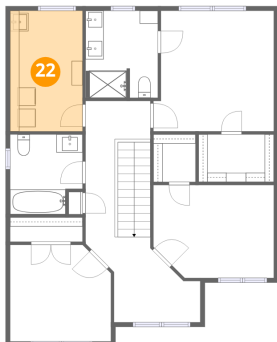
### 21 Floor 3 - Bedroom



Max Dimensions: 11'1" x 10'7"  
Calculated Area: 112 sq. ft  
Included: Yes

Heated: Yes  
Finished: Yes  
Enclosed: Yes  
Contiguous: Yes  
Permitted: Yes  
Wet space: No  
Addition: No  
Conversion: No

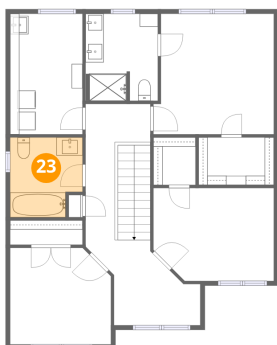
### 22 Floor 3 - Laundry



Max Dimensions: 7'11" x 13'3"  
Calculated Area: 105 sq. ft  
Included: Yes

Heated: Yes  
Finished: Yes  
Enclosed: Yes  
Contiguous: Yes  
Permitted: Yes  
Wet space: No  
Addition: No  
Conversion: No

### 23 Floor 3 - Bath

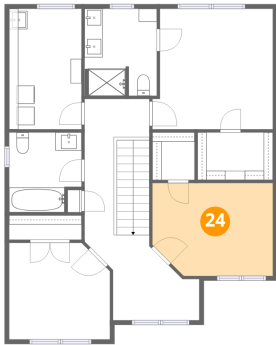


Max Dimensions: 7'11" x 8'9"  
Calculated Area: 64 sq. ft  
Included: Yes

Heated: Yes  
Finished: Yes  
Enclosed: Yes  
Contiguous: Yes  
Permitted: Yes  
Wet space: Yes  
Addition: No  
Conversion: No

100 Nightingale Lane, Quispamsis, Kings County, New Brunswick, Canada, E2E 0V8

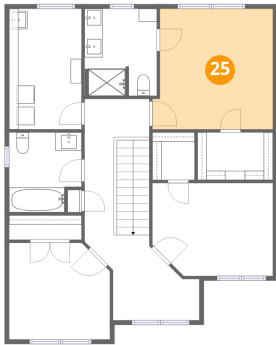
24 Floor 3 - Bedroom



Max Dimensions: 13'3" x 10'2"  
Calculated Area: 129 sq. ft  
Included: Yes

Heated: Yes  
Finished: Yes  
Enclosed: Yes  
Contiguous: Yes  
Permitted: Yes  
Wet space: No  
Addition: No  
Conversion: No

25 Floor 3 - Primary Bedroom



Max Dimensions: 13'3" x 13'3"  
Calculated Area: 167 sq. ft  
Included: Yes

Heated: Yes  
Finished: Yes  
Enclosed: Yes  
Contiguous: Yes  
Permitted: Yes  
Wet space: No  
Addition: No  
Conversion: No