

Home data report

50 Sapphire Lane, North Shore, Moneta, Franklin County, Virginia, United States, 24121



Total Area: 3078 sq. ft

Basement: 939 sq. ft, 1st Floor: 2139 sq. ft

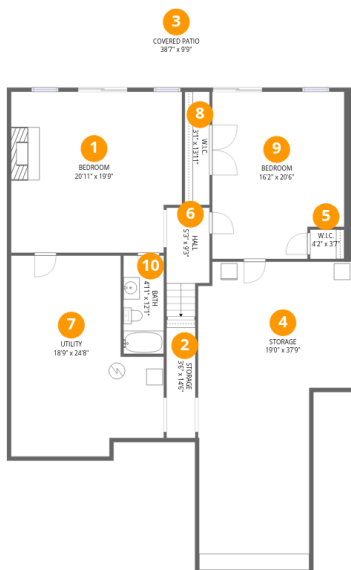
Excluded: Storage 651 sq. ft, Utility 381 sq. ft, Covered patio 377 sq. ft, Garage 512 sq. ft, Screened porch 188 sq. ft, Porch 109 sq. ft, Balcony 182 sq. ft, Walls: 277 sq. ft

Property summary



Home data report

50 Sapphire Lane, North Shore, Moneta, Franklin County, Virginia, United States, 24121



Room dimensions

Floor 1 Below grade

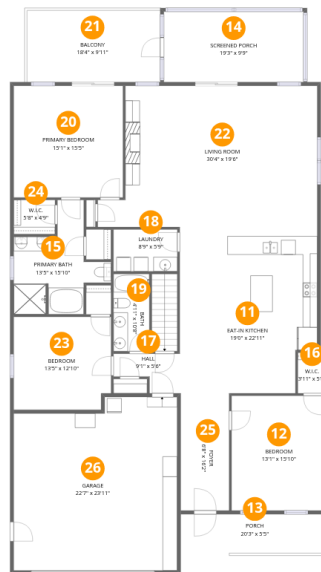
Total:939sqft

Excluded: 1409sqft

#		Dimensions	sqft	Counted as living area
1	Bedroom	20'11" x 19'9"	401 sq. ft	Yes
2	Storage	3'6" x 14'6"	51 sq. ft	No
3	Covered Patio	38'7" x 9'9"	377 sq. ft	No
4	Storage	19'0" x 37'9"	591 sq. ft	No
5	W.I.C.	4'2" x 3'7"	15 sq. ft	Yes
6	Hall	5'3" x 9'3"	63 sq. ft	Yes
7	Utility	18'9" x 24'8"	381 sq. ft	No
8	W.I.C.	3'1" x 13'11"	42 sq. ft	Yes
9	Bedroom	16'2" x 20'6"	314 sq. ft	Yes
10	Bath	4'11" x 12'1"	60 sq. ft	Yes

Home data report

50 Sapphire Lane, North Shore, Moneta, Franklin County, Virginia, United States, 24121



Room dimensions

Floor 2

Total:2139sqft

Excluded: 991sqft

#		Dimensions	sqft	Counted as living area
11	Eat-in Kitchen	19'0" x 22'11"	418 sq. ft	Yes
12	Bedroom	13'1" x 15'10"	207 sq. ft	Yes
13	Porch	20'3" x 5'5"	109 sq. ft	No
14	Screened Porch	19'3" x 9'9"	188 sq. ft	No
15	Primary Bath	13'5" x 15'10"	132 sq. ft	Yes
16	W.I.C.	3'11" x 5'8"	22 sq. ft	Yes
17	Hall	9'1" x 5'6"	39 sq. ft	Yes
18	Laundry	8'9" x 5'9"	51 sq. ft	Yes
19	Bath	4'11" x 10'8"	53 sq. ft	Yes
20	Primary Bedroom	15'1" x 15'5"	233 sq. ft	Yes
21	Balcony	18'4" x 9'11"	182 sq. ft	No

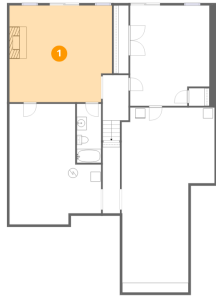
Home data report

**50 Sapphire Lane, North Shore, Moneta, Franklin County,
Virginia, United States, 24121**

#		Dimensions	sqft	Counted as living area
22	Living Room	30'4" x 19'6"	531 sq. ft	Yes
23	Bedroom	13'5" x 12'10"	169 sq. ft	Yes
24	W.I.C.	5'8" x 4'9"	27 sq. ft	Yes
25	Foyer	6'8" x 16'2"	108 sq. ft	Yes
26	Garage	22'7" x 23'11"	512 sq. ft	No

50 Sapphire Lane, North Shore, Moneta, Franklin County,
Virginia, United States, 24121

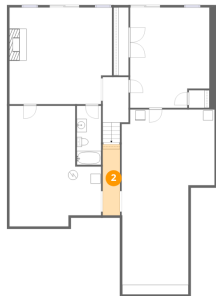
1 Floor 1 - Bedroom



Dimensions: 20'11" x 19'9"
Area: 401 sq. ft
Counted as living area: Yes

Heated: Yes
Finished: Yes
Enclosed: Yes
Contiguous: Yes
Permitted: Yes
Wet space: No
Addition: No
Conversion: No

2 Floor 1 - Storage

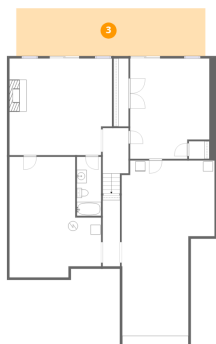


Dimensions: 3'6" x 14'6"
Area: 51 sq. ft
Counted as living area: No

Heated: No
Finished: No
Enclosed: No
Contiguous: Yes
Permitted: Yes
Wet space: No
Addition: No
Conversion: No

50 Sapphire Lane, North Shore, Moneta, Franklin County,
Virginia, United States, 24121

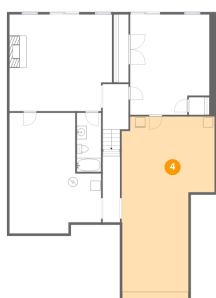
3 Floor 1 - Covered Patio



Dimensions: 38'7" x 9'9"
Area: 377 sq. ft
Counted as living area: No

Heated: No
Finished: No
Enclosed: No
Contiguous: Yes
Permitted: Yes
Wet space: No
Addition: No
Conversion: No

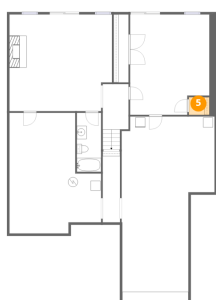
4 Floor 1 - Storage



Dimensions: 19'0" x 37'9"
Area: 591 sq. ft
Counted as living area: No

Heated: No
Finished: No
Enclosed: No
Contiguous: Yes
Permitted: Yes
Wet space: No
Addition: No
Conversion: No

5 Floor 1 - W.I.C.

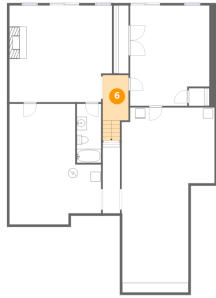


Dimensions: 4'2" x 3'7"
Area: 15 sq. ft
Counted as living area: Yes

Heated: Yes
Finished: Yes
Enclosed: Yes
Contiguous: Yes
Permitted: Yes
Wet space: No
Addition: No
Conversion: No

50 Sapphire Lane, North Shore, Moneta, Franklin County,
Virginia, United States, 24121

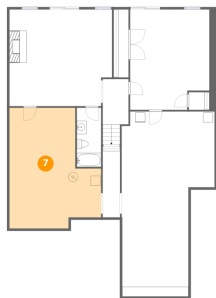
6 Floor 1 - Hall



Dimensions: 5'3" x 9'3"
Area: 63 sq. ft
Counted as living area: Yes

Heated: Yes
Finished: Yes
Enclosed: Yes
Contiguous: Yes
Permitted: Yes
Wet space: No
Addition: No
Conversion: No

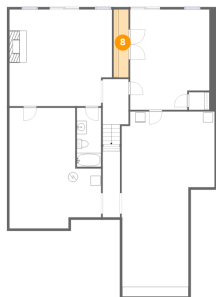
7 Floor 1 - Utility



Dimensions: 18'9" x 24'8"
Area: 381 sq. ft
Counted as living area: No

Heated: Yes
Finished: No
Enclosed: Yes
Contiguous: Yes
Permitted: Yes
Wet space: No
Addition: No
Conversion: No

8 Floor 1 - W.I.C.

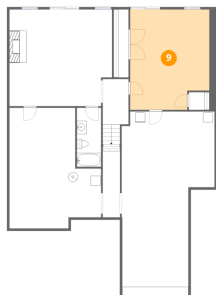


Dimensions: 3'1" x 13'11"
Area: 42 sq. ft
Counted as living area: Yes

Heated: Yes
Finished: Yes
Enclosed: Yes
Contiguous: Yes
Permitted: Yes
Wet space: No
Addition: No
Conversion: No

50 Sapphire Lane, North Shore, Moneta, Franklin County, Virginia, United States, 24121

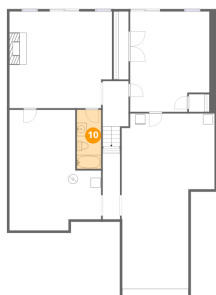
9 Floor 1 - Bedroom



Dimensions: 16'2" x 20'6"
Area: 314 sq. ft
Counted as living area: Yes

Heated: Yes
Finished: Yes
Enclosed: Yes
Contiguous: Yes
Permitted: Yes
Wet space: No
Addition: No
Conversion: No

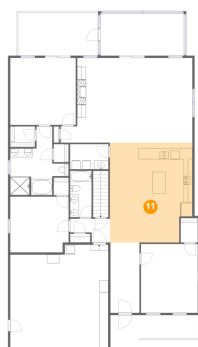
10 Floor 1 - Bath



Dimensions: 4'11" x 12'1"
Area: 60 sq. ft
Counted as living area: Yes

Heated: Yes
Finished: Yes
Enclosed: Yes
Contiguous: Yes
Permitted: Yes
Wet space: Yes
Addition: No
Conversion: No

11 Floor 2 - Eat-in Kitchen



Dimensions: 19'0" x 22'11"
Area: 418 sq. ft
Counted as living area: Yes

Heated: Yes
Finished: Yes
Enclosed: Yes
Contiguous: Yes
Permitted: Yes
Wet space: No
Addition: No
Conversion: No

50 Sapphire Lane, North Shore, Moneta, Franklin County,
Virginia, United States, 24121

12 Floor 2 - Bedroom



Dimensions: 13'1" x 15'10"
Area: 207 sq. ft
Counted as living area: Yes

Heated: Yes
Finished: Yes
Enclosed: Yes
Contiguous: Yes
Permitted: Yes
Wet space: No
Addition: No
Conversion: No

13 Floor 2 - Porch



Dimensions: 20'3" x 5'5"
Area: 109 sq. ft
Counted as living area: No

Heated: No
Finished: No
Enclosed: No
Contiguous: Yes
Permitted: Yes
Wet space: No
Addition: No
Conversion: No

14 Floor 2 - Screened Porch

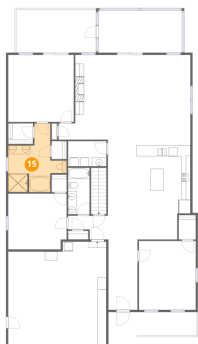


Dimensions: 19'3" x 9'9"
Area: 188 sq. ft
Counted as living area: No

Heated: No
Finished: No
Enclosed: No
Contiguous: Yes
Permitted: Yes
Wet space: No
Addition: No
Conversion: No

50 Sapphire Lane, North Shore, Moneta, Franklin County,
Virginia, United States, 24121

15 Floor 2 - Primary Bath



Dimensions: 13'5" x 15'10"
Area: 132 sq. ft
Counted as living area: Yes

Heated: Yes
Finished: Yes
Enclosed: Yes
Contiguous: Yes
Permitted: Yes
Wet space: Yes
Addition: No
Conversion: No

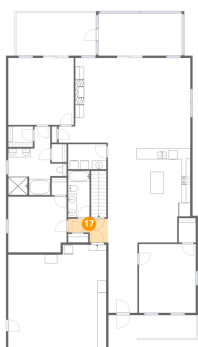
16 Floor 2 - W.I.C.



Dimensions: 3'11" x 5'8"
Area: 22 sq. ft
Counted as living area: Yes

Heated: Yes
Finished: Yes
Enclosed: Yes
Contiguous: Yes
Permitted: Yes
Wet space: No
Addition: No
Conversion: No

17 Floor 2 - Hall



Dimensions: 9'1" x 5'6"
Area: 39 sq. ft
Counted as living area: Yes

Heated: Yes
Finished: Yes
Enclosed: Yes
Contiguous: Yes
Permitted: Yes
Wet space: No
Addition: No
Conversion: No

50 Sapphire Lane, North Shore, Moneta, Franklin County,
Virginia, United States, 24121

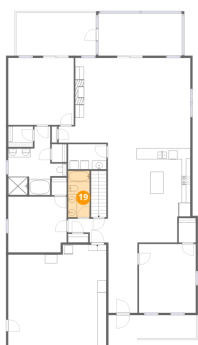
18 Floor 2 - Laundry



Dimensions: 8'9" x 5'9"
Area: 51 sq. ft
Counted as living area: Yes

Heated: Yes
Finished: Yes
Enclosed: Yes
Contiguous: Yes
Permitted: Yes
Wet space: No
Addition: No
Conversion: No

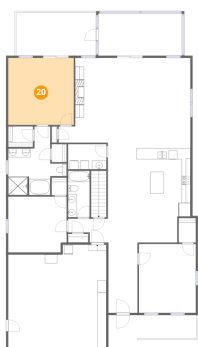
19 Floor 2 - Bath



Dimensions: 4'11" x 10'8"
Area: 53 sq. ft
Counted as living area: Yes

Heated: Yes
Finished: Yes
Enclosed: Yes
Contiguous: Yes
Permitted: Yes
Wet space: Yes
Addition: No
Conversion: No

20 Floor 2 - Primary Bedroom



Dimensions: 15'1" x 15'5"
Area: 233 sq. ft
Counted as living area: Yes

Heated: Yes
Finished: Yes
Enclosed: Yes
Contiguous: Yes
Permitted: Yes
Wet space: No
Addition: No
Conversion: No

50 Sapphire Lane, North Shore, Moneta, Franklin County,
Virginia, United States, 24121

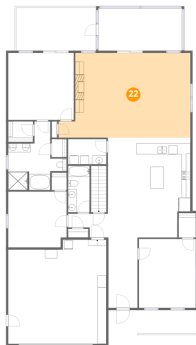
21 Floor 2 - Balcony



Dimensions: 18'4" x 9'11"
Area: 182 sq. ft
Counted as living area: No

Heated: No
Finished: No
Enclosed: No
Contiguous: Yes
Permitted: Yes
Wet space: No
Addition: No
Conversion: No

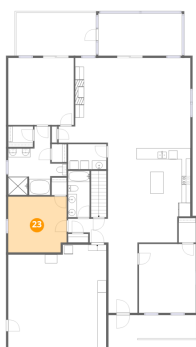
22 Floor 2 - Living Room



Dimensions: 30'4" x 19'6"
Area: 531 sq. ft
Counted as living area: Yes

Heated: Yes
Finished: Yes
Enclosed: Yes
Contiguous: Yes
Permitted: Yes
Wet space: No
Addition: No
Conversion: No

23 Floor 2 - Bedroom



Dimensions: 13'5" x 12'10"
Area: 169 sq. ft
Counted as living area: Yes

Heated: Yes
Finished: Yes
Enclosed: Yes
Contiguous: Yes
Permitted: Yes
Wet space: No
Addition: No
Conversion: No

50 Sapphire Lane, North Shore, Moneta, Franklin County,
Virginia, United States, 24121

24 Floor 2 - W.I.C.



Dimensions: 5'8" x 4'9"
Area: 27 sq. ft
Counted as living area: Yes

Heated: Yes
Finished: Yes
Enclosed: Yes
Contiguous: Yes
Permitted: Yes
Wet space: No
Addition: No
Conversion: No

25 Floor 2 - Foyer



Dimensions: 6'8" x 16'2"
Area: 108 sq. ft
Counted as living area: Yes

Heated: Yes
Finished: Yes
Enclosed: Yes
Contiguous: Yes
Permitted: Yes
Wet space: No
Addition: No
Conversion: No

26 Floor 2 - Garage



Dimensions: 22'7" x 23'11"
Area: 512 sq. ft
Counted as living area: No

Heated: No
Finished: No
Enclosed: Yes
Contiguous: Yes
Permitted: Yes
Wet space: No
Addition: No
Conversion: No