

Home data report

3019 W 111th Dr, Westminster, CO, US



Total Area: 3486 sq. ft

Basement: 1250 sq. ft, 1st Floor: 2236 sq. ft

Excluded: Utility 292 sq. ft, Patio 64 sq. ft, Garage 740 sq. ft, Porch 181 sq. ft, Deck 411 sq. ft, Walls: 260 sq. ft

Property summary

 **2** Floors

 **4** Bedrooms

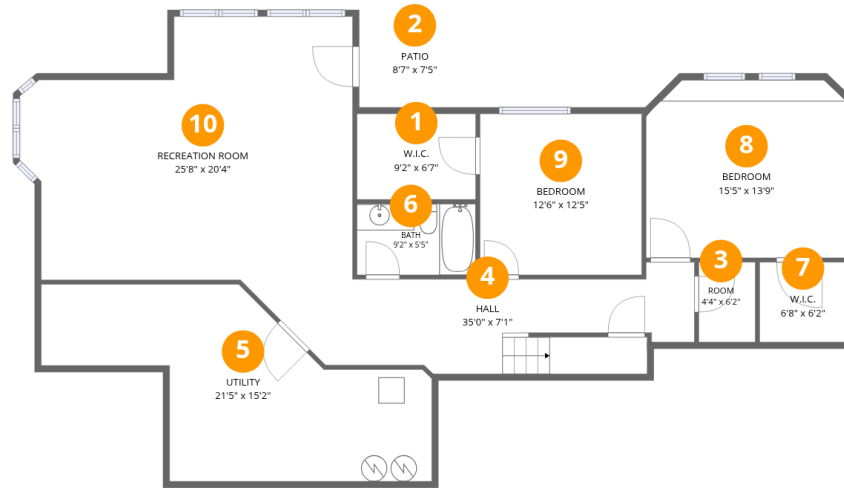
 **3** Bathrooms

Home data report

3019 W 111th Dr,Westminster,CO,US

 **1**
Half baths

 **1**
Garages



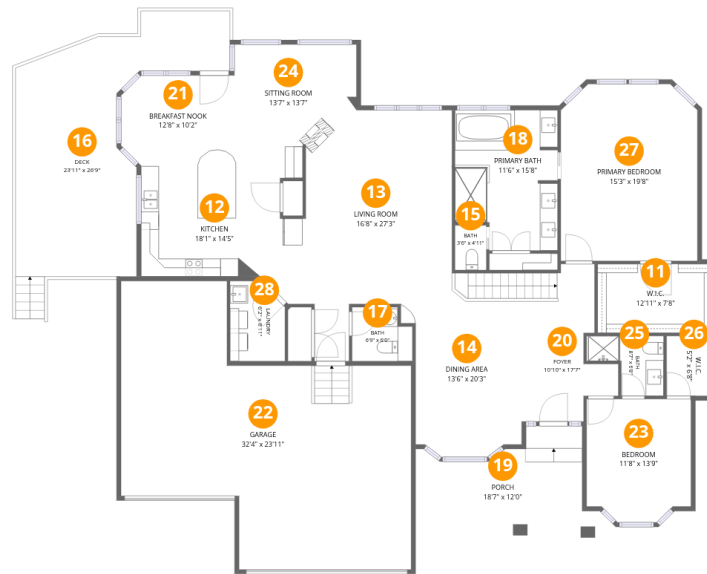
Room dimensions

Floor 1 Below grade

Total: 1250 sqft

Excluded: 356 sqft

#		Dimensions	sqft	Counted as living area
1	W.I.C.	9'2" x 6'7"	60 sq. ft	Yes
2	Patio	8'7" x 7'5"	64 sq. ft	No
3	Room	4'4" x 6'2"	27 sq. ft	Yes
4	Hall	35'0" x 7'1"	217 sq. ft	Yes
5	Utility	21'5" x 15'2"	292 sq. ft	No
6	Bath	9'2" x 5'5"	50 sq. ft	Yes
7	W.I.C.	6'8" x 6'2"	41 sq. ft	Yes
8	Bedroom	15'5" x 13'9"	206 sq. ft	Yes
9	Bedroom	12'6" x 12'5"	155 sq. ft	Yes
10	Recreation Room	25'8" x 20'4"	448 sq. ft	Yes



Room dimensions

Floor 2

Total: 2236 sqft

Excluded: 1332 sqft

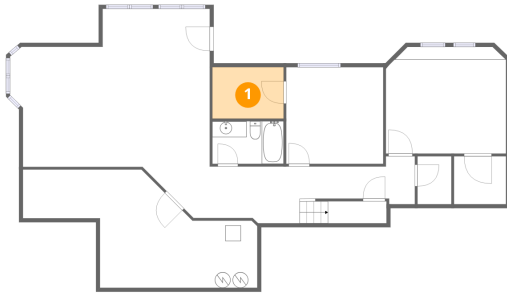
#		Dimensions	sqft	Counted as living area
11	W.I.C.	12'11" x 7'8"	99 sq. ft	Yes
12	Kitchen	18'1" x 14'5"	220 sq. ft	Yes
13	Living Room	16'8" x 27'3"	361 sq. ft	Yes
14	Dining Area	13'6" x 20'3"	235 sq. ft	Yes
15	Bath	3'6" x 4'11"	17 sq. ft	Yes
16	Deck	23'11" x 26'9"	411 sq. ft	No
17	Bath	6'9" x 6'0"	37 sq. ft	Yes
18	Primary Bath	11'6" x 15'8"	166 sq. ft	Yes
19	Porch	18'7" x 12'0"	181 sq. ft	No
20	Foyer	10'10" x 17'7"	140 sq. ft	Yes
21	Breakfast Nook	12'8" x 10'2"	123 sq. ft	Yes

Home data report

3019 W 111th Dr,Westminster,CO,US

#		Dimensions	sqft	Counted as living area
22	Garage	32'4" x 23'11"	740 sq. ft	No
23	Bedroom	11'8" x 13'9"	151 sq. ft	Yes
24	Sitting Room	13'7" x 13'7"	162 sq. ft	Yes
25	Bath	8'7" x 6'8"	42 sq. ft	Yes
26	W.I.C.	5'2" x 6'8"	35 sq. ft	Yes
27	Primary Bedroom	15'3" x 19'8"	292 sq. ft	Yes
28	Laundry	6'2" x 8'11"	51 sq. ft	Yes

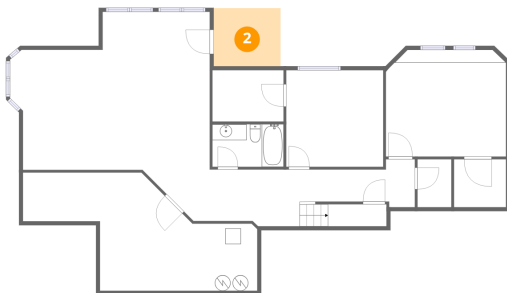
1 Floor 1 - W.I.C.



Dimensions: 9'2" x 6'7"
Area: 60 sq. ft
Counted as living area: Yes

Heated: Yes
Finished: Yes
Enclosed: Yes
Contiguous: Yes
Permitted: Yes
Wet space: No
Addition: No
Conversion: No

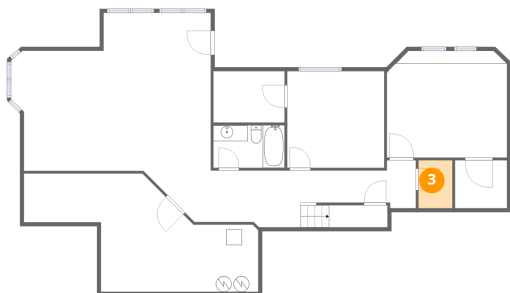
2 Floor 1 - Patio



Dimensions: 8'7" x 7'5"
Area: 64 sq. ft
Counted as living area: No

Heated: No
Finished: No
Enclosed: No
Contiguous: Yes
Permitted: Yes
Wet space: No
Addition: No
Conversion: No

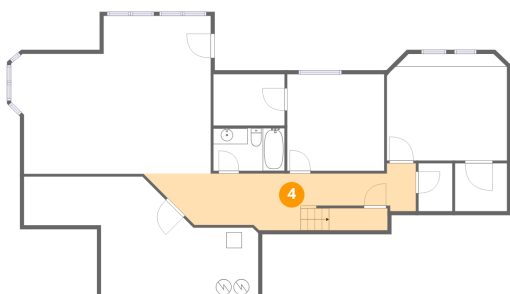
3 Floor 1 - Room



Dimensions: 4'4" x 6'2"
Area: 27 sq. ft
Counted as living area: Yes

Heated: Yes
Finished: Yes
Enclosed: Yes
Contiguous: Yes
Permitted: Yes
Wet space: No
Addition: No
Conversion: No

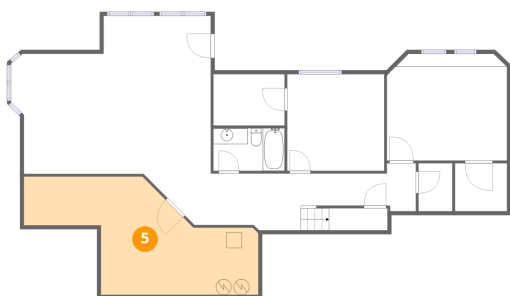
4 Floor 1 - Hall



Dimensions: 35'0" x 7'1"
Area: 217 sq. ft
Counted as living area: Yes

Heated: Yes
Finished: Yes
Enclosed: Yes
Contiguous: Yes
Permitted: Yes
Wet space: No
Addition: No
Conversion: No

5 Floor 1 - Utility



Dimensions: 21'5" x 15'2"
Area: 292 sq. ft
Counted as living area: No

Heated: Yes
Finished: No
Enclosed: Yes
Contiguous: Yes
Permitted: Yes
Wet space: No
Addition: No
Conversion: No

6 Floor 1 - Bath



Dimensions: 9'2" x 5'5"
Area: 50 sq. ft
Counted as living area: Yes

Heated: Yes
Finished: Yes
Enclosed: Yes
Contiguous: Yes
Permitted: Yes
Wet space: Yes
Addition: No
Conversion: No

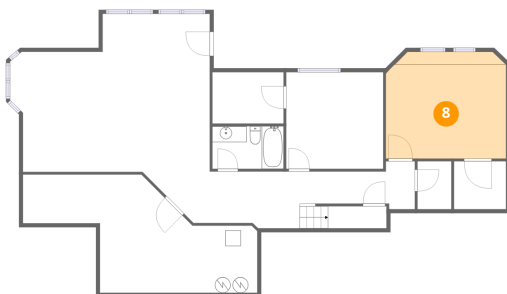
7 Floor 1 - W.I.C.



Dimensions: 6'8" x 6'2"
Area: 41 sq. ft
Counted as living area: Yes

Heated: Yes
Finished: Yes
Enclosed: Yes
Contiguous: Yes
Permitted: Yes
Wet space: No
Addition: No
Conversion: No

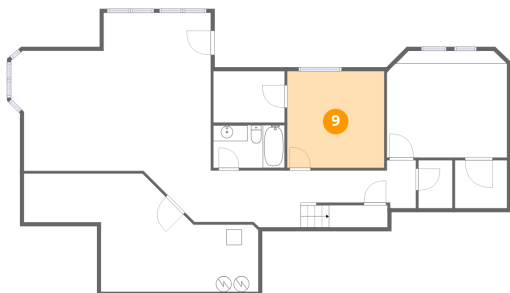
8 Floor 1 - Bedroom



Dimensions: 15'5" x 13'9"
Area: 206 sq. ft
Counted as living area: Yes

Heated: Yes
Finished: Yes
Enclosed: Yes
Contiguous: Yes
Permitted: Yes
Wet space: No
Addition: No
Conversion: No

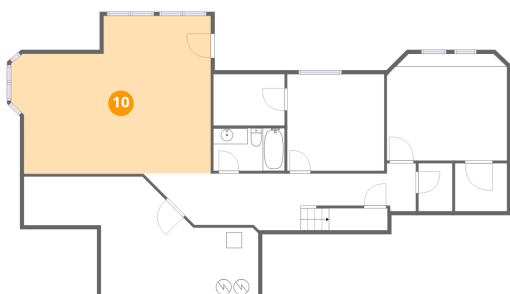
9 Floor 1 - Bedroom



Dimensions: 12'6" x 12'5"
Area: 155 sq. ft
Counted as living area: Yes

Heated: Yes
Finished: Yes
Enclosed: Yes
Contiguous: Yes
Permitted: Yes
Wet space: No
Addition: No
Conversion: No

10 Floor 1 - Recreation Room



Dimensions: 25'8" x 20'4"
Area: 448 sq. ft
Counted as living area: Yes

Heated: Yes
Finished: Yes
Enclosed: Yes
Contiguous: Yes
Permitted: Yes
Wet space: No
Addition: No
Conversion: No

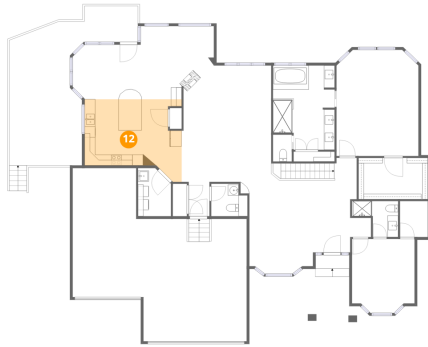
11 Floor 2 - W.I.C.



Dimensions: 12'11" x 7'8"
Area: 99 sq. ft
Counted as living area: Yes

Heated: Yes
Finished: Yes
Enclosed: Yes
Contiguous: Yes
Permitted: Yes
Wet space: No
Addition: No
Conversion: No

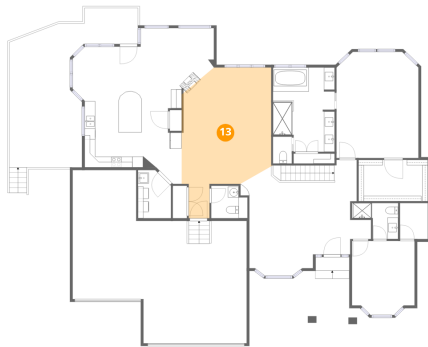
12 Floor 2 - Kitchen



Dimensions: 18'1" x 14'5"
Area: 220 sq. ft
Counted as living area: Yes

Heated: Yes
Finished: Yes
Enclosed: Yes
Contiguous: Yes
Permitted: Yes
Wet space: No
Addition: No
Conversion: No

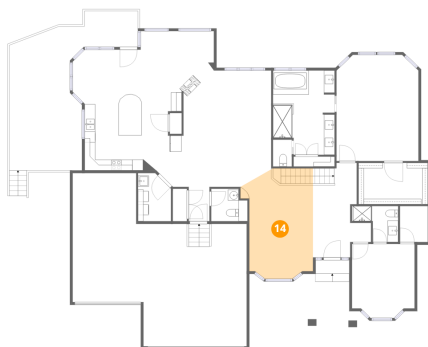
13 Floor 2 - Living Room



Dimensions: 16'8" x 27'3"
Area: 361 sq. ft
Counted as living area: Yes

Heated: Yes
Finished: Yes
Enclosed: Yes
Contiguous: Yes
Permitted: Yes
Wet space: No
Addition: No
Conversion: No

14 Floor 2 - Dining Area



Dimensions: 13'6" x 20'3"
Area: 235 sq. ft
Counted as living area: Yes

Heated: Yes
Finished: Yes
Enclosed: Yes
Contiguous: Yes
Permitted: Yes
Wet space: No
Addition: No
Conversion: No

15 Floor 2 - Bath



Dimensions: 3'6" x 4'11"
Area: 17 sq. ft
Counted as living area: Yes

Heated: Yes
Finished: Yes
Enclosed: Yes
Contiguous: Yes
Permitted: Yes
Wet space: Yes
Addition: No
Conversion: No

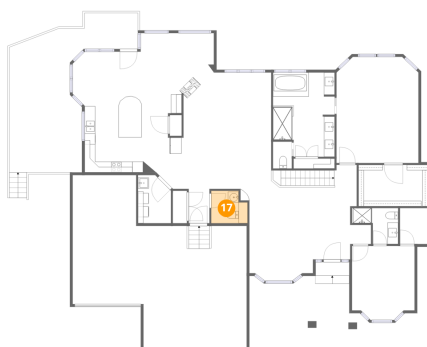
16 Floor 2 - Deck



Dimensions: 23'11" x 26'9"
Area: 411 sq. ft
Counted as living area: No

Heated: No
Finished: No
Enclosed: No
Contiguous: Yes
Permitted: Yes
Wet space: No
Addition: No
Conversion: No

17 Floor 2 - Bath



Dimensions: 6'9" x 6'0"
Area: 37 sq. ft
Counted as living area: Yes

Heated: Yes
Finished: Yes
Enclosed: Yes
Contiguous: Yes
Permitted: Yes
Wet space: Yes
Addition: No
Conversion: No

18 Floor 2 - Primary Bath



Dimensions: 11'6" x 15'8"
Area: 166 sq. ft
Counted as living area: Yes

Heated: Yes
Finished: Yes
Enclosed: Yes
Contiguous: Yes
Permitted: Yes
Wet space: Yes
Addition: No
Conversion: No

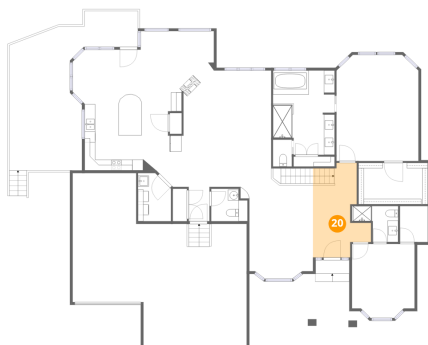
19 Floor 2 - Porch



Dimensions: 18'7" x 12'0"
Area: 181 sq. ft
Counted as living area: No

Heated: No
Finished: No
Enclosed: No
Contiguous: Yes
Permitted: Yes
Wet space: No
Addition: No
Conversion: No

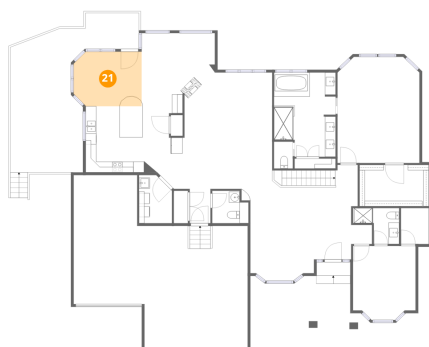
20 Floor 2 - Foyer



Dimensions: 10'10" x 17'7"
Area: 140 sq. ft
Counted as living area: Yes

Heated: Yes
Finished: Yes
Enclosed: Yes
Contiguous: Yes
Permitted: Yes
Wet space: No
Addition: No
Conversion: No

21 Floor 2 - Breakfast Nook



Dimensions: 12'8" x 10'2"
Area: 123 sq. ft
Counted as living area: Yes

Heated: Yes
Finished: Yes
Enclosed: Yes
Contiguous: Yes
Permitted: Yes
Wet space: No
Addition: No
Conversion: No

22 Floor 2 - Garage



Dimensions: 32'4" x 23'11"
Area: 740 sq. ft
Counted as living area: No

Heated: No
Finished: No
Enclosed: Yes
Contiguous: Yes
Permitted: Yes
Wet space: No
Addition: No
Conversion: No

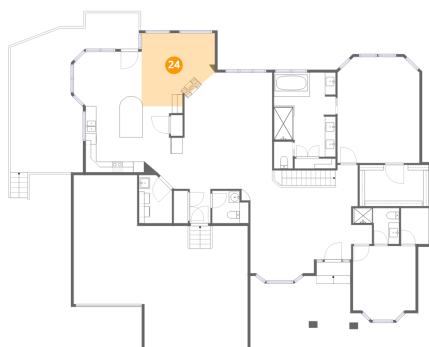
23 Floor 2 - Bedroom



Dimensions: 11'8" x 13'9"
Area: 151 sq. ft
Counted as living area: Yes

Heated: Yes
Finished: Yes
Enclosed: Yes
Contiguous: Yes
Permitted: Yes
Wet space: No
Addition: No
Conversion: No

24 Floor 2 - Sitting Room



Dimensions: 13'7" x 13'7"
Area: 162 sq. ft
Counted as living area: Yes

Heated: Yes
Finished: Yes
Enclosed: Yes
Contiguous: Yes
Permitted: Yes
Wet space: No
Addition: No
Conversion: No

25 Floor 2 - Bath



Dimensions: 8'7" x 6'8"
Area: 42 sq. ft
Counted as living area: Yes

Heated: Yes
Finished: Yes
Enclosed: Yes
Contiguous: Yes
Permitted: Yes
Wet space: Yes
Addition: No
Conversion: No

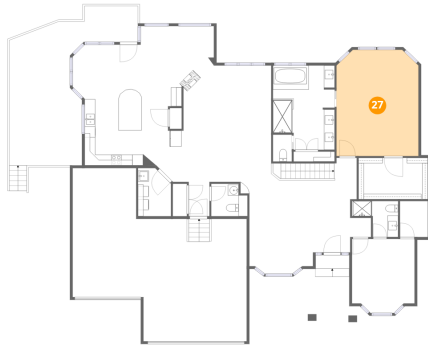
26 Floor 2 - W.I.C.



Dimensions: 5'2" x 6'8"
Area: 35 sq. ft
Counted as living area: No

Heated: Yes
Finished: Yes
Enclosed: Yes
Contiguous: No
Permitted: Yes
Wet space: No
Addition: No
Conversion: No

27 Floor 2 - Primary Bedroom



Dimensions: 15'3" x 19'8"
Area: 292 sq. ft
Counted as living area: Yes

Heated: Yes
Finished: Yes
Enclosed: Yes
Contiguous: Yes
Permitted: Yes
Wet space: No
Addition: No
Conversion: No

28 Floor 2 - Laundry



Dimensions: 6'2" x 8'11"
Area: 51 sq. ft
Counted as living area: Yes

Heated: Yes
Finished: Yes
Enclosed: Yes
Contiguous: Yes
Permitted: Yes
Wet space: No
Addition: No
Conversion: No