

Home data report

2138 Derby Court, Wheaton, DuPage County, Illinois, United States, 60189



Total Area: 1882 sq. ft

1st Floor: 1260 sq. ft, 2nd Floor: 622 sq. ft

Excluded: Garage 376 sq. ft, Embedded window 8 sq. ft, Walls: 160 sq. ft

Property summary

 **2** Floors

 **4** Bedrooms

 **3** Bathrooms

Home data report

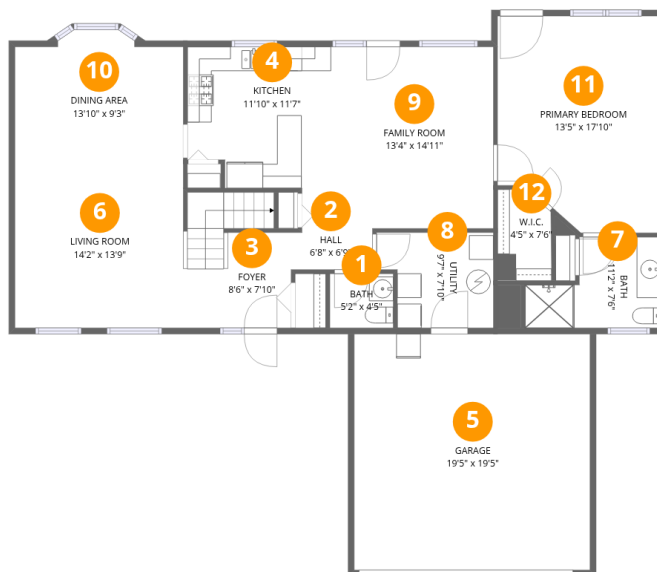
2138 Derby Court, Wheaton, DuPage County, Illinois, United States, 60189

 **1**
Half baths

 **1**
Garages

Home data report

2138 Derby Court, Wheaton, DuPage County, Illinois, United States, 60189



Room dimensions

Floor 1

Total:1260sqft Excluded: 384sqft

#		Dimensions	sqft	Counted as living area
1	Bath	5'2" x 4'5"	23 sq. ft	Yes
2	Hall	6'8" x 6'9"	45 sq. ft	Yes
3	Foyer	8'6" x 7'10"	67 sq. ft	Yes
4	Kitchen	11'10" x 11'7"	137 sq. ft	Yes
5	Garage	19'5" x 19'5"	376 sq. ft	No
6	Living Room	14'2" x 13'9"	195 sq. ft	Yes
7	Bath	11'2" x 7'6"	84 sq. ft	Yes
8	Utility	9'7" x 7'10"	75 sq. ft	Yes
9	Family Room	13'4" x 14'11"	199 sq. ft	Yes
10	Dining Area	13'10" x 9'3"	128 sq. ft	Yes
11	Primary Bedroom	13'5" x 17'10"	238 sq. ft	Yes

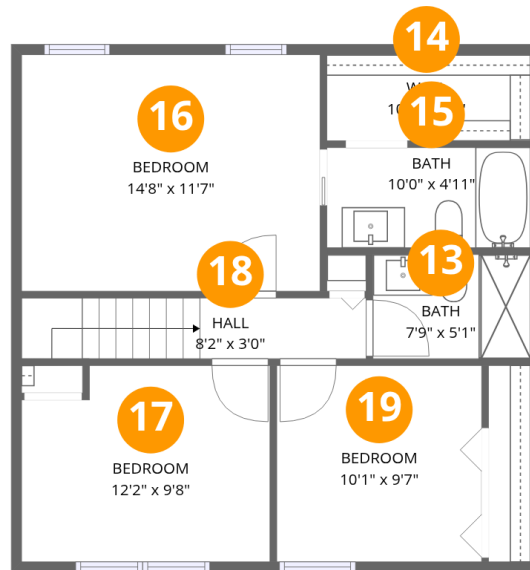
Home data report

2138 Derby Court, Wheaton, DuPage County, Illinois, United States, 60189

#		Dimensions	sqft	Counted as living area
12	W.I.C.	4'5" x 7'6"	33 sq. ft	Yes

Home data report

2138 Derby Court, Wheaton, DuPage County, Illinois, United States, 60189



Room dimensions

Floor 2

Total:622sqft Excluded: 0sqft

#		Dimensions	sqft	Counted as living area
13	Bath	7'9" x 5'1"	40 sq. ft	Yes
14	W.I.C.	10'0" x 4'3"	42 sq. ft	Yes
15	Bath	10'0" x 4'11"	49 sq. ft	Yes
16	Bedroom	14'8" x 11'7"	170 sq. ft	Yes
17	Bedroom	12'2" x 9'8"	118 sq. ft	Yes
18	Hall	8'2" x 3'0"	24 sq. ft	Yes
19	Bedroom	10'1" x 9'7"	97 sq. ft	Yes

2138 Derby Court, Wheaton, DuPage County, Illinois, United States, 60189

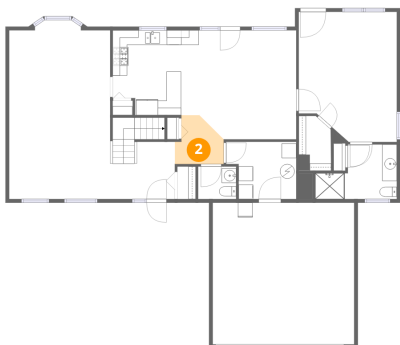
1 Floor 1 - Bath



Dimensions: 5'2" x 4'5"
Area: 23 sq. ft
Counted as living area: Yes

Heated: Yes
Finished: Yes
Enclosed: Yes
Contiguous: Yes
Permitted: Yes
Wet space: Yes
Addition: No
Conversion: No

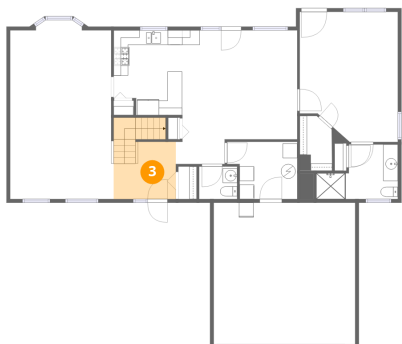
2 Floor 1 - Hall



Dimensions: 6'8" x 6'9"
Area: 45 sq. ft
Counted as living area: Yes

Heated: Yes
Finished: Yes
Enclosed: Yes
Contiguous: Yes
Permitted: Yes
Wet space: No
Addition: No
Conversion: No

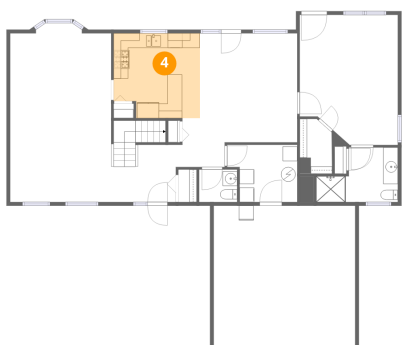
3 Floor 1 - Foyer



Dimensions: 8'6" x 7'10"
Area: 67 sq. ft
Counted as living area: Yes

Heated: Yes
Finished: Yes
Enclosed: Yes
Contiguous: Yes
Permitted: Yes
Wet space: No
Addition: No
Conversion: No

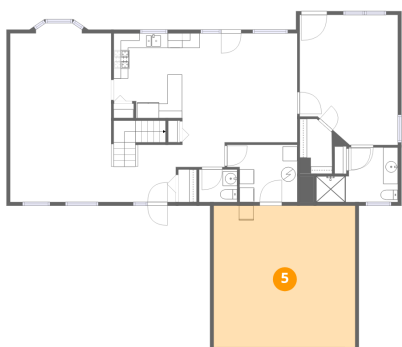
4 Floor 1 - Kitchen



Dimensions: 11'10" x 11'7"
Area: 137 sq. ft
Counted as living area: Yes

Heated: Yes
Finished: Yes
Enclosed: Yes
Contiguous: Yes
Permitted: Yes
Wet space: No
Addition: No
Conversion: No

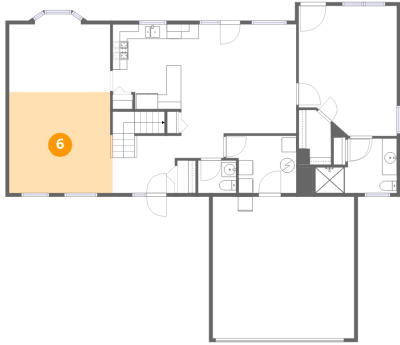
5 Floor 1 - Garage



Dimensions: 19'5" x 19'5"
Area: 376 sq. ft
Counted as living area: No

Heated: No
Finished: No
Enclosed: Yes
Contiguous: Yes
Permitted: Yes
Wet space: No
Addition: No
Conversion: No

6 Floor 1 - Living Room



Dimensions: 14'2" x 13'9"
Area: 195 sq. ft
Counted as living area: Yes

Heated: Yes
Finished: Yes
Enclosed: Yes
Contiguous: Yes
Permitted: Yes
Wet space: No
Addition: No
Conversion: No

7 Floor 1 - Bath



Dimensions: 11'2" x 7'6"
Area: 84 sq. ft
Counted as living area: Yes

Heated: Yes
Finished: Yes
Enclosed: Yes
Contiguous: Yes
Permitted: Yes
Wet space: Yes
Addition: No
Conversion: No

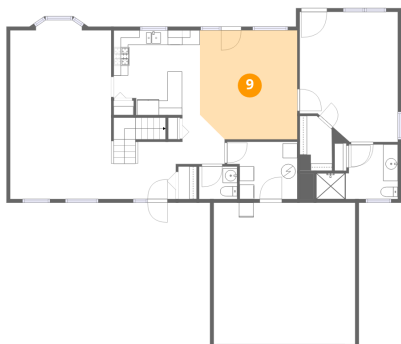
8 Floor 1 - Utility



Dimensions: 9'7" x 7'10"
Area: 75 sq. ft
Counted as living area: Yes

Heated: Yes
Finished: Yes
Enclosed: Yes
Contiguous: Yes
Permitted: Yes
Wet space: No
Addition: No
Conversion: No

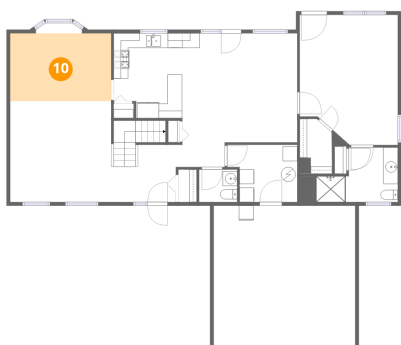
9 Floor 1 - Family Room



Dimensions: 13'4" x 14'11"
Area: 199 sq. ft
Counted as living area: Yes

Heated: Yes
Finished: Yes
Enclosed: Yes
Contiguous: Yes
Permitted: Yes
Wet space: No
Addition: No
Conversion: No

10 Floor 1 - Dining Area



Dimensions: 13'10" x 9'3"
Area: 128 sq. ft
Counted as living area: Yes

Heated: Yes
Finished: Yes
Enclosed: Yes
Contiguous: Yes
Permitted: Yes
Wet space: No
Addition: No
Conversion: No

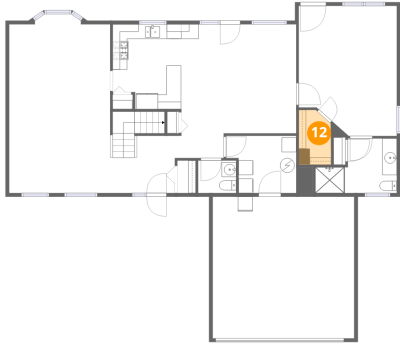
11 Floor 1 - Primary Bedroom



Dimensions: 13'5" x 17'10"
Area: 238 sq. ft
Counted as living area: Yes

Heated: Yes
Finished: Yes
Enclosed: Yes
Contiguous: Yes
Permitted: Yes
Wet space: No
Addition: No
Conversion: No

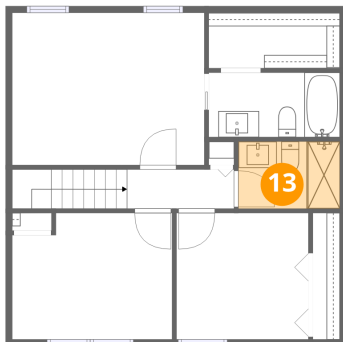
12 Floor 1 - W.I.C.



Dimensions: 4'5" x 7'6"
Area: 33 sq. ft
Counted as living area: Yes

Heated: Yes
Finished: Yes
Enclosed: Yes
Contiguous: Yes
Permitted: Yes
Wet space: No
Addition: No
Conversion: No

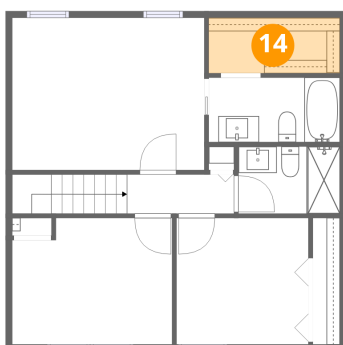
13 Floor 2 - Bath



Dimensions: 7'9" x 5'1"
Area: 40 sq. ft
Counted as living area: Yes

Heated: Yes
Finished: Yes
Enclosed: Yes
Contiguous: Yes
Permitted: Yes
Wet space: Yes
Addition: No
Conversion: No

14 Floor 2 - W.I.C.

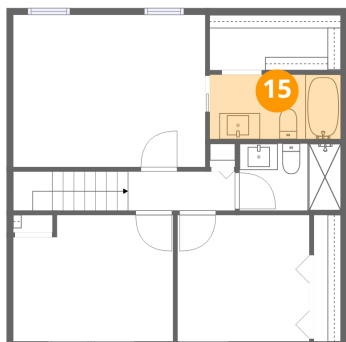


Dimensions: 10'0" x 4'3"
Area: 42 sq. ft
Counted as living area: Yes

Heated: Yes
Finished: Yes
Enclosed: Yes
Contiguous: Yes
Permitted: Yes
Wet space: No
Addition: No
Conversion: No

2138 Derby Court, Wheaton, DuPage County, Illinois, United States, 60189

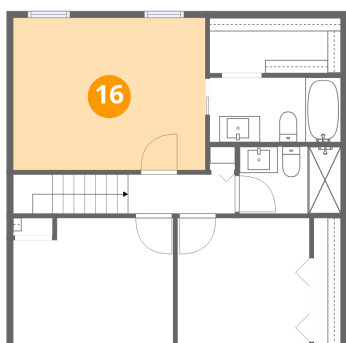
15 Floor 2 - Bath



Dimensions: 10'0" x 4'11"
Area: 49 sq. ft
Counted as living area: Yes

Heated: Yes
Finished: Yes
Enclosed: Yes
Contiguous: Yes
Permitted: Yes
Wet space: Yes
Addition: No
Conversion: No

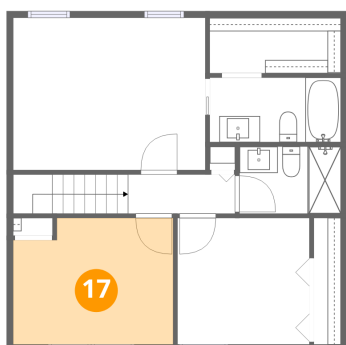
16 Floor 2 - Bedroom



Dimensions: 14'8" x 11'7"
Area: 170 sq. ft
Counted as living area: Yes

Heated: Yes
Finished: Yes
Enclosed: Yes
Contiguous: Yes
Permitted: Yes
Wet space: No
Addition: No
Conversion: No

17 Floor 2 - Bedroom

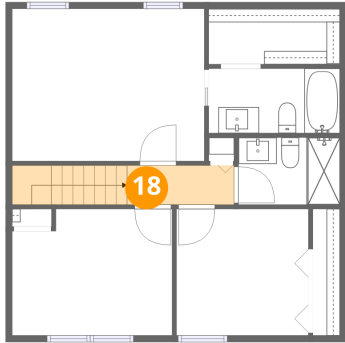


Dimensions: 12'2" x 9'8"
Area: 118 sq. ft
Counted as living area: Yes

Heated: Yes
Finished: Yes
Enclosed: Yes
Contiguous: Yes
Permitted: Yes
Wet space: No
Addition: No
Conversion: No

2138 Derby Court, Wheaton, DuPage County, Illinois, United States, 60189

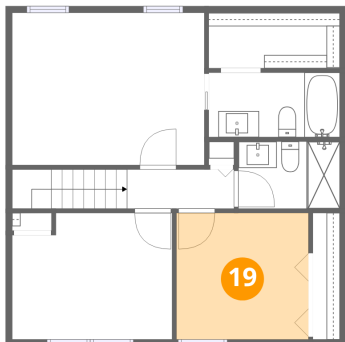
18 Floor 2 - Hall



Dimensions: 8'2" x 3'0"
Area: 24 sq. ft
Counted as living area: Yes

Heated: Yes
Finished: Yes
Enclosed: Yes
Contiguous: Yes
Permitted: Yes
Wet space: No
Addition: No
Conversion: No

19 Floor 2 - Bedroom



Dimensions: 10'1" x 9'7"
Area: 97 sq. ft
Counted as living area: Yes

Heated: Yes
Finished: Yes
Enclosed: Yes
Contiguous: Yes
Permitted: Yes
Wet space: No
Addition: No
Conversion: No