

## Home data report

95 Lord Seaton Road, St. Andrew's, North York, Ontario, Canada,  
M2P 1K7



**Total Area: 6290 sq. ft**

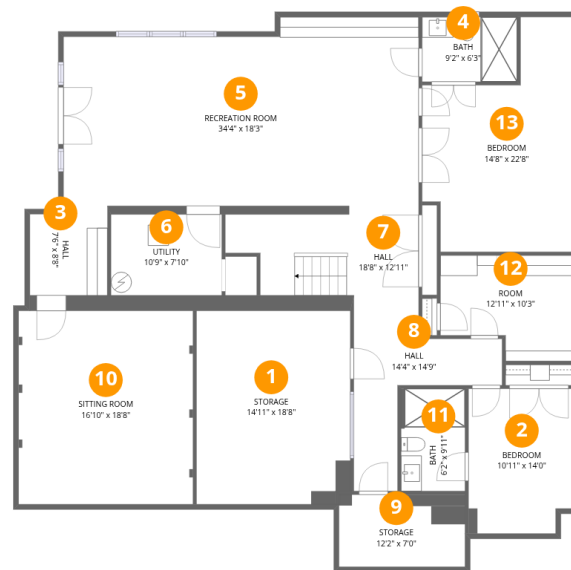
1st Floor: 2048 sq. ft, 2nd Floor: 1883 sq. ft, 3rd Floor: 227 sq. ft, 4th Floor: 2132 sq. ft  
Excluded: Storage 366 sq. ft, Utility 84 sq. ft, Fireplace 7 sq. ft, Open to below 162 sq. ft,  
Walls: 353 sq. ft

## Property summary



## Home data report

95 Lord Seaton Road, St. Andrew's, North York, Ontario, Canada, M2P 1K7



## Room dimensions

Floor 1

Total:2048sqft

Excluded: 450sqft

#		Dimensions	sqft	Counted as living area
1	Storage	14'11" x 18'8"	278 sq. ft	No
2	Bedroom	10'11" x 14'0"	153 sq. ft	Yes
3	Hall	7'6" x 8'8"	65 sq. ft	Yes
4	Bath	9'2" x 6'3"	57 sq. ft	Yes
5	Recreation Room	34'4" x 18'3"	627 sq. ft	Yes
6	Utility	10'9" x 7'10"	84 sq. ft	No
7	Hall	18'8" x 12'11"	242 sq. ft	Yes
8	Hall	14'4" x 14'9"	211 sq. ft	Yes
9	Storage	12'2" x 7'0"	85 sq. ft	No
10	Sitting Room	16'10" x 18'8"	315 sq. ft	Yes
11	Bath	6'2" x 9'11"	61 sq. ft	Yes

Home data report

**95 Lord Seaton Road, St. Andrew's, North York, Ontario, Canada,  
M2P 1K7**

#		Dimensions	sqft	Counted as living area
12	Room	12'11" x 10'3"	132 sq. ft	Yes
13	Bedroom	14'8" x 22'8"	333 sq. ft	Yes

Home data report

95 Lord Seaton Road, St. Andrew's, North York, Ontario, Canada, M2P 1K7



## Room dimensions

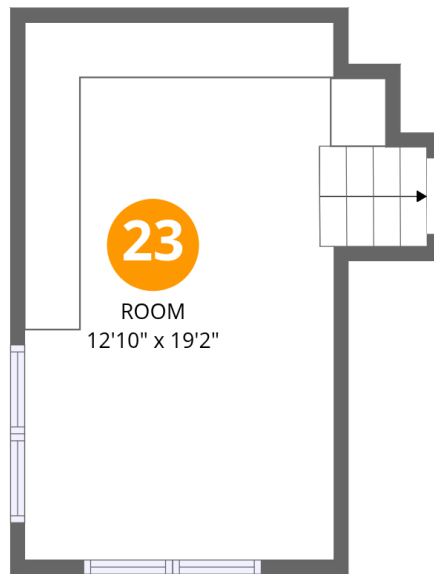
Floor 2

Total:1883sqft Excluded: 7sqft

#		Dimensions	sqft	Counted as living area
14	Dining Area	15'2" x 19'1"	290 sq. ft	Yes
15	Bath	5'4" x 8'4"	44 sq. ft	Yes
16	Hall	5'11" x 6'5"	38 sq. ft	Yes
17	Family Room	22'9" x 16'10"	383 sq. ft	Yes
18	Foyer	8'9" x 27'7"	241 sq. ft	Yes
19	Kitchen	13'11" x 18'2"	253 sq. ft	Yes
20	Pantry	7'4" x 6'5"	47 sq. ft	Yes
21	Living Room	13'7" x 25'4"	343 sq. ft	Yes
22	Entry	13'6" x 8'4"	113 sq. ft	Yes

Home data report

95 Lord Seaton Road, St. Andrew's, North York, Ontario, Canada,  
M2P 1K7



## Room dimensions

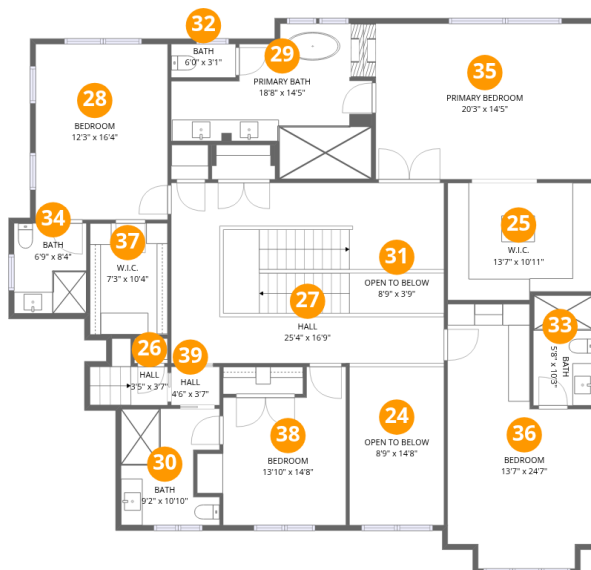
Floor 3

Total:227sqft Excluded: 0sqft

#		Dimensions	sqft	Counted as living area
23	Room	12'10" x 19'2"	246 sq. ft	Yes

# Home data report

95 Lord Seaton Road, St. Andrew's, North York, Ontario, Canada, M2P 1K7



## Room dimensions

Floor 4

Total:2132sqft Excluded: 162sqft

#		Dimensions	sqft	Counted as living area
24	Open To Below	8'9" x 14'8"	129 sq. ft	No
25	W.I.C.	13'7" x 10'11"	148 sq. ft	Yes
26	Hall	3'5" x 3'7"	12 sq. ft	Yes
27	Hall	25'4" x 16'9"	424 sq. ft	Yes
28	Bedroom	12'3" x 16'4"	200 sq. ft	Yes
29	Primary Bath	18'8" x 14'5"	269 sq. ft	Yes
30	Bath	9'2" x 10'10"	99 sq. ft	Yes
31	Open To Below	8'9" x 3'9"	33 sq. ft	No
32	Bath	6'0" x 3'1"	19 sq. ft	Yes
33	Bath	5'8" x 10'3"	58 sq. ft	Yes
34	Bath	6'9" x 8'4"	56 sq. ft	Yes

Home data report

**95 Lord Seaton Road, St. Andrew's, North York, Ontario, Canada,  
M2P 1K7**

#		Dimensions	sqft	Counted as living area
35	Primary Bedroom	20'3" x 14'5"	293 sq. ft	Yes
36	Bedroom	13'7" x 24'7"	334 sq. ft	Yes
37	W.I.C.	7'3" x 10'4"	75 sq. ft	Yes
38	Bedroom	13'10" x 14'8"	203 sq. ft	Yes
39	Hall	4'6" x 3'7"	16 sq. ft	Yes

## 1 Floor 1 - Storage



Dimensions: 14'11" x 18'8"  
Area: 278 sq. ft  
Counted as living area: No

Heated: No  
Finished: No  
Enclosed: No  
Contiguous: Yes  
Permitted: Yes  
Wet space: No  
Addition: No  
Conversion: No

## 2 Floor 1 - Bedroom



Dimensions: 10'11" x 14'0"  
Area: 153 sq. ft  
Counted as living area: Yes

Heated: Yes  
Finished: Yes  
Enclosed: Yes  
Contiguous: Yes  
Permitted: Yes  
Wet space: No  
Addition: No  
Conversion: No

### 3 Floor 1 - Hall



Dimensions: 7'6" x 8'8"  
Area: 65 sq. ft  
Counted as living area: Yes

Heated: Yes  
Finished: Yes  
Enclosed: Yes  
Contiguous: Yes  
Permitted: Yes  
Wet space: No  
Addition: No  
Conversion: No

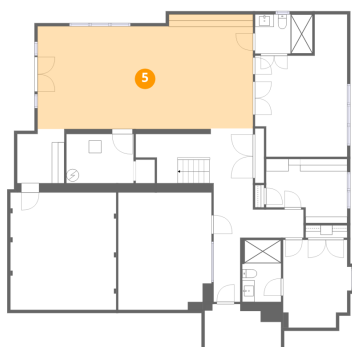
### 4 Floor 1 - Bath



Dimensions: 9'2" x 6'3"  
Area: 57 sq. ft  
Counted as living area: Yes

Heated: Yes  
Finished: Yes  
Enclosed: Yes  
Contiguous: Yes  
Permitted: Yes  
Wet space: Yes  
Addition: No  
Conversion: No

### 5 Floor 1 - Recreation Room



Dimensions: 34'4" x 18'3"  
Area: 627 sq. ft  
Counted as living area: Yes

Heated: Yes  
Finished: Yes  
Enclosed: Yes  
Contiguous: Yes  
Permitted: Yes  
Wet space: No  
Addition: No  
Conversion: No

## 6 Floor 1 - Utility



Dimensions: 10'9" x 7'10"  
Area: 84 sq. ft  
Counted as living area: No

Heated: Yes  
Finished: No  
Enclosed: Yes  
Contiguous: Yes  
Permitted: Yes  
Wet space: No  
Addition: No  
Conversion: No

## 7 Floor 1 - Hall



Dimensions: 18'8" x 12'11"  
Area: 242 sq. ft  
Counted as living area: Yes

Heated: Yes  
Finished: Yes  
Enclosed: Yes  
Contiguous: Yes  
Permitted: Yes  
Wet space: No  
Addition: No  
Conversion: No

## 8 Floor 1 - Hall



Dimensions: 14'4" x 14'9"  
Area: 211 sq. ft  
Counted as living area: Yes

Heated: Yes  
Finished: Yes  
Enclosed: Yes  
Contiguous: Yes  
Permitted: Yes  
Wet space: No  
Addition: No  
Conversion: No

### 9 Floor 1 - Storage



Dimensions: 12'2" x 7'0"  
Area: 85 sq. ft  
Counted as living area: No

Heated: No  
Finished: No  
Enclosed: No  
Contiguous: Yes  
Permitted: Yes  
Wet space: No  
Addition: No  
Conversion: No

### 10 Floor 1 - Sitting Room



Dimensions: 16'10" x 18'8"  
Area: 315 sq. ft  
Counted as living area: Yes

Heated: Yes  
Finished: Yes  
Enclosed: Yes  
Contiguous: Yes  
Permitted: Yes  
Wet space: No  
Addition: No  
Conversion: No

### 11 Floor 1 - Bath



Dimensions: 6'2" x 9'11"  
Area: 61 sq. ft  
Counted as living area: Yes

Heated: Yes  
Finished: Yes  
Enclosed: Yes  
Contiguous: Yes  
Permitted: Yes  
Wet space: Yes  
Addition: No  
Conversion: No

**12** Floor 1 - Room

---



Dimensions: 12'11" x 10'3"  
Area: 132 sq. ft  
Counted as living area: Yes

Heated: Yes  
Finished: Yes  
Enclosed: Yes  
Contiguous: Yes  
Permitted: Yes  
Wet space: No  
Addition: No  
Conversion: No

**13** Floor 1 - Bedroom

---



Dimensions: 14'8" x 22'8"  
Area: 333 sq. ft  
Counted as living area: Yes

Heated: Yes  
Finished: Yes  
Enclosed: Yes  
Contiguous: Yes  
Permitted: Yes  
Wet space: No  
Addition: No  
Conversion: No

**14** Floor 2 - Dining Area

---



Dimensions: 15'2" x 19'1"  
Area: 290 sq. ft  
Counted as living area: Yes

Heated: Yes  
Finished: Yes  
Enclosed: Yes  
Contiguous: Yes  
Permitted: Yes  
Wet space: No  
Addition: No  
Conversion: No

**15** Floor 2 - Bath

---



Dimensions: 5'4" x 8'4"  
Area: 44 sq. ft  
Counted as living area: Yes

Heated: Yes  
Finished: Yes  
Enclosed: Yes  
Contiguous: Yes  
Permitted: Yes  
Wet space: Yes  
Addition: No  
Conversion: No

**16** Floor 2 - Hall

---



Dimensions: 5'11" x 6'5"  
Area: 38 sq. ft  
Counted as living area: Yes

Heated: Yes  
Finished: Yes  
Enclosed: Yes  
Contiguous: Yes  
Permitted: Yes  
Wet space: No  
Addition: No  
Conversion: No

**17** Floor 2 - Family Room

---



Dimensions: 22'9" x 16'10"  
Area: 383 sq. ft  
Counted as living area: Yes

Heated: Yes  
Finished: Yes  
Enclosed: Yes  
Contiguous: Yes  
Permitted: Yes  
Wet space: No  
Addition: No  
Conversion: No

**18** Floor 2 - Foyer



Dimensions: 8'9" x 27'7"  
Area: 241 sq. ft  
Counted as living area: Yes

Heated: Yes  
Finished: Yes  
Enclosed: Yes  
Contiguous: Yes  
Permitted: Yes  
Wet space: No  
Addition: No  
Conversion: No

**19** Floor 2 - Kitchen



Dimensions: 13'11" x 18'2"  
Area: 253 sq. ft  
Counted as living area: Yes

Heated: Yes  
Finished: Yes  
Enclosed: Yes  
Contiguous: Yes  
Permitted: Yes  
Wet space: No  
Addition: No  
Conversion: No

**20** Floor 2 - Pantry



Dimensions: 7'4" x 6'5"  
Area: 47 sq. ft  
Counted as living area: Yes

Heated: Yes  
Finished: Yes  
Enclosed: Yes  
Contiguous: Yes  
Permitted: Yes  
Wet space: No  
Addition: No  
Conversion: No

### 21 Floor 2 - Living Room



Dimensions: 13'7" x 25'4"  
Area: 343 sq. ft  
Counted as living area: Yes

Heated: Yes  
Finished: Yes  
Enclosed: Yes  
Contiguous: Yes  
Permitted: Yes  
Wet space: No  
Addition: No  
Conversion: No

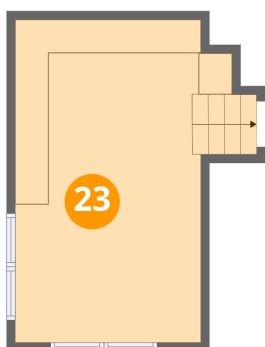
### 22 Floor 2 - Entry



Dimensions: 13'6" x 8'4"  
Area: 113 sq. ft  
Counted as living area: Yes

Heated: Yes  
Finished: Yes  
Enclosed: Yes  
Contiguous: Yes  
Permitted: Yes  
Wet space: No  
Addition: No  
Conversion: No

### 23 Floor 3 - Room



Dimensions: 12'10" x 19'2"  
Area: 246 sq. ft  
Counted as living area: Yes

Heated: Yes  
Finished: Yes  
Enclosed: Yes  
Contiguous: Yes  
Permitted: Yes  
Wet space: No  
Addition: No  
Conversion: No

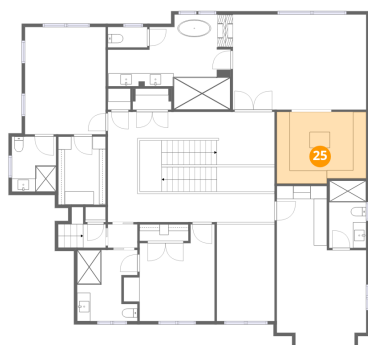
**24** Floor 4 - Open To Below



Dimensions: 8'9" x 14'8"  
Area: 129 sq. ft  
Counted as living area: No

Heated: No  
Finished: No  
Enclosed: No  
Contiguous: Yes  
Permitted: No  
Wet space: No  
Addition: No  
Conversion: No

**25** Floor 4 - W.I.C.



Dimensions: 13'7" x 10'11"  
Area: 148 sq. ft  
Counted as living area: Yes

Heated: Yes  
Finished: Yes  
Enclosed: Yes  
Contiguous: Yes  
Permitted: Yes  
Wet space: No  
Addition: No  
Conversion: No

**26** Floor 4 - Hall



Dimensions: 3'5" x 3'7"  
Area: 12 sq. ft  
Counted as living area: Yes

Heated: Yes  
Finished: Yes  
Enclosed: Yes  
Contiguous: Yes  
Permitted: Yes  
Wet space: No  
Addition: No  
Conversion: No

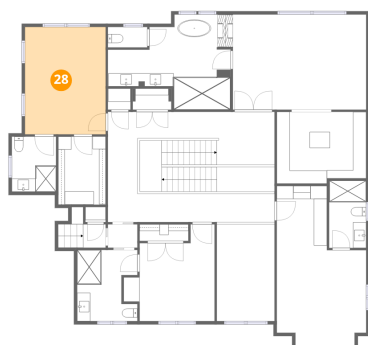
### 27 Floor 4 - Hall



Dimensions: 25'4" x 16'9"  
Area: 424 sq. ft  
Counted as living area: Yes

Heated: Yes  
Finished: Yes  
Enclosed: Yes  
Contiguous: Yes  
Permitted: Yes  
Wet space: No  
Addition: No  
Conversion: No

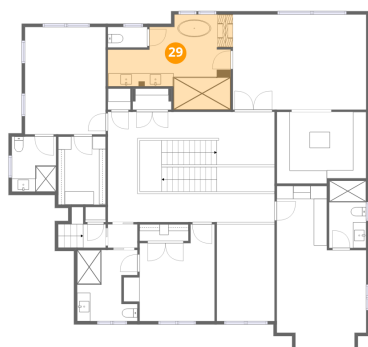
### 28 Floor 4 - Bedroom



Dimensions: 12'3" x 16'4"  
Area: 200 sq. ft  
Counted as living area: Yes

Heated: Yes  
Finished: Yes  
Enclosed: Yes  
Contiguous: Yes  
Permitted: Yes  
Wet space: No  
Addition: No  
Conversion: No

### 29 Floor 4 - Primary Bath



Dimensions: 18'8" x 14'5"  
Area: 269 sq. ft  
Counted as living area: Yes

Heated: Yes  
Finished: Yes  
Enclosed: Yes  
Contiguous: Yes  
Permitted: Yes  
Wet space: Yes  
Addition: No  
Conversion: No

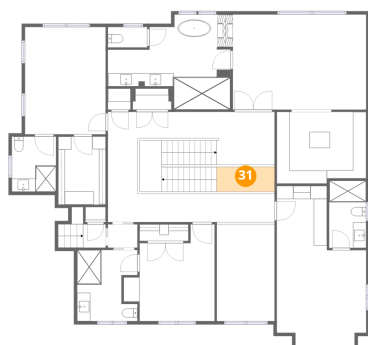
**30** Floor 4 - Bath



Dimensions: 9'2" x 10'10"  
Area: 99 sq. ft  
Counted as living area: Yes

Heated: Yes  
Finished: Yes  
Enclosed: Yes  
Contiguous: Yes  
Permitted: Yes  
Wet space: Yes  
Addition: No  
Conversion: No

**31** Floor 4 - Open To Below



Dimensions: 8'9" x 3'9"  
Area: 33 sq. ft  
Counted as living area: No

Heated: No  
Finished: No  
Enclosed: No  
Contiguous: Yes  
Permitted: No  
Wet space: No  
Addition: No  
Conversion: No

**32** Floor 4 - Bath



Dimensions: 6'0" x 3'1"  
Area: 19 sq. ft  
Counted as living area: Yes

Heated: Yes  
Finished: Yes  
Enclosed: Yes  
Contiguous: Yes  
Permitted: Yes  
Wet space: Yes  
Addition: No  
Conversion: No

**33** Floor 4 - Bath



Dimensions: 5'8" x 10'3"  
Area: 58 sq. ft  
Counted as living area: Yes

Heated: Yes  
Finished: Yes  
Enclosed: Yes  
Contiguous: Yes  
Permitted: Yes  
Wet space: Yes  
Addition: No  
Conversion: No

**34** Floor 4 - Bath



Dimensions: 6'9" x 8'4"  
Area: 56 sq. ft  
Counted as living area: Yes

Heated: Yes  
Finished: Yes  
Enclosed: Yes  
Contiguous: Yes  
Permitted: Yes  
Wet space: Yes  
Addition: No  
Conversion: No

**35** Floor 4 - Primary Bedroom



Dimensions: 20'3" x 14'5"  
Area: 293 sq. ft  
Counted as living area: Yes

Heated: Yes  
Finished: Yes  
Enclosed: Yes  
Contiguous: Yes  
Permitted: Yes  
Wet space: No  
Addition: No  
Conversion: No

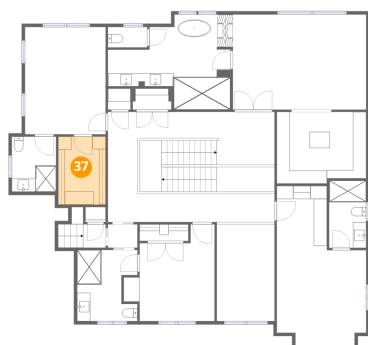
**36** Floor 4 - Bedroom



Dimensions: 13'7" x 24'7"  
Area: 334 sq. ft  
Counted as living area: Yes

Heated: Yes  
Finished: Yes  
Enclosed: Yes  
Contiguous: Yes  
Permitted: Yes  
Wet space: No  
Addition: No  
Conversion: No

**37** Floor 4 - W.I.C.



Dimensions: 7'3" x 10'4"  
Area: 75 sq. ft  
Counted as living area: Yes

Heated: Yes  
Finished: Yes  
Enclosed: Yes  
Contiguous: Yes  
Permitted: Yes  
Wet space: No  
Addition: No  
Conversion: No

**38** Floor 4 - Bedroom



Dimensions: 13'10" x 14'8"  
Area: 203 sq. ft  
Counted as living area: Yes

Heated: Yes  
Finished: Yes  
Enclosed: Yes  
Contiguous: Yes  
Permitted: Yes  
Wet space: No  
Addition: No  
Conversion: No

**39** Floor 4 - Hall

---



**Dimensions:** 4'6" x 3'7"  
**Area:** 16 sq. ft  
**Counted as living area:** Yes

**Heated:** Yes  
**Finished:** Yes  
**Enclosed:** Yes  
**Contiguous:** Yes  
**Permitted:** Yes  
**Wet space:** No  
**Addition:** No  
**Conversion:** No