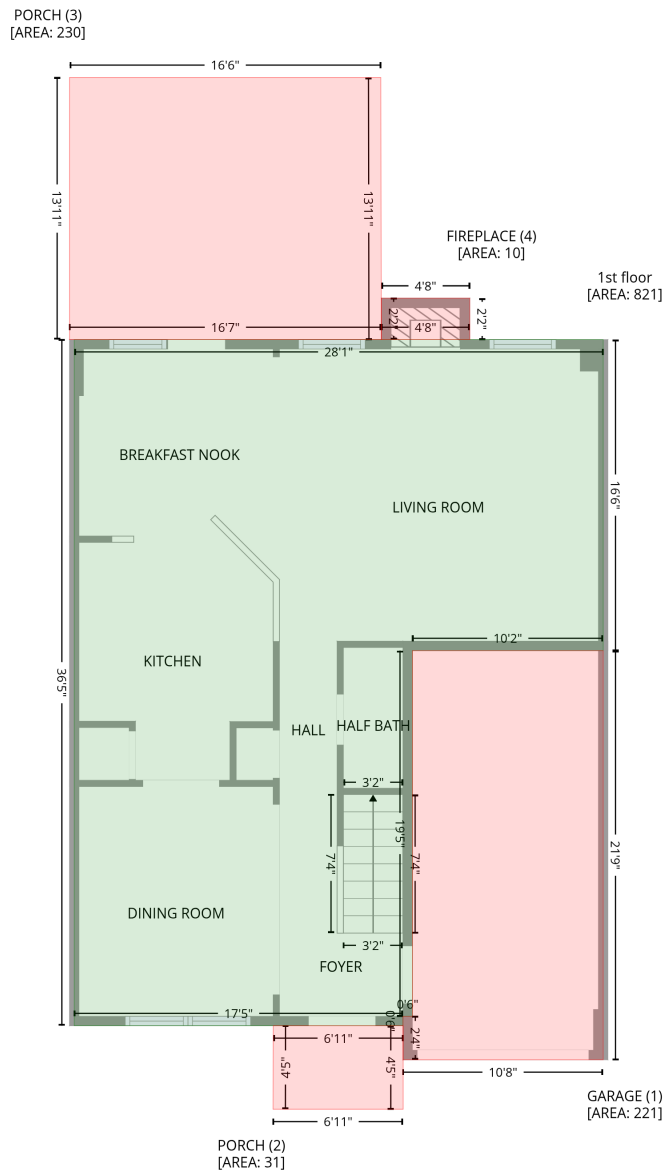


2327 Whitford Lane, Starmount, Charlotte, Mecklenburg County, North Carolina, United States, 28210

Gross Living Area: 1844 sq. ft

Level 1



| Space | Area (sq. ft) | Calculation |
|-----------------------------|---------------|--|
| 1st floor (Living area) | 821 | Coordinate Polygon Area Algorithm using inches $-((368.4 + 368.4) * (57.4 - 255.5) + (368.4 + 246.8) * (255.5 - 255.5) + (246.8 + 246.8) * (255.5 - 488.5) + (246.8 + 240.8) * (488.5 - 488.5) + (240.8 + 240.8) * (488.5 - 494.5) + (240.8 + 31.3) * (494.5 - 494.5) + (31.3 + 31.3) * (494.5 - 57.4) + (31.3 + 368.4) * (57.4 - 57.4)) * 0.5 * 0.00694$ |
| GARAGE (Non-living area) | 221 | $-((368.4 + 368.4) * (255.5 - 516.1) + (368.4 + 240.8) * (516.1 - 516.1) + (240.8 + 240.8) * (516.1 - 488.5) + (240.8 + 246.8) * (488.5 - 488.5) + (246.8 + 246.8) * (488.5 - 255.5) + (246.8 + 368.4) * (255.5 - 255.5)) * 0.5 * 0.00694$ |

2327 Whitford Lane, Starmount, Charlotte, Mecklenburg County, North Carolina, United States, 28210

Gross Living Area: 1844 sq. ft

Level 1

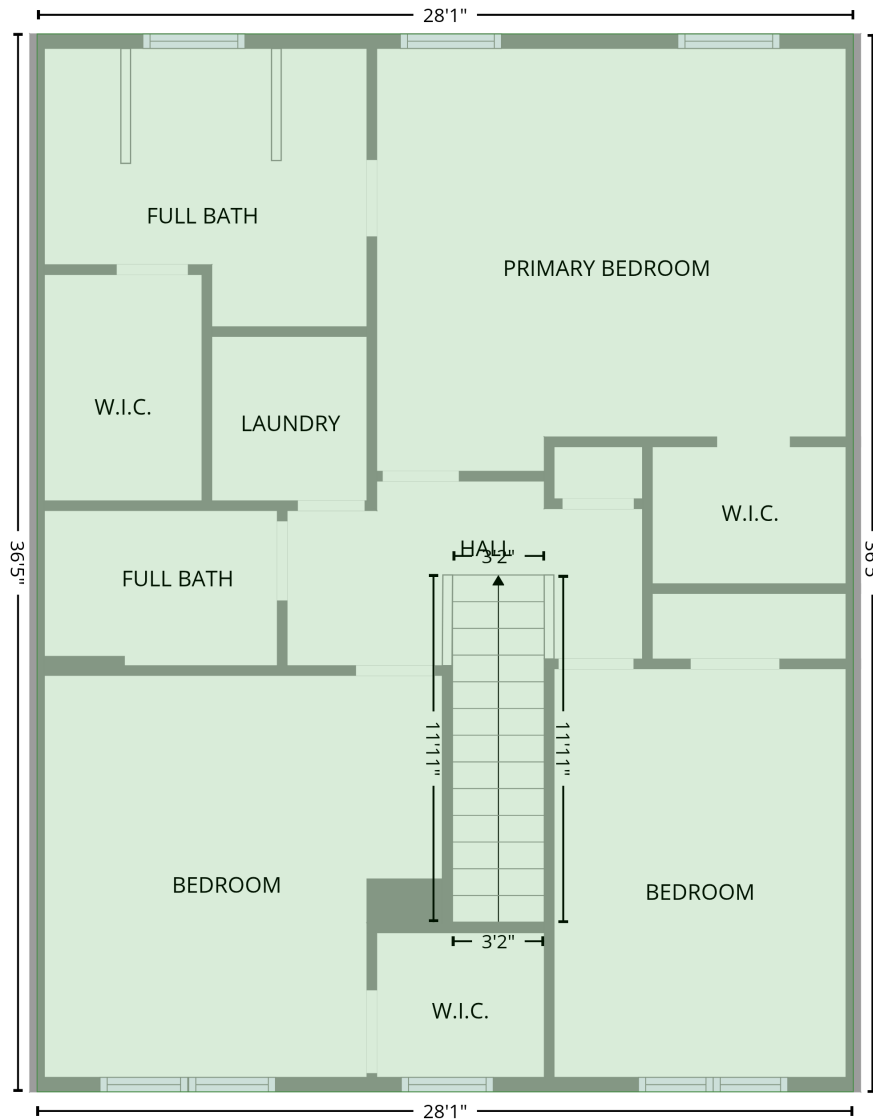
| Space | Area (sq. ft) | Calculation <small>Coordinate Polygon Area Algorithm using inches</small> |
|--------------------------------|---------------|--|
| PORCH (Non-living area) | 31 | $-((240.9 + 240.9) * (494.5 - 547.7) + (240.9 + 158) * (547.7 - 547.7) + (158 + 158.1) * (547.7 - 494.5) + (158.1 + 240.9) * (494.5 - 494.5)) * 0.5 * 0.00694$ |
| PORCH (Non-living area) | 230 | $-((226.7 + 227) * (-109.6 - 57.4) + (227 + 28.3) * (57.4 - 57.4) + (28.3 + 28.3) * (57.4 - -109.6) + (28.3 + 226.7) * (-109.6 - -109.6)) * 0.5 * 0.00694$ |
| FIREPLACE (Non-living area) | 10 | $-((283.4 + 283.4) * (31 - 57.4) + (283.4 + 227) * (57.4 - 57.4) + (227 + 227) * (57.4 - 31) + (227 + 283.4) * (31 - 31)) * 0.5 * 0.00694$ |

2327 Whitford Lane, Starmount, Charlotte, Mecklenburg County, North Carolina, United States, 28210

Gross Living Area: 1844 sq. ft

Level 2

2nd floor
[AREA: 1023]



| Space | Area (sq. ft) | Calculation <small>Coordinate Polygon Area Algorithm using inches</small> |
|----------------------------|---------------|--|
| 2nd floor (Living area) | 1023 | $-((368.4 + 368.4) * (57.4 - 494.5) + (368.4 + 31.3) * (494.5 - 494.5) + (31.3 + 31.3) * (494.5 - 57.4) + (31.3 + 368.4) * (57.4 - 57.4)) * 0.5 * 0.00694$ |