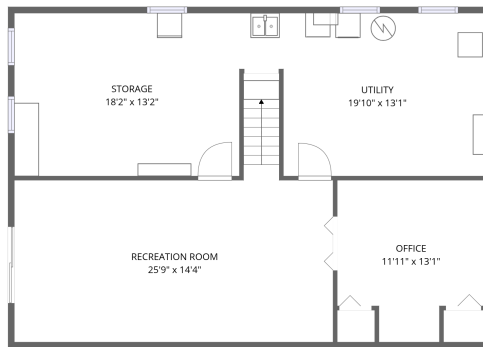


## Home data report

# 1359 W Glenlord Rd, St Joseph, MI, US



1st floor



Basement

**Total Area: 1618 sq. ft**

Basement: 540 sq. ft, 1st Floor: 1078 sq. ft

Excluded: Storage 239 sq. ft, Utility 230 sq. ft, Garage 520 sq. ft, Walls: 166 sq. ft

## Property summary

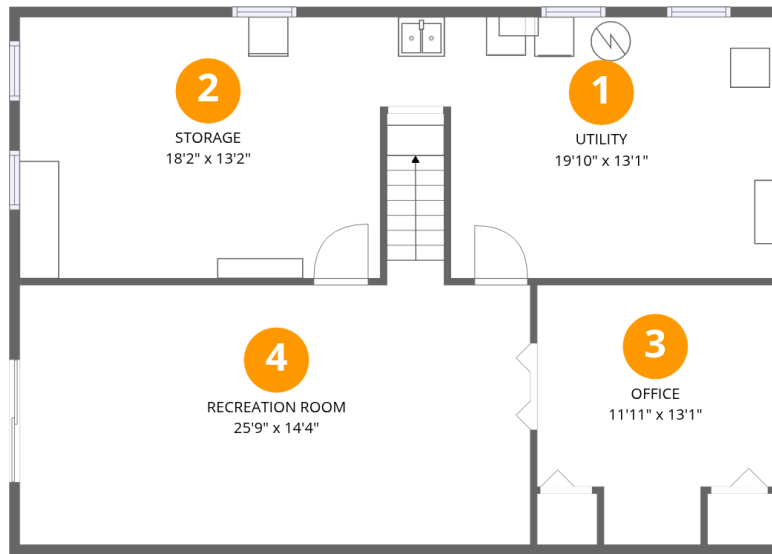


Home data report

**1359 W Glenlord Rd, St Joseph, MI, US**

 **1**  
Half baths

 **1**  
Garages



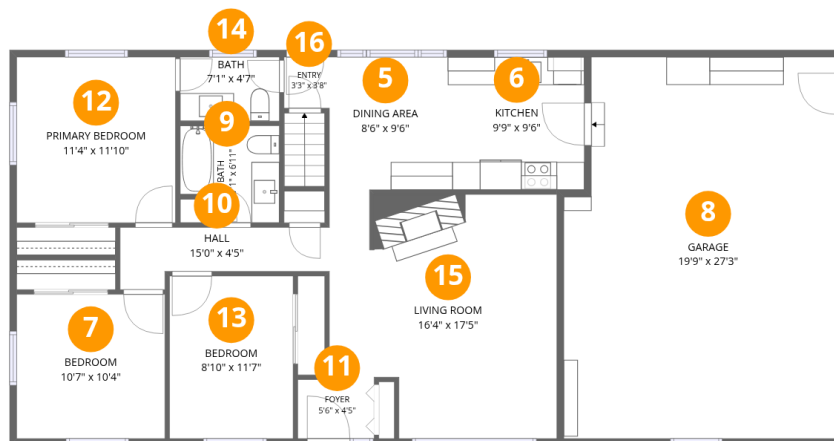
## Room dimensions

Floor 1 Below grade

Total: 540 sqft

Excluded: 469 sqft

| # |                 | Dimensions     | sqft       | Counted as living area |
|---|-----------------|----------------|------------|------------------------|
| 1 | Utility         | 19'10" x 13'1" | 230 sq. ft | No                     |
| 2 | Storage         | 18'2" x 13'2"  | 239 sq. ft | No                     |
| 3 | Office          | 11'11" x 13'1" | 136 sq. ft | Yes                    |
| 4 | Recreation Room | 25'9" x 14'4"  | 361 sq. ft | Yes                    |



## Room dimensions

Floor 2

Total: 1078 sqft Excluded: 520 sqft

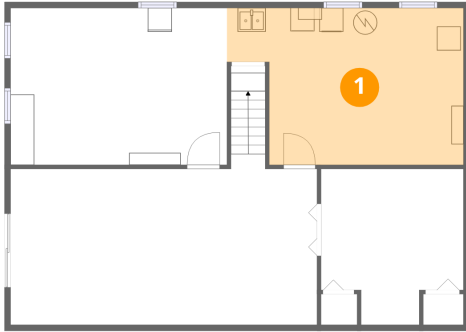
| #  |                 | Dimensions     | sqft       | Counted as living area |
|----|-----------------|----------------|------------|------------------------|
| 5  | Dining Area     | 8'6" x 9'6"    | 81 sq. ft  | Yes                    |
| 6  | Kitchen         | 9'9" x 9'6"    | 93 sq. ft  | Yes                    |
| 7  | Bedroom         | 10'7" x 10'4"  | 110 sq. ft | Yes                    |
| 8  | Garage          | 19'9" x 27'3"  | 520 sq. ft | No                     |
| 9  | Bath            | 7'1" x 6'11"   | 44 sq. ft  | Yes                    |
| 10 | Hall            | 15'0" x 4'5"   | 51 sq. ft  | Yes                    |
| 11 | Foyer           | 5'6" x 4'5"    | 25 sq. ft  | Yes                    |
| 12 | Primary Bedroom | 11'4" x 11'10" | 135 sq. ft | Yes                    |
| 13 | Bedroom         | 8'10" x 11'7"  | 103 sq. ft | Yes                    |
| 14 | Bath            | 7'1" x 4'7"    | 33 sq. ft  | Yes                    |
| 15 | Living Room     | 16'4" x 17'5"  | 263 sq. ft | Yes                    |

Home data report

**1359 W Glenlord Rd, St Joseph, MI, US**

| #  |       | Dimensions  | sqft      | Counted as living area |
|----|-------|-------------|-----------|------------------------|
| 16 | Entry | 3'3" x 3'8" | 12 sq. ft | Yes                    |

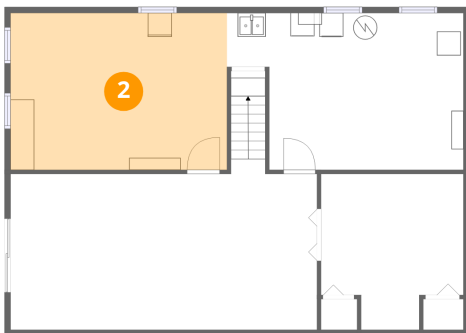
## 1 Floor 1 - Utility



Dimensions: 19'10" x 13'1"  
Area: 230 sq. ft  
Counted as living area: No

Heated: Yes  
Finished: No  
Enclosed: Yes  
Contiguous: Yes  
Permitted: Yes  
Wet space: No  
Addition: No  
Conversion: No

## 2 Floor 1 - Storage



Dimensions: 18'2" x 13'2"  
Area: 239 sq. ft  
Counted as living area: No

Heated: No  
Finished: No  
Enclosed: No  
Contiguous: Yes  
Permitted: Yes  
Wet space: No  
Addition: No  
Conversion: No

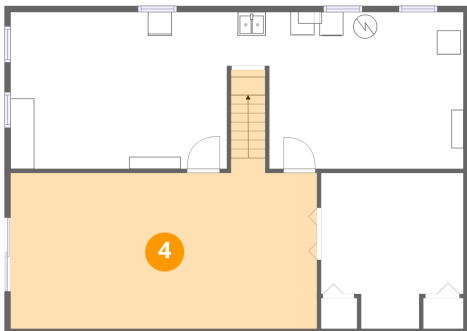
### 3 Floor 1 - Office



Dimensions: 11'11" x 13'1"  
Area: 136 sq. ft  
Counted as living area: Yes

Heated: Yes  
Finished: Yes  
Enclosed: Yes  
Contiguous: Yes  
Permitted: Yes  
Wet space: No  
Addition: No  
Conversion: No

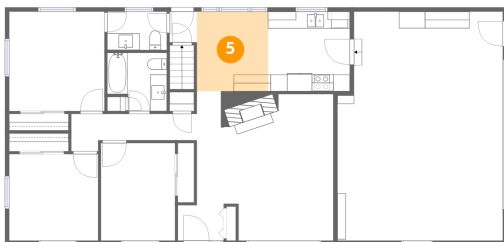
### 4 Floor 1 - Recreation Room



Dimensions: 25'9" x 14'4"  
Area: 361 sq. ft  
Counted as living area: Yes

Heated: Yes  
Finished: Yes  
Enclosed: Yes  
Contiguous: Yes  
Permitted: Yes  
Wet space: No  
Addition: No  
Conversion: No

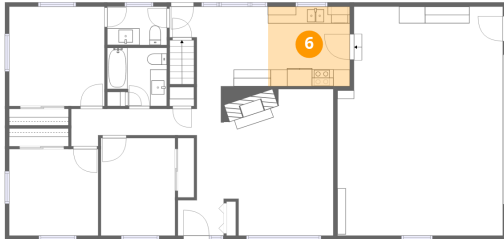
### 5 Floor 2 - Dining Area



Dimensions: 8'6" x 9'6"  
Area: 81 sq. ft  
Counted as living area: Yes

Heated: Yes  
Finished: Yes  
Enclosed: Yes  
Contiguous: Yes  
Permitted: Yes  
Wet space: No  
Addition: No  
Conversion: No

## 6 Floor 2 - Kitchen



Dimensions: 9'9" x 9'6"  
Area: 93 sq. ft  
Counted as living area: Yes

Heated: Yes  
Finished: Yes  
Enclosed: Yes  
Contiguous: Yes  
Permitted: Yes  
Wet space: No  
Addition: No  
Conversion: No

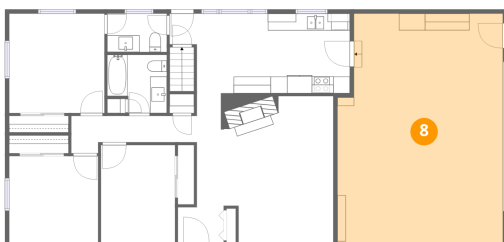
## 7 Floor 2 - Bedroom



Dimensions: 10'7" x 10'4"  
Area: 110 sq. ft  
Counted as living area: Yes

Heated: Yes  
Finished: Yes  
Enclosed: Yes  
Contiguous: Yes  
Permitted: Yes  
Wet space: No  
Addition: No  
Conversion: No

## 8 Floor 2 - Garage



Dimensions: 19'9" x 27'3"  
Area: 520 sq. ft  
Counted as living area: No

Heated: No  
Finished: No  
Enclosed: Yes  
Contiguous: Yes  
Permitted: Yes  
Wet space: No  
Addition: No  
Conversion: No

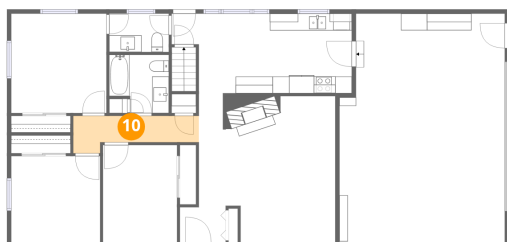
**9** Floor 2 - Bath



Dimensions: 7'1" x 6'11"  
Area: 44 sq. ft  
Counted as living area: Yes

Heated: Yes  
Finished: Yes  
Enclosed: Yes  
Contiguous: Yes  
Permitted: Yes  
Wet space: Yes  
Addition: No  
Conversion: No

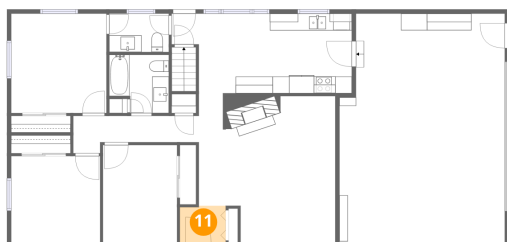
**10** Floor 2 - Hall



Dimensions: 15'0" x 4'5"  
Area: 51 sq. ft  
Counted as living area: Yes

Heated: Yes  
Finished: Yes  
Enclosed: Yes  
Contiguous: Yes  
Permitted: Yes  
Wet space: No  
Addition: No  
Conversion: No

**11** Floor 2 - Foyer



Dimensions: 5'6" x 4'5"  
Area: 25 sq. ft  
Counted as living area: Yes

Heated: Yes  
Finished: Yes  
Enclosed: Yes  
Contiguous: Yes  
Permitted: Yes  
Wet space: No  
Addition: No  
Conversion: No

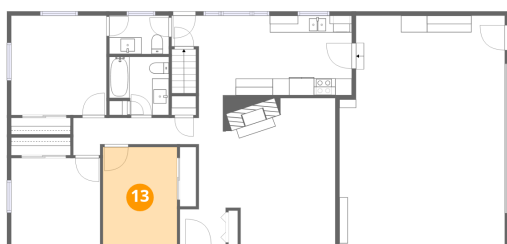
## 12 Floor 2 - Primary Bedroom



Dimensions: 11'4" x 11'10"  
Area: 135 sq. ft  
Counted as living area: Yes

Heated: Yes  
Finished: Yes  
Enclosed: Yes  
Contiguous: Yes  
Permitted: Yes  
Wet space: No  
Addition: No  
Conversion: No

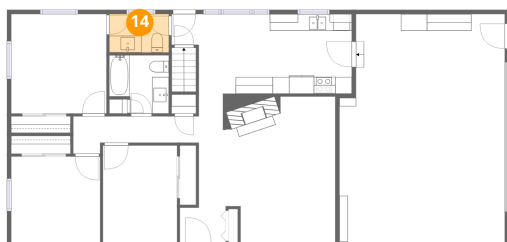
## 13 Floor 2 - Bedroom



Dimensions: 8'10" x 11'7"  
Area: 103 sq. ft  
Counted as living area: Yes

Heated: Yes  
Finished: Yes  
Enclosed: Yes  
Contiguous: Yes  
Permitted: Yes  
Wet space: No  
Addition: No  
Conversion: No

## 14 Floor 2 - Bath

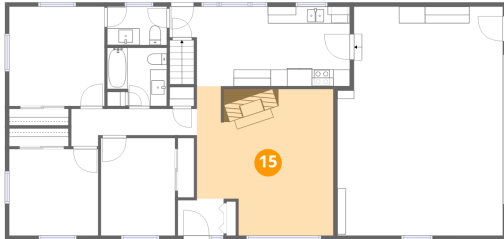


Dimensions: 7'1" x 4'7"  
Area: 33 sq. ft  
Counted as living area: Yes

Heated: Yes  
Finished: Yes  
Enclosed: Yes  
Contiguous: Yes  
Permitted: Yes  
Wet space: Yes  
Addition: No  
Conversion: No

**15** Floor 2 - Living Room

---

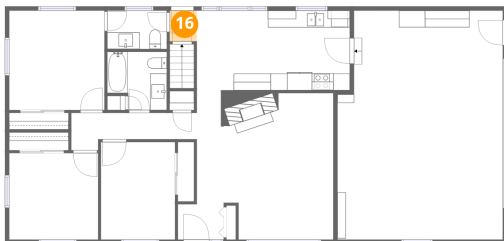


Dimensions: 16'4" x 17'5"  
Area: 263 sq. ft  
Counted as living area: Yes

Heated: Yes  
Finished: Yes  
Enclosed: Yes  
Contiguous: Yes  
Permitted: Yes  
Wet space: No  
Addition: No  
Conversion: No

**16** Floor 2 - Entry

---



Dimensions: 3'3" x 3'8"  
Area: 12 sq. ft  
Counted as living area: Yes

Heated: Yes  
Finished: Yes  
Enclosed: Yes  
Contiguous: Yes  
Permitted: Yes  
Wet space: No  
Addition: No  
Conversion: No