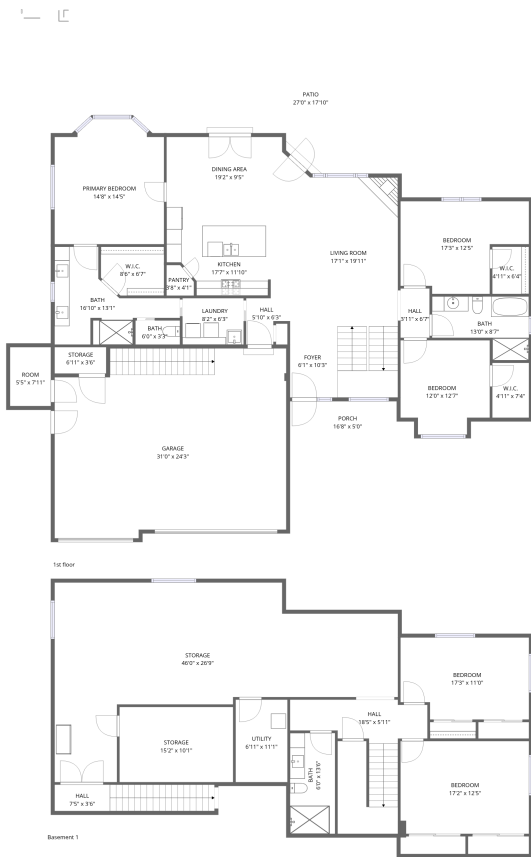


Home data report

5061 Prairie Lark Lane, Severance, Weld County, Colorado,
United States, 80615




Total Area: 2690 sq. ft

Below Ground: 860 sq. ft, 1st Floor: 1830 sq. ft

Excluded: Storage 945 sq. ft, Utility 77 sq. ft, Garage 739 sq. ft, Room 45 sq. ft, Patio 414 sq. ft, Porch 76 sq. ft, Embedded window 20 sq. ft, Walls: 253 sq. ft

Property summary

 **2** Floors

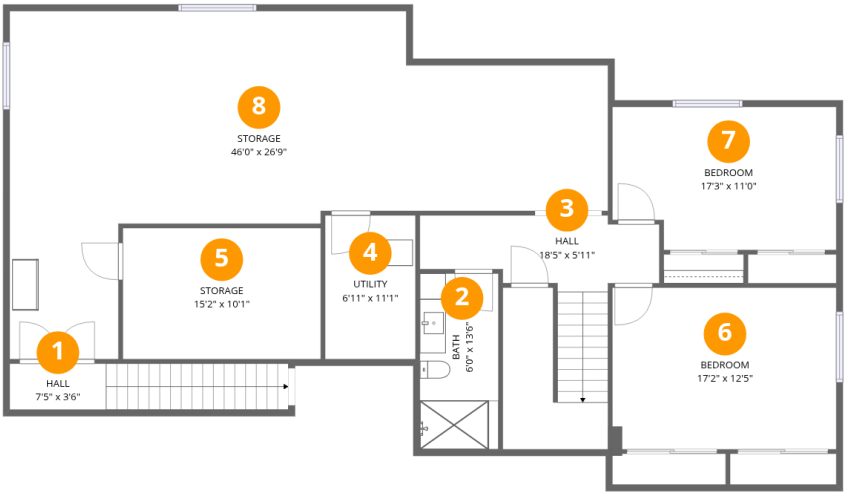
 **5** Bedrooms

 **3** Bathrooms

 **1** Garages

Home data report

5061 Prairie Lark Lane, Severance, Weld County, Colorado,
United States, 80615



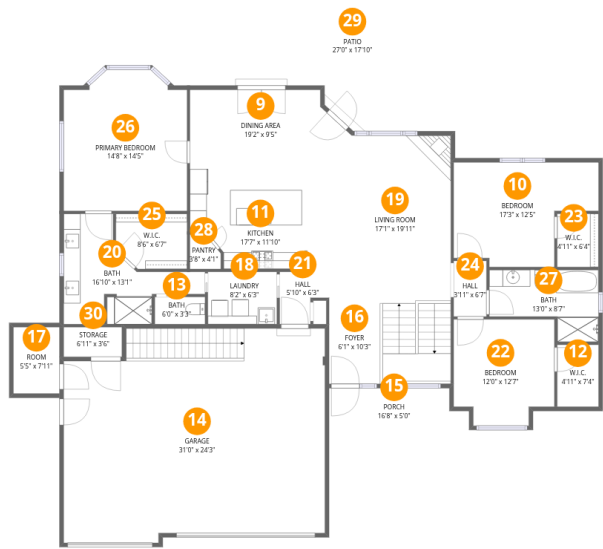
Room dimensions

Floor 1 Below grade Total:860sqft Excluded: 998sqft

#		Dimensions	sqft	Counted as living area
1	Hall	7'5" x 3'6"	76 sq. ft	Yes
2	Bath	6'0" x 13'6"	82 sq. ft	Yes
3	Hall	18'5" x 5'11"	185 sq. ft	Yes
4	Utility	6'11" x 11'1"	77 sq. ft	No
5	Storage	15'2" x 10'1"	153 sq. ft	No
6	Bedroom	17'2" x 12'5"	214 sq. ft	Yes
7	Bedroom	17'3" x 11'0"	180 sq. ft	Yes
8	Storage	46'0" x 26'9"	752 sq. ft	No

Home data report

5061 Prairie Lark Lane, Severance, Weld County, Colorado,
United States, 80615



Room dimensions

Floor 2 Total:1830sqft Excluded: 1318sqft

#		Dimensions	sqft	Counted as living area
9	Dining Area	19'2" x 9'5"	164 sq. ft	Yes
10	Bedroom	17'3" x 12'5"	174 sq. ft	Yes
11	Kitchen	17'7" x 11'10"	167 sq. ft	Yes
12	W.I.C.	4'11" x 7'4"	36 sq. ft	Yes
13	Bath	6'0" x 3'3"	19 sq. ft	Yes
14	Garage	31'0" x 24'3"	738 sq. ft	No
15	Porch	16'8" x 5'0"	76 sq. ft	No
16	Foyer	6'1" x 10'3"	62 sq. ft	Yes
17	Room	5'5" x 7'11"	43 sq. ft	No
18	Laundry	8'2" x 6'3"	51 sq. ft	Yes
19	Living Room	17'1" x 19'11"	371 sq. ft	Yes

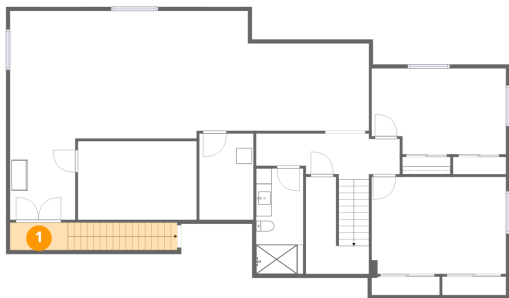
Home data report

**5061 Prairie Lark Lane, Severance, Weld County, Colorado,
United States, 80615**

#		Dimensions	sqft	Counted as living area
20	Bath	16'10" x 13'1"	125 sq. ft	Yes
21	Hall	5'10" x 6'3"	30 sq. ft	Yes
22	Bedroom	12'0" x 12'7"	139 sq. ft	Yes
23	W.I.C.	4'11" x 6'4"	31 sq. ft	Yes
24	Hall	3'11" x 6'7"	26 sq. ft	Yes
25	W.I.C.	8'6" x 6'7"	52 sq. ft	Yes
26	Primary Bedroom	14'8" x 14'5"	211 sq. ft	Yes
27	Bath	13'0" x 8'7"	87 sq. ft	Yes
28	Pantry	3'8" x 4'1"	13 sq. ft	Yes
29	Patio	27'0" x 17'10"	414 sq. ft	No
30	Storage	6'11" x 3'6"	24 sq. ft	No

5061 Prairie Lark Lane, Severance, Weld County, Colorado,
United States, 80615

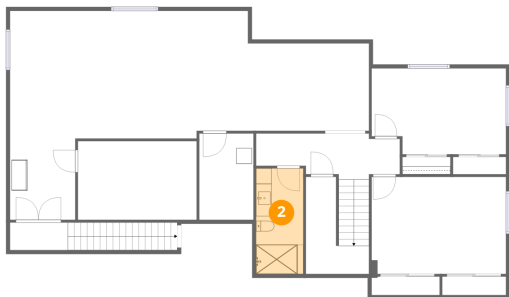
1 Floor 1 - Hall



Dimensions: 7'5" x 3'6"
Area: 76 sq. ft
Counted as living area: No

Heated: Yes
Finished: Yes
Enclosed: Yes
Contiguous: No
Permitted: Yes
Wet space: No
Addition: No
Conversion: No

2 Floor 1 - Bath



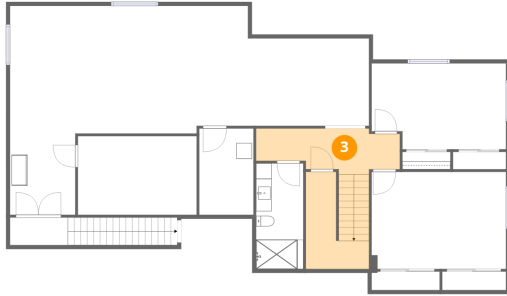
Dimensions: 6'0" x 13'6"
Area: 82 sq. ft
Counted as living area: Yes

Heated: Yes
Finished: Yes
Enclosed: Yes
Contiguous: Yes
Permitted: Yes
Wet space: Yes
Addition: No
Conversion: No

Home data report

5061 Prairie Lark Lane, Severance, Weld County, Colorado,
United States, 80615

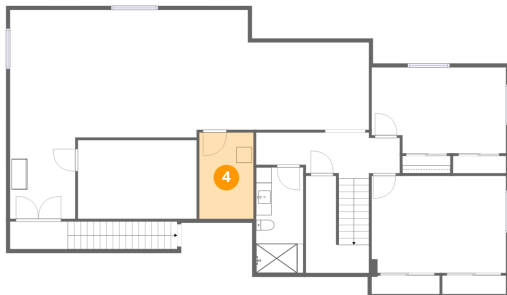
3 Floor 1 - Hall



Dimensions: 18'5" x 5'11"
Area: 185 sq. ft
Counted as living area: Yes

Heated: Yes
Finished: Yes
Enclosed: Yes
Contiguous: Yes
Permitted: Yes
Wet space: No
Addition: No
Conversion: No

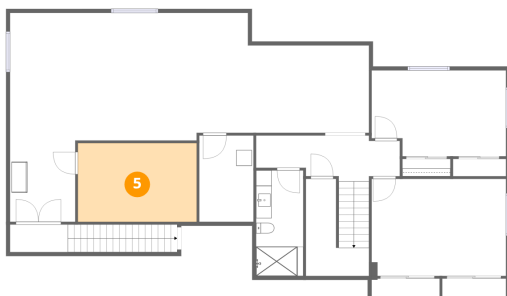
4 Floor 1 - Utility



Dimensions: 6'11" x 11'1"
Area: 77 sq. ft
Counted as living area: No

Heated: Yes
Finished: No
Enclosed: Yes
Contiguous: Yes
Permitted: Yes
Wet space: No
Addition: No
Conversion: No

5 Floor 1 - Storage



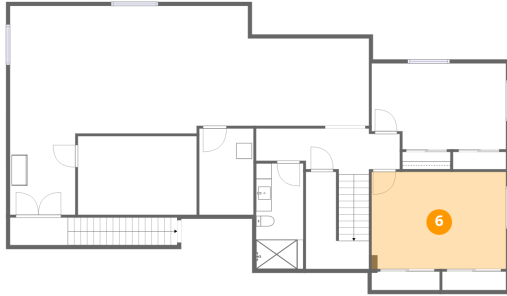
Dimensions: 15'2" x 10'1"
Area: 153 sq. ft
Counted as living area: No

Heated: No
Finished: No
Enclosed: No
Contiguous: Yes
Permitted: Yes
Wet space: No
Addition: No
Conversion: No

Home data report

5061 Prairie Lark Lane, Severance, Weld County, Colorado,
United States, 80615

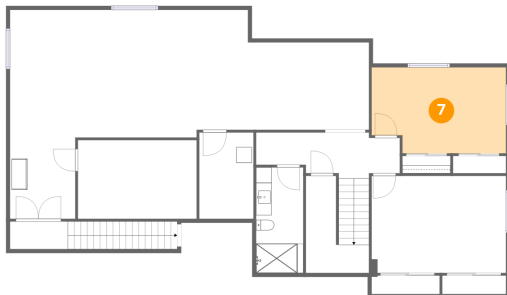
6 Floor 1 - Bedroom



Dimensions: 17'2" x 12'5"
Area: 214 sq. ft
Counted as living area: Yes

Heated: Yes
Finished: Yes
Enclosed: Yes
Contiguous: Yes
Permitted: Yes
Wet space: No
Addition: No
Conversion: No

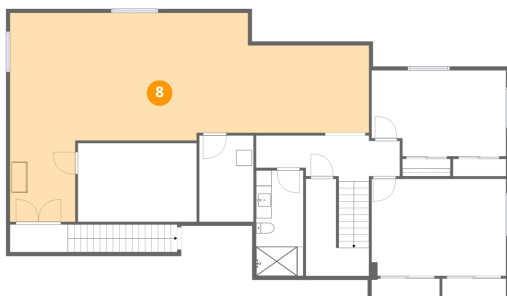
7 Floor 1 - Bedroom



Dimensions: 17'3" x 11'0"
Area: 180 sq. ft
Counted as living area: Yes

Heated: Yes
Finished: Yes
Enclosed: Yes
Contiguous: Yes
Permitted: Yes
Wet space: No
Addition: No
Conversion: No

8 Floor 1 - Storage

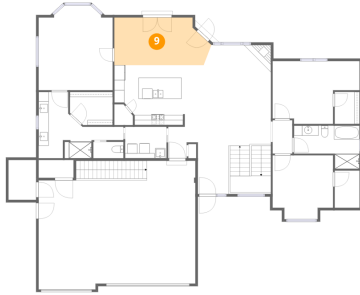


Dimensions: 46'0" x 26'9"
Area: 752 sq. ft
Counted as living area: No

Heated: No
Finished: No
Enclosed: No
Contiguous: Yes
Permitted: Yes
Wet space: No
Addition: No
Conversion: No

5061 Prairie Lark Lane, Severance, Weld County, Colorado,
United States, 80615

9 Floor 2 - Dining Area



Dimensions: 19'2" x 9'5"
Area: 164 sq. ft
Counted as living area: Yes

Heated: Yes
Finished: Yes
Enclosed: Yes
Contiguous: Yes
Permitted: Yes
Wet space: No
Addition: No
Conversion: No

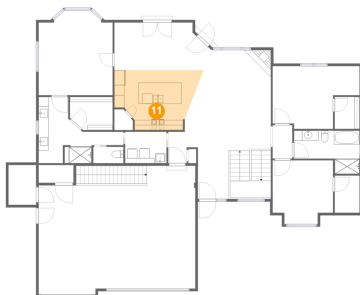
10 Floor 2 - Bedroom



Dimensions: 17'3" x 12'5"
Area: 174 sq. ft
Counted as living area: Yes

Heated: Yes
Finished: Yes
Enclosed: Yes
Contiguous: Yes
Permitted: Yes
Wet space: No
Addition: No
Conversion: No

11 Floor 2 - Kitchen



Dimensions: 17'7" x 11'10"
Area: 167 sq. ft
Counted as living area: Yes

Heated: Yes
Finished: Yes
Enclosed: Yes
Contiguous: Yes
Permitted: Yes
Wet space: No
Addition: No
Conversion: No

5061 Prairie Lark Lane, Severance, Weld County, Colorado,
United States, 80615

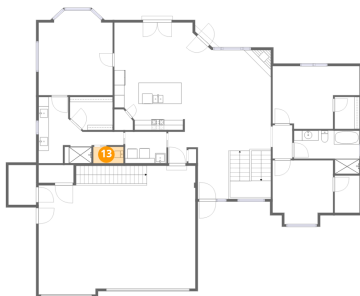
12 Floor 2 - W.I.C.



Dimensions: 4'11" x 7'4"
Area: 36 sq. ft
Counted as living area: Yes

Heated: Yes
Finished: Yes
Enclosed: Yes
Contiguous: Yes
Permitted: Yes
Wet space: No
Addition: No
Conversion: No

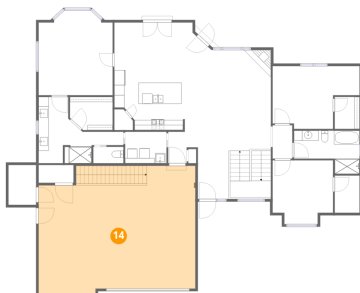
13 Floor 2 - Bath



Dimensions: 6'0" x 3'3"
Area: 19 sq. ft
Counted as living area: Yes

Heated: Yes
Finished: Yes
Enclosed: Yes
Contiguous: Yes
Permitted: Yes
Wet space: Yes
Addition: No
Conversion: No

14 Floor 2 - Garage



Dimensions: 31'0" x 24'3"
Area: 738 sq. ft
Counted as living area: No

Heated: No
Finished: No
Enclosed: Yes
Contiguous: Yes
Permitted: Yes
Wet space: No
Addition: No
Conversion: No

5061 Prairie Lark Lane, Severance, Weld County, Colorado,
United States, 80615

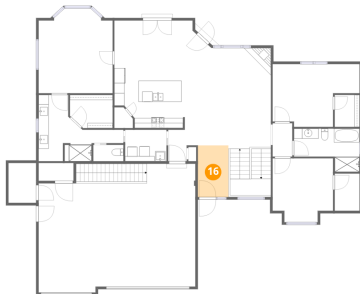
15 Floor 2 - Porch



Dimensions: 16'8" x 5'0"
Area: 76 sq. ft
Counted as living area: No

Heated: No
Finished: No
Enclosed: No
Contiguous: Yes
Permitted: Yes
Wet space: No
Addition: No
Conversion: No

16 Floor 2 - Foyer



Dimensions: 6'1" x 10'3"
Area: 62 sq. ft
Counted as living area: Yes

Heated: Yes
Finished: Yes
Enclosed: Yes
Contiguous: Yes
Permitted: Yes
Wet space: No
Addition: No
Conversion: No

17 Floor 2 - Room

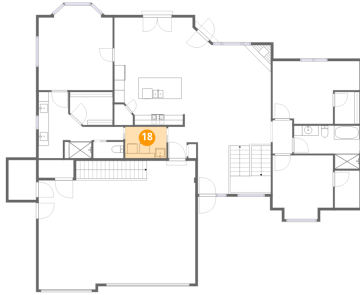


Dimensions: 5'5" x 7'11"
Area: 43 sq. ft
Counted as living area: No

Heated: Yes
Finished: No
Enclosed: Yes
Contiguous: Yes
Permitted: Yes
Wet space: No
Addition: No
Conversion: No

5061 Prairie Lark Lane, Severance, Weld County, Colorado,
United States, 80615

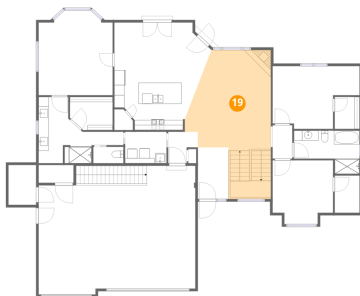
18 Floor 2 - Laundry



Dimensions: 8'2" x 6'3"
Area: 51 sq. ft
Counted as living area: Yes

Heated: Yes
Finished: Yes
Enclosed: Yes
Contiguous: Yes
Permitted: Yes
Wet space: No
Addition: No
Conversion: No

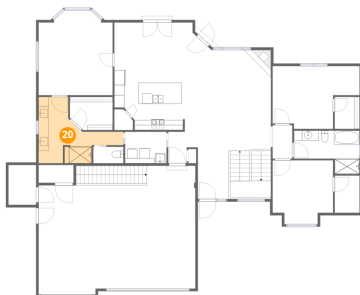
19 Floor 2 - Living Room



Dimensions: 17'1" x 19'11"
Area: 371 sq. ft
Counted as living area: Yes

Heated: Yes
Finished: Yes
Enclosed: Yes
Contiguous: Yes
Permitted: Yes
Wet space: No
Addition: No
Conversion: No

20 Floor 2 - Bath

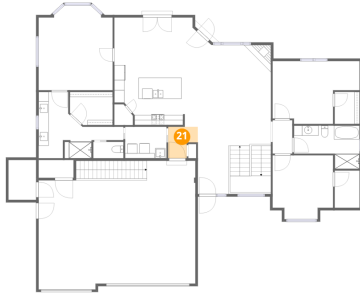


Dimensions: 16'10" x 13'1"
Area: 125 sq. ft
Counted as living area: Yes

Heated: Yes
Finished: Yes
Enclosed: Yes
Contiguous: Yes
Permitted: Yes
Wet space: Yes
Addition: No
Conversion: No

5061 Prairie Lark Lane, Severance, Weld County, Colorado,
United States, 80615

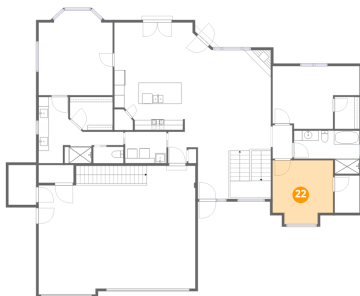
21 Floor 2 - Hall



Dimensions: 5'10" x 6'3"
Area: 30 sq. ft
Counted as living area: Yes

Heated: Yes
Finished: Yes
Enclosed: Yes
Contiguous: Yes
Permitted: Yes
Wet space: No
Addition: No
Conversion: No

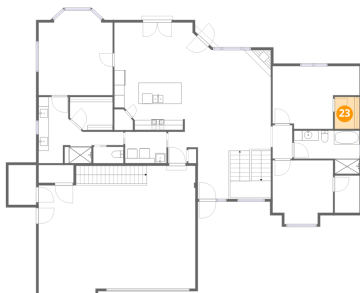
22 Floor 2 - Bedroom



Dimensions: 12'0" x 12'7"
Area: 139 sq. ft
Counted as living area: Yes

Heated: Yes
Finished: Yes
Enclosed: Yes
Contiguous: Yes
Permitted: Yes
Wet space: No
Addition: No
Conversion: No

23 Floor 2 - W.I.C.

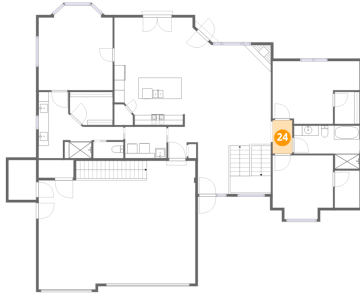


Dimensions: 4'11" x 6'4"
Area: 31 sq. ft
Counted as living area: Yes

Heated: Yes
Finished: Yes
Enclosed: Yes
Contiguous: Yes
Permitted: Yes
Wet space: No
Addition: No
Conversion: No

5061 Prairie Lark Lane, Severance, Weld County, Colorado,
United States, 80615

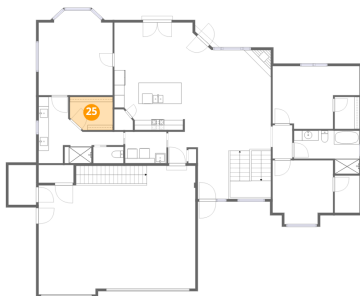
24 Floor 2 - Hall



Dimensions: 3'11" x 6'7"
Area: 26 sq. ft
Counted as living area: Yes

Heated: Yes
Finished: Yes
Enclosed: Yes
Contiguous: Yes
Permitted: Yes
Wet space: No
Addition: No
Conversion: No

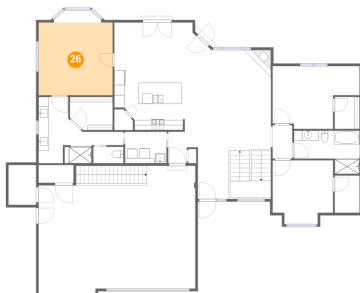
25 Floor 2 - W.I.C.



Dimensions: 8'6" x 6'7"
Area: 52 sq. ft
Counted as living area: Yes

Heated: Yes
Finished: Yes
Enclosed: Yes
Contiguous: Yes
Permitted: Yes
Wet space: No
Addition: No
Conversion: No

26 Floor 2 - Primary Bedroom

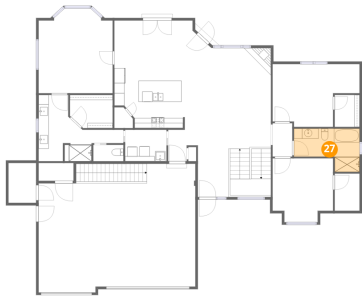


Dimensions: 14'8" x 14'5"
Area: 211 sq. ft
Counted as living area: Yes

Heated: Yes
Finished: Yes
Enclosed: Yes
Contiguous: Yes
Permitted: Yes
Wet space: No
Addition: No
Conversion: No

5061 Prairie Lark Lane, Severance, Weld County, Colorado,
United States, 80615

27 Floor 2 - Bath



Dimensions: 13'0" x 8'7"
Area: 87 sq. ft
Counted as living area: Yes

Heated: Yes
Finished: Yes
Enclosed: Yes
Contiguous: Yes
Permitted: Yes
Wet space: Yes
Addition: No
Conversion: No

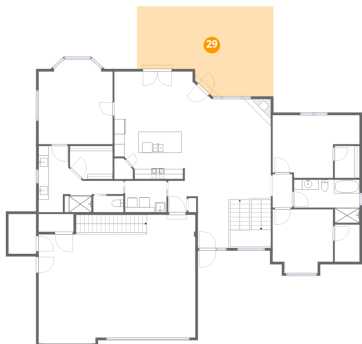
28 Floor 2 - Pantry



Dimensions: 3'8" x 4'1"
Area: 13 sq. ft
Counted as living area: Yes

Heated: Yes
Finished: Yes
Enclosed: Yes
Contiguous: Yes
Permitted: Yes
Wet space: No
Addition: No
Conversion: No

29 Floor 2 - Patio



Dimensions: 27'0" x 17'10"
Area: 414 sq. ft
Counted as living area: No

Heated: No
Finished: No
Enclosed: No
Contiguous: Yes
Permitted: Yes
Wet space: No
Addition: No
Conversion: No

5061 Prairie Lark Lane, Severance, Weld County, Colorado,
United States, 80615

30 Floor 2 - Storage



Dimensions: 6'11" x 3'6"
Area: 24 sq. ft
Counted as living area: No

Heated: No
Finished: No
Enclosed: No
Contiguous: Yes
Permitted: Yes
Wet space: No
Addition: No
Conversion: No