

Home data report

317 Drake Trail, Apple Tree Village, Cloverdale, Botetourt County, Virginia, United States, 24077



Total Area: 2625 sq. ft

Basement: 1205 sq. ft, 1st Floor: 1420 sq. ft

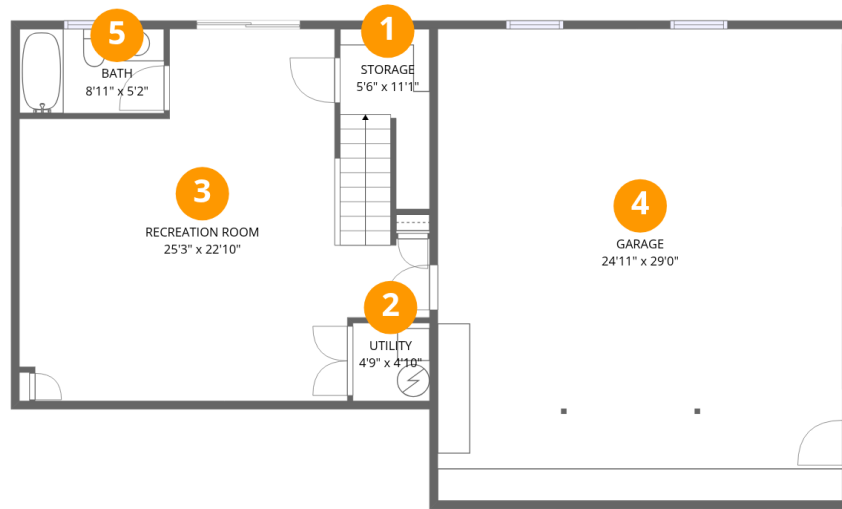
Excluded: Utility 23 sq. ft, Storage 71 sq. ft, Porch 170 sq. ft, Deck 125 sq. ft, Walls: 181 sq. ft

Property summary



Home data report

317 Drake Trail, Apple Tree Village, Cloverdale, Botetourt County, Virginia, United States, 24077



Room dimensions

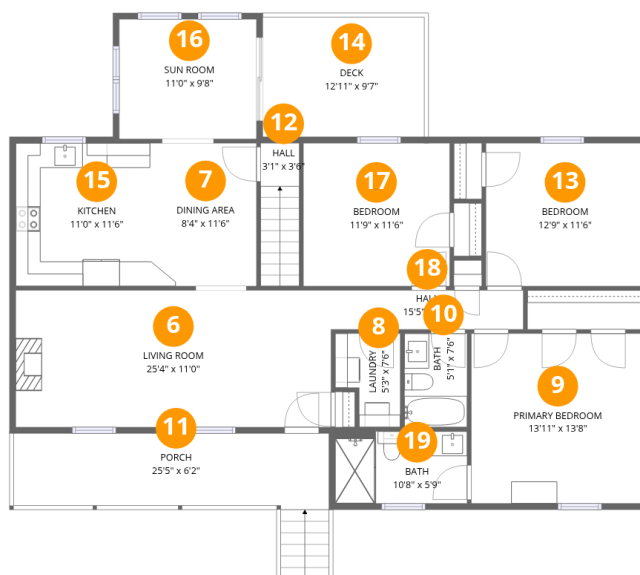
Floor 1 Below grade

Total:1205sqft Excluded: 94sqft

#		Dimensions	sqft	Counted as living area
1	Storage	5'6" x 11'11"	68 sq. ft	No
2	Utility	4'9" x 4'10"	23 sq. ft	No
3	Recreation Room	25'3" x 22'10"	421 sq. ft	Yes
4	Garage	24'11" x 29'0"	722 sq. ft	Yes
5	Bath	8'11" x 5'2"	46 sq. ft	Yes

Home data report

317 Drake Trail, Apple Tree Village, Cloverdale, Botetourt County, Virginia, United States, 24077



Room dimensions

Floor 2

Total:1420sqft Excluded: 295sqft

#		Dimensions	sqft	Counted as living area
6	Living Room	25'4" x 11'0"	280 sq. ft	Yes
7	Dining Area	8'4" x 11'6"	96 sq. ft	Yes
8	Laundry	5'3" x 7'6"	33 sq. ft	Yes
9	Primary Bedroom	13'11" x 13'8"	190 sq. ft	Yes
10	Bath	5'1" x 7'6"	38 sq. ft	Yes
11	Porch	25'5" x 6'2"	170 sq. ft	No
12	Hall	3'1" x 3'6"	36 sq. ft	Yes
13	Bedroom	12'9" x 11'6"	147 sq. ft	Yes
14	Deck	12'11" x 9'7"	125 sq. ft	No
15	Kitchen	11'0" x 11'6"	127 sq. ft	Yes
16	Sun Room	11'0" x 9'8"	107 sq. ft	Yes

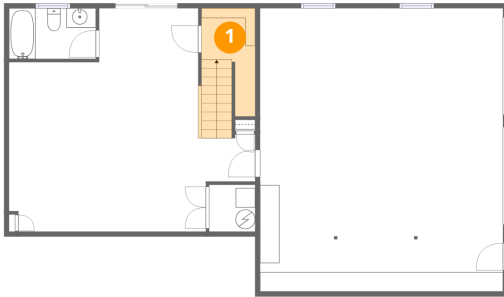
Home data report

**317 Drake Trail, Apple Tree Village, Cloverdale, Botetourt
County, Virginia, United States, 24077**

#		Dimensions	sqft	Counted as living area
17	Bedroom	11'9" x 11'6"	136 sq. ft	Yes
18	Hall	15'5" x 3'2"	49 sq. ft	Yes
19	Bath	10'8" x 5'9"	60 sq. ft	Yes

317 Drake Trail, Apple Tree Village, Cloverdale, Botetourt
County, Virginia, United States, 24077

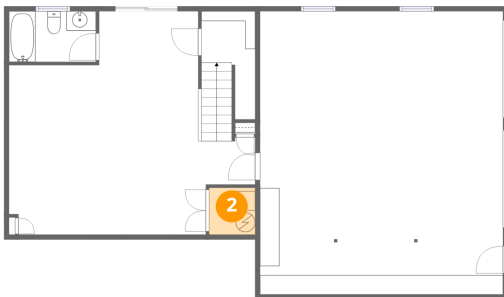
1 Floor 1 - Storage



Dimensions: 5'6" x 11'1"
Area: 68 sq. ft
Counted as living area: No

Heated: No
Finished: Yes
Enclosed: No
Contiguous: Yes
Permitted: Yes
Wet space: No
Addition: No
Conversion: No

2 Floor 1 - Utility

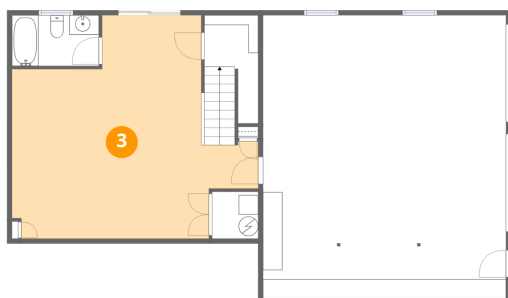


Dimensions: 4'9" x 4'10"
Area: 23 sq. ft
Counted as living area: No

Heated: Yes
Finished: No
Enclosed: Yes
Contiguous: Yes
Permitted: Yes
Wet space: No
Addition: No
Conversion: No

317 Drake Trail, Apple Tree Village, Cloverdale, Botetourt County, Virginia, United States, 24077

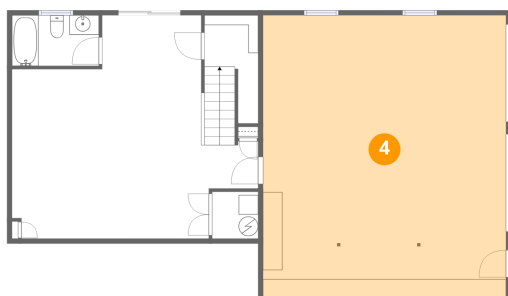
3 Floor 1 - Recreation Room



Dimensions: 25'3" x 22'10"
Area: 421 sq. ft
Counted as living area: Yes

Heated: Yes
Finished: Yes
Enclosed: Yes
Contiguous: Yes
Permitted: Yes
Wet space: No
Addition: No
Conversion: No

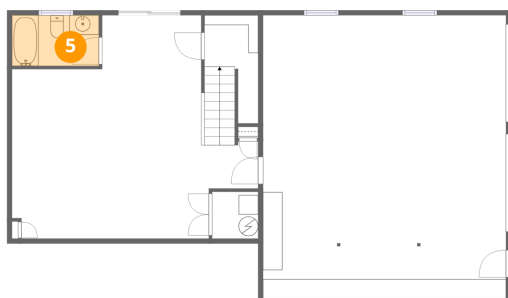
4 Floor 1 - Garage



Dimensions: 24'11" x 29'0"
Area: 722 sq. ft
Counted as living area: No

Heated: No
Finished: Yes
Enclosed: Yes
Contiguous: Yes
Permitted: Yes
Wet space: No
Addition: No
Conversion: No

5 Floor 1 - Bath

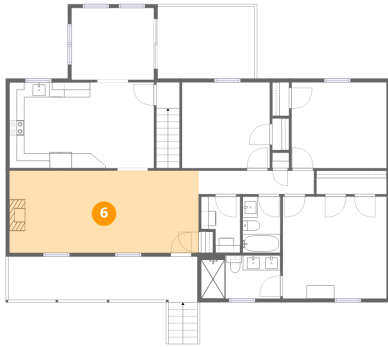


Dimensions: 8'11" x 5'2"
Area: 46 sq. ft
Counted as living area: Yes

Heated: Yes
Finished: Yes
Enclosed: Yes
Contiguous: Yes
Permitted: Yes
Wet space: Yes
Addition: No
Conversion: No

317 Drake Trail, Apple Tree Village, Cloverdale, Botetourt
County, Virginia, United States, 24077

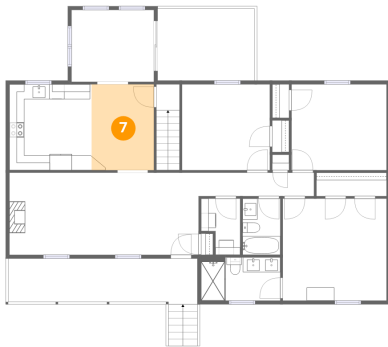
6 Floor 2 - Living Room



Dimensions: 25'4" x 11'0"
Area: 280 sq. ft
Counted as living area: Yes

Heated: Yes
Finished: Yes
Enclosed: Yes
Contiguous: Yes
Permitted: Yes
Wet space: No
Addition: No
Conversion: No

7 Floor 2 - Dining Area



Dimensions: 8'4" x 11'6"
Area: 96 sq. ft
Counted as living area: Yes

Heated: Yes
Finished: Yes
Enclosed: Yes
Contiguous: Yes
Permitted: Yes
Wet space: No
Addition: No
Conversion: No

8 Floor 2 - Laundry



Dimensions: 5'3" x 7'6"
Area: 33 sq. ft
Counted as living area: Yes

Heated: Yes
Finished: Yes
Enclosed: Yes
Contiguous: Yes
Permitted: Yes
Wet space: No
Addition: No
Conversion: No

317 Drake Trail, Apple Tree Village, Cloverdale, Botetourt County, Virginia, United States, 24077

9 Floor 2 - Primary Bedroom



Dimensions: 13'11" x 13'8"
Area: 190 sq. ft
Counted as living area: Yes

Heated: Yes
Finished: Yes
Enclosed: Yes
Contiguous: Yes
Permitted: Yes
Wet space: No
Addition: No
Conversion: No

10 Floor 2 - Bath



Dimensions: 5'1" x 7'6"
Area: 38 sq. ft
Counted as living area: Yes

Heated: Yes
Finished: Yes
Enclosed: Yes
Contiguous: Yes
Permitted: Yes
Wet space: Yes
Addition: No
Conversion: No

11 Floor 2 - Porch

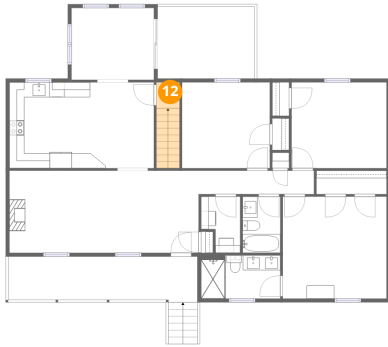


Dimensions: 25'5" x 6'2"
Area: 170 sq. ft
Counted as living area: No

Heated: No
Finished: No
Enclosed: No
Contiguous: Yes
Permitted: Yes
Wet space: No
Addition: No
Conversion: No

317 Drake Trail, Apple Tree Village, Cloverdale, Botetourt
County, Virginia, United States, 24077

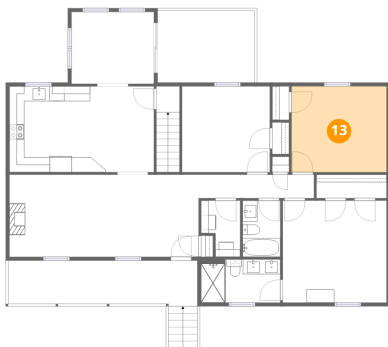
12 Floor 2 - Hall



Dimensions: 3'1" x 3'6"
Area: 36 sq. ft
Counted as living area: Yes

Heated: Yes
Finished: Yes
Enclosed: Yes
Contiguous: Yes
Permitted: Yes
Wet space: No
Addition: No
Conversion: No

13 Floor 2 - Bedroom



Dimensions: 12'9" x 11'6"
Area: 147 sq. ft
Counted as living area: Yes

Heated: Yes
Finished: Yes
Enclosed: Yes
Contiguous: Yes
Permitted: Yes
Wet space: No
Addition: No
Conversion: No

14 Floor 2 - Deck

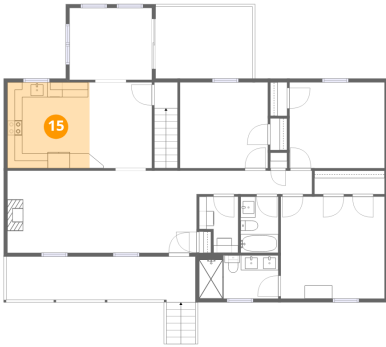


Dimensions: 12'11" x 9'7"
Area: 125 sq. ft
Counted as living area: No

Heated: No
Finished: No
Enclosed: No
Contiguous: Yes
Permitted: Yes
Wet space: No
Addition: No
Conversion: No

317 Drake Trail, Apple Tree Village, Cloverdale, Botetourt
County, Virginia, United States, 24077

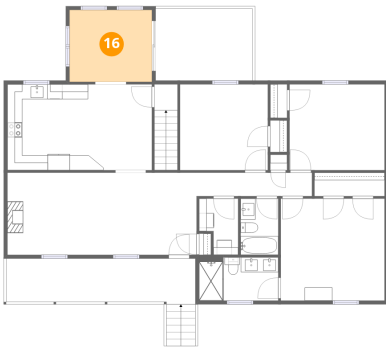
15 Floor 2 - Kitchen



Dimensions: 11'0" x 11'6"
Area: 127 sq. ft
Counted as living area: Yes

Heated: Yes
Finished: Yes
Enclosed: Yes
Contiguous: Yes
Permitted: Yes
Wet space: No
Addition: No
Conversion: No

16 Floor 2 - Sun Room



Dimensions: 11'0" x 9'8"
Area: 107 sq. ft
Counted as living area: Yes

Heated: Yes
Finished: Yes
Enclosed: Yes
Contiguous: Yes
Permitted: Yes
Wet space: No
Addition: No
Conversion: No

17 Floor 2 - Bedroom

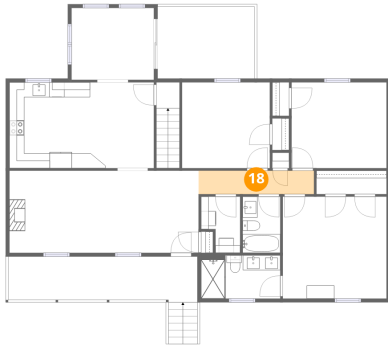


Dimensions: 11'9" x 11'6"
Area: 136 sq. ft
Counted as living area: Yes

Heated: Yes
Finished: Yes
Enclosed: Yes
Contiguous: Yes
Permitted: Yes
Wet space: No
Addition: No
Conversion: No

317 Drake Trail, Apple Tree Village, Cloverdale, Botetourt
County, Virginia, United States, 24077

18 Floor 2 - Hall



Dimensions: 15'5" x 3'2"
Area: 49 sq. ft
Counted as living area: Yes

Heated: Yes
Finished: Yes
Enclosed: Yes
Contiguous: Yes
Permitted: Yes
Wet space: No
Addition: No
Conversion: No

19 Floor 2 - Bath



Dimensions: 10'8" x 5'9"
Area: 60 sq. ft
Counted as living area: Yes

Heated: Yes
Finished: Yes
Enclosed: Yes
Contiguous: Yes
Permitted: Yes
Wet space: Yes
Addition: No
Conversion: No