

## Home data report

# 4345 Santo Domingo St,A,Santa Fe,NM,US, A



**Total Area: 1332 sq. ft**

1st Floor: 770 sq. ft, 2nd Floor: 562 sq. ft

Excluded: Garage 369 sq. ft, Patio 87 sq. ft, Porch 46 sq. ft, Open to below 192 sq. ft, Walls: 130 sq. ft

## Property summary



# Home data report

## 4345 Santo Domingo St,A,Santa Fe,NM,US, A



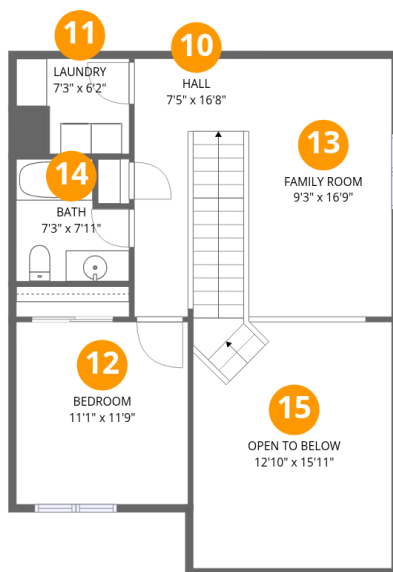
### Room dimensions

Floor 1

Total:770sqft

Excluded: 502sqft

#		Dimensions	sqft	Counted as living area
1	Primary Bath	11'1" x 9'2"	102 sq. ft	Yes
2	Patio	9'2" x 10'4"	95 sq. ft	No
3	Primary Bedroom	11'1" x 13'7"	151 sq. ft	Yes
4	W.I.C.	11'1" x 5'4"	60 sq. ft	Yes
5	Dining Area	9'3" x 6'8"	62 sq. ft	Yes
6	Porch	7'0" x 6'7"	46 sq. ft	No
7	Garage	18'10" x 19'6"	367 sq. ft	No
8	Kitchen	12'10" x 11'7"	149 sq. ft	Yes
9	Living Room	16'8" x 14'8"	244 sq. ft	Yes



## Room dimensions

Floor 2

Total:562sqft

Excluded: 192sqft

#		Dimensions	sqft	Counted as living area
10	Hall	7'5" x 16'8"	123 sq. ft	Yes
11	Laundry	7'3" x 6'2"	45 sq. ft	Yes
12	Bedroom	11'1" x 11'9"	130 sq. ft	Yes
13	Family Room	9'3" x 16'9"	155 sq. ft	Yes
14	Bath	7'3" x 7'11"	57 sq. ft	Yes
15	Open To Below	12'10" x 15'11"	204 sq. ft	No

## 1 Floor 1 - Primary Bath



Dimensions: 11'1" x 9'2"  
Area: 102 sq. ft  
Counted as living area: Yes

Heated: Yes  
Finished: Yes  
Enclosed: Yes  
Contiguous: Yes  
Permitted: Yes  
Wet space: Yes  
Addition: No  
Conversion: No

## 2 Floor 1 - Patio



Dimensions: 9'2" x 10'4"  
Area: 95 sq. ft  
Counted as living area: No

Heated: No  
Finished: No  
Enclosed: No  
Contiguous: Yes  
Permitted: Yes  
Wet space: No  
Addition: No  
Conversion: No

### 3 Floor 1 - Primary Bedroom



Dimensions: 11'1" x 13'7"  
Area: 151 sq. ft  
Counted as living area: Yes

Heated: Yes  
Finished: Yes  
Enclosed: Yes  
Contiguous: Yes  
Permitted: Yes  
Wet space: No  
Addition: No  
Conversion: No

### 4 Floor 1 - W.I.C.



Dimensions: 11'1" x 5'4"  
Area: 60 sq. ft  
Counted as living area: Yes

Heated: Yes  
Finished: Yes  
Enclosed: Yes  
Contiguous: Yes  
Permitted: Yes  
Wet space: No  
Addition: No  
Conversion: No

### 5 Floor 1 - Dining Area



Dimensions: 9'3" x 6'8"  
Area: 62 sq. ft  
Counted as living area: Yes

Heated: Yes  
Finished: Yes  
Enclosed: Yes  
Contiguous: Yes  
Permitted: Yes  
Wet space: No  
Addition: No  
Conversion: No

## 6 Floor 1 - Porch



Dimensions: 7'0" x 6'7"  
Area: 46 sq. ft  
Counted as living area: No

Heated: No  
Finished: No  
Enclosed: No  
Contiguous: Yes  
Permitted: Yes  
Wet space: No  
Addition: No  
Conversion: No

## 7 Floor 1 - Garage



Dimensions: 18'10" x 19'6"  
Area: 367 sq. ft  
Counted as living area: No

Heated: No  
Finished: No  
Enclosed: Yes  
Contiguous: Yes  
Permitted: Yes  
Wet space: No  
Addition: No  
Conversion: No

## 8 Floor 1 - Kitchen



Dimensions: 12'10" x 11'7"  
Area: 149 sq. ft  
Counted as living area: Yes

Heated: Yes  
Finished: Yes  
Enclosed: Yes  
Contiguous: Yes  
Permitted: Yes  
Wet space: No  
Addition: No  
Conversion: No

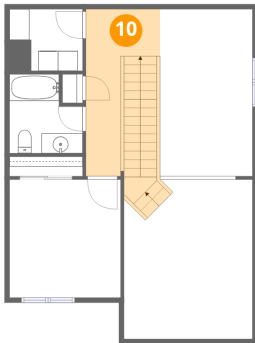
## 9 Floor 1 - Living Room



Dimensions: 16'8" x 14'8"  
Area: 244 sq. ft  
Counted as living area: Yes

Heated: Yes  
Finished: Yes  
Enclosed: Yes  
Contiguous: Yes  
Permitted: Yes  
Wet space: No  
Addition: No  
Conversion: No

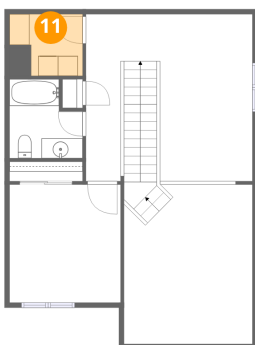
## 10 Floor 2 - Hall



Dimensions: 7'5" x 16'8"  
Area: 123 sq. ft  
Counted as living area: Yes

Heated: Yes  
Finished: Yes  
Enclosed: Yes  
Contiguous: Yes  
Permitted: Yes  
Wet space: No  
Addition: No  
Conversion: No

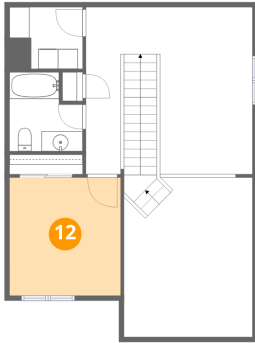
## 11 Floor 2 - Laundry



Dimensions: 7'3" x 6'2"  
Area: 45 sq. ft  
Counted as living area: Yes

Heated: Yes  
Finished: Yes  
Enclosed: Yes  
Contiguous: Yes  
Permitted: Yes  
Wet space: No  
Addition: No  
Conversion: No

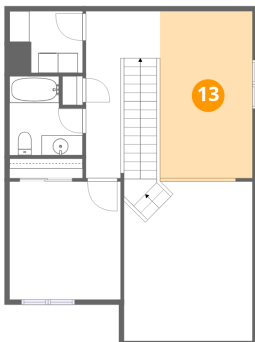
## 12 Floor 2 - Bedroom



Dimensions: 11'1" x 11'9"  
Area: 130 sq. ft  
Counted as living area: Yes

Heated: Yes  
Finished: Yes  
Enclosed: Yes  
Contiguous: Yes  
Permitted: Yes  
Wet space: No  
Addition: No  
Conversion: No

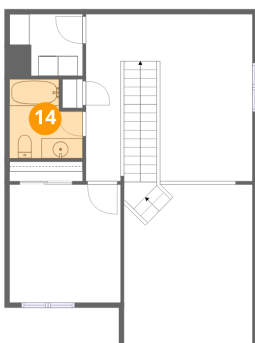
## 13 Floor 2 - Family Room



Dimensions: 9'3" x 16'9"  
Area: 155 sq. ft  
Counted as living area: Yes

Heated: Yes  
Finished: Yes  
Enclosed: Yes  
Contiguous: Yes  
Permitted: Yes  
Wet space: No  
Addition: No  
Conversion: No

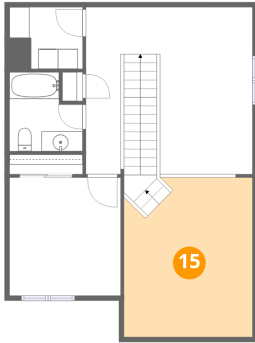
## 14 Floor 2 - Bath



Dimensions: 7'3" x 7'11"  
Area: 57 sq. ft  
Counted as living area: Yes

Heated: Yes  
Finished: Yes  
Enclosed: Yes  
Contiguous: Yes  
Permitted: Yes  
Wet space: Yes  
Addition: No  
Conversion: No

**15** Floor 2 - Open To Below



Dimensions: 12'10" x 15'11"  
Area: 204 sq. ft  
Counted as living area: No

Heated: No  
Finished: No  
Enclosed: No  
Contiguous: Yes  
Permitted: No  
Wet space: No  
Addition: No  
Conversion: No