

Home report

8237 Silkwood Drive, Burnside Farms, Mechanicsville, Hanover County, Virginia, United States, 23116



Total Area: 2391 sq. ft

Floor 1: 1021 sq. ft, Floor 2: 1370 sq. ft, Floor 3: 0 sq. ft
Excluded: Garage 411 sq. ft, Screened porch 263 sq. ft, Fireplace 7 sq. ft, Low ceiling 339 sq. ft, Attic 301 sq. ft, Walls: 265 sq. ft

Property summary



3
Floors



4
Bedrooms



2
Bathrooms

Home report

**8237 Silkwood Drive, Burnside Farms, Mechanicsville, Hanover
County, Virginia, United States, 23116**



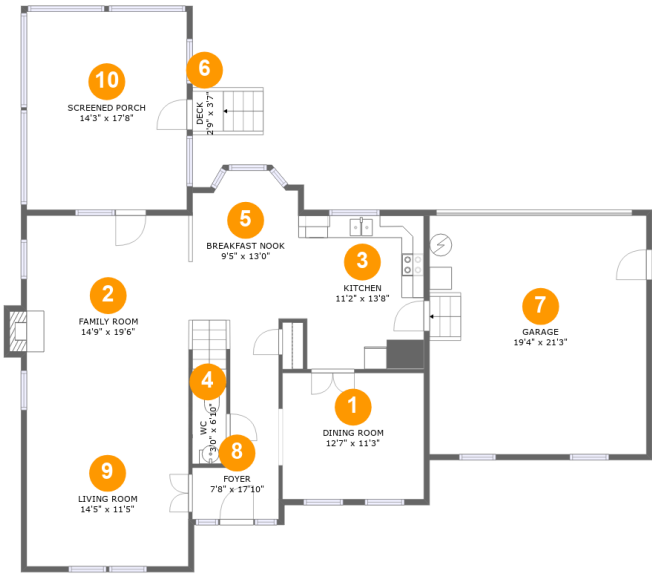
1
Half baths



1
Garages

Home report

8237 Silkwood Drive, Burnside Farms, Mechanicsville, Hanover County, Virginia, United States, 23116



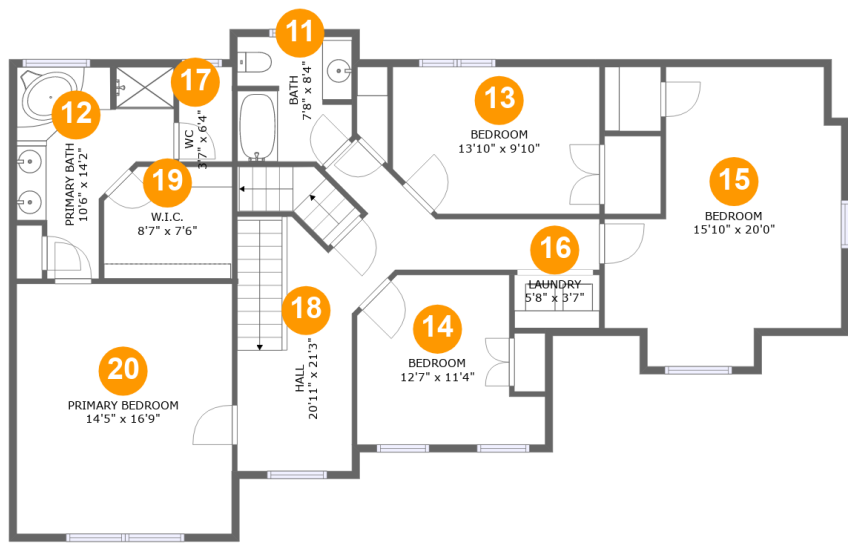
Room dimensions

Floor 1 Total:1021sqft Excluded: 681sqft

#		Max Dimensions	sqft	Included
1	Dining Room	12'7" x 11'3"	142 sq. ft	Yes
2	Family Room	14'9" x 19'6"	290 sq. ft	Yes
3	Kitchen	11'2" x 13'8"	150 sq. ft	Yes
4	WC	3'0" x 6'10"	21 sq. ft	Yes
5	Breakfast Nook	9'5" x 13'0"	134 sq. ft	Yes
6	Deck	2'9" x 3'7"	10 sq. ft	Yes
7	Garage	19'4" x 21'3"	411 sq. ft	No
8	Foyer	7'8" x 17'10"	93 sq. ft	Yes
9	Living Room	14'5" x 11'5"	164 sq. ft	Yes
10	Screened Porch	14'3" x 17'8"	252 sq. ft	No

Home report

8237 Silkwood Drive, Burnside Farms, Mechanicsville, Hanover County, Virginia, United States, 23116



Room dimensions

Floor 2

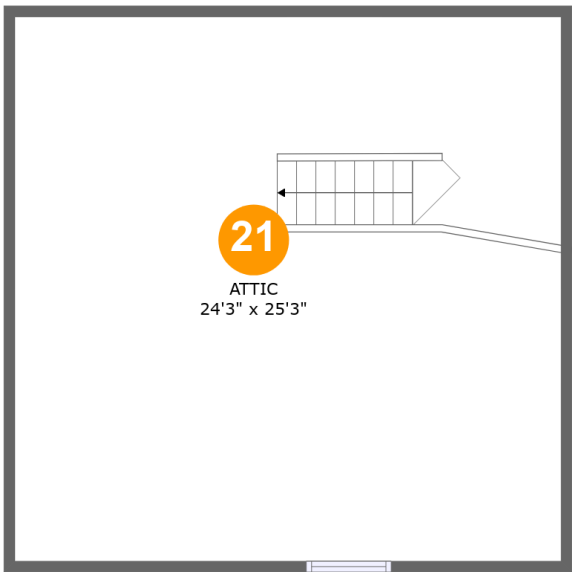
Total:1370sqft

Excluded: 0sqft

#		Max Dimensions	sqft	Included
11	Bath	7'8" x 8'4"	61 sq. ft	Yes
12	Primary Bath	10'6" x 14'2"	104 sq. ft	Yes
13	Bedroom	13'10" x 9'10"	132 sq. ft	Yes
14	Bedroom	12'7" x 11'4"	120 sq. ft	Yes
15	Bedroom	15'10" x 20'0"	249 sq. ft	Yes
16	Laundry	5'8" x 3'7"	20 sq. ft	Yes
17	WC	3'7" x 6'4"	23 sq. ft	Yes
18	Hall	20'11" x 21'3"	205 sq. ft	Yes
19	W.I.C.	8'7" x 7'6"	62 sq. ft	Yes
20	Primary Bedroom	14'5" x 16'9"	241 sq. ft	Yes

Home report

8237 Silkwood Drive, Burnside Farms, Mechanicsville, Hanover
County, Virginia, United States, 23116

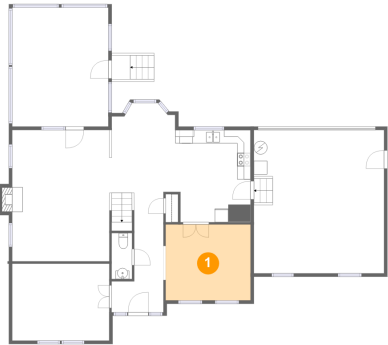


Room dimensions

Floor 3 Total:0sqft Excluded: 640sqft

#		Max Dimensions	sqft	Included
21	Attic	24'3" x 25'3"	301 sq. ft	No

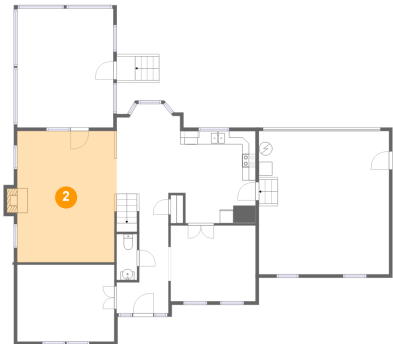
1 Floor 1 - Dining Room



Max Dimensions: 12'7" x 11'3"
Calculated Area: 142 sq. ft
Included: Yes

Heated: Yes
Finished: Yes
Enclosed: Yes
Contiguous: Yes
Permitted: Yes
Wet space: No
Addition: No
Conversion: No

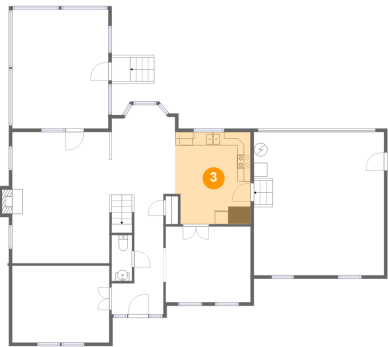
2 Floor 1 - Family Room



Max Dimensions: 14'9" x 19'6"
Calculated Area: 290 sq. ft
Included: Yes

Heated: Yes
Finished: Yes
Enclosed: Yes
Contiguous: Yes
Permitted: Yes
Wet space: No
Addition: No
Conversion: No

3 Floor 1 - Kitchen



Max Dimensions: 11'2" x 13'8"
Calculated Area: 150 sq. ft
Included: Yes

Heated: Yes
Finished: Yes
Enclosed: Yes
Contiguous: Yes
Permitted: Yes
Wet space: No
Addition: No
Conversion: No

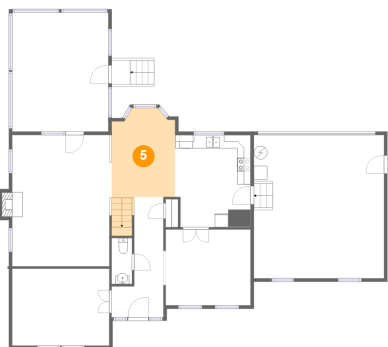
4 Floor 1 - WC



Max Dimensions: 3'0" x 6'10"
Calculated Area: 21 sq. ft
Included: Yes

Heated: Yes
Finished: Yes
Enclosed: Yes
Contiguous: Yes
Permitted: Yes
Wet space: Yes
Addition: No
Conversion: No

5 Floor 1 - Breakfast Nook

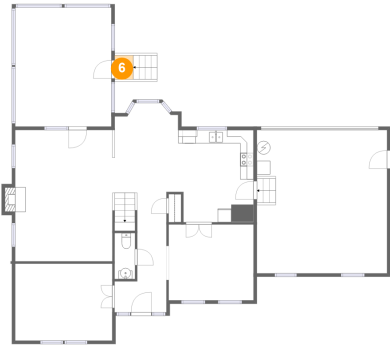


Max Dimensions: 9'5" x 13'0"
Calculated Area: 134 sq. ft
Included: Yes

Heated: Yes
Finished: Yes
Enclosed: Yes
Contiguous: Yes
Permitted: Yes
Wet space: No
Addition: No
Conversion: No

8237 Silkwood Drive, Burnside Farms, Mechanicsville, Hanover
County, Virginia, United States, 23116

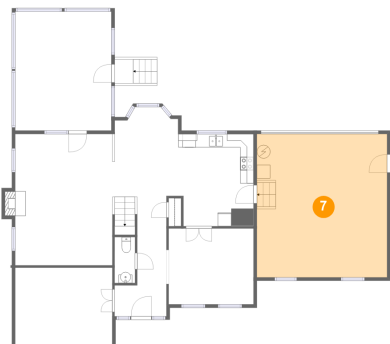
6 Floor 1 - Deck



Max Dimensions: 2'9" x 3'7"
Calculated Area: 10 sq. ft
Included: Yes

Heated: No
Finished: Yes
Enclosed: No
Contiguous: Yes
Permitted: Yes
Wet space: No
Addition: No
Conversion: No

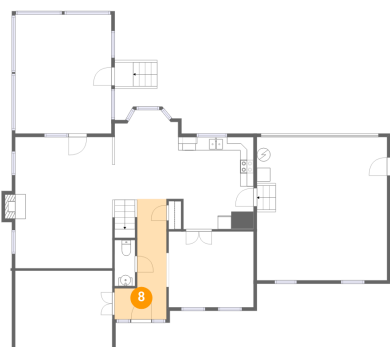
7 Floor 1 - Garage



Max Dimensions: 19'4" x
21'3"
Calculated Area: 411 sq. ft
Included: No

Heated: No
Finished: No
Enclosed: Yes
Contiguous:
Yes
Permitted: Yes
Wet space: No
Addition: No
Conversion: No

8 Floor 1 - Foyer



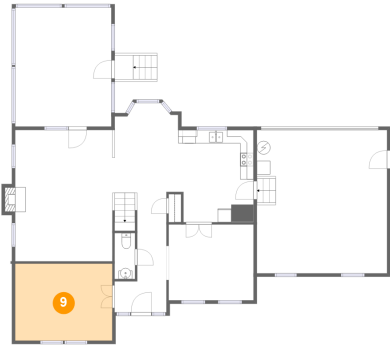
Max Dimensions: 7'8" x
17'10"
Calculated Area: 93 sq. ft
Included: Yes

Heated: Yes
Finished: Yes
Enclosed: Yes
Contiguous:
Yes
Permitted: Yes
Wet space: No
Addition: No
Conversion: No

Home report

8237 Silkwood Drive, Burnside Farms, Mechanicsville, Hanover County, Virginia, United States, 23116

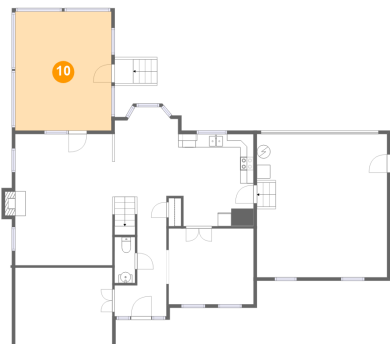
9 Floor 1 - Living Room



Max Dimensions: 14'5" x 11'5"
Calculated Area: 164 sq. ft
Included: Yes

Heated: Yes
Finished: Yes
Enclosed: Yes
Contiguous: Yes
Permitted: Yes
Wet space: No
Addition: No
Conversion: No

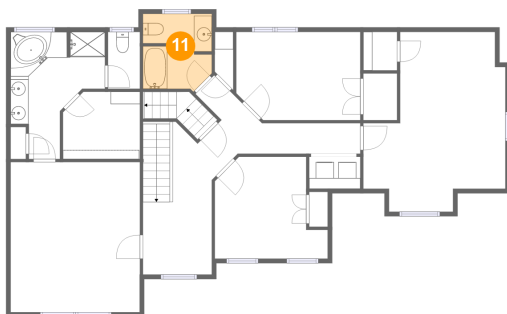
10 Floor 1 - Screened Porch



Max Dimensions: 14'3" x 17'8"
Calculated Area: 252 sq. ft
Included: No

Heated: No
Finished: Yes
Enclosed: No
Contiguous: Yes
Permitted: Yes
Wet space: No
Addition: No
Conversion: No

11 Floor 2 - Bath



Max Dimensions: 7'8" x 8'4"
Calculated Area: 61 sq. ft
Included: Yes

Heated: Yes
Finished: Yes
Enclosed: Yes
Contiguous: Yes
Permitted: Yes
Wet space: Yes
Addition: No
Conversion: No

8237 Silkwood Drive, Burnside Farms, Mechanicsville, Hanover County, Virginia, United States, 23116

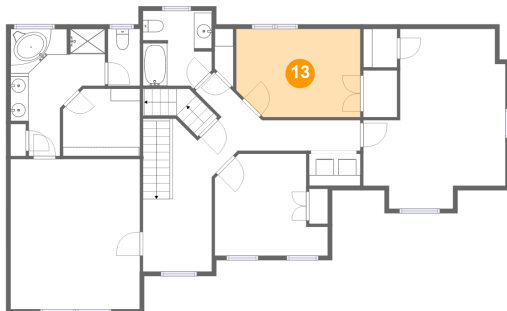
12 Floor 2 - Primary Bath



Max Dimensions: 10'6" x 14'2"
Calculated Area: 104 sq. ft
Included: Yes

Heated: Yes
Finished: Yes
Enclosed: Yes
Contiguous: Yes
Permitted: Yes
Wet space: Yes
Addition: No
Conversion: No

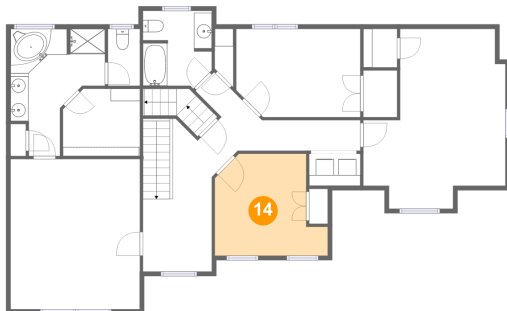
13 Floor 2 - Bedroom



Max Dimensions: 13'10" x 9'10"
Calculated Area: 132 sq. ft
Included: Yes

Heated: Yes
Finished: Yes
Enclosed: Yes
Contiguous: Yes
Permitted: Yes
Wet space: No
Addition: No
Conversion: No

14 Floor 2 - Bedroom

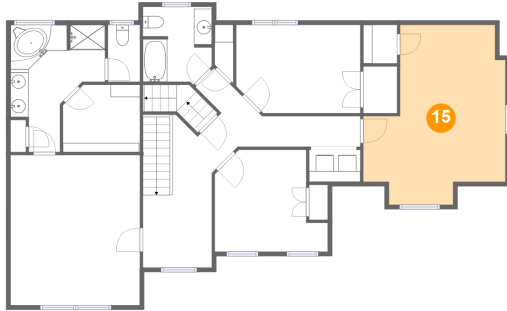


Max Dimensions: 12'7" x 11'4"
Calculated Area: 120 sq. ft
Included: Yes

Heated: Yes
Finished: Yes
Enclosed: Yes
Contiguous: Yes
Permitted: Yes
Wet space: No
Addition: No
Conversion: No

8237 Silkwood Drive, Burnside Farms, Mechanicsville, Hanover
County, Virginia, United States, 23116

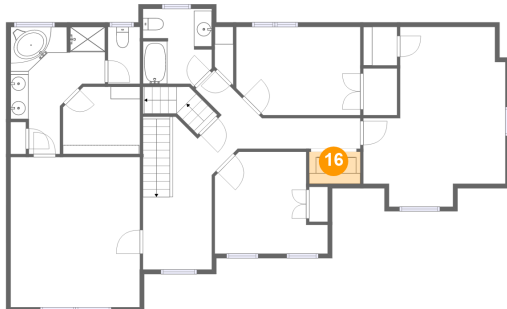
15 Floor 2 - Bedroom



Max Dimensions: 15'10" x 20'0"
Calculated Area: 249 sq. ft
Included: Yes

Heated: Yes
Finished: Yes
Enclosed: Yes
Contiguous: Yes
Permitted: Yes
Wet space: No
Addition: No
Conversion: No

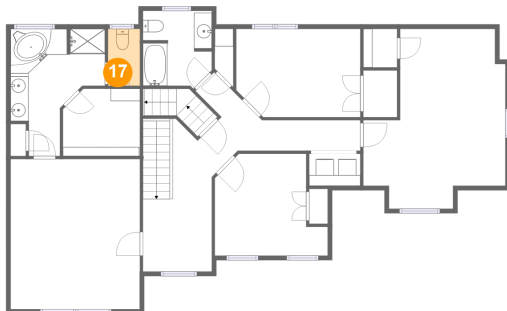
16 Floor 2 - Laundry



Max Dimensions: 5'8" x 3'7"
Calculated Area: 20 sq. ft
Included: Yes

Heated: Yes
Finished: Yes
Enclosed: Yes
Contiguous: Yes
Permitted: Yes
Wet space: No
Addition: No
Conversion: No

17 Floor 2 - WC

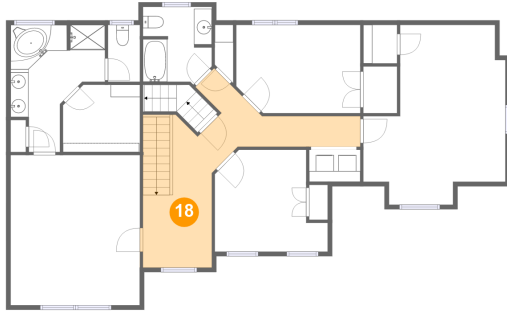


Max Dimensions: 3'7" x 6'4"
Calculated Area: 23 sq. ft
Included: Yes

Heated: Yes
Finished: Yes
Enclosed: Yes
Contiguous: Yes
Permitted: Yes
Wet space: Yes
Addition: No
Conversion: No

8237 Silkwood Drive, Burnside Farms, Mechanicsville, Hanover
County, Virginia, United States, 23116

18 Floor 2 - Hall



Max Dimensions: 20'11" x 21'3"
Calculated Area: 205 sq. ft
Included: Yes

Heated: Yes
Finished: Yes
Enclosed: Yes
Contiguous: Yes
Permitted: Yes
Wet space: No
Addition: No
Conversion: No

19 Floor 2 - W.I.C.



Max Dimensions: 8'7" x 7'6"
Calculated Area: 62 sq. ft
Included: Yes

Heated: Yes
Finished: Yes
Enclosed: Yes
Contiguous: Yes
Permitted: Yes
Wet space: No
Addition: No
Conversion: No

20 Floor 2 - Primary Bedroom



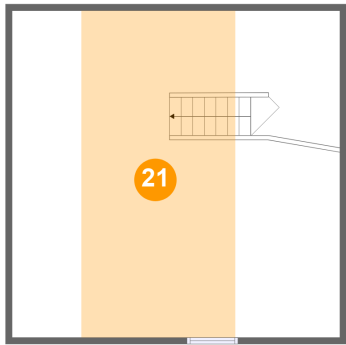
Max Dimensions: 14'5" x 16'9"
Calculated Area: 241 sq. ft
Included: Yes

Heated: Yes
Finished: Yes
Enclosed: Yes
Contiguous: Yes
Permitted: Yes
Wet space: No
Addition: No
Conversion: No

Home report

8237 Silkwood Drive, Burnside Farms, Mechanicsville, Hanover
County, Virginia, United States, 23116

21 Floor 3 - Attic



Max Dimensions: 24'3" x 25'3"
Calculated Area: 301 sq. ft
Included: No

Heated: No
Finished: No
Enclosed: Yes
Contiguous: Yes
Permitted: Yes
Wet space: No
Addition: No
Conversion: No