

Home data report

# 2854 Bridgewater Dr, Bryans Road, MD, US



**Total Area: 3189 sq. ft**

Basement: 831 sq. ft, 1st Floor: 1040 sq. ft, 2nd Floor: 1318 sq. ft

Excluded: Utility 207 sq. ft, Garage 438 sq. ft, Fireplace 9 sq. ft, Walls: 263 sq. ft

## Property summary

 **3** Floors

 **4** Bedrooms

 **3** Bathrooms

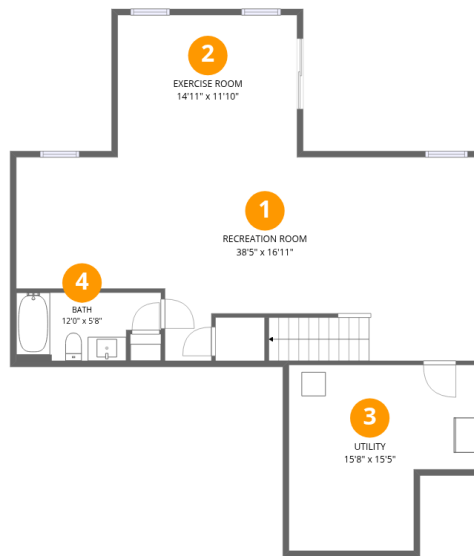
Home data report

## 2854 Bridgewater Dr, Bryans Road, MD, US

 **1**  
Half baths

 **1**  
Garages

# 2854 Bridgewater Dr, Bryans Road, MD, US



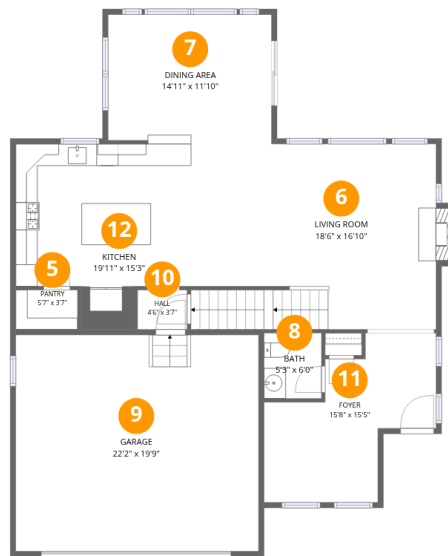
## Room dimensions

Floor 1 Below grade

Total:831sqft

Excluded: 207sqft

#		Dimensions	sqft	Counted as living area
1	Recreation Room	38'5" x 16'11"	554 sq. ft	Yes
2	Exercise Room	14'11" x 11'10"	176 sq. ft	Yes
3	Utility	15'8" x 15'5"	207 sq. ft	No
4	Bath	12'0" x 5'8"	61 sq. ft	Yes



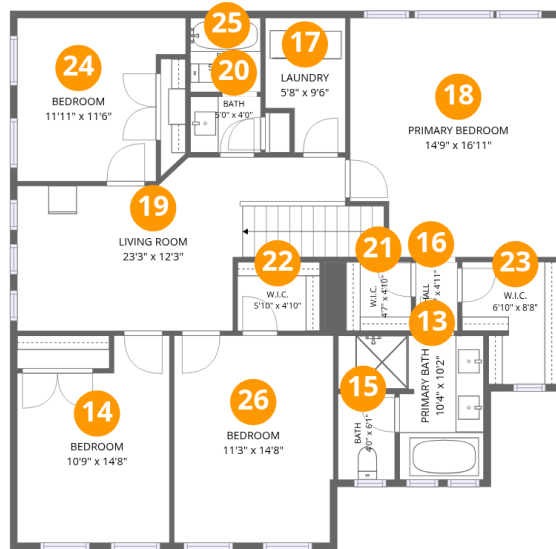
## Room dimensions

Floor 2

Total: 1040sqft

Excluded: 447sqft

#		Dimensions	sqft	Counted as living area
5	Pantry	5'7" x 3'7"	20 sq. ft	Yes
6	Living Room	18'6" x 16'10"	332 sq. ft	Yes
7	Dining Area	14'11" x 11'10"	175 sq. ft	Yes
8	Bath	5'3" x 6'0"	31 sq. ft	Yes
9	Garage	22'2" x 19'9"	438 sq. ft	No
10	Hall	4'6" x 3'7"	16 sq. ft	Yes
11	Foyer	15'8" x 15'5"	163 sq. ft	Yes
12	Kitchen	19'11" x 15'3"	277 sq. ft	Yes



## Room dimensions

Floor 3

Total: 1318 sqft Excluded: 0 sqft

#		Dimensions	sqft	Counted as living area
13	Primary Bath	10'4" x 10'2"	77 sq. ft	Yes
14	Bedroom	10'9" x 14'8"	140 sq. ft	Yes
15	Bath	4'0" x 6'1"	24 sq. ft	Yes
16	Hall	2'11" x 4'11"	14 sq. ft	Yes
17	Laundry	5'8" x 9'6"	48 sq. ft	Yes
18	Primary Bedroom	14'9" x 16'11"	240 sq. ft	Yes
19	Living Room	23'3" x 12'3"	232 sq. ft	Yes
20	Bath	5'0" x 4'0"	20 sq. ft	Yes
21	W.I.C.	4'7" x 4'10"	30 sq. ft	Yes
22	W.I.C.	5'10" x 4'10"	28 sq. ft	Yes
23	W.I.C.	6'10" x 8'8"	52 sq. ft	Yes

Home data report

**2854 Bridgewater Dr, Bryans Road, MD, US**

#		Dimensions	sqft	Counted as living area
24	Bedroom	11'11" x 11'6"	119 sq. ft	Yes
25	Bath	5'0" x 5'3"	26 sq. ft	Yes
26	Bedroom	11'3" x 14'8"	164 sq. ft	Yes

## 1 Floor 1 - Recreation Room

---



Dimensions: 38'5" x 16'11"  
Area: 554 sq. ft  
Counted as living area: Yes

Heated: Yes  
Finished: Yes  
Enclosed: Yes  
Contiguous: Yes  
Permitted: Yes  
Wet space: No  
Addition: No  
Conversion: No

## 2 Floor 1 - Exercise Room

---



Dimensions: 14'11" x 11'10"  
Area: 176 sq. ft  
Counted as living area: Yes

Heated: Yes  
Finished: Yes  
Enclosed: Yes  
Contiguous: Yes  
Permitted: Yes  
Wet space: No  
Addition: No  
Conversion: No

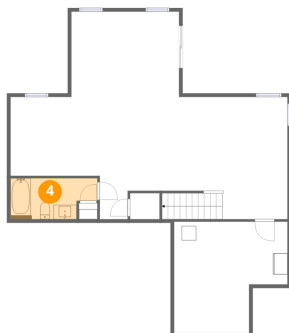
### 3 Floor 1 - Utility



Dimensions: 15'8" x 15'5"  
Area: 207 sq. ft  
Counted as living area: No

Heated: Yes  
Finished: No  
Enclosed: Yes  
Contiguous: Yes  
Permitted: Yes  
Wet space: No  
Addition: No  
Conversion: No

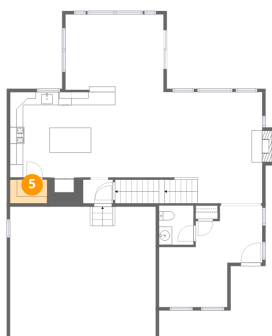
### 4 Floor 1 - Bath



Dimensions: 12'0" x 5'8"  
Area: 61 sq. ft  
Counted as living area: Yes

Heated: Yes  
Finished: Yes  
Enclosed: Yes  
Contiguous: Yes  
Permitted: Yes  
Wet space: Yes  
Addition: No  
Conversion: No

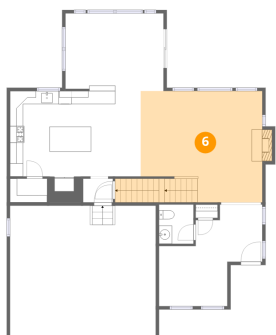
### 5 Floor 2 - Pantry



Dimensions: 5'7" x 3'7"  
Area: 20 sq. ft  
Counted as living area: Yes

Heated: Yes  
Finished: Yes  
Enclosed: Yes  
Contiguous: Yes  
Permitted: Yes  
Wet space: No  
Addition: No  
Conversion: No

## 6 Floor 2 - Living Room



Dimensions: 18'6" x 16'10"  
Area: 332 sq. ft  
Counted as living area: Yes

Heated: Yes  
Finished: Yes  
Enclosed: Yes  
Contiguous: Yes  
Permitted: Yes  
Wet space: No  
Addition: No  
Conversion: No

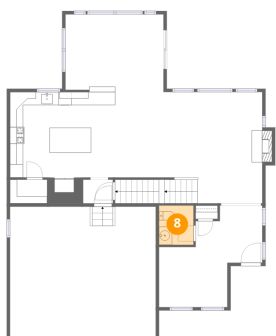
## 7 Floor 2 - Dining Area



Dimensions: 14'11" x 11'10"  
Area: 175 sq. ft  
Counted as living area: Yes

Heated: Yes  
Finished: Yes  
Enclosed: Yes  
Contiguous: Yes  
Permitted: Yes  
Wet space: No  
Addition: No  
Conversion: No

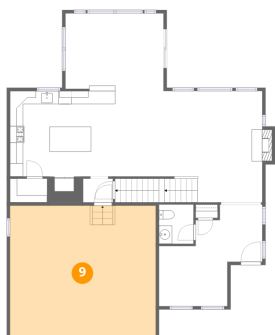
## 8 Floor 2 - Bath



Dimensions: 5'3" x 6'0"  
Area: 31 sq. ft  
Counted as living area: Yes

Heated: Yes  
Finished: Yes  
Enclosed: Yes  
Contiguous: Yes  
Permitted: Yes  
Wet space: Yes  
Addition: No  
Conversion: No

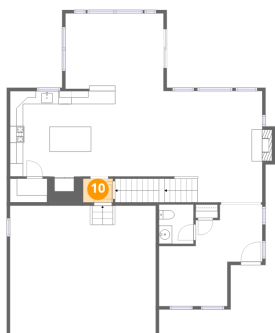
## 9 Floor 2 - Garage



Dimensions: 22'2" x 19'9"  
Area: 438 sq. ft  
Counted as living area: No

Heated: No  
Finished: No  
Enclosed: Yes  
Contiguous: Yes  
Permitted: Yes  
Wet space: No  
Addition: No  
Conversion: No

## 10 Floor 2 - Hall



Dimensions: 4'6" x 3'7"  
Area: 16 sq. ft  
Counted as living area: Yes

Heated: Yes  
Finished: Yes  
Enclosed: Yes  
Contiguous: Yes  
Permitted: Yes  
Wet space: No  
Addition: No  
Conversion: No

## 11 Floor 2 - Foyer



Dimensions: 15'8" x 15'5"  
Area: 163 sq. ft  
Counted as living area: Yes

Heated: Yes  
Finished: Yes  
Enclosed: Yes  
Contiguous: Yes  
Permitted: Yes  
Wet space: No  
Addition: No  
Conversion: No

**12** Floor 2 - Kitchen



Dimensions: 19'11" x 15'3"  
Area: 277 sq. ft  
Counted as living area: Yes

Heated: Yes  
Finished: Yes  
Enclosed: Yes  
Contiguous: Yes  
Permitted: Yes  
Wet space: No  
Addition: No  
Conversion: No

**13** Floor 3 - Primary Bath



Dimensions: 10'4" x 10'2"  
Area: 77 sq. ft  
Counted as living area: Yes

Heated: Yes  
Finished: Yes  
Enclosed: Yes  
Contiguous: Yes  
Permitted: Yes  
Wet space: Yes  
Addition: No  
Conversion: No

**14** Floor 3 - Bedroom



Dimensions: 10'9" x 14'8"  
Area: 140 sq. ft  
Counted as living area: Yes

Heated: Yes  
Finished: Yes  
Enclosed: Yes  
Contiguous: Yes  
Permitted: Yes  
Wet space: No  
Addition: No  
Conversion: No

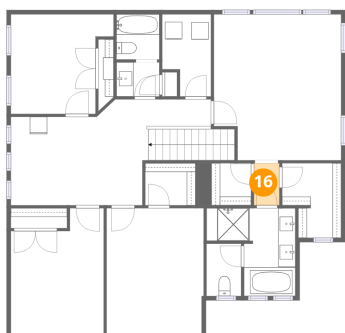
**15** Floor 3 - Bath



Dimensions: 4'0" x 6'1"  
Area: 24 sq. ft  
Counted as living area: Yes

Heated: Yes  
Finished: Yes  
Enclosed: Yes  
Contiguous: Yes  
Permitted: Yes  
Wet space: Yes  
Addition: No  
Conversion: No

**16** Floor 3 - Hall



Dimensions: 2'11" x 4'11"  
Area: 14 sq. ft  
Counted as living area: Yes

Heated: Yes  
Finished: Yes  
Enclosed: Yes  
Contiguous: Yes  
Permitted: Yes  
Wet space: No  
Addition: No  
Conversion: No

**17** Floor 3 - Laundry



Dimensions: 5'8" x 9'6"  
Area: 48 sq. ft  
Counted as living area: Yes

Heated: Yes  
Finished: Yes  
Enclosed: Yes  
Contiguous: Yes  
Permitted: Yes  
Wet space: No  
Addition: No  
Conversion: No

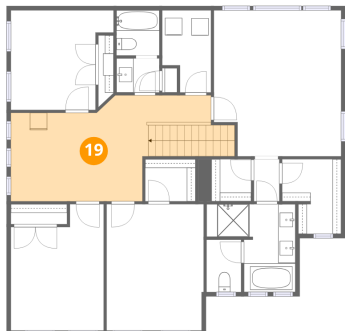
### 18 Floor 3 - Primary Bedroom



Dimensions: 14'9" x 16'11"  
Area: 240 sq. ft  
Counted as living area: Yes

Heated: Yes  
Finished: Yes  
Enclosed: Yes  
Contiguous: Yes  
Permitted: Yes  
Wet space: No  
Addition: No  
Conversion: No

### 19 Floor 3 - Living Room



Dimensions: 23'3" x 12'3"  
Area: 232 sq. ft  
Counted as living area: Yes

Heated: Yes  
Finished: Yes  
Enclosed: Yes  
Contiguous: Yes  
Permitted: Yes  
Wet space: No  
Addition: No  
Conversion: No

### 20 Floor 3 - Bath



Dimensions: 5'0" x 4'0"  
Area: 20 sq. ft  
Counted as living area: Yes

Heated: Yes  
Finished: Yes  
Enclosed: Yes  
Contiguous: Yes  
Permitted: Yes  
Wet space: Yes  
Addition: No  
Conversion: No

**21** Floor 3 - W.I.C.



Dimensions: 4'7" x 4'10"  
Area: 30 sq. ft  
Counted as living area: Yes

Heated: Yes  
Finished: Yes  
Enclosed: Yes  
Contiguous: Yes  
Permitted: Yes  
Wet space: No  
Addition: No  
Conversion: No

**22** Floor 3 - W.I.C.



Dimensions: 5'10" x 4'10"  
Area: 28 sq. ft  
Counted as living area: Yes

Heated: Yes  
Finished: Yes  
Enclosed: Yes  
Contiguous: Yes  
Permitted: Yes  
Wet space: No  
Addition: No  
Conversion: No

**23** Floor 3 - W.I.C.



Dimensions: 6'10" x 8'8"  
Area: 52 sq. ft  
Counted as living area: Yes

Heated: Yes  
Finished: Yes  
Enclosed: Yes  
Contiguous: Yes  
Permitted: Yes  
Wet space: No  
Addition: No  
Conversion: No

**24** Floor 3 - Bedroom



Dimensions: 11'11" x 11'6"  
Area: 119 sq. ft  
Counted as living area: Yes

Heated: Yes  
Finished: Yes  
Enclosed: Yes  
Contiguous: Yes  
Permitted: Yes  
Wet space: No  
Addition: No  
Conversion: No

**25** Floor 3 - Bath



Dimensions: 5'0" x 5'3"  
Area: 26 sq. ft  
Counted as living area: Yes

Heated: Yes  
Finished: Yes  
Enclosed: Yes  
Contiguous: Yes  
Permitted: Yes  
Wet space: Yes  
Addition: No  
Conversion: No

**26** Floor 3 - Bedroom



Dimensions: 11'3" x 14'8"  
Area: 164 sq. ft  
Counted as living area: Yes

Heated: Yes  
Finished: Yes  
Enclosed: Yes  
Contiguous: Yes  
Permitted: Yes  
Wet space: No  
Addition: No  
Conversion: No