

826 Valley View Rd, Fort Collins, CO, US



Total Area: 3314 sq. ft

1st Floor: 888 sq. ft, 2nd Floor: 643 sq. ft, 3rd Floor: 956 sq. ft, 4th Floor: 827 sq. ft

Excluded: Garage 666 sq. ft, Screened porch 238 sq. ft, Open to below 82 sq. ft, Walls: 328 sq. ft

Property summary

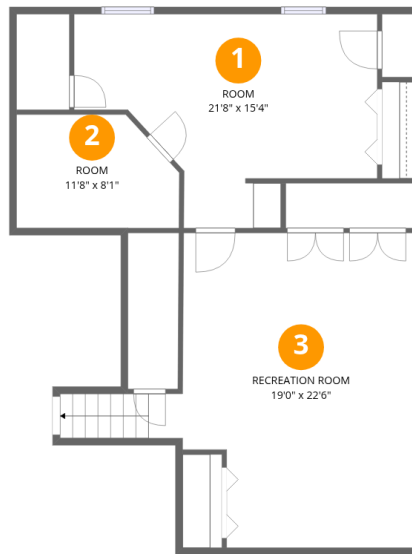


Home data report

826 Valley View Rd, Fort Collins, CO, US

 **1**
Half baths

 **1**
Garages

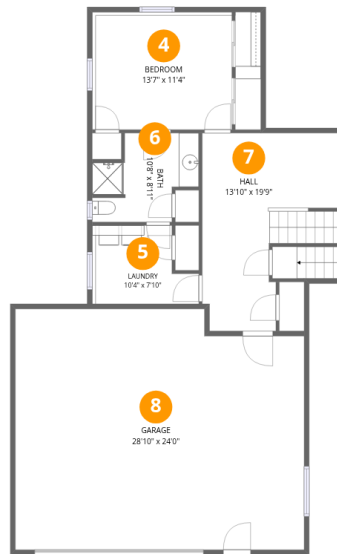


Room dimensions

Floor 1

Total:888sqft Excluded: 0sqft

#		Dimensions	sqft	Counted as living area
1	Room	21'8" x 15'4"	249 sq. ft	Yes
2	Room	11'8" x 8'1"	87 sq. ft	Yes
3	Recreation Room	19'0" x 22'6"	378 sq. ft	Yes



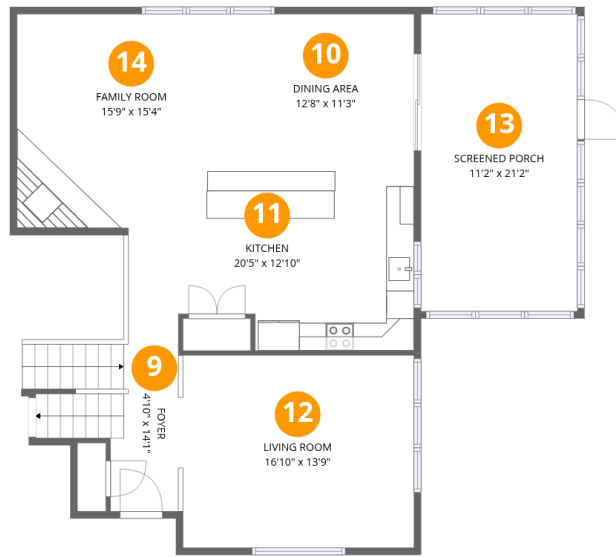
Room dimensions

Floor 2

Total: 643sqft

Excluded: 666sqft

#		Dimensions	sqft	Counted as living area
4	Bedroom	13'7" x 11'4"	164 sq. ft	Yes
5	Laundry	10'4" x 7'10"	70 sq. ft	Yes
6	Bath	10'8" x 8'11"	75 sq. ft	Yes
7	Hall	13'10" x 19'9"	211 sq. ft	Yes
8	Garage	28'10" x 24'0"	666 sq. ft	No



Room dimensions

Floor 3

Total: 956 sqft

Excluded: 238 sqft

#		Dimensions	sqft	Counted as living area
9	Foyer	4'10" x 14'1"	102 sq. ft	Yes
10	Dining Area	12'8" x 11'3"	142 sq. ft	Yes
11	Kitchen	20'5" x 12'10"	227 sq. ft	Yes
12	Living Room	16'10" x 13'9"	229 sq. ft	Yes
13	Screened Porch	11'2" x 21'2"	238 sq. ft	No
14	Family Room	15'9" x 15'4"	221 sq. ft	Yes

Home data report

826 Valley View Rd, Fort Collins, CO, US



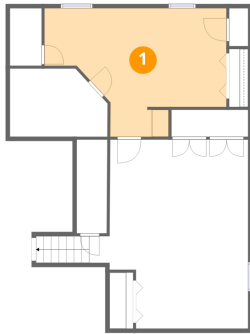
Room dimensions

Floor 4

Total:827sqft Excluded: 82sqft

#		Dimensions	sqft	Counted as living area
15	Bath	9'11" x 8'11"	70 sq. ft	Yes
16	Primary Bedroom	16'10" x 11'9"	174 sq. ft	Yes
17	Hall	11'5" x 17'3"	127 sq. ft	Yes
18	Open To Below	7'6" x 11'0"	82 sq. ft	No
19	Bath	6'11" x 8'0"	46 sq. ft	Yes
20	Bath	6'3" x 5'1"	32 sq. ft	Yes
21	Bedroom	10'5" x 13'4"	122 sq. ft	Yes
22	Bedroom	10'5" x 13'4"	138 sq. ft	Yes

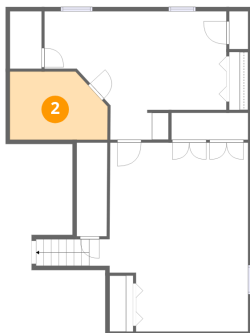
1 Floor 1 - Room



Dimensions: 21'8" x 15'4"
Area: 249 sq. ft
Counted as living area: Yes

Heated: Yes
Finished: Yes
Enclosed: Yes
Contiguous: Yes
Permitted: Yes
Wet space: No
Addition: No
Conversion: No

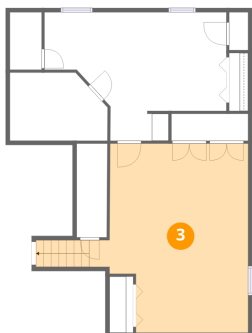
2 Floor 1 - Room



Dimensions: 11'8" x 8'1"
Area: 87 sq. ft
Counted as living area: Yes

Heated: Yes
Finished: Yes
Enclosed: Yes
Contiguous: Yes
Permitted: Yes
Wet space: No
Addition: No
Conversion: No

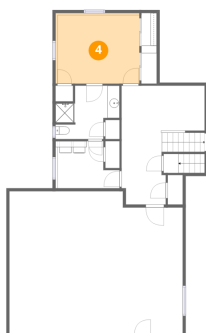
3 Floor 1 - Recreation Room



Dimensions: 19'0" x 22'6"
Area: 378 sq. ft
Counted as living area: Yes

Heated: Yes
Finished: Yes
Enclosed: Yes
Contiguous: Yes
Permitted: Yes
Wet space: No
Addition: No
Conversion: No

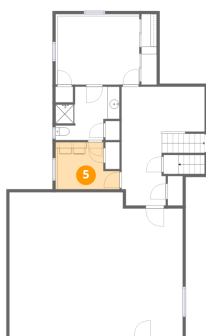
4 Floor 2 - Bedroom



Dimensions: 13'7" x 11'4"
Area: 164 sq. ft
Counted as living area: Yes

Heated: Yes
Finished: Yes
Enclosed: Yes
Contiguous: Yes
Permitted: Yes
Wet space: No
Addition: No
Conversion: No

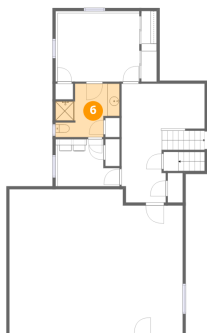
5 Floor 2 - Laundry



Dimensions: 10'4" x 7'10"
Area: 70 sq. ft
Counted as living area: Yes

Heated: Yes
Finished: Yes
Enclosed: Yes
Contiguous: Yes
Permitted: Yes
Wet space: No
Addition: No
Conversion: No

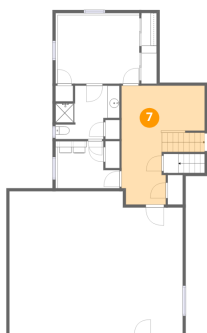
6 Floor 2 - Bath



Dimensions: 10'8" x 8'11"
Area: 75 sq. ft
Counted as living area: Yes

Heated: Yes
Finished: Yes
Enclosed: Yes
Contiguous: Yes
Permitted: Yes
Wet space: Yes
Addition: No
Conversion: No

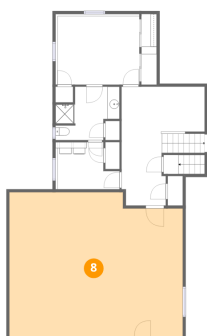
7 Floor 2 - Hall



Dimensions: 13'10" x 19'9"
Area: 211 sq. ft
Counted as living area: Yes

Heated: Yes
Finished: Yes
Enclosed: Yes
Contiguous: Yes
Permitted: Yes
Wet space: No
Addition: No
Conversion: No

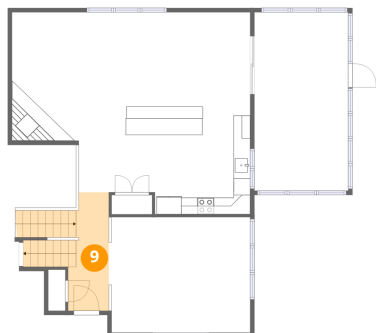
8 Floor 2 - Garage



Dimensions: 28'10" x 24'0"
Area: 666 sq. ft
Counted as living area: No

Heated: No
Finished: No
Enclosed: Yes
Contiguous: Yes
Permitted: Yes
Wet space: No
Addition: No
Conversion: No

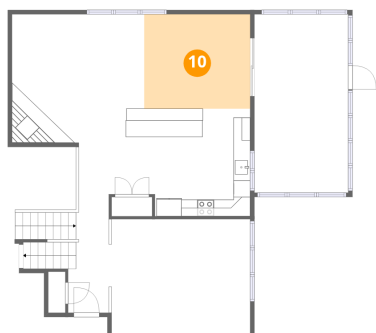
9 Floor 3 - Foyer



Dimensions: 4'10" x 14'1"
Area: 102 sq. ft
Counted as living area: Yes

Heated: Yes
Finished: Yes
Enclosed: Yes
Contiguous: Yes
Permitted: Yes
Wet space: No
Addition: No
Conversion: No

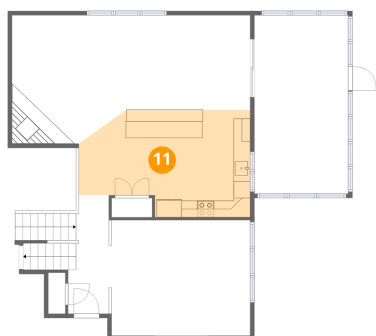
10 Floor 3 - Dining Area



Dimensions: 12'8" x 11'3"
Area: 142 sq. ft
Counted as living area: Yes

Heated: Yes
Finished: Yes
Enclosed: Yes
Contiguous: Yes
Permitted: Yes
Wet space: No
Addition: No
Conversion: No

11 Floor 3 - Kitchen



Dimensions: 20'5" x 12'10"
Area: 227 sq. ft
Counted as living area: Yes

Heated: Yes
Finished: Yes
Enclosed: Yes
Contiguous: Yes
Permitted: Yes
Wet space: No
Addition: No
Conversion: No

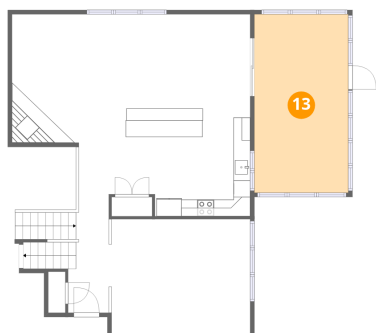
12 Floor 3 - Living Room



Dimensions: 16'10" x 13'9"
Area: 229 sq. ft
Counted as living area: Yes

Heated: Yes
Finished: Yes
Enclosed: Yes
Contiguous: Yes
Permitted: Yes
Wet space: No
Addition: No
Conversion: No

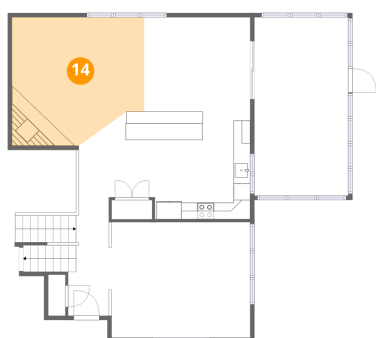
13 Floor 3 - Screened Porch



Dimensions: 11'2" x 21'2"
Area: 238 sq. ft
Counted as living area: No

Heated: No
Finished: No
Enclosed: No
Contiguous: Yes
Permitted: Yes
Wet space: No
Addition: No
Conversion: No

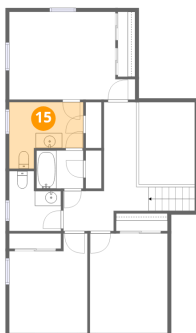
14 Floor 3 - Family Room



Dimensions: 15'9" x 15'4"
Area: 221 sq. ft
Counted as living area: Yes

Heated: Yes
Finished: Yes
Enclosed: Yes
Contiguous: Yes
Permitted: Yes
Wet space: No
Addition: No
Conversion: No

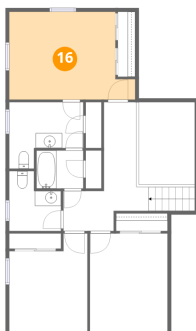
15 Floor 4 - Bath



Dimensions: 9'11" x 8'11"
Area: 70 sq. ft
Counted as living area: Yes

Heated: Yes
Finished: Yes
Enclosed: Yes
Contiguous: Yes
Permitted: Yes
Wet space: Yes
Addition: No
Conversion: No

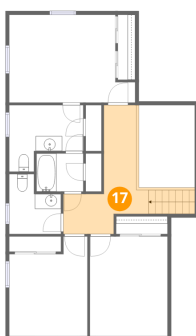
16 Floor 4 - Primary Bedroom



Dimensions: 16'10" x 11'9"
Area: 174 sq. ft
Counted as living area: Yes

Heated: Yes
Finished: Yes
Enclosed: Yes
Contiguous: Yes
Permitted: Yes
Wet space: No
Addition: No
Conversion: No

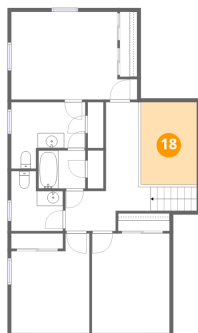
17 Floor 4 - Hall



Dimensions: 11'5" x 17'3"
Area: 127 sq. ft
Counted as living area: Yes

Heated: Yes
Finished: Yes
Enclosed: Yes
Contiguous: Yes
Permitted: Yes
Wet space: No
Addition: No
Conversion: No

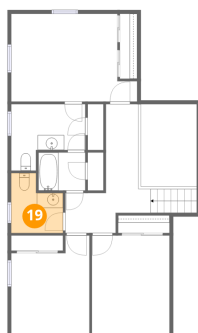
18 Floor 4 - Open To Below



Dimensions: 7'6" x 11'0"
Area: 82 sq. ft
Counted as living area: No

Heated: No
Finished: No
Enclosed: No
Contiguous: Yes
Permitted: No
Wet space: No
Addition: No
Conversion: No

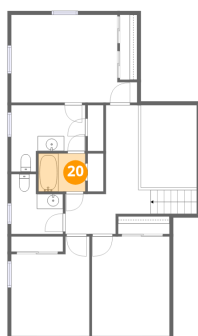
19 Floor 4 - Bath



Dimensions: 6'11" x 8'0"
Area: 46 sq. ft
Counted as living area: Yes

Heated: Yes
Finished: Yes
Enclosed: Yes
Contiguous: Yes
Permitted: Yes
Wet space: Yes
Addition: No
Conversion: No

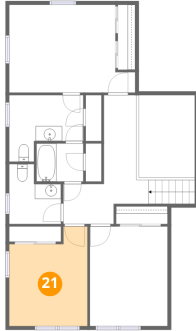
20 Floor 4 - Bath



Dimensions: 6'3" x 5'1"
Area: 32 sq. ft
Counted as living area: Yes

Heated: Yes
Finished: Yes
Enclosed: Yes
Contiguous: Yes
Permitted: Yes
Wet space: Yes
Addition: No
Conversion: No

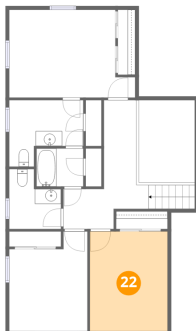
21 Floor 4 - Bedroom



Dimensions: 10'5" x 13'4"
Area: 122 sq. ft
Counted as living area: Yes

Heated: Yes
Finished: Yes
Enclosed: Yes
Contiguous: Yes
Permitted: Yes
Wet space: No
Addition: No
Conversion: No

22 Floor 4 - Bedroom



Dimensions: 10'5" x 13'4"
Area: 138 sq. ft
Counted as living area: Yes

Heated: Yes
Finished: Yes
Enclosed: Yes
Contiguous: Yes
Permitted: Yes
Wet space: No
Addition: No
Conversion: No