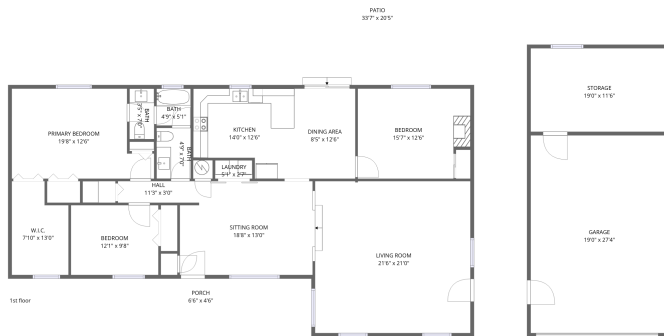


Home data report

9601 Sierra Vista Rd, Longmont, CO, US



Total Area: 1800 sq. ft

1st Floor: 1800 sq. ft

Excluded: Garage 519 sq. ft, Storage 219 sq. ft, Shed 1143 sq. ft, Stable 315 sq. ft, Porch 29 sq. ft, Patio 505 sq. ft, Undefined 7 sq. ft, Walls: 273 sq. ft

Property summary





Room dimensions

Floor 1

Total:1800sqft

Excluded: 2737sqft

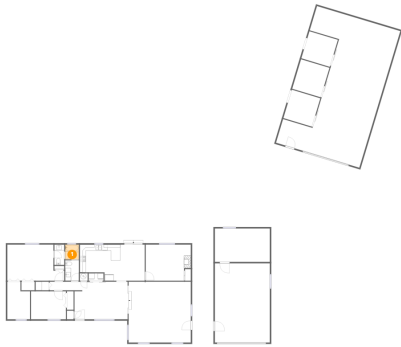
#		Dimensions	sqft	Counted as living area
1	Bath	4'9" x 5'1"	24 sq. ft	Yes
2	Patio	33'7" x 20'5"	505 sq. ft	No
3	Stable	10'3" x 10'2"	105 sq. ft	No
4	Laundry	5'1" x 2'7"	13 sq. ft	Yes
5	Bath	4'9" x 7'0"	33 sq. ft	Yes
6	Hall	11'3" x 3'0"	34 sq. ft	Yes
7	Storage	19'0" x 11'6"	219 sq. ft	No
8	Bedroom	12'1" x 9'8"	117 sq. ft	Yes
9	Living Room	21'6" x 21'0"	452 sq. ft	Yes
10	Dining Area	8'5" x 12'6"	105 sq. ft	Yes
11	Stable	10'3" x 9'9"	100 sq. ft	No

Home data report

9601 Sierra Vista Rd,Longmont,CO,US

#		Dimensions	sqft	Counted as living area
12	Stable	10'3" x 10'8"	110 sq. ft	No
13	Kitchen	14'0" x 12'6"	150 sq. ft	Yes
14	Bath	3'5" x 7'0"	24 sq. ft	Yes
15	Sitting Room	18'8" x 13'0"	233 sq. ft	Yes
16	Bedroom	15'7" x 12'6"	184 sq. ft	Yes
17	W.I.C.	7'10" x 13'0"	91 sq. ft	Yes
18	Primary Bedroom	19'8" x 12'6"	212 sq. ft	Yes
19	Shed	30'2" x 49'3"	1143 sq. ft	No
20	Porch	6'6" x 4'6"	29 sq. ft	No
21	Garage	19'0" x 27'4"	519 sq. ft	No

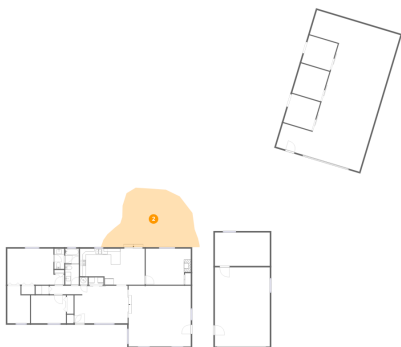
1 Floor 1 - Bath



Dimensions: 4'9" x 5'1"
Area: 24 sq. ft
Counted as living area: Yes

Heated: Yes
Finished: Yes
Enclosed: Yes
Contiguous: Yes
Permitted: Yes
Wet space: Yes
Addition: No
Conversion: No

2 Floor 1 - Patio



Dimensions: 33'7" x 20'5"
Area: 505 sq. ft
Counted as living area: No

Heated: No
Finished: No
Enclosed: No
Contiguous: Yes
Permitted: Yes
Wet space: No
Addition: No
Conversion: No

3 Floor 1 - Stable



Dimensions: 10'3" x 10'2"
Area: 105 sq. ft
Counted as living area: No

Heated: No
Finished: No
Enclosed: No
Contiguous: Yes
Permitted: Yes
Wet space: No
Addition: No
Conversion: No

4 Floor 1 - Laundry



Dimensions: 5'1" x 2'7"
Area: 13 sq. ft
Counted as living area: Yes

Heated: Yes
Finished: Yes
Enclosed: Yes
Contiguous: Yes
Permitted: Yes
Wet space: No
Addition: No
Conversion: No

5 Floor 1 - Bath



Dimensions: 4'9" x 7'0"
Area: 33 sq. ft
Counted as living area: Yes

Heated: Yes
Finished: Yes
Enclosed: Yes
Contiguous: Yes
Permitted: Yes
Wet space: Yes
Addition: No
Conversion: No

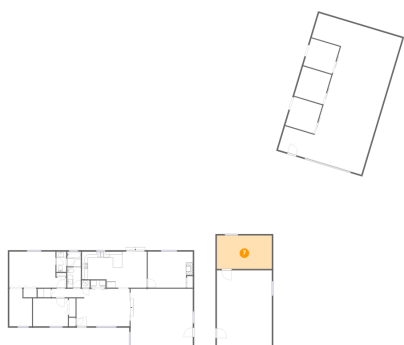
6 Floor 1 - Hall



Dimensions: 11'3" x 3'0"
Area: 34 sq. ft
Counted as living area: Yes

Heated: Yes
Finished: Yes
Enclosed: Yes
Contiguous: Yes
Permitted: Yes
Wet space: No
Addition: No
Conversion: No

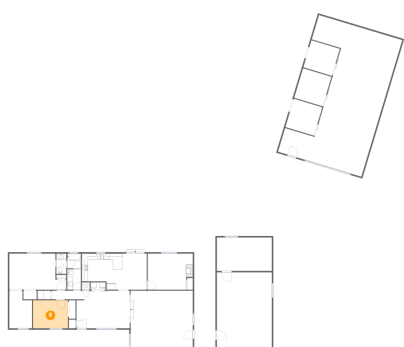
7 Floor 1 - Storage



Dimensions: 19'0" x 11'6"
Area: 219 sq. ft
Counted as living area: No

Heated: No
Finished: No
Enclosed: No
Contiguous: Yes
Permitted: Yes
Wet space: No
Addition: No
Conversion: No

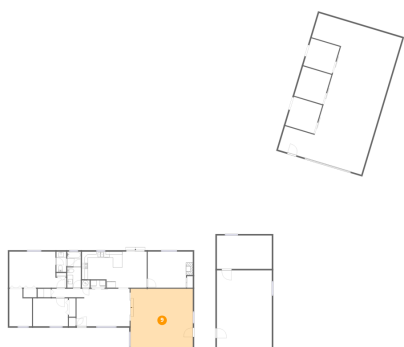
8 Floor 1 - Bedroom



Dimensions: 12'1" x 9'8"
Area: 117 sq. ft
Counted as living area: Yes

Heated: Yes
Finished: Yes
Enclosed: Yes
Contiguous: Yes
Permitted: Yes
Wet space: No
Addition: No
Conversion: No

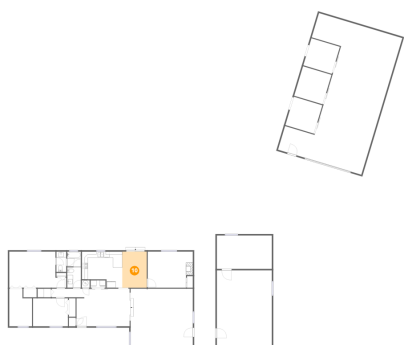
9 Floor 1 - Living Room



Dimensions: 21'6" x 21'0"
Area: 452 sq. ft
Counted as living area: Yes

Heated: Yes
Finished: Yes
Enclosed: Yes
Contiguous: Yes
Permitted: Yes
Wet space: No
Addition: No
Conversion: No

10 Floor 1 - Dining Area



Dimensions: 8'5" x 12'6"
Area: 105 sq. ft
Counted as living area: Yes

Heated: Yes
Finished: Yes
Enclosed: Yes
Contiguous: Yes
Permitted: Yes
Wet space: No
Addition: No
Conversion: No

11 Floor 1 - Stable



Dimensions: 10'3" x 9'9"
Area: 100 sq. ft
Counted as living area: No

Heated: No
Finished: No
Enclosed: No
Contiguous: Yes
Permitted: Yes
Wet space: No
Addition: No
Conversion: No

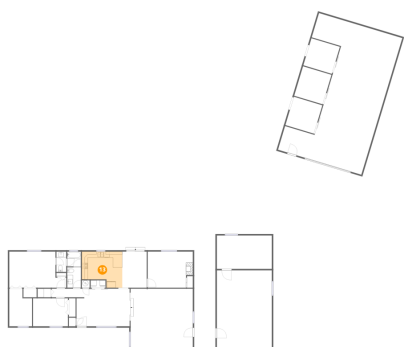
12 Floor 1 - Stable



Dimensions: 10'3" x 10'8"
Area: 110 sq. ft
Counted as living area: No

Heated: No
Finished: No
Enclosed: No
Contiguous: Yes
Permitted: Yes
Wet space: No
Addition: No
Conversion: No

13 Floor 1 - Kitchen



Dimensions: 14'0" x 12'6"
Area: 150 sq. ft
Counted as living area: Yes

Heated: Yes
Finished: Yes
Enclosed: Yes
Contiguous: Yes
Permitted: Yes
Wet space: No
Addition: No
Conversion: No

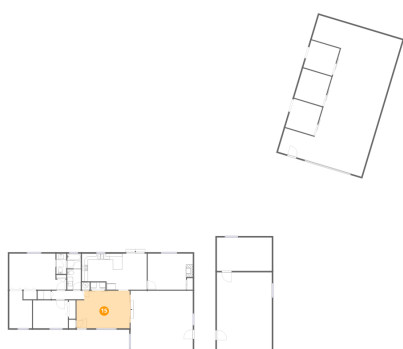
14 Floor 1 - Bath



Dimensions: 3'5" x 7'0"
Area: 24 sq. ft
Counted as living area: Yes

Heated: Yes
Finished: Yes
Enclosed: Yes
Contiguous: Yes
Permitted: Yes
Wet space: No
Addition: No
Conversion: No

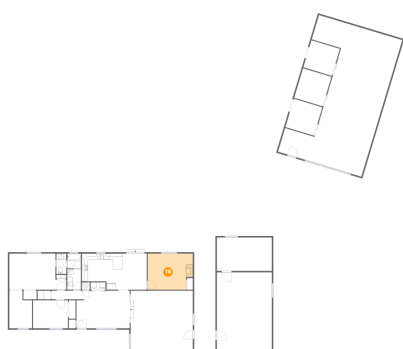
15 Floor 1 - Sitting Room



Dimensions: 18'8" x 13'0"
Area: 233 sq. ft
Counted as living area: Yes

Heated: Yes
Finished: Yes
Enclosed: Yes
Contiguous: Yes
Permitted: Yes
Wet space: No
Addition: No
Conversion: No

16 Floor 1 - Bedroom



Dimensions: 15'7" x 12'6"
Area: 184 sq. ft
Counted as living area: Yes

Heated: Yes
Finished: Yes
Enclosed: Yes
Contiguous: Yes
Permitted: Yes
Wet space: No
Addition: No
Conversion: No

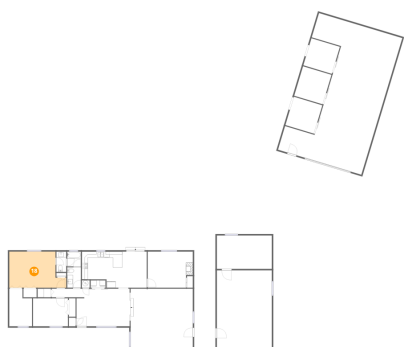
17 Floor 1 - W.I.C.



Dimensions: 7'10" x 13'0"
Area: 91 sq. ft
Counted as living area: Yes

Heated: Yes
Finished: Yes
Enclosed: Yes
Contiguous: Yes
Permitted: Yes
Wet space: No
Addition: No
Conversion: No

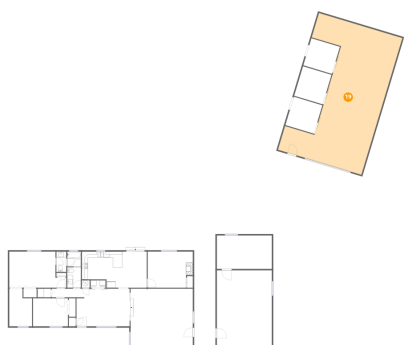
18 Floor 1 - Primary Bedroom



Dimensions: 19'8" x 12'6"
Area: 212 sq. ft
Counted as living area: Yes

Heated: Yes
Finished: Yes
Enclosed: Yes
Contiguous: Yes
Permitted: Yes
Wet space: No
Addition: No
Conversion: No

19 Floor 1 - Shed



Dimensions: 30'2" x 49'3"
Area: 1143 sq. ft
Counted as living area: No

Heated: No
Finished: No
Enclosed: No
Contiguous: Yes
Permitted: Yes
Wet space: No
Addition: No
Conversion: No

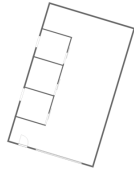
20 Floor 1 - Porch



Dimensions: 6'6" x 4'6"
Area: 29 sq. ft
Counted as living area: No

Heated: No
Finished: No
Enclosed: No
Contiguous: Yes
Permitted: Yes
Wet space: No
Addition: No
Conversion: No

21 Floor 1 - Garage



Dimensions: 19'0" x 27'4"
Area: 519 sq. ft
Counted as living area: No

Heated: No
Finished: No
Enclosed: Yes
Contiguous: Yes
Permitted: Yes
Wet space: No
Addition: No
Conversion: No

