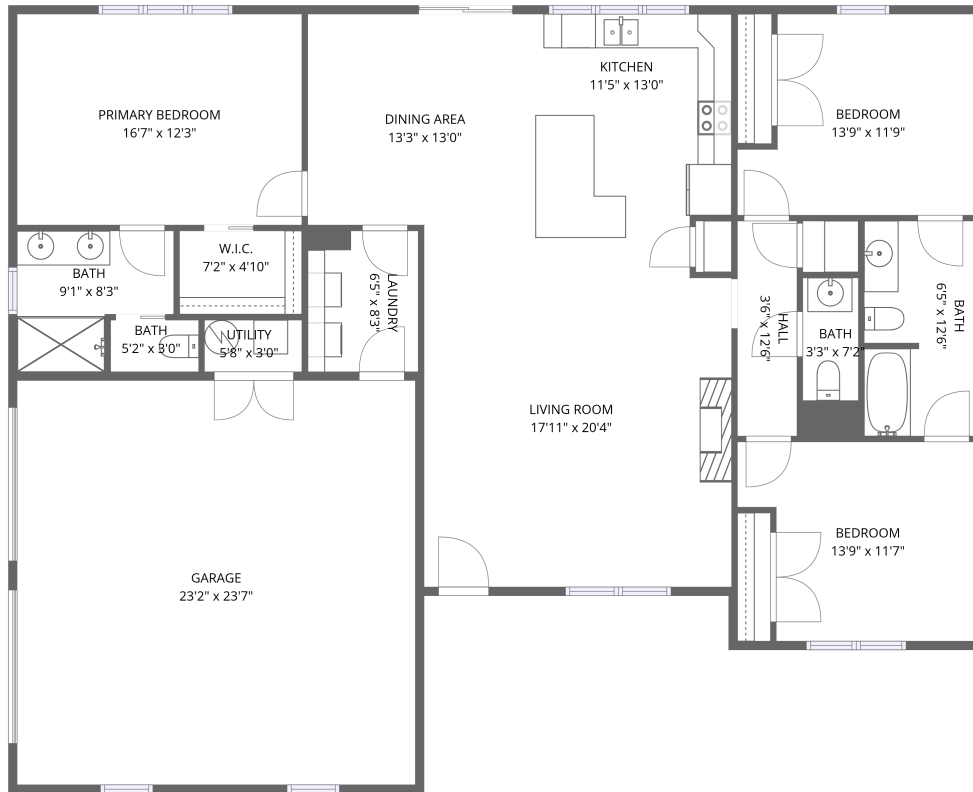


Home data report

915 Morewood Road, Westlake Corner, Hardy, Franklin County,
Virginia, United States, 24101



1st floor

Total Area: 1588 sq. ft

1st Floor: 1588 sq. ft

Excluded: Garage 546 sq. ft, Utility 17 sq. ft, Walls: 123 sq. ft

Property summary



Home data report

**915 Morewood Road, Westlake Corner, Hardy, Franklin County,
Virginia, United States, 24101**



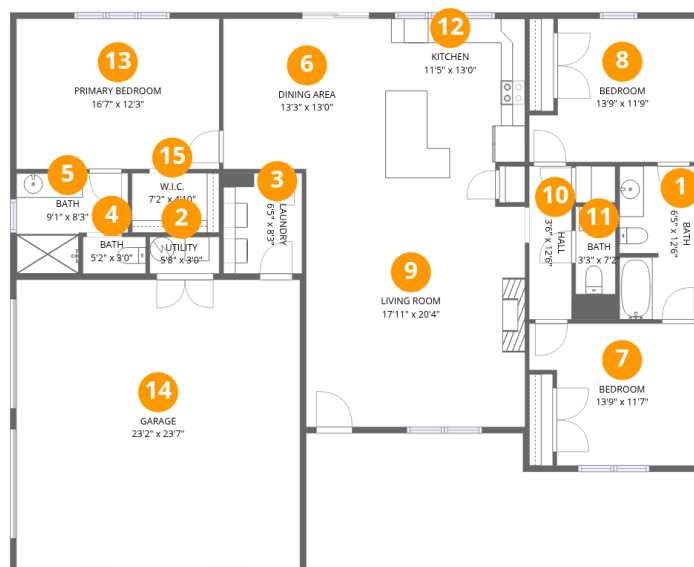
1
Half baths



1
Garages

Home data report

915 Morewood Road, Westlake Corner, Hardy, Franklin County, Virginia, United States, 24101



Room dimensions

Floor 1

Total:1588sqft Excluded: 563sqft

#		Dimensions	sqft	Counted as living area
1	Bath	6'5" x 12'6"	79 sq. ft	Yes
2	Utility	5'8" x 3'0"	17 sq. ft	No
3	Laundry	6'5" x 8'3"	53 sq. ft	Yes
4	Bath	5'2" x 3'0"	15 sq. ft	Yes
5	Bath	9'1" x 8'3"	61 sq. ft	Yes
6	Dining Area	13'3" x 13'0"	168 sq. ft	Yes
7	Bedroom	13'9" x 11'7"	142 sq. ft	Yes
8	Bedroom	13'9" x 11'9"	143 sq. ft	Yes
9	Living Room	17'11" x 20'4"	359 sq. ft	Yes
10	Hall	3'6" x 12'6"	43 sq. ft	Yes
11	Bath	3'3" x 7'2"	23 sq. ft	Yes

Home data report

**915 Morewood Road, Westlake Corner, Hardy, Franklin County,
Virginia, United States, 24101**

#		Dimensions	sqft	Counted as living area
12	Kitchen	11'5" x 13'0"	145 sq. ft	Yes
13	Primary Bedroom	16'7" x 12'3"	204 sq. ft	Yes
14	Garage	23'2" x 23'7"	546 sq. ft	No
15	W.I.C.	7'2" x 4'10"	35 sq. ft	Yes

915 Morewood Road, Westlake Corner, Hardy, Franklin County,
Virginia, United States, 24101

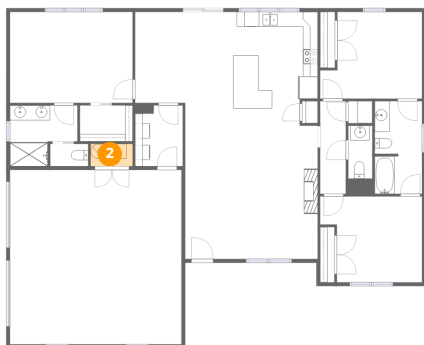
1 Floor 1 - Bath



Dimensions: 6'5" x 12'6"
Area: 79 sq. ft
Counted as living area: Yes

Heated: Yes
Finished: Yes
Enclosed: Yes
Contiguous: Yes
Permitted: Yes
Wet space: Yes
Addition: No
Conversion: No

2 Floor 1 - Utility

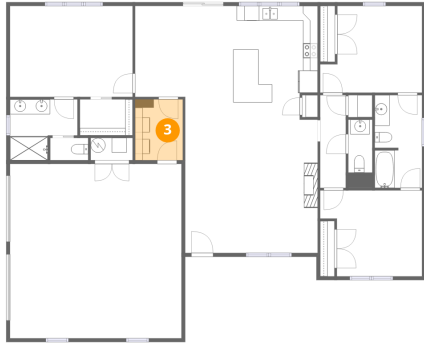


Dimensions: 5'8" x 3'0"
Area: 17 sq. ft
Counted as living area: No

Heated: Yes
Finished: No
Enclosed: Yes
Contiguous: Yes
Permitted: Yes
Wet space: No
Addition: No
Conversion: No

915 Morewood Road, Westlake Corner, Hardy, Franklin County, Virginia, United States, 24101

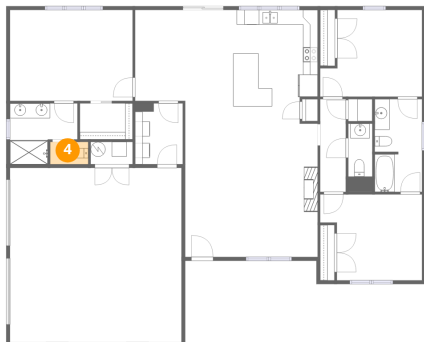
3 Floor 1 - Laundry



Dimensions: 6'5" x 8'3"
Area: 53 sq. ft
Counted as living area: Yes

Heated: Yes
Finished: Yes
Enclosed: Yes
Contiguous: Yes
Permitted: Yes
Wet space: No
Addition: No
Conversion: No

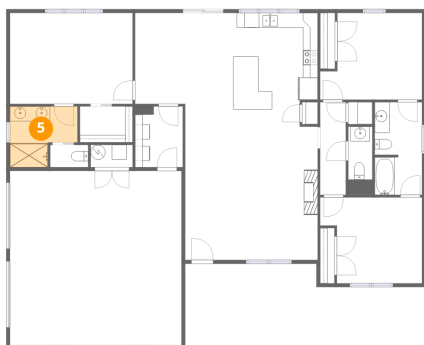
4 Floor 1 - Bath



Dimensions: 5'2" x 3'0"
Area: 15 sq. ft
Counted as living area: Yes

Heated: Yes
Finished: Yes
Enclosed: Yes
Contiguous: Yes
Permitted: Yes
Wet space: Yes
Addition: No
Conversion: No

5 Floor 1 - Bath

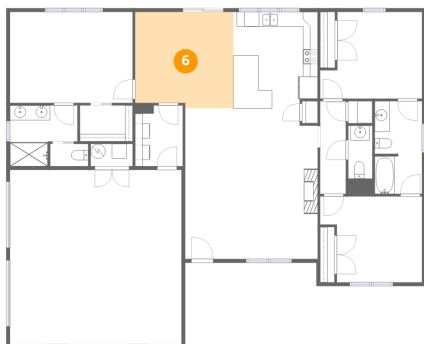


Dimensions: 9'1" x 8'3"
Area: 61 sq. ft
Counted as living area: Yes

Heated: Yes
Finished: Yes
Enclosed: Yes
Contiguous: Yes
Permitted: Yes
Wet space: Yes
Addition: No
Conversion: No

915 Morewood Road, Westlake Corner, Hardy, Franklin County, Virginia, United States, 24101

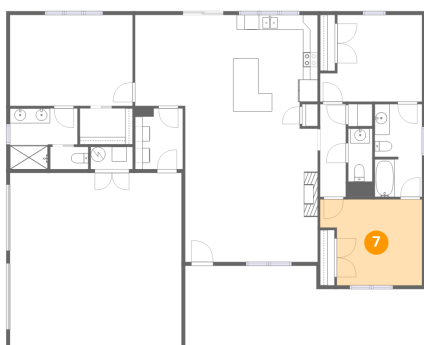
6 Floor 1 - Dining Area



Dimensions: 13'3" x 13'0"
Area: 168 sq. ft
Counted as living area: Yes

Heated: Yes
Finished: Yes
Enclosed: Yes
Contiguous: Yes
Permitted: Yes
Wet space: No
Addition: No
Conversion: No

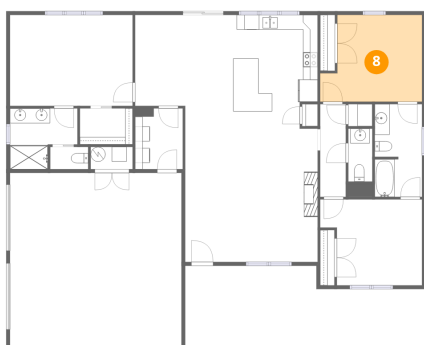
7 Floor 1 - Bedroom



Dimensions: 13'9" x 11'7"
Area: 142 sq. ft
Counted as living area: Yes

Heated: Yes
Finished: Yes
Enclosed: Yes
Contiguous: Yes
Permitted: Yes
Wet space: No
Addition: No
Conversion: No

8 Floor 1 - Bedroom

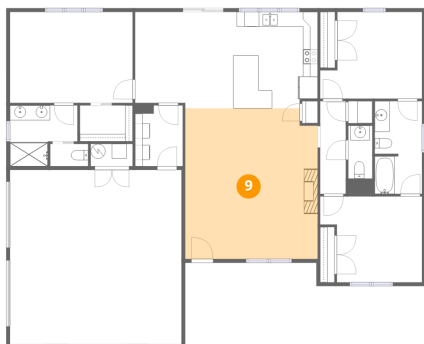


Dimensions: 13'9" x 11'9"
Area: 143 sq. ft
Counted as living area: Yes

Heated: Yes
Finished: Yes
Enclosed: Yes
Contiguous: Yes
Permitted: Yes
Wet space: No
Addition: No
Conversion: No

915 Morewood Road, Westlake Corner, Hardy, Franklin County, Virginia, United States, 24101

9 Floor 1 - Living Room



Dimensions: 17'11" x 20'4"
Area: 359 sq. ft
Counted as living area: Yes

Heated: Yes
Finished: Yes
Enclosed: Yes
Contiguous: Yes
Permitted: Yes
Wet space: No
Addition: No
Conversion: No

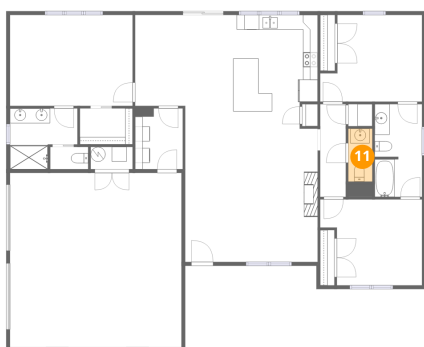
10 Floor 1 - Hall



Dimensions: 3'6" x 12'6"
Area: 43 sq. ft
Counted as living area: Yes

Heated: Yes
Finished: Yes
Enclosed: Yes
Contiguous: Yes
Permitted: Yes
Wet space: No
Addition: No
Conversion: No

11 Floor 1 - Bath

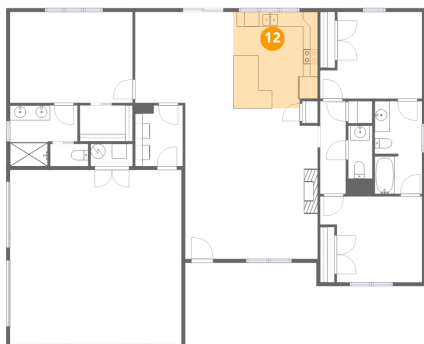


Dimensions: 3'3" x 7'2"
Area: 23 sq. ft
Counted as living area: Yes

Heated: Yes
Finished: Yes
Enclosed: Yes
Contiguous: Yes
Permitted: Yes
Wet space: Yes
Addition: No
Conversion: No

915 Morewood Road, Westlake Corner, Hardy, Franklin County, Virginia, United States, 24101

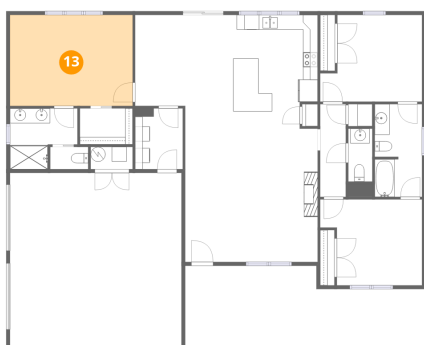
12 Floor 1 - Kitchen



Dimensions: 11'5" x 13'0"
Area: 145 sq. ft
Counted as living area: Yes

Heated: Yes
Finished: Yes
Enclosed: Yes
Contiguous: Yes
Permitted: Yes
Wet space: No
Addition: No
Conversion: No

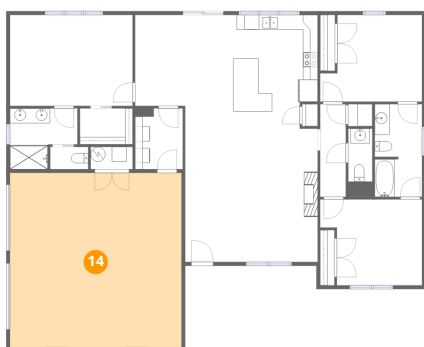
13 Floor 1 - Primary Bedroom



Dimensions: 16'7" x 12'3"
Area: 204 sq. ft
Counted as living area: Yes

Heated: Yes
Finished: Yes
Enclosed: Yes
Contiguous: Yes
Permitted: Yes
Wet space: No
Addition: No
Conversion: No

14 Floor 1 - Garage

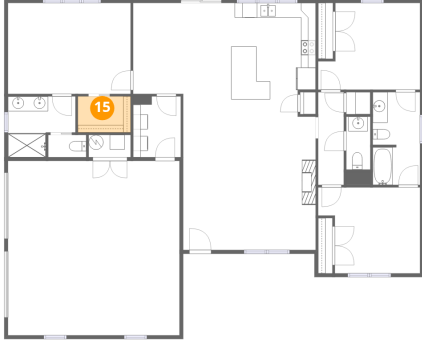


Dimensions: 23'2" x 23'7"
Area: 546 sq. ft
Counted as living area: No

Heated: No
Finished: No
Enclosed: Yes
Contiguous: Yes
Permitted: Yes
Wet space: No
Addition: No
Conversion: No

915 Morewood Road, Westlake Corner, Hardy, Franklin County,
Virginia, United States, 24101

15 Floor 1 - W.I.C.



Dimensions: 7'2" x 4'10"
Area: 35 sq. ft
Counted as living area: Yes

Heated: Yes
Finished: Yes
Enclosed: Yes
Contiguous: Yes
Permitted: Yes
Wet space: No
Addition: No
Conversion: No