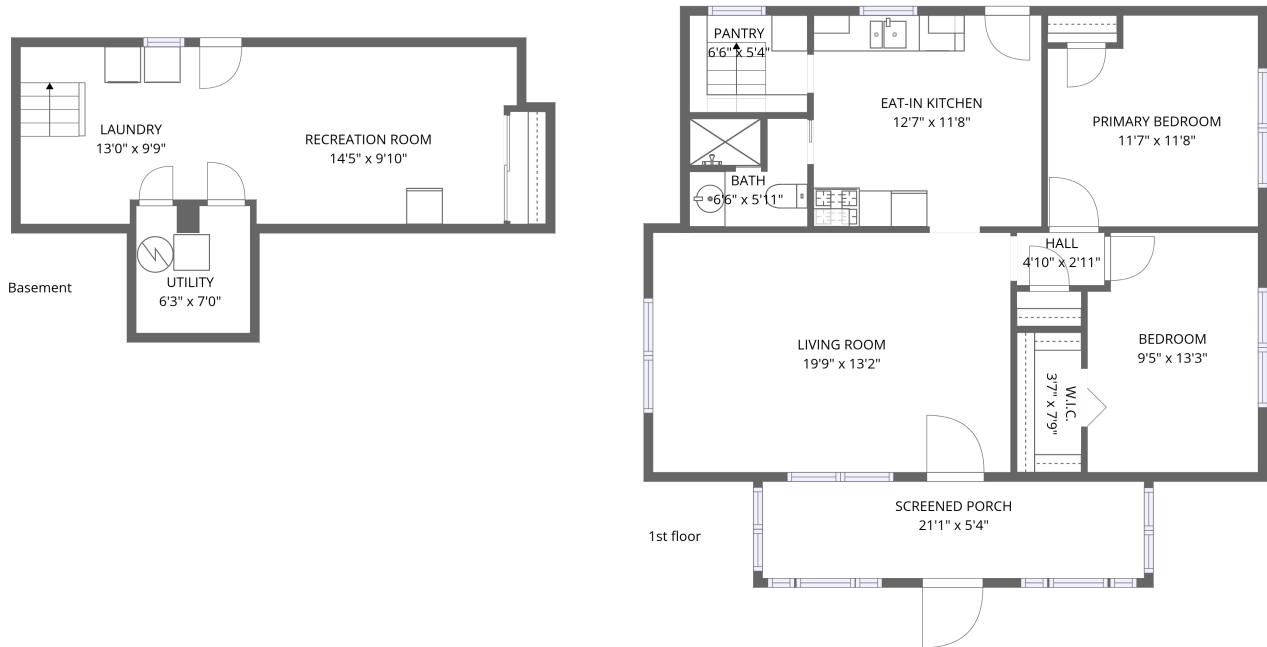


Home data report

821 6th Ave, Belle Fourche, SD, US




**Total Area: 1137 sq. ft**

Basement: 317 sq. ft, 1st Floor: 820 sq. ft

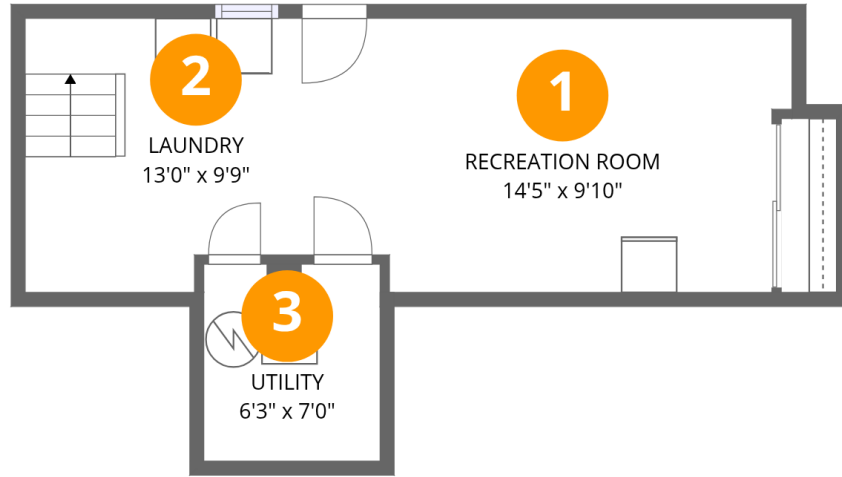
Excluded: Screened porch 113 sq. ft, Walls: 122 sq. ft

## Property summary

 **2** Floors

 **2** Bedrooms

 **1** Bathrooms

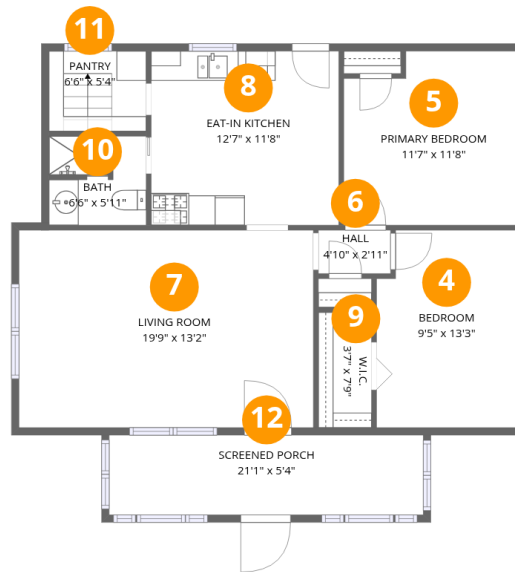


## Room dimensions

Floor 1 Below grade

Total:317sqft Excluded: 0sqft

#		Dimensions	sqft	Counted as living area
1	Recreation Room	14'5" x 9'10"	136 sq. ft	Yes
2	Laundry	13'0" x 9'9"	118 sq. ft	Yes
3	Utility	6'3" x 7'0"	44 sq. ft	Yes



## Room dimensions

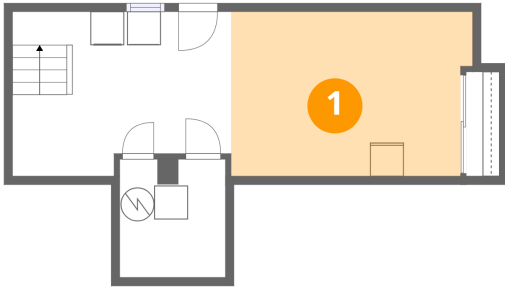
Floor 2

Total:820sqft

Excluded: 113sqft

#		Dimensions	sqft	Counted as living area
4	Bedroom	9'5" x 13'3"	121 sq. ft	Yes
5	Primary Bedroom	11'7" x 11'8"	128 sq. ft	Yes
6	Hall	4'10" x 2'11"	14 sq. ft	Yes
7	Living Room	19'9" x 13'2"	262 sq. ft	Yes
8	Eat-in Kitchen	12'7" x 11'8"	147 sq. ft	Yes
9	W.I.C.	3'7" x 7'9"	28 sq. ft	Yes
10	Bath	6'6" x 5'11"	37 sq. ft	Yes
11	Pantry	6'6" x 5'4"	35 sq. ft	Yes
12	Screened Porch	21'1" x 5'4"	113 sq. ft	No

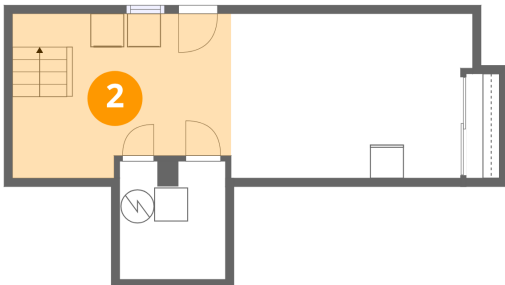
## 1 Floor 1 - Recreation Room



Dimensions: 14'5" x 9'10"  
Area: 136 sq. ft  
Counted as living area: Yes

Heated: Yes  
Finished: Yes  
Enclosed: Yes  
Contiguous: Yes  
Permitted: Yes  
Wet space: No  
Addition: No  
Conversion: No

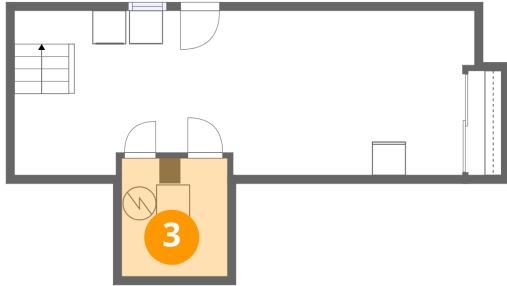
## 2 Floor 1 - Laundry



Dimensions: 13'0" x 9'9"  
Area: 118 sq. ft  
Counted as living area: Yes

Heated: Yes  
Finished: Yes  
Enclosed: Yes  
Contiguous: Yes  
Permitted: Yes  
Wet space: No  
Addition: No  
Conversion: No

### 3 Floor 1 - Utility



Dimensions: 6'3" x 7'0"  
Area: 44 sq. ft  
Counted as living area: Yes

Heated: Yes  
Finished: Yes  
Enclosed: Yes  
Contiguous: Yes  
Permitted: Yes  
Wet space: No  
Addition: No  
Conversion: No

### 4 Floor 2 - Bedroom



Dimensions: 9'5" x 13'3"  
Area: 121 sq. ft  
Counted as living area: Yes

Heated: Yes  
Finished: Yes  
Enclosed: Yes  
Contiguous: Yes  
Permitted: Yes  
Wet space: No  
Addition: No  
Conversion: No

### 5 Floor 2 - Primary Bedroom



Dimensions: 11'7" x 11'8"  
Area: 128 sq. ft  
Counted as living area: Yes

Heated: Yes  
Finished: Yes  
Enclosed: Yes  
Contiguous: Yes  
Permitted: Yes  
Wet space: No  
Addition: No  
Conversion: No

### 6 Floor 2 - Hall



Dimensions: 4'10" x 2'11"  
Area: 14 sq. ft  
Counted as living area: Yes

Heated: Yes  
Finished: Yes  
Enclosed: Yes  
Contiguous: Yes  
Permitted: Yes  
Wet space: No  
Addition: No  
Conversion: No

### 7 Floor 2 - Living Room



Dimensions: 19'9" x 13'2"  
Area: 262 sq. ft  
Counted as living area: Yes

Heated: Yes  
Finished: Yes  
Enclosed: Yes  
Contiguous: Yes  
Permitted: Yes  
Wet space: No  
Addition: No  
Conversion: No

### 8 Floor 2 - Eat-in Kitchen



Dimensions: 12'7" x 11'8"  
Area: 147 sq. ft  
Counted as living area: Yes

Heated: Yes  
Finished: Yes  
Enclosed: Yes  
Contiguous: Yes  
Permitted: Yes  
Wet space: No  
Addition: No  
Conversion: No

**9** Floor 2 - W.I.C.



Dimensions: 3'7" x 7'9"  
Area: 28 sq. ft  
Counted as living area: Yes

Heated: Yes  
Finished: Yes  
Enclosed: Yes  
Contiguous: Yes  
Permitted: Yes  
Wet space: No  
Addition: No  
Conversion: No

**10** Floor 2 - Bath



Dimensions: 6'6" x 5'11"  
Area: 37 sq. ft  
Counted as living area: Yes

Heated: Yes  
Finished: Yes  
Enclosed: Yes  
Contiguous: Yes  
Permitted: Yes  
Wet space: Yes  
Addition: No  
Conversion: No

**11** Floor 2 - Pantry



Dimensions: 6'6" x 5'4"  
Area: 35 sq. ft  
Counted as living area: Yes

Heated: Yes  
Finished: Yes  
Enclosed: Yes  
Contiguous: Yes  
Permitted: Yes  
Wet space: No  
Addition: No  
Conversion: No

**12** Floor 2 - Screened Porch

---



Dimensions: 21'1" x 5'4"  
Area: 113 sq. ft  
Counted as living area: No

Heated: No  
Finished: No  
Enclosed: No  
Contiguous: Yes  
Permitted: Yes  
Wet space: No  
Addition: No  
Conversion: No