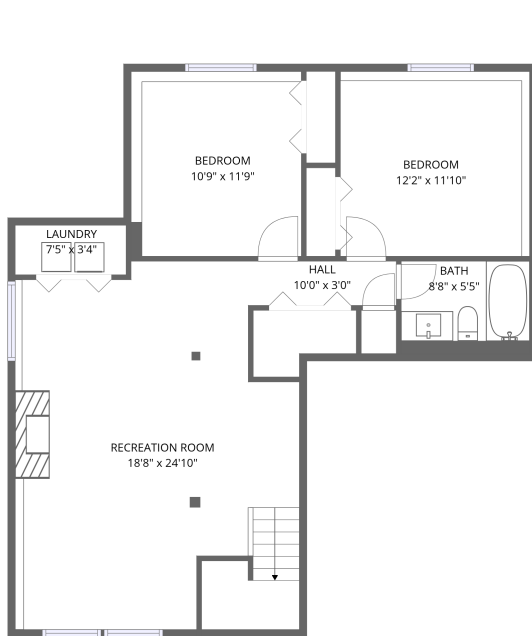


Home data report

1013 Kremmling Ln, Fort Collins, CO, US



1st floor



2nd floor

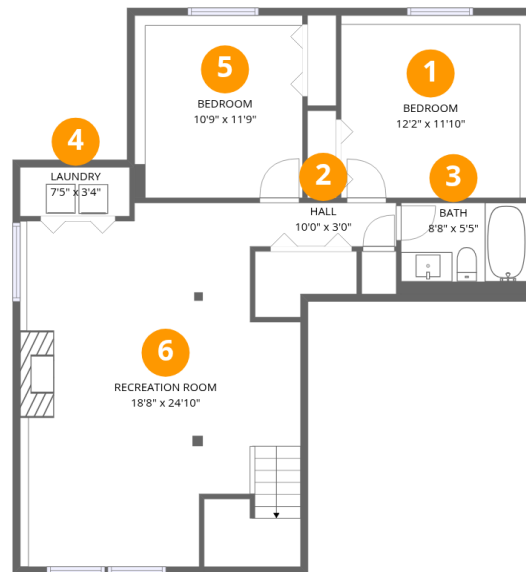
Total Area: 1890 sq. ft

1st Floor: 935 sq. ft, 2nd Floor: 955 sq. ft

Excluded: Garage 351 sq. ft, Deck 162 sq. ft, Walls: 169 sq. ft

Property summary





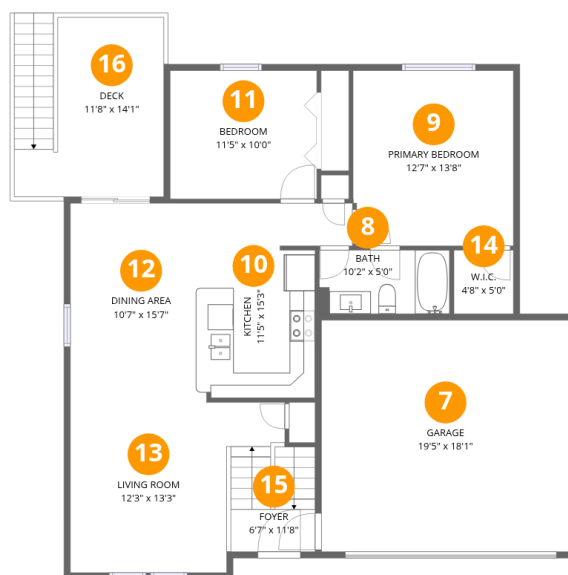
Room dimensions

Floor 1

Total: 935 sqft

Excluded: 0 sqft

#		Dimensions	sqft	Counted as living area
1	Bedroom	12'2" x 11'10"	144 sq. ft	Yes
2	Hall	10'0" x 3'0"	30 sq. ft	Yes
3	Bath	8'8" x 5'5"	47 sq. ft	Yes
4	Laundry	7'5" x 3'4"	25 sq. ft	Yes
5	Bedroom	10'9" x 11'9"	126 sq. ft	Yes
6	Recreation Room	18'8" x 24'10"	463 sq. ft	Yes



Room dimensions

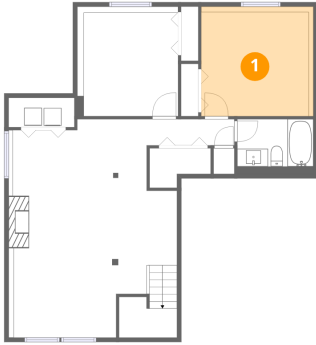
Floor 2

Total: 955 sqft

Excluded: 513 sqft

#		Dimensions	sqft	Counted as living area
7	Garage	19'5" x 18'1"	350 sq. ft	No
8	Bath	10'2" x 5'0"	51 sq. ft	Yes
9	Primary Bedroom	12'7" x 13'8"	172 sq. ft	Yes
10	Kitchen	11'5" x 15'3"	174 sq. ft	Yes
11	Bedroom	11'5" x 10'0"	115 sq. ft	Yes
12	Dining Area	10'7" x 15'7"	165 sq. ft	Yes
13	Living Room	12'3" x 13'3"	162 sq. ft	Yes
14	W.I.C.	4'8" x 5'0"	23 sq. ft	Yes
15	Foyer	6'7" x 11'8"	76 sq. ft	Yes
16	Deck	11'8" x 14'1"	165 sq. ft	No

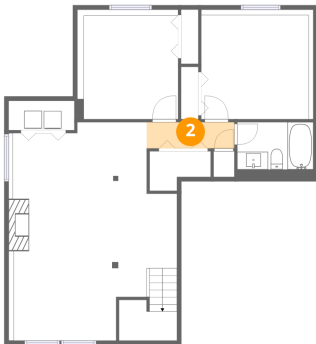
1 Floor 1 - Bedroom



Dimensions: 12'2" x 11'10"
Area: 144 sq. ft
Counted as living area: Yes

Heated: Yes
Finished: Yes
Enclosed: Yes
Contiguous: Yes
Permitted: Yes
Wet space: No
Addition: No
Conversion: No

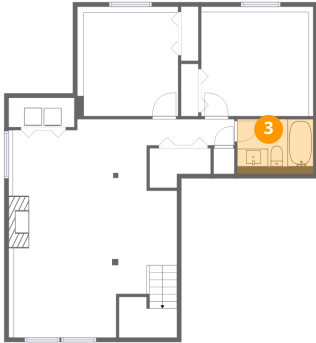
2 Floor 1 - Hall



Dimensions: 10'0" x 3'0"
Area: 30 sq. ft
Counted as living area: Yes

Heated: Yes
Finished: Yes
Enclosed: Yes
Contiguous: Yes
Permitted: Yes
Wet space: No
Addition: No
Conversion: No

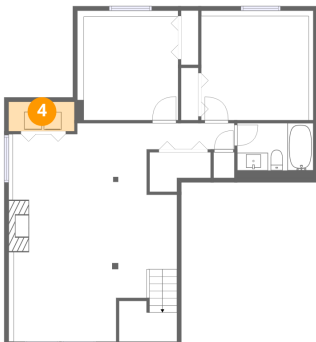
3 Floor 1 - Bath



Dimensions: 8'8" x 5'5"
Area: 47 sq. ft
Counted as living area: Yes

Heated: Yes
Finished: Yes
Enclosed: Yes
Contiguous: Yes
Permitted: Yes
Wet space: Yes
Addition: No
Conversion: No

4 Floor 1 - Laundry



Dimensions: 7'5" x 3'4"
Area: 25 sq. ft
Counted as living area: Yes

Heated: Yes
Finished: Yes
Enclosed: Yes
Contiguous: Yes
Permitted: Yes
Wet space: No
Addition: No
Conversion: No

5 Floor 1 - Bedroom



Dimensions: 10'9" x 11'9"
Area: 126 sq. ft
Counted as living area: Yes

Heated: Yes
Finished: Yes
Enclosed: Yes
Contiguous: Yes
Permitted: Yes
Wet space: No
Addition: No
Conversion: No

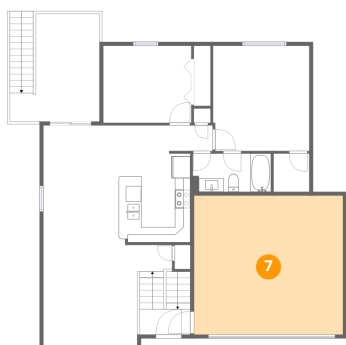
6 Floor 1 - Recreation Room



Dimensions: 18'8" x 24'10"
Area: 463 sq. ft
Counted as living area: Yes

Heated: Yes
Finished: Yes
Enclosed: Yes
Contiguous: Yes
Permitted: Yes
Wet space: No
Addition: No
Conversion: No

7 Floor 2 - Garage



Dimensions: 19'5" x 18'1"
Area: 350 sq. ft
Counted as living area: No

Heated: No
Finished: No
Enclosed: Yes
Contiguous: Yes
Permitted: Yes
Wet space: No
Addition: No
Conversion: No

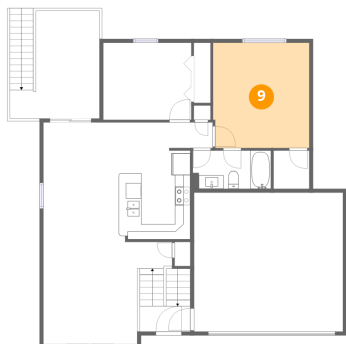
8 Floor 2 - Bath



Dimensions: 10'2" x 5'0"
Area: 51 sq. ft
Counted as living area: Yes

Heated: Yes
Finished: Yes
Enclosed: Yes
Contiguous: Yes
Permitted: Yes
Wet space: Yes
Addition: No
Conversion: No

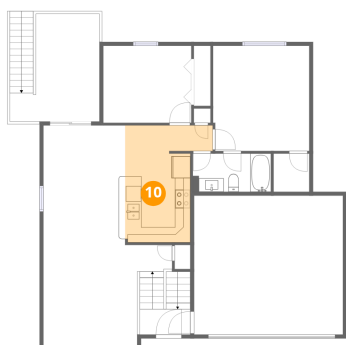
9 Floor 2 - Primary Bedroom



Dimensions: 12'7" x 13'8"
Area: 172 sq. ft
Counted as living area: Yes

Heated: Yes
Finished: Yes
Enclosed: Yes
Contiguous: Yes
Permitted: Yes
Wet space: No
Addition: No
Conversion: No

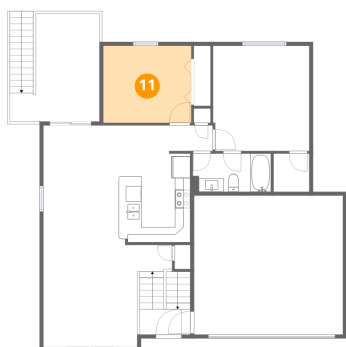
10 Floor 2 - Kitchen



Dimensions: 11'5" x 15'3"
Area: 174 sq. ft
Counted as living area: Yes

Heated: Yes
Finished: Yes
Enclosed: Yes
Contiguous: Yes
Permitted: Yes
Wet space: No
Addition: No
Conversion: No

11 Floor 2 - Bedroom



Dimensions: 11'5" x 10'0"
Area: 115 sq. ft
Counted as living area: Yes

Heated: Yes
Finished: Yes
Enclosed: Yes
Contiguous: Yes
Permitted: Yes
Wet space: No
Addition: No
Conversion: No

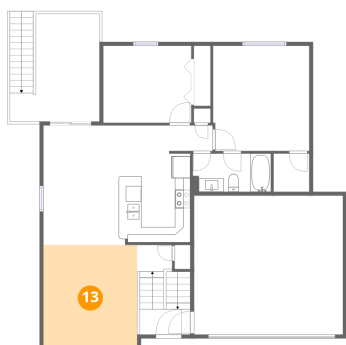
12 Floor 2 - Dining Area



Dimensions: 10'7" x 15'7"
Area: 165 sq. ft
Counted as living area: Yes

Heated: Yes
Finished: Yes
Enclosed: Yes
Contiguous: Yes
Permitted: Yes
Wet space: No
Addition: No
Conversion: No

13 Floor 2 - Living Room



Dimensions: 12'3" x 13'3"
Area: 162 sq. ft
Counted as living area: Yes

Heated: Yes
Finished: Yes
Enclosed: Yes
Contiguous: Yes
Permitted: Yes
Wet space: No
Addition: No
Conversion: No

14 Floor 2 - W.I.C.



Dimensions: 4'8" x 5'0"
Area: 23 sq. ft
Counted as living area: Yes

Heated: Yes
Finished: Yes
Enclosed: Yes
Contiguous: Yes
Permitted: Yes
Wet space: No
Addition: No
Conversion: No

15 Floor 2 - Foyer



Dimensions: 6'7" x 11'8"
Area: 76 sq. ft
Counted as living area: Yes

Heated: Yes
Finished: Yes
Enclosed: Yes
Contiguous: Yes
Permitted: Yes
Wet space: No
Addition: No
Conversion: No

16 Floor 2 - Deck



Dimensions: 11'8" x 14'1"
Area: 165 sq. ft
Counted as living area: No

Heated: No
Finished: No
Enclosed: No
Contiguous: Yes
Permitted: Yes
Wet space: No
Addition: No
Conversion: No