

Home report

19264 Koslowski Square, Lansdowne, Loudoun County, Virginia,
United States, 20176



Total Area: 2312 sq. ft

Below Ground: 116 sq. ft, Floor 2: 1098 sq. ft, Floor 3: 1098 sq. ft

Excluded: Porch 33 sq. ft, Garage 183 sq. ft, Balcony 52 sq. ft, Walls: 170 sq. ft

Property summary

 **3** Floors

 **3** Bedrooms

 **2** Bathrooms

Home report

**19264 Koslowski Square, Lansdowne, Loudoun County, Virginia,
United States, 20176**



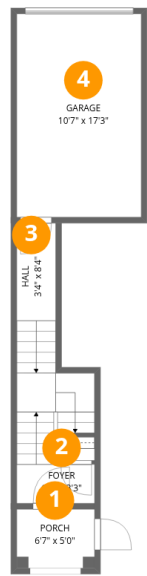
1
Half baths



1
Garages

Home report

19264 Koslowski Square, Lansdowne, Loudoun County, Virginia,
United States, 20176



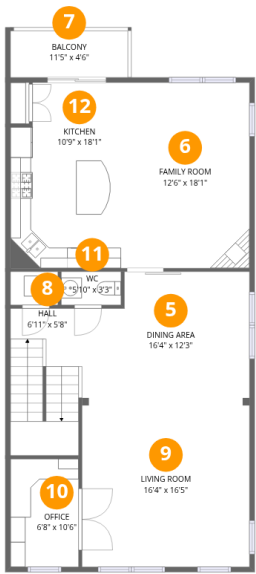
Room dimensions

Floor 1 Below ground Total:116sqft Excluded: 216sqft

#		Max Dimensions	sqft	Included
1	Porch	6'7" x 5'0"	33 sq. ft	No
2	Foyer	6'7" x 3'3"	22 sq. ft	Yes
3	Hall	3'4" x 8'4"	84 sq. ft	Yes
4	Garage	10'7" x 17'3"	183 sq. ft	No

Home report

19264 Koslowski Square, Lansdowne, Loudoun County, Virginia,
United States, 20176



Room dimensions

Floor 2

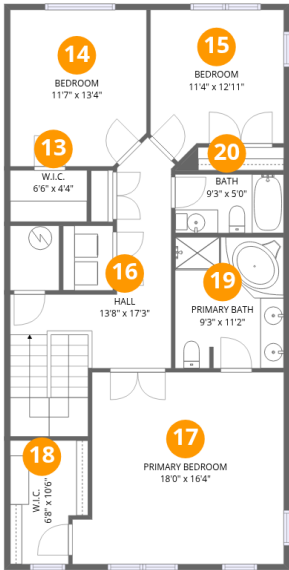
Total:1098sqft

Excluded: 52sqft

#		Max Dimensions	sqft	Included
5	Dining Area	16'4" x 12'3"	186 sq. ft	Yes
6	Family Room	12'6" x 18'1"	227 sq. ft	Yes
7	Balcony	11'5" x 4'6"	52 sq. ft	No
8	Hall	6'11" x 5'8"	98 sq. ft	Yes
9	Living Room	16'4" x 16'5"	268 sq. ft	Yes
10	Office	6'8" x 10'6"	70 sq. ft	Yes
11	WC	5'10" x 3'3"	19 sq. ft	Yes
12	Kitchen	10'9" x 18'1"	185 sq. ft	Yes

Home report

19264 Koslowski Square, Lansdowne, Loudoun County, Virginia,
United States, 20176

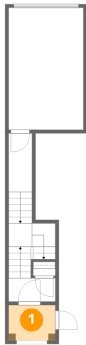


Room dimensions

Floor 3 Total:1098sqft Excluded: 0sqft

#		Max Dimensions	sqft	Included
13	W.I.C.	6'6" x 4'4"	29 sq. ft	Yes
14	Bedroom	11'7" x 13'4"	150 sq. ft	Yes
15	Bedroom	11'4" x 12'11"	131 sq. ft	Yes
16	Hall	13'8" x 17'3"	181 sq. ft	Yes
17	Primary Bedroom	18'0" x 16'4"	273 sq. ft	Yes
18	W.I.C.	6'8" x 10'6"	63 sq. ft	Yes
19	Primary Bath	9'3" x 11'2"	103 sq. ft	Yes
20	Bath	9'3" x 5'0"	46 sq. ft	Yes

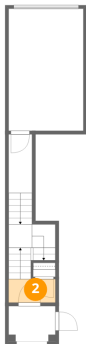
1 Floor 1 - Porch



Max Dimensions: 6'7" x 5'0"
Calculated Area: 33 sq. ft
Included: No

Heated: No
Finished: No
Enclosed: No
Contiguous: Yes
Permitted: Yes
Wet space: No
Addition: No
Conversion: No

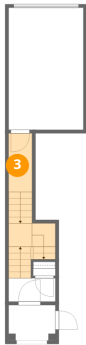
2 Floor 1 - Foyer



Max Dimensions: 6'7" x 3'3"
Calculated Area: 22 sq. ft
Included: Yes

Heated: Yes
Finished: Yes
Enclosed: Yes
Contiguous: Yes
Permitted: Yes
Wet space: No
Addition: No
Conversion: No

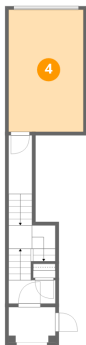
3 Floor 1 - Hall



Max Dimensions: 3'4" x 8'4"
Calculated Area: 84 sq. ft
Included: Yes

Heated: Yes
Finished: Yes
Enclosed: Yes
Contiguous: Yes
Permitted: Yes
Wet space: No
Addition: No
Conversion: No

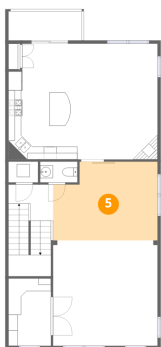
4 Floor 1 - Garage



Max Dimensions: 10'7" x 17'3"
Calculated Area: 183 sq. ft
Included: No

Heated: No
Finished: No
Enclosed: Yes
Contiguous: Yes
Permitted: Yes
Wet space: No
Addition: No
Conversion: No

5 Floor 2 - Dining Area



Max Dimensions: 16'4" x 12'3"
Calculated Area: 186 sq. ft
Included: Yes

Heated: Yes
Finished: Yes
Enclosed: Yes
Contiguous: Yes
Permitted: Yes
Wet space: No
Addition: No
Conversion: No

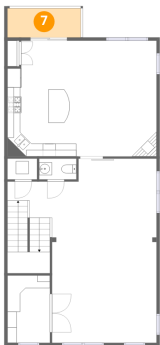
6 Floor 2 - Family Room



Max Dimensions: 12'6" x 18'1"
Calculated Area: 227 sq. ft
Included: Yes

Heated: Yes
Finished: Yes
Enclosed: Yes
Contiguous: Yes
Permitted: Yes
Wet space: No
Addition: No
Conversion: No

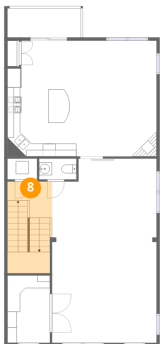
7 Floor 2 - Balcony



Max Dimensions: 11'5" x 4'6"
Calculated Area: 52 sq. ft
Included: No

Heated: No
Finished: No
Enclosed: No
Contiguous: Yes
Permitted: Yes
Wet space: No
Addition: No
Conversion: No

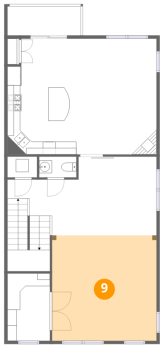
8 Floor 2 - Hall



Max Dimensions: 6'11" x 5'8"
Calculated Area: 98 sq. ft
Included: Yes

Heated: Yes
Finished: Yes
Enclosed: Yes
Contiguous: Yes
Permitted: Yes
Wet space: No
Addition: No
Conversion: No

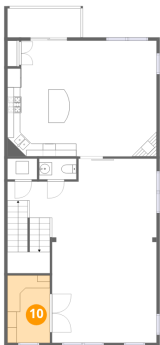
9 Floor 2 - Living Room



Max Dimensions: 16'4" x 16'5"
Calculated Area: 268 sq. ft
Included: Yes

Heated: Yes
Finished: Yes
Enclosed: Yes
Contiguous: Yes
Permitted: Yes
Wet space: No
Addition: No
Conversion: No

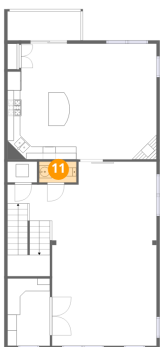
10 Floor 2 - Office



Max Dimensions: 6'8" x 10'6"
Calculated Area: 70 sq. ft
Included: Yes

Heated: Yes
Finished: Yes
Enclosed: Yes
Contiguous: Yes
Permitted: Yes
Wet space: No
Addition: No
Conversion: No

11 Floor 2 - WC



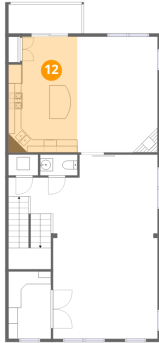
Max Dimensions: 5'10" x 3'3"
Calculated Area: 19 sq. ft
Included: Yes

Heated: Yes
Finished: Yes
Enclosed: Yes
Contiguous: Yes
Permitted: Yes
Wet space: Yes
Addition: No
Conversion: No

Home report

19264 Koslowski Square, Lansdowne, Loudoun County, Virginia,
United States, 20176

12 Floor 2 - Kitchen



Max Dimensions: 10'9" x 18'1"
Calculated Area: 185 sq. ft
Included: Yes

Heated: Yes
Finished: Yes
Enclosed: Yes
Contiguous: Yes
Permitted: Yes
Wet space: No
Addition: No
Conversion: No

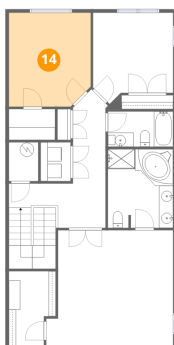
13 Floor 3 - W.I.C.



Max Dimensions: 6'6" x 4'4"
Calculated Area: 29 sq. ft
Included: Yes

Heated: Yes
Finished: Yes
Enclosed: Yes
Contiguous: Yes
Permitted: Yes
Wet space: No
Addition: No
Conversion: No

14 Floor 3 - Bedroom

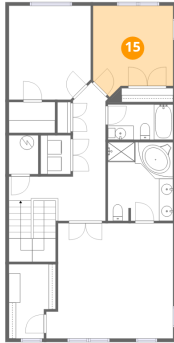


Max Dimensions: 11'7" x 13'4"
Calculated Area: 150 sq. ft
Included: Yes

Heated: Yes
Finished: Yes
Enclosed: Yes
Contiguous: Yes
Permitted: Yes
Wet space: No
Addition: No
Conversion: No

19264 Koslowski Square, Lansdowne, Loudoun County, Virginia,
United States, 20176

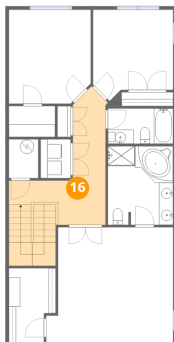
15 Floor 3 - Bedroom



Max Dimensions: 11'4" x 12'11"
Calculated Area: 131 sq. ft
Included: Yes

Heated: Yes
Finished: Yes
Enclosed: Yes
Contiguous: Yes
Permitted: Yes
Wet space: No
Addition: No
Conversion: No

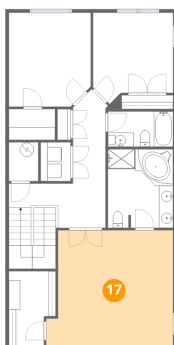
16 Floor 3 - Hall



Max Dimensions: 13'8" x 17'3"
Calculated Area: 181 sq. ft
Included: Yes

Heated: Yes
Finished: Yes
Enclosed: Yes
Contiguous: Yes
Permitted: Yes
Wet space: No
Addition: No
Conversion: No

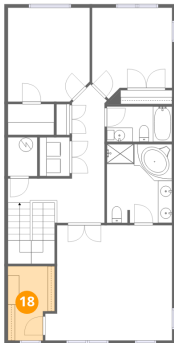
17 Floor 3 - Primary Bedroom



Max Dimensions: 18'0" x 16'4"
Calculated Area: 273 sq. ft
Included: Yes

Heated: Yes
Finished: Yes
Enclosed: Yes
Contiguous: Yes
Permitted: Yes
Wet space: No
Addition: No
Conversion: No

18 Floor 3 - W.I.C.



Max Dimensions: 6'8" x 10'6"
Calculated Area: 63 sq. ft
Included: Yes

Heated: Yes
Finished: Yes
Enclosed: Yes
Contiguous: Yes
Permitted: Yes
Wet space: No
Addition: No
Conversion: No

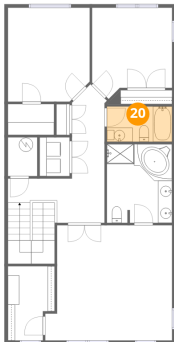
19 Floor 3 - Primary Bath



Max Dimensions: 9'3" x 11'2"
Calculated Area: 103 sq. ft
Included: Yes

Heated: Yes
Finished: Yes
Enclosed: Yes
Contiguous: Yes
Permitted: Yes
Wet space: Yes
Addition: No
Conversion: No

20 Floor 3 - Bath



Max Dimensions: 9'3" x 5'0"
Calculated Area: 46 sq. ft
Included: Yes

Heated: Yes
Finished: Yes
Enclosed: Yes
Contiguous: Yes
Permitted: Yes
Wet space: Yes
Addition: No
Conversion: No