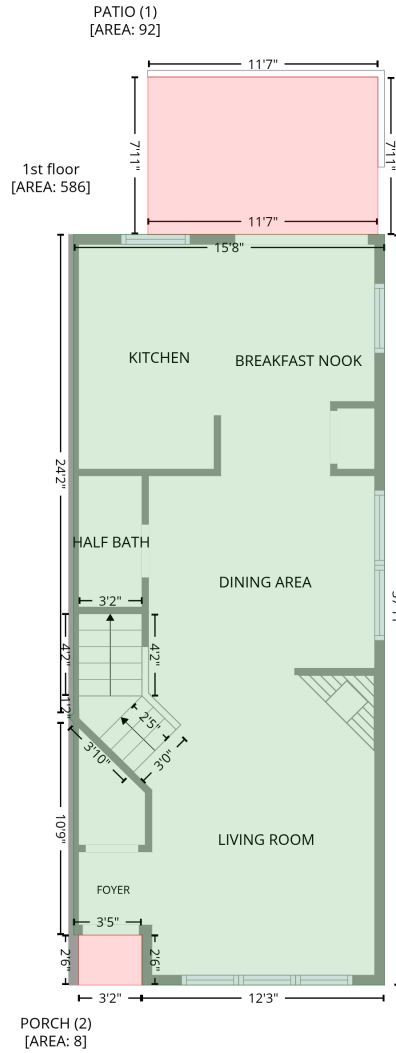


513 Elm Ave, Wake Forest, NC, US

Gross Living Area: 1181 sq. ft

Level 1



Space	Area (sq. ft)	Calculation
1st floor (Living area)	586	Coordinate Polygon Area Algorithm using inches $-((305.8 + 305.8) * (226 - 680.7) + (305.8 + 158.9) * (680.7 - 680.7) + (158.9 + 158.9) * (680.7 - 650.4) + (158.9 + 117.5) * (650.4 - 650.4) + (117.5 + 117.5) * (650.4 - 521.7) + (117.5 + 114.5) * (521.7 - 518.8) + (114.5 + 117.3) * (518.8 - 515.9) + (117.3 + 117.5) * (515.9 - 516.1) + (117.5 + 117.5) * (516.1 - 226) + (117.5 + 305.8) * (226 - 226)) * 0.5 + 0.00694$
PATIO (Non-living area)	92	$-((301.8 + 301.8) * (130.7 - 226) + (301.8 + 162.5) * (226 - 226) + (162.5 + 162.5) * (226 - 130.7) + (162.5 + 301.8) * (130.7 - 130.7)) * 0.5 + 0.00694$

513 Elm Ave, Wake Forest, NC, US

Gross Living Area: 1181 sq. ft

Level 1

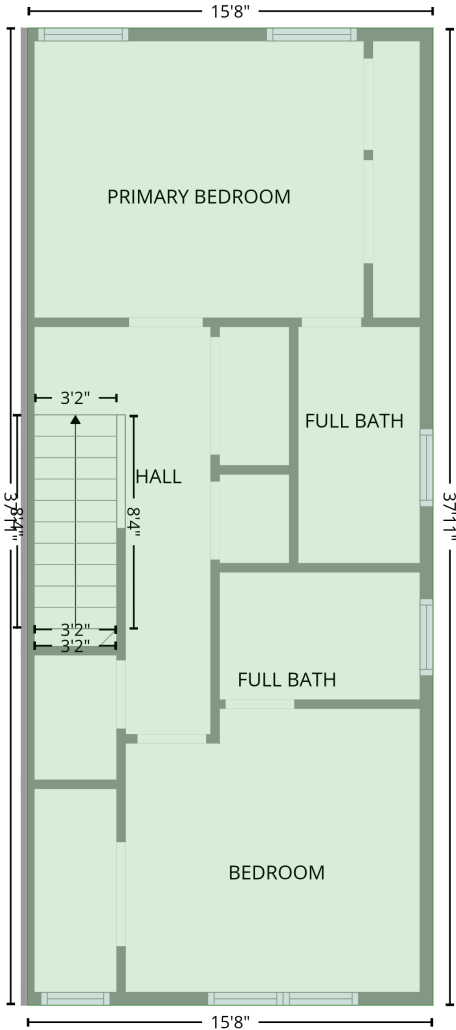
Space	Area (sq. ft)	Calculation <small>Coordinate Polygon Area Algorithm using inches</small>
PORCH (Non-living area)	8	$-((158.9 + 158.9) * (650.4 - 680.7) + (158.9 + 120.5) * (680.7 - 680.7) + (120.5 + 120.5) * (680.7 - 650.4) + (120.5 + 158.9) * (650.4 - 650.4)) * 0.5 * 0.00694$

513 Elm Ave, Wake Forest, NC, US

Gross Living Area: 1181 sq. ft

Level 2

2nd floor
[AREA: 595]



Space	Area (sq. ft)	Calculation <small>Coordinate Polygon Area Algorithm using inches</small>
2nd floor (Living area)	595	$-((305.8 + 305.8) * (226 - 680.7) + (305.8 + 117.5) * (680.7 - 680.7) + (117.5 + 117.5) * (680.7 - 226) + (117.5 + 305.8) * (226 - 226)) * 0.5 * 0.00694$