

Home data report

2608 Loch Haven Drive, Roanoke, Roanoke County, Virginia,
United States, 24019



Total Area: 3653 sq. ft

Below Ground: 1418 sq. ft, 1st Floor: 2235 sq. ft

Excluded: Storage 89 sq. ft, Garage 601 sq. ft, Utility 91 sq. ft, Fireplace 34 sq. ft,
Screened porch 215 sq. ft, Patio 289 sq. ft, Walls: 254 sq. ft

Property summary

 **2** Floors

 **3** Bedrooms

 **3** Bathrooms

Home data report

**2608 Loch Haven Drive, Roanoke, Roanoke County, Virginia,
United States, 24019**



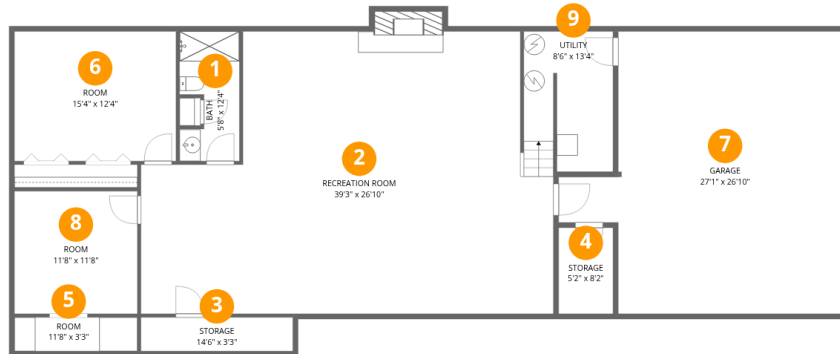
1
Half baths



1
Garages

Home data report

2608 Loch Haven Drive, Roanoke, Roanoke County, Virginia,
United States, 24019



Room dimensions

Floor 1 Below grade

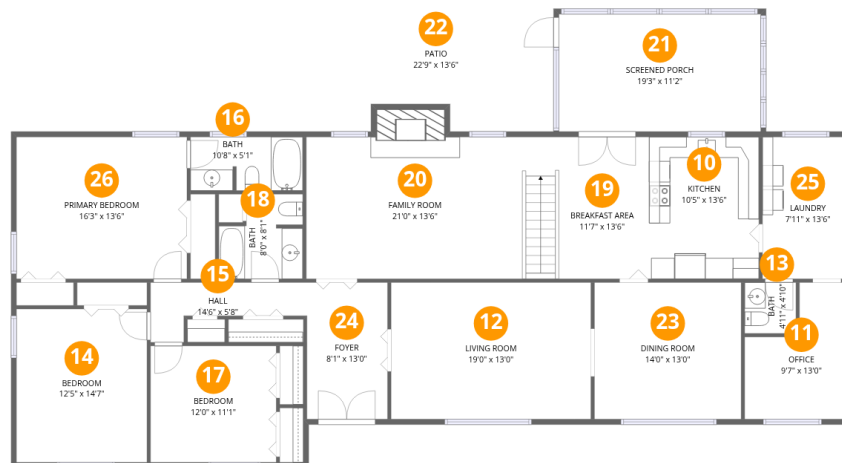
Total:1418sqft

Excluded: 795sqft

#		Dimensions	sqft	Counted as living area
1	Bath	5'8" x 12'4"	63 sq. ft	Yes
2	Recreation Room	39'3" x 26'10"	922 sq. ft	Yes
3	Storage	14'6" x 3'3"	47 sq. ft	No
4	Storage	5'2" x 8'2"	42 sq. ft	No
5	Room	11'8" x 3'3"	38 sq. ft	Yes
6	Room	15'4" x 12'4"	190 sq. ft	Yes
7	Garage	27'1" x 26'10"	601 sq. ft	No
8	Room	11'8" x 11'8"	137 sq. ft	Yes
9	Utility	8'6" x 13'4"	90 sq. ft	No

Home data report

2608 Loch Haven Drive, Roanoke, Roanoke County, Virginia, United States, 24019



Room dimensions

Floor 2

Total:2235sqft Excluded: 524sqft

#		Dimensions	sqft	Counted as living area
10	Kitchen	10'5" x 13'6"	141 sq. ft	Yes
11	Office	9'7" x 13'0"	98 sq. ft	Yes
12	Living Room	19'0" x 13'0"	248 sq. ft	Yes
13	Bath	4'11" x 4'10"	24 sq. ft	Yes
14	Bedroom	12'5" x 14'7"	181 sq. ft	Yes
15	Hall	14'6" x 5'8"	54 sq. ft	Yes
16	Bath	10'8" x 5'1"	54 sq. ft	Yes
17	Bedroom	12'0" x 11'1"	133 sq. ft	Yes
18	Bath	8'0" x 8'1"	56 sq. ft	Yes
19	Breakfast Area	11'7" x 13'6"	157 sq. ft	Yes
20	Family Room	21'0" x 13'6"	302 sq. ft	Yes

Home data report

**2608 Loch Haven Drive, Roanoke, Roanoke County, Virginia,
United States, 24019**

#		Dimensions	sqft	Counted as living area
21	Screened Porch	19'3" x 11'2"	215 sq. ft	No
22	Patio	22'9" x 13'6"	289 sq. ft	No
23	Dining Room	14'0" x 13'0"	182 sq. ft	Yes
24	Foyer	8'1" x 13'0"	101 sq. ft	Yes
25	Laundry	7'11" x 13'6"	107 sq. ft	Yes
26	Primary Bedroom	16'3" x 13'6"	219 sq. ft	Yes

2608 Loch Haven Drive, Roanoke, Roanoke County, Virginia,
United States, 24019

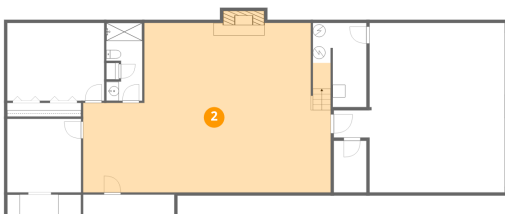
1 Floor 1 - Bath



Dimensions: 5'8" x 12'4"
Area: 63 sq. ft
Counted as living area: Yes

Heated: Yes
Finished: Yes
Enclosed: Yes
Contiguous: Yes
Permitted: Yes
Wet space: Yes
Addition: No
Conversion: No

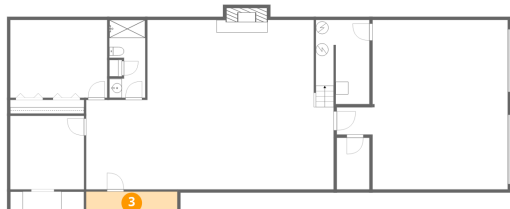
2 Floor 1 - Recreation Room



Dimensions: 39'3" x 26'10"
Area: 922 sq. ft
Counted as living area: Yes

Heated: Yes
Finished: Yes
Enclosed: Yes
Contiguous: Yes
Permitted: Yes
Wet space: No
Addition: No
Conversion: No

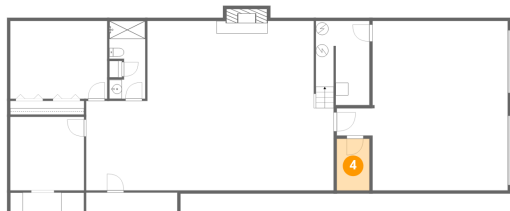
3 Floor 1 - Storage



Dimensions: 14'6" x 3'3"
Area: 47 sq. ft
Counted as living area: No

Heated: No
Finished: No
Enclosed: No
Contiguous: Yes
Permitted: Yes
Wet space: No
Addition: No
Conversion: No

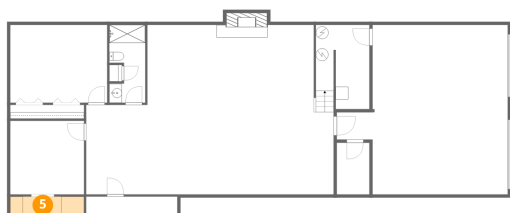
4 Floor 1 - Storage



Dimensions: 5'2" x 8'2"
Area: 42 sq. ft
Counted as living area: No

Heated: No
Finished: No
Enclosed: No
Contiguous: Yes
Permitted: Yes
Wet space: No
Addition: No
Conversion: No

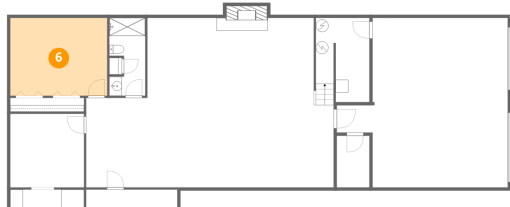
5 Floor 1 - Room



Dimensions: 11'8" x 3'3"
Area: 38 sq. ft
Counted as living area: Yes

Heated: Yes
Finished: Yes
Enclosed: Yes
Contiguous: Yes
Permitted: Yes
Wet space: No
Addition: No
Conversion: No

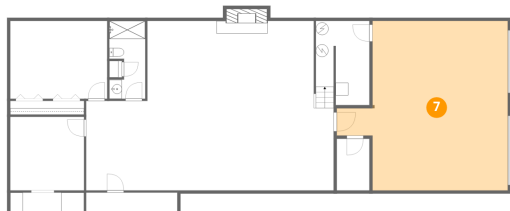
6 Floor 1 - Room



Dimensions: 15'4" x 12'4"
Area: 190 sq. ft
Counted as living area: Yes

Heated: Yes
Finished: Yes
Enclosed: Yes
Contiguous: Yes
Permitted: Yes
Wet space: No
Addition: No
Conversion: No

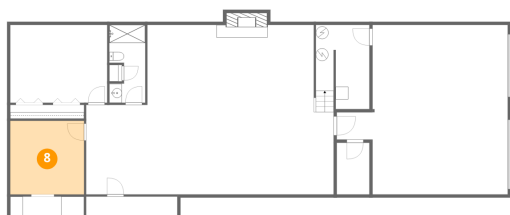
7 Floor 1 - Garage



Dimensions: 27'1" x 26'10"
Area: 601 sq. ft
Counted as living area: No

Heated: No
Finished: No
Enclosed: Yes
Contiguous: Yes
Permitted: Yes
Wet space: No
Addition: No
Conversion: No

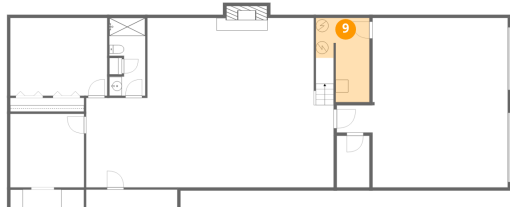
8 Floor 1 - Room



Dimensions: 11'8" x 11'8"
Area: 137 sq. ft
Counted as living area: Yes

Heated: Yes
Finished: Yes
Enclosed: Yes
Contiguous: Yes
Permitted: Yes
Wet space: No
Addition: No
Conversion: No

9 Floor 1 - Utility



Dimensions: 8'6" x 13'4"
Area: 90 sq. ft
Counted as living area: No

Heated: Yes
Finished: No
Enclosed: Yes
Contiguous: Yes
Permitted: Yes
Wet space: No
Addition: No
Conversion: No

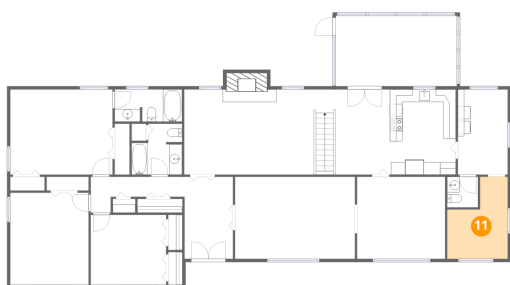
10 Floor 2 - Kitchen



Dimensions: 10'5" x 13'6"
Area: 141 sq. ft
Counted as living area: Yes

Heated: Yes
Finished: Yes
Enclosed: Yes
Contiguous: Yes
Permitted: Yes
Wet space: No
Addition: No
Conversion: No

11 Floor 2 - Office



Dimensions: 9'7" x 13'0"
Area: 98 sq. ft
Counted as living area: Yes

Heated: Yes
Finished: Yes
Enclosed: Yes
Contiguous: Yes
Permitted: Yes
Wet space: No
Addition: No
Conversion: No

12 Floor 2 - Living Room



Dimensions: 19'0" x 13'0"
Area: 248 sq. ft
Counted as living area: Yes

Heated: Yes
Finished: Yes
Enclosed: Yes
Contiguous: Yes
Permitted: Yes
Wet space: No
Addition: No
Conversion: No

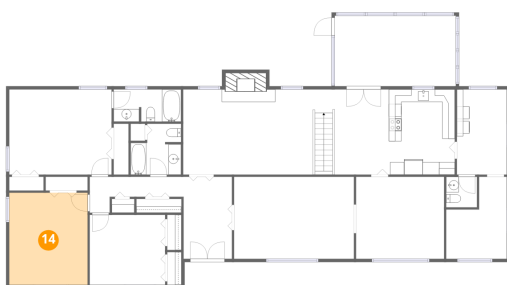
13 Floor 2 - Bath



Dimensions: 4'11" x 4'10"
Area: 24 sq. ft
Counted as living area: Yes

Heated: Yes
Finished: Yes
Enclosed: Yes
Contiguous: Yes
Permitted: Yes
Wet space: Yes
Addition: No
Conversion: No

14 Floor 2 - Bedroom



Dimensions: 12'5" x 14'7"
Area: 181 sq. ft
Counted as living area: Yes

Heated: Yes
Finished: Yes
Enclosed: Yes
Contiguous: Yes
Permitted: Yes
Wet space: No
Addition: No
Conversion: No

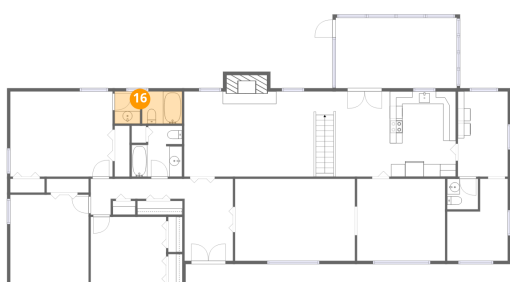
15 Floor 2 - Hall



Dimensions: 14'6" x 5'8"
Area: 54 sq. ft
Counted as living area: Yes

Heated: Yes
Finished: Yes
Enclosed: Yes
Contiguous: Yes
Permitted: Yes
Wet space: No
Addition: No
Conversion: No

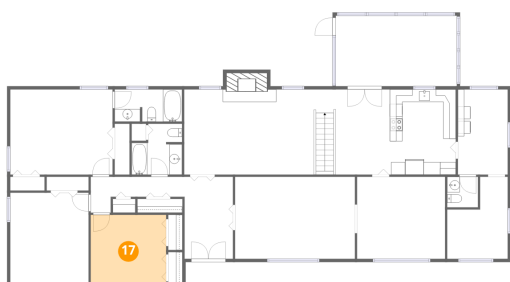
16 Floor 2 - Bath



Dimensions: 10'8" x 5'1"
Area: 54 sq. ft
Counted as living area: Yes

Heated: Yes
Finished: Yes
Enclosed: Yes
Contiguous: Yes
Permitted: Yes
Wet space: Yes
Addition: No
Conversion: No

17 Floor 2 - Bedroom



Dimensions: 12'0" x 11'1"
Area: 133 sq. ft
Counted as living area: Yes

Heated: Yes
Finished: Yes
Enclosed: Yes
Contiguous: Yes
Permitted: Yes
Wet space: No
Addition: No
Conversion: No

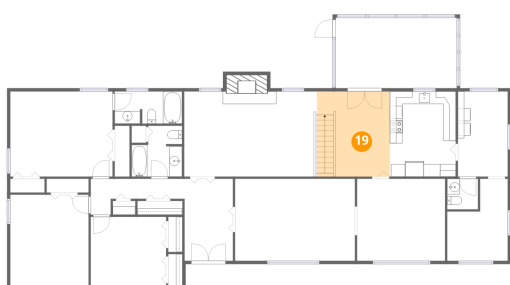
18 Floor 2 - Bath



Dimensions: 8'0" x 8'1"
Area: 56 sq. ft
Counted as living area: Yes

Heated: Yes
Finished: Yes
Enclosed: Yes
Contiguous: Yes
Permitted: Yes
Wet space: Yes
Addition: No
Conversion: No

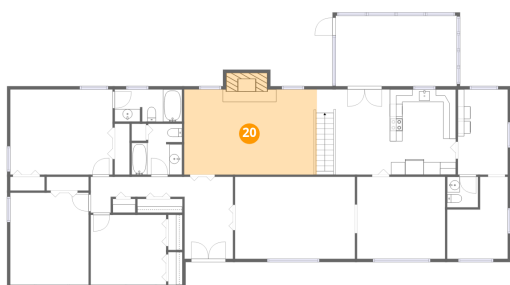
19 Floor 2 - Breakfast Area



Dimensions: 11'7" x 13'6"
Area: 157 sq. ft
Counted as living area: Yes

Heated: Yes
Finished: Yes
Enclosed: Yes
Contiguous: Yes
Permitted: Yes
Wet space: No
Addition: No
Conversion: No

20 Floor 2 - Family Room



Dimensions: 21'0" x 13'6"
Area: 302 sq. ft
Counted as living area: Yes

Heated: Yes
Finished: Yes
Enclosed: Yes
Contiguous: Yes
Permitted: Yes
Wet space: No
Addition: No
Conversion: No

21 Floor 2 - Screened Porch



Dimensions: 19'3" x 11'2"
Area: 215 sq. ft
Counted as living area: No

Heated: No
Finished: No
Enclosed: No
Contiguous: Yes
Permitted: Yes
Wet space: No
Addition: No
Conversion: No

22 Floor 2 - Patio



Dimensions: 22'9" x 13'6"
Area: 289 sq. ft
Counted as living area: No

Heated: No
Finished: No
Enclosed: No
Contiguous: Yes
Permitted: Yes
Wet space: No
Addition: No
Conversion: No

23 Floor 2 - Dining Room



Dimensions: 14'0" x 13'0"
Area: 182 sq. ft
Counted as living area: Yes

Heated: Yes
Finished: Yes
Enclosed: Yes
Contiguous: Yes
Permitted: Yes
Wet space: No
Addition: No
Conversion: No

2608 Loch Haven Drive, Roanoke, Roanoke County, Virginia,
United States, 24019

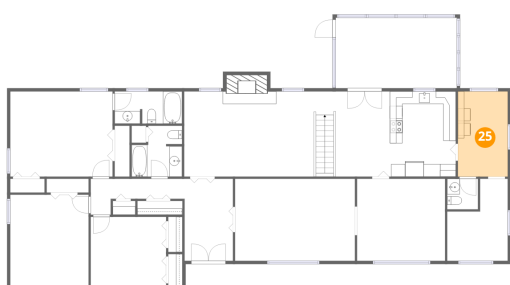
24 Floor 2 - Foyer



Dimensions: 8'1" x 13'0"
Area: 101 sq. ft
Counted as living area: Yes

Heated: Yes
Finished: Yes
Enclosed: Yes
Contiguous: Yes
Permitted: Yes
Wet space: No
Addition: No
Conversion: No

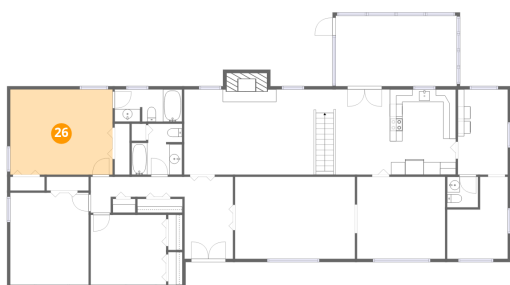
25 Floor 2 - Laundry



Dimensions: 7'11" x 13'6"
Area: 107 sq. ft
Counted as living area: Yes

Heated: Yes
Finished: Yes
Enclosed: Yes
Contiguous: Yes
Permitted: Yes
Wet space: No
Addition: No
Conversion: No

26 Floor 2 - Primary Bedroom



Dimensions: 16'3" x 13'6"
Area: 219 sq. ft
Counted as living area: Yes

Heated: Yes
Finished: Yes
Enclosed: Yes
Contiguous: Yes
Permitted: Yes
Wet space: No
Addition: No
Conversion: No