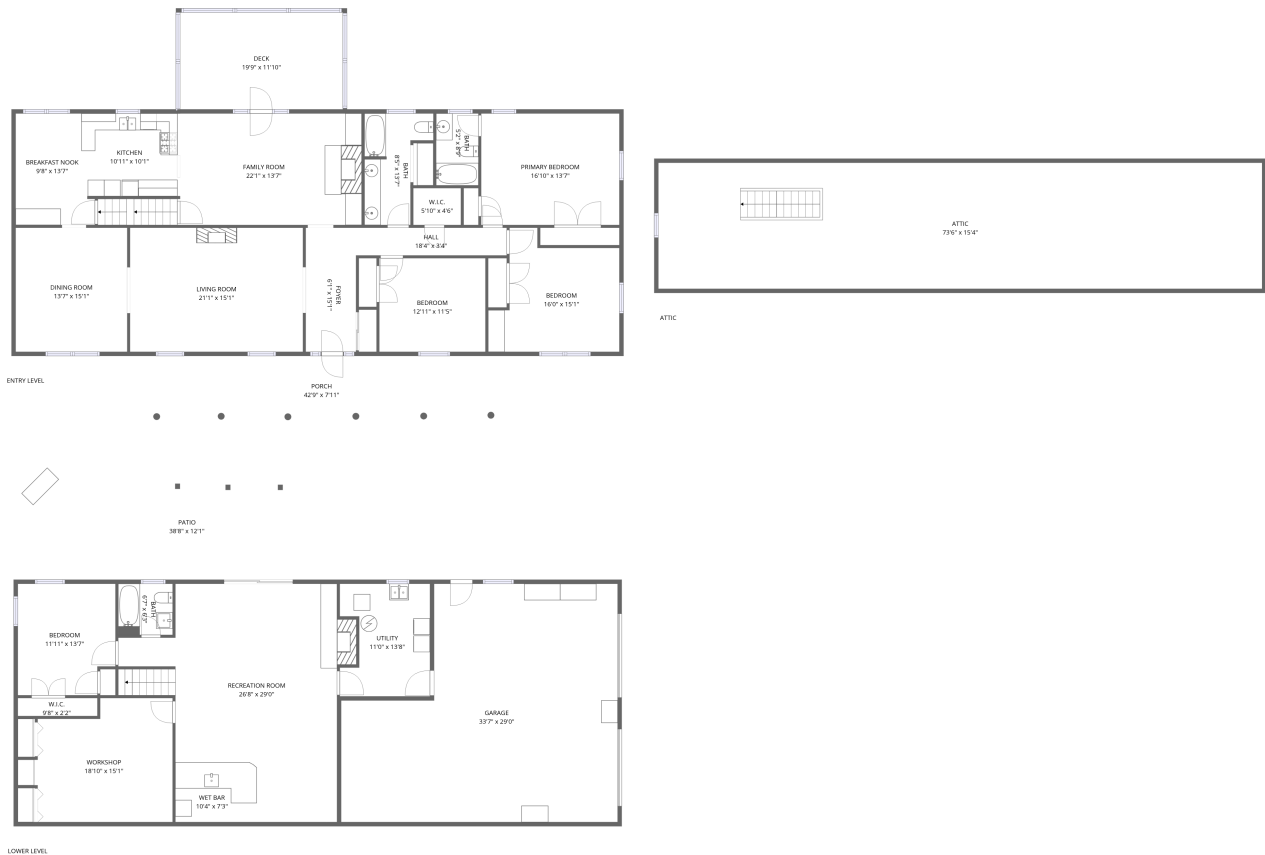


## Home report

**5663 Club Lane, Cave Spring, Roanoke, Roanoke County, Virginia, United States, 24018**



**Total Area: 3038 sq. ft**

Floor 1: 910 sq. ft, Floor 2: 2128 sq. ft, Floor 3: 0 sq. ft

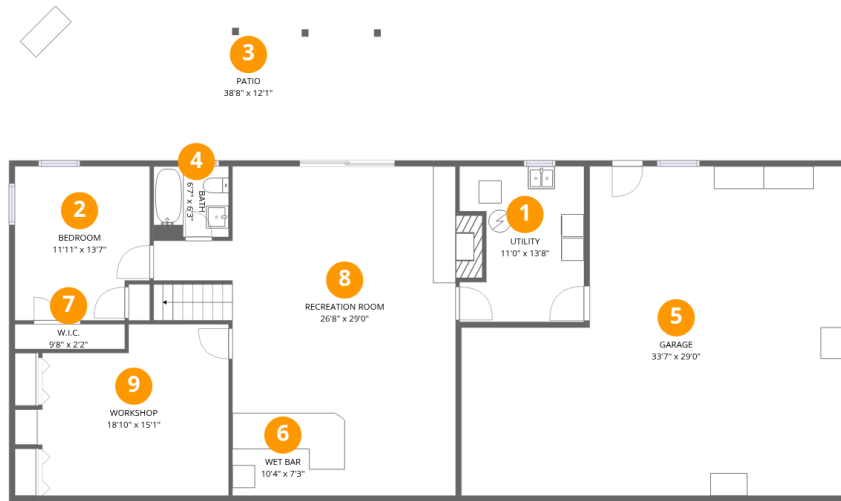
Excluded: Patio 432 sq. ft, Workshop 237 sq. ft, Garage 816 sq. ft, Utility 136 sq. ft, Porch 340 sq. ft, Deck 234 sq. ft, Attic 1128 sq. ft, Walls: 337 sq. ft

## Property summary



Home report

5663 Club Lane, Cave Spring, Roanoke, Roanoke County, Virginia, United States, 24018



## Room dimensions

Floor 1

Total:910sqft

Excluded: 1621sqft

#		Max Dimensions	sqft	Included
1	Utility	11'0" x 13'8"	136 sq. ft	No
2	Bedroom	11'11" x 13'7"	154 sq. ft	Yes
3	Patio	38'8" x 12'1"	432 sq. ft	No
4	Bath	6'7" x 6'3"	41 sq. ft	Yes
5	Garage	33'7" x 29'0"	816 sq. ft	No
6	Wet Bar	10'4" x 7'3"	75 sq. ft	Yes
7	W.I.C.	9'8" x 2'2"	21 sq. ft	Yes
8	Recreation Room	26'8" x 29'0"	556 sq. ft	Yes
9	Workshop	18'10" x 15'1"	237 sq. ft	No

## Home report

5663 Club Lane, Cave Spring, Roanoke, Roanoke County, Virginia, United States, 24018



## Room dimensions

Floor 2

Total:2128sqft

Excluded: 574sqft

#		Max Dimensions	sqft	Included
10	W.I.C.	5'10" x 4'6"	26 sq. ft	Yes
11	Family Room	22'1" x 13'7"	300 sq. ft	Yes
12	Foyer	6'1" x 15'1"	93 sq. ft	Yes
13	Living Room	21'1" x 15'1"	318 sq. ft	Yes
14	Breakfast Nook	9'8" x 13'7"	122 sq. ft	Yes
15	Bedroom	16'0" x 15'1"	191 sq. ft	Yes
16	Bedroom	12'11" x 11'5"	147 sq. ft	Yes
17	Porch	42'9" x 7'11"	340 sq. ft	No
18	Bath	5'2" x 8'9"	45 sq. ft	Yes
19	Deck	19'9" x 11'10"	234 sq. ft	No
20	Bath	8'5" x 13'7"	84 sq. ft	Yes

Home report

**5663 Club Lane, Cave Spring, Roanoke, Roanoke County,  
Virginia, United States, 24018**

#		Max Dimensions	sqft	Included
21	Primary Bedroom	16'10" x 13'7"	228 sq. ft	Yes
22	Hall	18'4" x 3'4"	62 sq. ft	Yes
23	Dining Room	13'7" x 15'1"	205 sq. ft	Yes
24	Kitchen	10'11" x 10'1"	109 sq. ft	Yes

Home report

5663 Club Lane, Cave Spring, Roanoke, Roanoke County,  
Virginia, United States, 24018



## Room dimensions

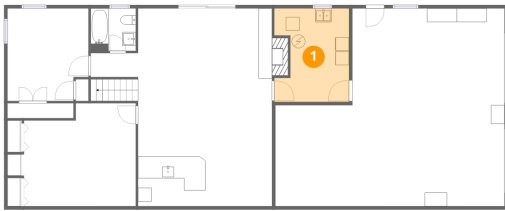
Floor 3

Total:0sqft

Excluded: 1128sqft

#		Max Dimensions	sqft	Included
25	Attic	73'6" x 15'4"	1128 sq. ft	No

## 1 Floor 1 - Utility



Max Dimensions: 11'0" x  
13'8"  
Calculated Area: 136 sq. ft  
Included: No

Heated: Yes  
Finished: No  
Enclosed: Yes  
Contiguous:  
Yes  
Permitted: Yes  
Wet space: No  
Addition: No  
Conversion: No

## 2 Floor 1 - Bedroom

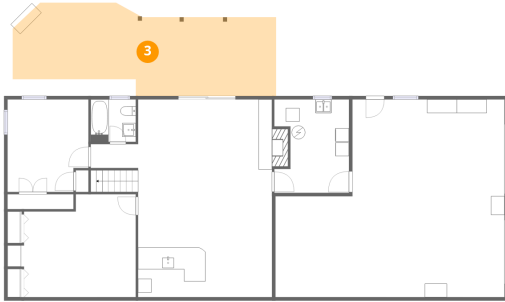


Max Dimensions: 11'11" x  
13'7"  
Calculated Area: 154 sq. ft  
Included: Yes

Heated: Yes  
Finished: Yes  
Enclosed: Yes  
Contiguous:  
Yes  
Permitted: Yes  
Wet space: No  
Addition: No  
Conversion: No

5663 Club Lane, Cave Spring, Roanoke, Roanoke County, Virginia, United States, 24018

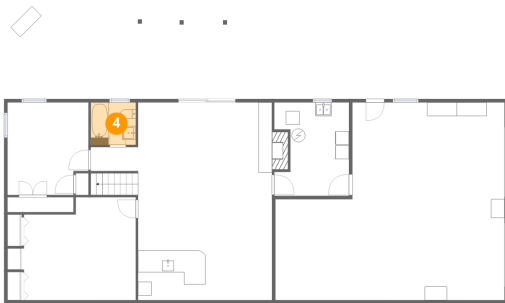
### 3 Floor 1 - Patio



Max Dimensions: 38'8" x 12'1"  
Calculated Area: 432 sq. ft  
Included: No

Heated: No  
Finished: Yes  
Enclosed: No  
Contiguous: Yes  
Permitted: Yes  
Wet space: No  
Addition: No  
Conversion: No

### 4 Floor 1 - Bath



Max Dimensions: 6'7" x 6'3"  
Calculated Area: 41 sq. ft  
Included: Yes

Heated: Yes  
Finished: Yes  
Enclosed: Yes  
Contiguous: Yes  
Permitted: Yes  
Wet space: Yes  
Addition: No  
Conversion: No

### 5 Floor 1 - Garage

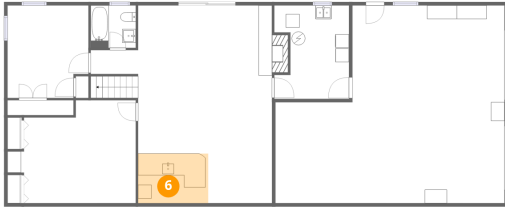


Max Dimensions: 33'7" x 29'0"  
Calculated Area: 816 sq. ft  
Included: No

Heated: No  
Finished: No  
Enclosed: Yes  
Contiguous: Yes  
Permitted: Yes  
Wet space: No  
Addition: No  
Conversion: No

5663 Club Lane, Cave Spring, Roanoke, Roanoke County, Virginia, United States, 24018

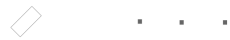
**6** Floor 1 - Wet Bar



Max Dimensions: 10'4" x 7'3"  
Calculated Area: 75 sq. ft  
Included: Yes

Heated: Yes  
Finished: Yes  
Enclosed: Yes  
Contiguous: Yes  
Permitted: Yes  
Wet space: No  
Addition: No  
Conversion: No

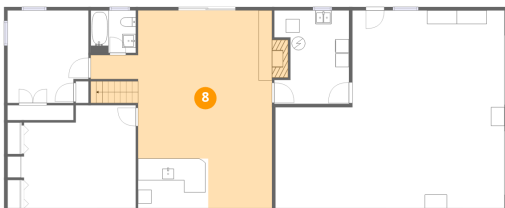
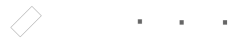
**7** Floor 1 - W.I.C.



Max Dimensions: 9'8" x 2'2"  
Calculated Area: 21 sq. ft  
Included: Yes

Heated: Yes  
Finished: Yes  
Enclosed: Yes  
Contiguous: Yes  
Permitted: Yes  
Wet space: No  
Addition: No  
Conversion: No

**8** Floor 1 - Recreation Room



Max Dimensions: 26'8" x 29'0"  
Calculated Area: 556 sq. ft  
Included: Yes

Heated: Yes  
Finished: Yes  
Enclosed: Yes  
Contiguous: Yes  
Permitted: Yes  
Wet space: No  
Addition: No  
Conversion: No

5663 Club Lane, Cave Spring, Roanoke, Roanoke County, Virginia, United States, 24018

**9** Floor 1 - Workshop



Max Dimensions: 18'10" x 15'1"  
Calculated Area: 237 sq. ft  
Included: No

Heated: No  
Finished: No  
Enclosed: Yes  
Contiguous: No  
Permitted: Yes  
Wet space: No  
Addition: No  
Conversion: No

**10** Floor 2 - W.I.C.



Max Dimensions: 5'10" x 4'6"  
Calculated Area: 26 sq. ft  
Included: Yes

Heated: Yes  
Finished: Yes  
Enclosed: Yes  
Contiguous: Yes  
Permitted: Yes  
Wet space: No  
Addition: No  
Conversion: No

**11** Floor 2 - Family Room



Max Dimensions: 22'1" x 13'7"  
Calculated Area: 300 sq. ft  
Included: Yes

Heated: Yes  
Finished: Yes  
Enclosed: Yes  
Contiguous: Yes  
Permitted: Yes  
Wet space: No  
Addition: No  
Conversion: No

5663 Club Lane, Cave Spring, Roanoke, Roanoke County, Virginia, United States, 24018

**12** Floor 2 - Foyer



Max Dimensions: 6'1" x 15'1"  
Calculated Area: 93 sq. ft  
Included: Yes

Heated: Yes  
Finished: Yes  
Enclosed: Yes  
Contiguous: Yes  
Permitted: Yes  
Wet space: No  
Addition: No  
Conversion: No

**13** Floor 2 - Living Room



Max Dimensions: 21'1" x 15'1"  
Calculated Area: 318 sq. ft  
Included: Yes

Heated: Yes  
Finished: Yes  
Enclosed: Yes  
Contiguous: Yes  
Permitted: Yes  
Wet space: No  
Addition: No  
Conversion: No

**14** Floor 2 - Breakfast Nook



Max Dimensions: 9'8" x 13'7"  
Calculated Area: 122 sq. ft  
Included: Yes

Heated: Yes  
Finished: Yes  
Enclosed: Yes  
Contiguous: Yes  
Permitted: Yes  
Wet space: No  
Addition: No  
Conversion: No

5663 Club Lane, Cave Spring, Roanoke, Roanoke County, Virginia, United States, 24018

**15** Floor 2 - Bedroom



Max Dimensions: 16'0" x 15'1"  
Calculated Area: 191 sq. ft  
Included: Yes

Heated: Yes  
Finished: Yes  
Enclosed: Yes  
Contiguous: Yes  
Permitted: Yes  
Wet space: No  
Addition: No  
Conversion: No

**16** Floor 2 - Bedroom



Max Dimensions: 12'11" x 11'5"  
Calculated Area: 147 sq. ft  
Included: Yes

Heated: Yes  
Finished: Yes  
Enclosed: Yes  
Contiguous: Yes  
Permitted: Yes  
Wet space: No  
Addition: No  
Conversion: No

**17** Floor 2 - Porch



Max Dimensions: 42'9" x 7'11"  
Calculated Area: 340 sq. ft  
Included: No

Heated: No  
Finished: Yes  
Enclosed: No  
Contiguous: Yes  
Permitted: Yes  
Wet space: No  
Addition: No  
Conversion: No

**18** Floor 2 - Bath



Max Dimensions: 5'2" x 8'9"  
Calculated Area: 45 sq. ft  
Included: Yes

Heated: Yes  
Finished: Yes  
Enclosed: Yes  
Contiguous: Yes  
Permitted: Yes  
Wet space: Yes  
Addition: No  
Conversion: No

**19** Floor 2 - Deck



Max Dimensions: 19'9" x 11'10"  
Calculated Area: 234 sq. ft  
Included: No

Heated: No  
Finished: No  
Enclosed: No  
Contiguous: No  
Permitted: Yes  
Wet space: No  
Addition: No  
Conversion: No

**20** Floor 2 - Bath



Max Dimensions: 8'5" x 13'7"  
Calculated Area: 84 sq. ft  
Included: Yes

Heated: Yes  
Finished: Yes  
Enclosed: Yes  
Contiguous: Yes  
Permitted: Yes  
Wet space: Yes  
Addition: No  
Conversion: No

5663 Club Lane, Cave Spring, Roanoke, Roanoke County, Virginia, United States, 24018

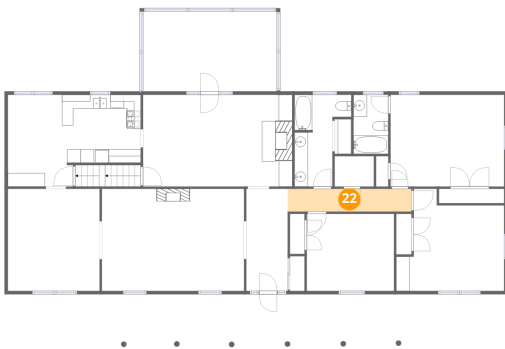
**21** Floor 2 - Primary Bedroom



Max Dimensions: 16'10" x 13'7"  
Calculated Area: 228 sq. ft  
Included: Yes

Heated: Yes  
Finished: Yes  
Enclosed: Yes  
Contiguous: Yes  
Permitted: Yes  
Wet space: No  
Addition: No  
Conversion: No

**22** Floor 2 - Hall



Max Dimensions: 18'4" x 3'4"  
Calculated Area: 62 sq. ft  
Included: Yes

Heated: Yes  
Finished: Yes  
Enclosed: Yes  
Contiguous: Yes  
Permitted: Yes  
Wet space: No  
Addition: No  
Conversion: No

**23** Floor 2 - Dining Room



Max Dimensions: 13'7" x 15'1"  
Calculated Area: 205 sq. ft  
Included: Yes

Heated: Yes  
Finished: Yes  
Enclosed: Yes  
Contiguous: Yes  
Permitted: Yes  
Wet space: No  
Addition: No  
Conversion: No

5663 Club Lane, Cave Spring, Roanoke, Roanoke County,  
Virginia, United States, 24018

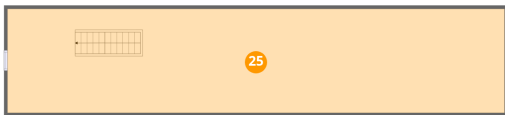
## 24 Floor 2 - Kitchen



Max Dimensions: 10'11" x 10'1"  
Calculated Area: 109 sq. ft  
Included: Yes

Heated: Yes  
Finished: Yes  
Enclosed: Yes  
Contiguous: Yes  
Permitted: Yes  
Wet space: No  
Addition: No  
Conversion: No

## 25 Floor 3 - Attic



Max Dimensions: 73'6" x 15'4"  
Calculated Area: 1128 sq. ft  
Included: No

Heated: No  
Finished: No  
Enclosed: Yes  
Contiguous: Yes  
Permitted: Yes  
Wet space: No  
Addition: No  
Conversion: No