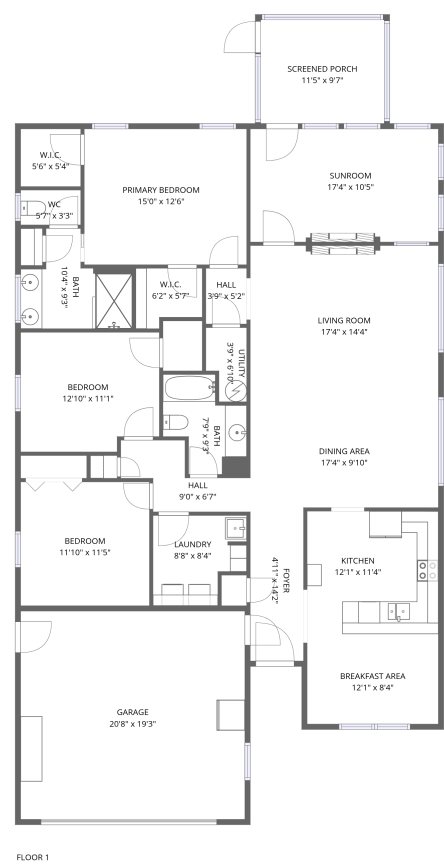


Home report

1351 Aarons Run Cir, Salem, Roanoke County, Virginia, United States, 24153




Total Area: 1857 sq. ft

Floor 1: 1857 sq. ft

Excluded: Garage 398 sq. ft, Screened porch 109 sq. ft, Walls: 138 sq. ft

Property summary

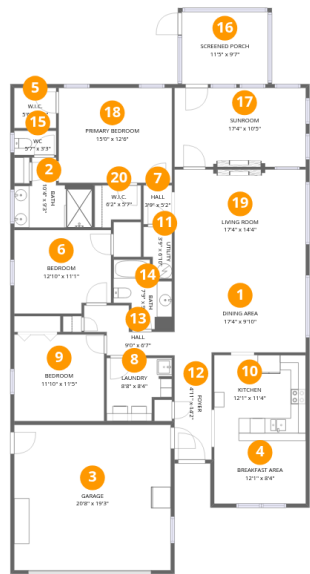
1
Floors

3
Bedrooms

2
Bathrooms

1
Garages

1351 Aarons Run Cir, Salem, Roanoke County, Virginia, United States, 24153



Room dimensions

Floor 1 Total:1857sqft Excluded: 507sqft

#		Max Dimensions	sqft	Included
1	Dining Area	17'4" x 9'10"	172 sq. ft	Yes
2	Bath	10'4" x 9'3"	69 sq. ft	Yes
3	Garage	20'8" x 19'3"	398 sq. ft	No
4	Breakfast Area	12'1" x 8'4"	101 sq. ft	Yes
5	W.I.C.	5'6" x 5'4"	29 sq. ft	Yes
6	Bedroom	12'10" x 11'1"	136 sq. ft	Yes
7	Hall	3'9" x 5'2"	19 sq. ft	Yes
8	Laundry	8'8" x 8'4"	63 sq. ft	Yes
9	Bedroom	11'10" x 11'5"	136 sq. ft	Yes
10	Kitchen	12'1" x 11'4"	137 sq. ft	Yes
11	Utility	3'9" x 6'10"	22 sq. ft	Yes

Home report

1351 Aarons Run Cir, Salem, Roanoke County, Virginia, United States, 24153

#		Max Dimensions	sqft	Included
12	Foyer	4'11" x 14'2"	70 sq. ft	Yes
13	Hall	9'0" x 6'7"	49 sq. ft	Yes
14	Bath	7'9" x 9'3"	55 sq. ft	Yes
15	WC	5'7" x 3'3"	18 sq. ft	Yes
16	Screened Porch	11'5" x 9'7"	109 sq. ft	No
17	Sunroom	17'4" x 10'5"	181 sq. ft	Yes
18	Primary Bedroom	15'0" x 12'6"	188 sq. ft	Yes
19	Living Room	17'4" x 14'4"	248 sq. ft	Yes
20	W.I.C.	6'2" x 5'7"	30 sq. ft	Yes

1351 Aarons Run Cir, Salem, Roanoke County, Virginia, United States, 24153

1 Floor 1 - Dining Area



Max Dimensions: 17'4" x 9'10"
Calculated Area: 172 sq. ft
Included: Yes

Heated: Yes
Finished: Yes
Enclosed: Yes
Contiguous: Yes
Permitted: Yes
Wet space: No
Addition: No
Conversion: No

2 Floor 1 - Bath



Max Dimensions: 10'4" x 9'3"
Calculated Area: 69 sq. ft
Included: Yes

Heated: Yes
Finished: Yes
Enclosed: Yes
Contiguous: Yes
Permitted: Yes
Wet space: Yes
Addition: No
Conversion: No

1351 Aarons Run Cir, Salem, Roanoke County, Virginia, United States, 24153

3 Floor 1 - Garage



Max Dimensions: 20'8" x 19'3"
Calculated Area: 398 sq. ft
Included: No

Heated: No
Finished: No
Enclosed: Yes
Contiguous: Yes
Permitted: Yes
Wet space: No
Addition: No
Conversion: No

4 Floor 1 - Breakfast Area



Max Dimensions: 12'1" x 8'4"
Calculated Area: 101 sq. ft
Included: Yes

Heated: Yes
Finished: Yes
Enclosed: Yes
Contiguous: Yes
Permitted: Yes
Wet space: No
Addition: No
Conversion: No

5 Floor 1 - W.I.C.



Max Dimensions: 5'6" x 5'4"
Calculated Area: 29 sq. ft
Included: Yes

Heated: Yes
Finished: Yes
Enclosed: Yes
Contiguous: Yes
Permitted: Yes
Wet space: No
Addition: No
Conversion: No

1351 Aarons Run Cir, Salem, Roanoke County, Virginia, United States, 24153

6 Floor 1 - Bedroom



Max Dimensions: 12'10" x 11'1"
Calculated Area: 136 sq. ft
Included: Yes

Heated: Yes
Finished: Yes
Enclosed: Yes
Contiguous: Yes
Permitted: Yes
Wet space: No
Addition: No
Conversion: No

7 Floor 1 - Hall



Max Dimensions: 3'9" x 5'2"
Calculated Area: 19 sq. ft
Included: Yes

Heated: Yes
Finished: Yes
Enclosed: Yes
Contiguous: Yes
Permitted: Yes
Wet space: No
Addition: No
Conversion: No

8 Floor 1 - Laundry



Max Dimensions: 8'8" x 8'4"
Calculated Area: 63 sq. ft
Included: Yes

Heated: Yes
Finished: Yes
Enclosed: Yes
Contiguous: Yes
Permitted: Yes
Wet space: No
Addition: No
Conversion: No

1351 Aarons Run Cir, Salem, Roanoke County, Virginia, United States, 24153

9 Floor 1 - Bedroom



Max Dimensions: 11'10" x 11'5"
Calculated Area: 136 sq. ft
Included: Yes

Heated: Yes
Finished: Yes
Enclosed: Yes
Contiguous: Yes
Permitted: Yes
Wet space: No
Addition: No
Conversion: No

10 Floor 1 - Kitchen



Max Dimensions: 12'1" x 11'4"
Calculated Area: 137 sq. ft
Included: Yes

Heated: Yes
Finished: Yes
Enclosed: Yes
Contiguous: Yes
Permitted: Yes
Wet space: No
Addition: No
Conversion: No

11 Floor 1 - Utility



Max Dimensions: 3'9" x 6'10"
Calculated Area: 22 sq. ft
Included: Yes

Heated: Yes
Finished: Yes
Enclosed: Yes
Contiguous: Yes
Permitted: Yes
Wet space: No
Addition: No
Conversion: No

1351 Aarons Run Cir, Salem, Roanoke County, Virginia, United States, 24153

12 Floor 1 - Foyer



Max Dimensions: 4'11" x 14'2"
Calculated Area: 70 sq. ft
Included: Yes

Heated: Yes
Finished: Yes
Enclosed: Yes
Contiguous: Yes
Permitted: Yes
Wet space: No
Addition: No
Conversion: No

13 Floor 1 - Hall



Max Dimensions: 9'0" x 6'7"
Calculated Area: 49 sq. ft
Included: Yes

Heated: Yes
Finished: Yes
Enclosed: Yes
Contiguous: Yes
Permitted: Yes
Wet space: No
Addition: No
Conversion: No

14 Floor 1 - Bath



Max Dimensions: 7'9" x 9'3"
Calculated Area: 55 sq. ft
Included: Yes

Heated: Yes
Finished: Yes
Enclosed: Yes
Contiguous: Yes
Permitted: Yes
Wet space: Yes
Addition: No
Conversion: No

1351 Aarons Run Cir, Salem, Roanoke County, Virginia, United States, 24153

15 Floor 1 - WC



Max Dimensions: 5'7" x 3'3"
Calculated Area: 18 sq. ft
Included: Yes

Heated: Yes
Finished: Yes
Enclosed: Yes
Contiguous: Yes
Permitted: Yes
Wet space: Yes
Addition: No
Conversion: No

16 Floor 1 - Screened Porch



Max Dimensions: 11'5" x 9'7"
Calculated Area: 109 sq. ft
Included: No

Heated: No
Finished: Yes
Enclosed: No
Contiguous: Yes
Permitted: Yes
Wet space: No
Addition: No
Conversion: No

17 Floor 1 - Sunroom



Max Dimensions: 17'4" x 10'5"
Calculated Area: 181 sq. ft
Included: Yes

Heated: Yes
Finished: Yes
Enclosed: Yes
Contiguous: Yes
Permitted: Yes
Wet space: No
Addition: No
Conversion: No

1351 Aarons Run Cir, Salem, Roanoke County, Virginia, United States, 24153

18 Floor 1 - Primary Bedroom



Max Dimensions: 15'0" x 12'6"
Calculated Area: 188 sq. ft
Included: Yes

Heated: Yes
Finished: Yes
Enclosed: Yes
Contiguous: Yes
Permitted: Yes
Wet space: No
Addition: No
Conversion: No

19 Floor 1 - Living Room



Max Dimensions: 17'4" x 14'4"
Calculated Area: 248 sq. ft
Included: Yes

Heated: Yes
Finished: Yes
Enclosed: Yes
Contiguous: Yes
Permitted: Yes
Wet space: No
Addition: No
Conversion: No

20 Floor 1 - W.I.C.



Max Dimensions: 6'2" x 5'7"
Calculated Area: 30 sq. ft
Included: Yes

Heated: Yes
Finished: Yes
Enclosed: Yes
Contiguous: Yes
Permitted: Yes
Wet space: No
Addition: No
Conversion: No